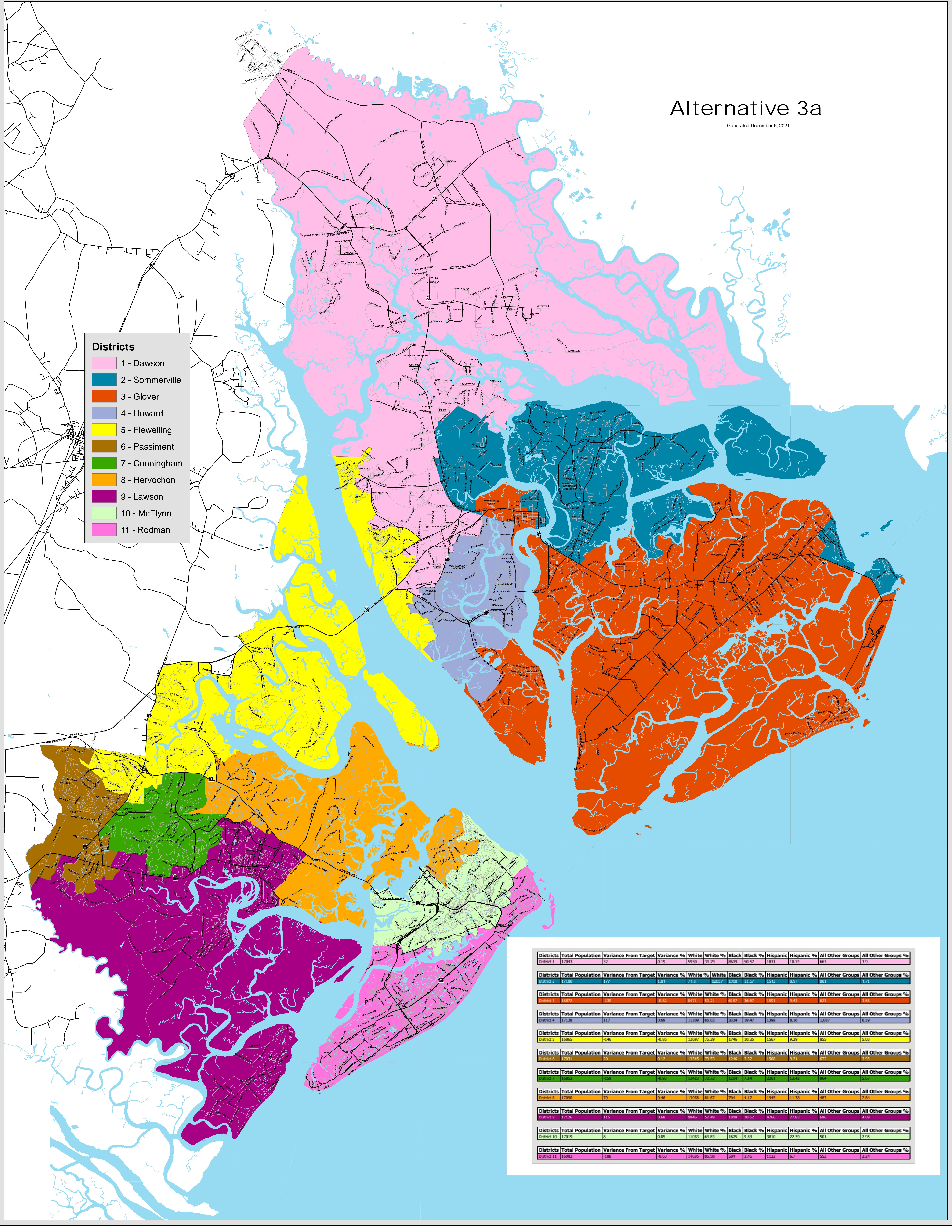


# Alternative 3a

Generated December 6, 2021

- Districts**
- 1 - Dawson
  - 2 - Sommerville
  - 3 - Glover
  - 4 - Howard
  - 5 - Flewelling
  - 6 - Passiment
  - 7 - Cunningham
  - 8 - Hervochon
  - 9 - Lawson
  - 10 - McElynn
  - 11 - Rodman



Districts	Total Population	Variance From Target	Variance %	White	White %	Black	Black %	Hispanic	Hispanic %	All Other Groups	All Other Groups %
District 1	17043	52	0.31	5938	34.79	8619	50.57	1831	10.74	663	3.9
District 2	17188	177	1.04	74.8	12857	1988	11.57	1542	8.97	801	4.71
District 3	16872	-139	-0.82	8471	50.21	6187	36.67	1591	9.43	623	3.68
District 4	17128	117	0.69	11309	66.03	3334	19.47	1398	8.16	1,087	6.39
District 5	16865	-146	-0.86	12697	75.29	1746	10.35	1567	9.29	855	5.07
District 6	17031	20	0.12	13545	79.53	1246	7.32	1568	9.21	672	3.95
District 7	16852	-150	-0.93	12423	73.72	1204	7.14	2261	13.42	964	5.67
District 8	17090	79	0.46	13958	81.67	704	4.12	1945	11.38	483	2.84
District 9	17126	115	0.66	9946	57.49	1818	10.62	4766	27.83	686	4.01
District 10	17019	8	0.05	11033	64.83	1675	9.84	3810	22.39	501	2.95
District 11	16903	-108	-0.63	14635	86.58	594	3.46	1132	6.7	552	3.24