



**Beaufort County Public Works**  
**Stormwater Infrastructure**  
*Project Summary*

**Project Summary:** Sea Island Parkway

**Activity:** Routine/Preventive Maintenance

**Duration:** 03/26/19-05/23/19

**Narrative Description of Project:**

Project improved 1,458 L.F. of drainage system. Grubbed and cleared 120 L.F. of lateral ditch and 1,338 L.F. of workshelf. Cleaned out 120 L.F. of lateral ditch and 1,338 L.F. of channel. Installed (2) access pipes. Handseeded for erosion control.

2019-559 / Sea Island Parkway	Labor Hours	Labor Cost	Equipment Cost	Material Cost	Contractor Cost	Indirect Labor	Total Cost
APINS / Access pipe - installed	20.0	\$652.20	\$75.26	\$171.00	\$0.00	\$134.40	\$1,032.86
AUDIT / Audit Project	2.0	\$43.58	\$0.00	\$0.00	\$0.00	\$0.00	\$43.58
CCO / Channel - cleaned out	54.0	\$1,629.74	\$322.01	\$108.17	\$0.00	\$295.68	\$2,355.60
DEBREM / Debris Removal - Jobsite	30.0	\$862.80	\$150.34	\$32.67	\$0.00	\$266.70	\$1,312.51
HAND / HANDSEEDED	15.0	\$431.40	\$18.00	\$217.97	\$0.00	\$133.35	\$800.72
HAUL / Hauling	40.5	\$898.97	\$446.64	\$381.45	\$0.00	\$300.85	\$2,027.91
RMTRW / Remove trees - Workshelf	10.0	\$210.60	\$246.68	\$95.18	\$0.00	\$132.30	\$684.76
WSDR / Workshelf - Dressed	104.0	\$2,888.35	\$962.89	\$346.92	\$0.00	\$892.71	\$5,090.87
WSGRB / Workshelf - Grubbed	288.0	\$8,267.18	\$2,233.02	\$393.78	\$0.00	\$2,428.02	\$13,322.00
2019-559 / Sea Island Parkway Sub Total	563.5	\$15,884.82	\$4,454.84	\$1,747.14	\$0.00	\$4,584.01	\$26,670.81
<b>Grand Total</b>	<b>563.5</b>	<b>\$15,884.82</b>	<b>\$4,454.84</b>	<b>\$1,747.14</b>	<b>\$0.00</b>	<b>\$4,584.01</b>	<b>\$26,670.81</b>

**Before**

**During**

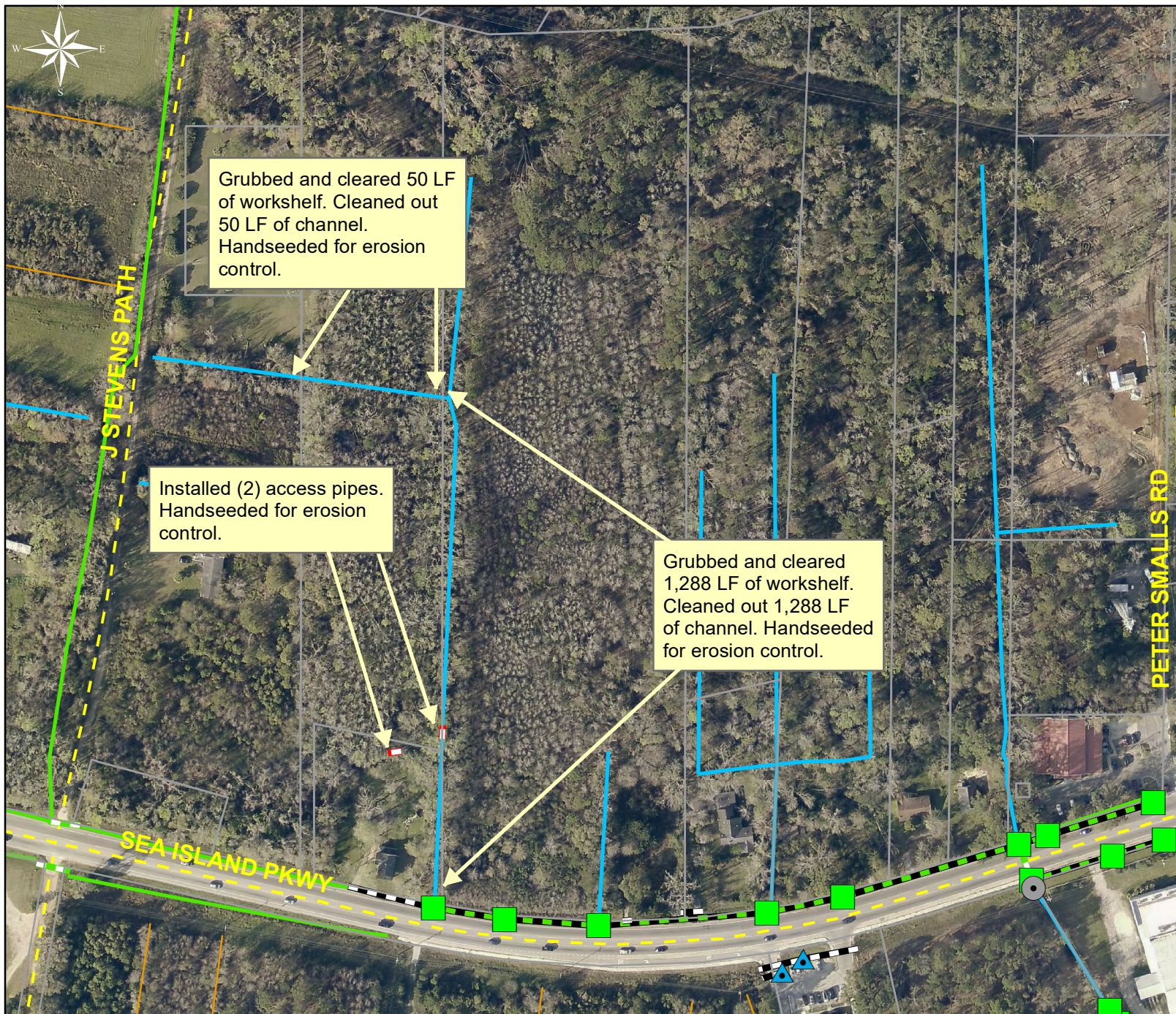
**After**

(No Picture Available)

(No Picture Available)







Project: Sea  
Island Parkway  
Map #1

Activity: Routine/  
Preventive  
Maintenance

Project #:  
2019-559

Township/SW Dist:  
St Helena Island/8

Completed:  
May 2019

### Legend

#### Drainage Type

- Access Pipe
- Bleeder Pipe
- Channel Pipe
- Channel
- Stream
- Crossline Pipe
- Driveway Pipe
- Lateral
- Lateral Pipe
- River
- Road Pipe
- Roadside
- Roadside Pipe

0 50 100 200 300 400  
Feet

1 inch = 210 feet

Prepared By: BC Stormwater Management Utility

Date Print: 06/20/19

File: C:\project summaries map\ Sea Island Parkway Map #1\_2019-559



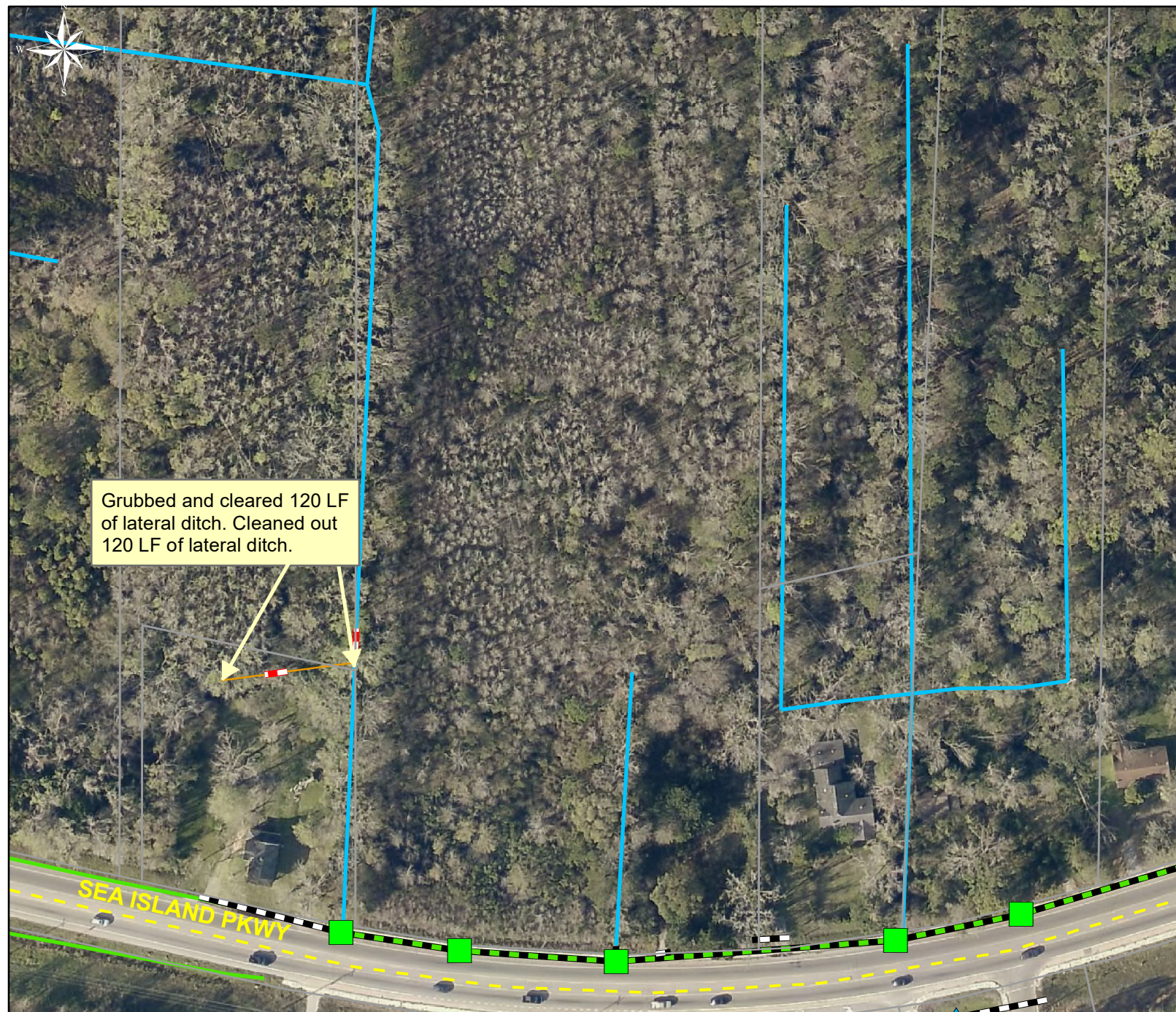
Project: Sea  
Island Parkway  
Map #2

Activity: Routine/  
Preventive  
Maintenance

Project #:  
2019-559














Township/SW Dist:  
St Helena Island/8

Completed:  
May 2019



**Legend**

**Drainage Type**

-  Access Pipe
-  Bleeder Pipe
-  Channel Pipe
-  Channel
-  Stream
-  Crossline Pipe
-  Driveway Pipe
-  Lateral
-  Lateral Pipe
-  River
-  Road Pipe
-  Roadside
-  Roadside Pipe

0 30 60 120 180 240  
Feet

1 inch = 130 feet

Prepared By: BC Stormwater Management Utility  
Date Print: 06/20/19  
File: C:\project summaries map\ Sea Island Parkway Map #2\_2019-559