



**Beaufort County Public Works**  
**Stormwater Infrastructure**  
*Project Summary*

**Project Summary:** Huspah Drive and Fire Station Lane Channel

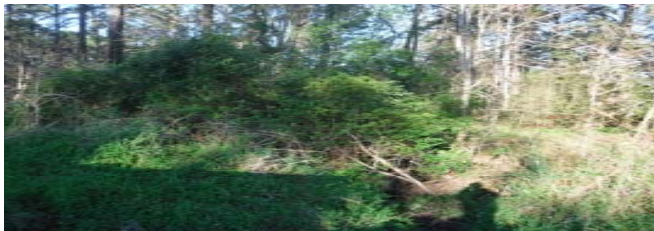
**Activity:** Routine/Preventive Maintenance

**Duration:** 03/21/18-08/01/18

**Narrative Description of Project:**

Project improved 2,960 L.F. of drainage system. Grubbed and cleared 1,085 L.F. of workshelf. Bush hogged 1,330 L.F. of workshelf. Reconstructed 75 L.F. of workshelf. Cleaned out 1,630 L.F of channel. Installed (1) access pipe and (1) access gate. Jetted (1) crossline pipe. Hydroseeded for erosion control.

<b>2018-005 / Huspah Drive/ Fire Station Lane</b>	<b>Labor Hours</b>	<b>Labor Cost</b>	<b>Equipment Cost</b>	<b>Material Cost</b>	<b>Contractor Cost</b>	<b>Indirect Labor</b>	<b>Total Cost</b>
AGI / Access Gate - Installed	9.0	\$200.55	\$11.52	\$52.67	\$0.00	\$129.30	\$394.04
APINS / Access pipe - installed	40.0	\$806.40	\$203.08	\$385.14	\$0.00	\$376.50	\$1,771.12
AUDIT / Audit Project	2.0	\$43.58	\$0.00	\$0.00	\$0.00	\$0.00	\$43.58
CCO / Channel - cleaned out	167.0	\$3,750.83	\$942.29	\$277.41	\$0.00	\$2,170.87	\$7,141.40
CLPJT / Crossline Pipe - Jetted	4.0	\$89.12	\$17.36	\$23.40	\$0.00	\$57.36	\$187.24
DEBREM / Debris Removal - Jobsite	80.0	\$1,842.60	\$1,201.43	\$131.52	\$0.00	\$829.50	\$4,005.05
HAUL / Hauling	214.0	\$4,872.79	\$1,926.39	\$6,443.37	\$0.00	\$2,110.91	\$15,353.46
HYDR / Hydroseeding	10.0	\$204.60	\$42.88	\$1,059.31	\$0.00	\$127.20	\$1,433.99
ONJV / Onsite Job Visit	3.0	\$161.46	\$10.80	\$6.24	\$0.00	\$56.16	\$234.66
PP / Project Preparation	30.0	\$645.30	\$38.40	\$18.17	\$0.00	\$266.70	\$968.57
RMTRW / Remove trees - Workshelf	60.0	\$1,443.20	\$549.63	\$128.62	\$0.00	\$821.80	\$2,943.25
STAGING / Staging Materials/Equipment	40.0	\$859.60	\$38.40	\$31.20	\$0.00	\$521.10	\$1,450.30
WSBH / Workshelf - Bush Hogged	44.0	\$1,022.71	\$541.98	\$105.32	\$0.00	\$570.68	\$2,240.69
WSDR / Workshelf - Dressed	15.0	\$334.15	\$99.20	\$22.90	\$0.00	\$214.65	\$670.90
WSGRB / Workshelf - Grubbed	60.0	\$1,398.30	\$565.10	\$96.77	\$0.00	\$687.40	\$2,747.57
WSL / Workshelf - Level	40.0	\$932.20	\$162.00	\$79.71	\$0.00	\$543.20	\$1,717.11
WSREP / Workshelf - Repair	30.0	\$721.60	\$282.55	\$59.31	\$0.00	\$410.90	\$1,474.36
2018-005 / Huspah Drive/ Fire Station Lane Sub Total	848.0	\$19,328.99	\$6,633.01	\$8,921.06	\$0.00	\$9,894.23	\$44,777.29
<b>Grand Total</b>	<b>Before</b>	<b>848.0</b>	<b>\$19,328.99</b>	<b>\$6,633.01</b>	<b>\$8,921.06</b>	<b>\$0.00</b>	<b>\$9,894.23</b>
							<b>\$44,777.29</b>



Project: Huspah Drive and Fire Station Lane Channel Map #1

Activity: Routine/ Preventive Maintenance

Project #: 2018-005

Township/SW Dist: Sheldon/5

Completed: August 2018



**Legend**

**Drainage Type**

- Access Pipe
- Bleeder Pipe
- Channel Pipe
- Channel
- Stream
- Crossline Pipe
- Driveway Pipe
- Lateral
- Lateral Pipe
- River
- Road Pipe
- Roadside
- Roadside Pipe

0 60 120 240 360 480 Feet

1 inch = 250 feet

Prepared By: BC Stormwater Management Utility

Date Print: 02/21/19

File: C:\es project summaries map/Huspah Drive/ Fire Station Lane Channel Map #1\_2018-005

Project: Huspah  
Drive and  
Fire Station  
Lane Channel  
Map #2

Activity: Routine/  
Preventive  
Maintenance

Project #:  
2018-005

Township/SW Dist:  
Sheldon/5

Completed:  
August 2018



**Legend**

**Drainage Type**

- Access Pipe
- Bleeder Pipe
- Channel Pipe
- Channel
- Stream
- Crossline Pipe
- Driveway Pipe
- Lateral
- Lateral Pipe
- River
- Road Pipe
- Roadside
- Roadside Pipe

0 80 160 320 480 640  
Feet

1 inch = 330 feet

Prepared By: BC Stormwater Management Utility

Date Print: 02/21/19

File: C:\es project summaries map/Huspah Drive/ Fire Station Lane Channel Map #2\_2018-005