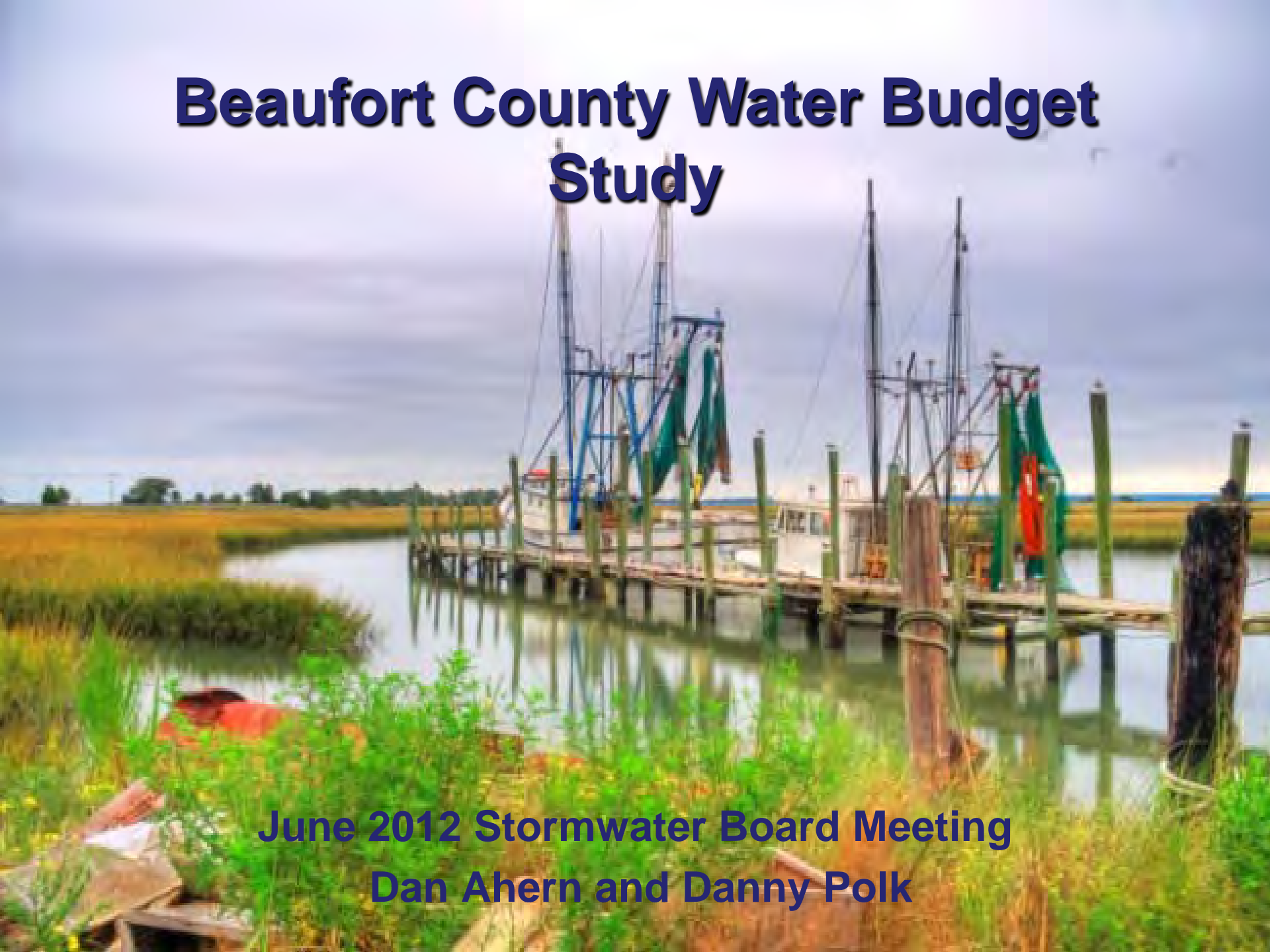


Beaufort County Water Budget Study

A photograph of a dock with several fishing boats in a marshy area under a cloudy sky. The boats are white with blue and green accents. The dock is made of wooden pilings. The water is calm, reflecting the sky and the boats. The foreground is filled with green grass and some brown debris.

**June 2012 Stormwater Board Meeting
Dan Ahern and Danny Polk**



Outline



- **Purpose for Study**
- **Activities Leading Up to Study**
- **Description of Study**
- **Future Schedule**

Purpose of Study

- **Purpose has evolved**
 - Initially Hydraulic Study of May River
 - Evolved into watershed comparison
- **Now a comparison of a developed and undeveloped watersheds**
 - Develop water budget for the Okatie River and Palmetto Bluff areas
 - Compare how differ for various components of the water budget

Activities Leading up to Study



Activities Leading up to Study

- **Initiation was result of 2009 Meeting**
 - May River TAC recommendation
 - SC Water Plan (2004)
- **Initial Efforts**
 - May 2009 meeting with SCDNR
 - Decided to Focus on May River
 - July 2009 May River Proposal
 - May River TAC and other Reviews
 - Feb 2010 Natural Resources approved

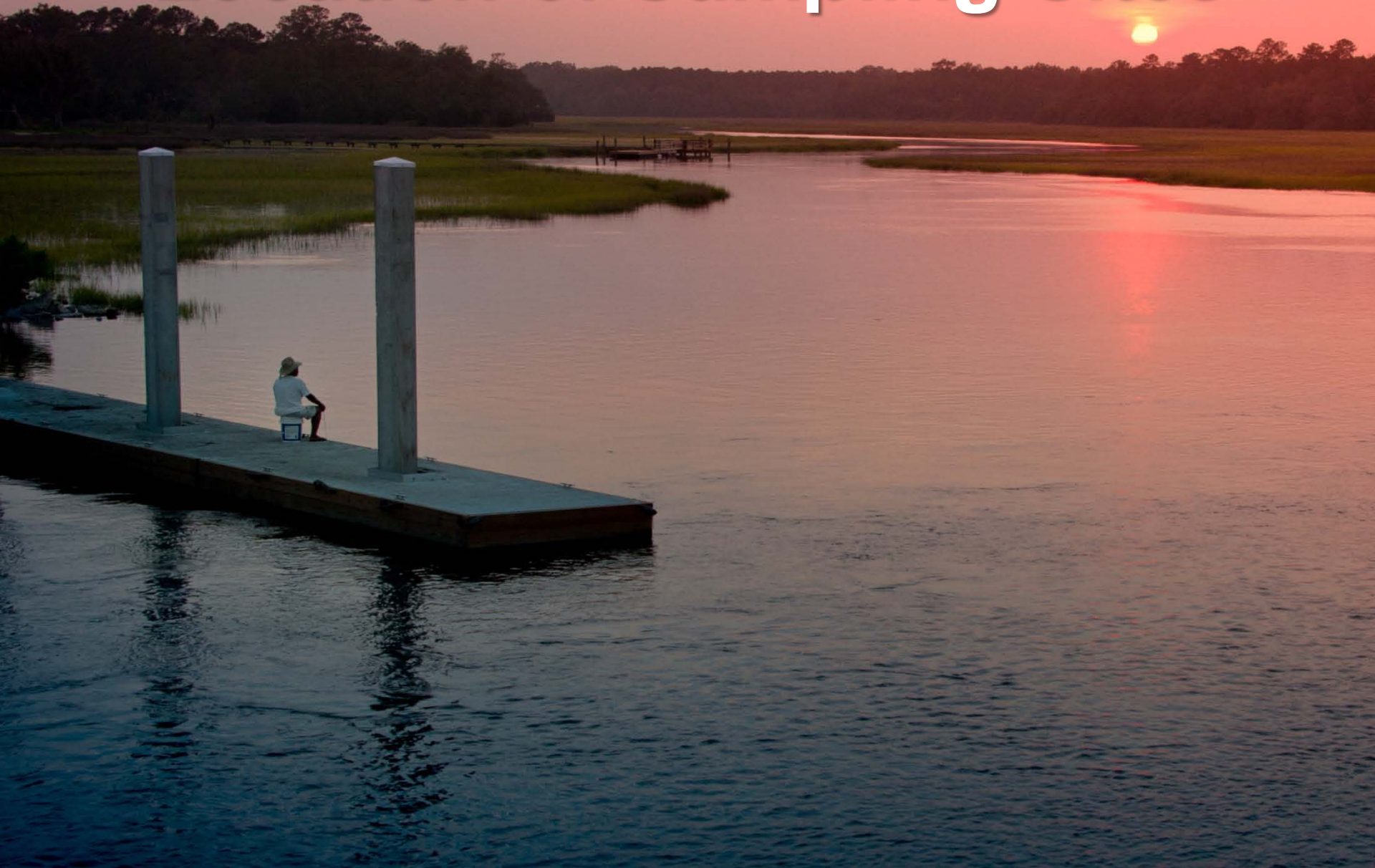
Activities Leading up to Study

- SC DNR Budget Cuts in 2010
- July 2010 Current Water Budget Proposal – Watershed comparison
- July 2010 – Natural Resources approves revised proposal \$50k vs \$115k
- Jan 2011 DNR says cannot do study
- Mar 2011 –Clemson to support study
- May 2011 – Kickoff meeting on Study

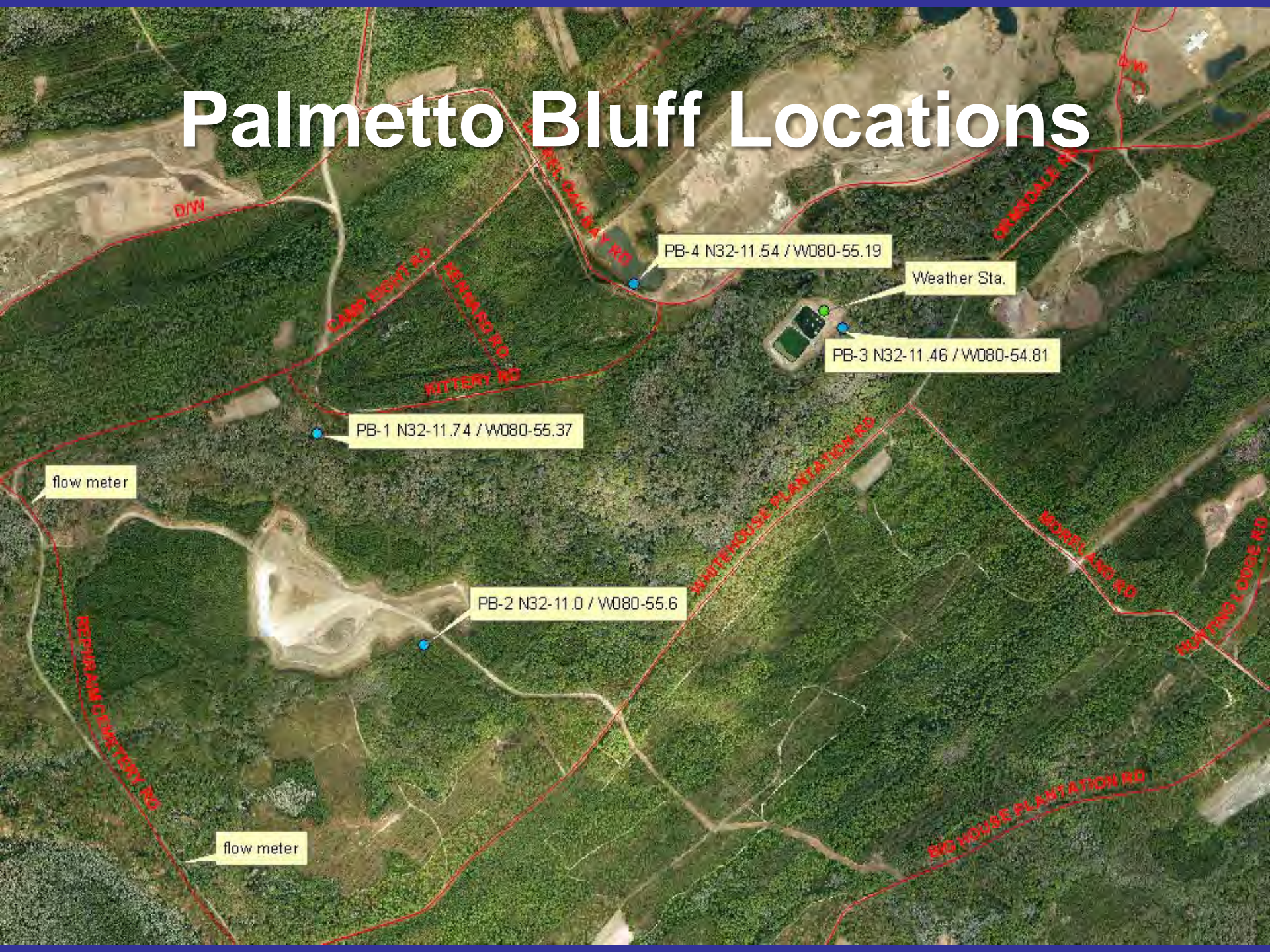
Activities leading up to Study

- July 2011 – Monitoring equipment plan
 - Late 2011 – Equipment Procurement
 - Nov 2011 – Support agreement with GEL
 - Jan 2012 – Final authorization from Palmetto Bluff
 - Early 2012 – Installation of weirs and wells
 - May 2012 – Launching of USS Badr in Sun City
- 

Location of Sampling Sites



Palmetto Bluff Locations



Sun City Locations



SCW-5 N32-17.38' / W080-56.55'

SCW-4 N32-17.22' / W080-56.74'

SCW-1 N32-16.83' / W080-56.87'

SCW-3 N32-16.82' / W080-57.35'

SCW-2 N32-16.61' / W080-56.87'

Evap. Pan

weather sta.

flow meter

Well Points installed



Weather Station



Sun City weir and flow meter location



USS Bud Badr





Questions

