

Project Summaries

April 2012



Beaufort County Public Works *Stormwater Infrastructure* *Project Summary*

Project: Major Road

Completed: Aug-11

Project #: 2012-500

Project Total: \$15,766.60

Narrative Description of Project:

Project improved 2,631 L.F. of drainage system. Cleaned out 1,195 L.F. of roadside ditch and 1,436 L.F. of outfall ditch. Replaced (1) driveway pipe to correct elevation. Jetted (1) crossline pipe and (6) driveway pipes. Installed rip rap and hydroseeded for erosion control.

Site Photographs

Before



During



After



Project: Major Road Map 1

Activity: Drainage Maintenance

Project #: 2012-500

Township: St. Helena Island

Completed: August 2011

Legend

Drainage Type

-  River
-  Stream
-  Outfall
-  Lateral
-  Lateral Pipe
-  Roadside
-  Roadside Pipe
-  Crossline
-  DW
-  Access
-  Piped
-  Bleeder
-  Parcels
-  Flaggate

Cleaned out 560 LF of roadside ditch. Hydroseeded for erosion control.

Replaced (1) driveway pipe to correct elevation. Installed rip rap for erosion control.

Cleaned out 916 LF of outfall ditch. Hydroseeded for erosion control.

Cleaned out 635 LF of roadside ditch. Hydroseeded for erosion control.

Cleaned out 520 LF of outfall ditch. Hydroseeded for erosion control.



1 inch = 265 feet

Project: Major Road Map 2

Activity: Vacuum Truck

Project #: 2012-500

Township: St. Helena Island

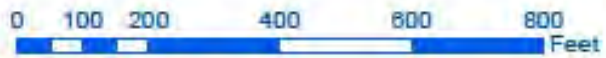
Completed: August 2011

Jetted (6) driveway pipes and (1) crossline pipe.

Legend

Drainage Type

- River
- Stream
- Outfall
- Lateral
- Lateral Pipe
- Roadside
- Roadside Pipe
- Crossline
- DW
- Access
- Piped
- Bleeder
- Parcels
- Flapgate



1 inch = 265 feet



Beaufort County Public Works *Stormwater Infrastructure* Project Summary

Project: Chesterfield Lake Drive

Completed: Jan-12

Project #: 2012-002

Project Total: \$18,327.36

Narrative Description of Project:

Project improved 745 L.F. of drainage system. Grubbed, cleared and reconstructed 295 L.F. of outfall ditch. Cleaned out 450 L.F. outfall ditch. Installed (1) access pipe and extended (1) crossline pipe. Cleaned out (1) catch basin. Jetted (1) crossline pipe and (1) driveway pipe. Installed straw mat, rip rap and hydroseeded for erosion control.

Site Photographs

Before



During



After



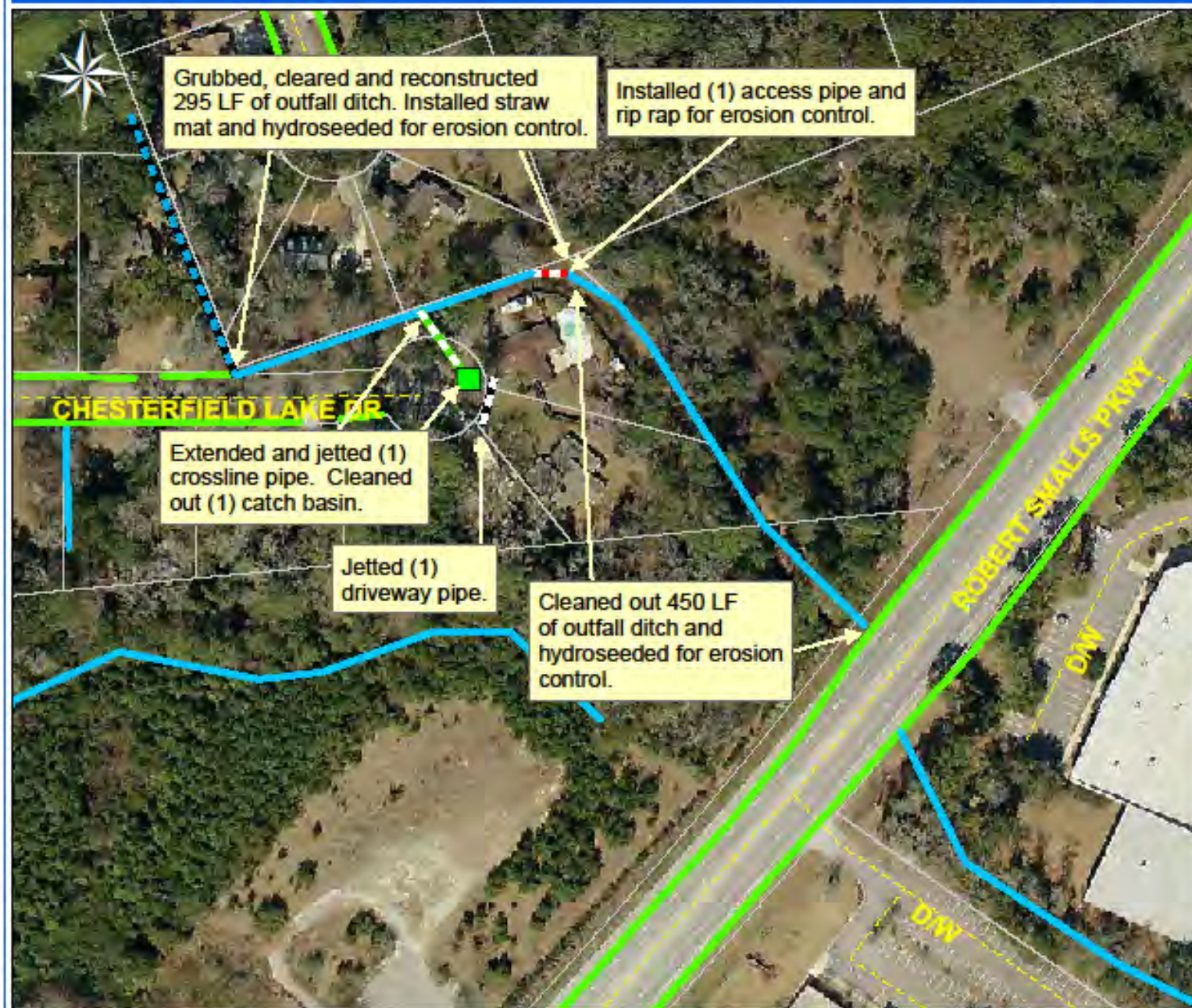
Project: Chesterfield Lake Drive

Activity: Drainage Improvement

Project #: 2012-002







Township: Port Royal Island

Completed: January 2012



Legend

Drainage Type

-  River
-  Stream
-  Outfall
-  Lateral
-  Lateral Pipe
-  Roadside
-  Roadside Pipe
-  Crossline
-  D/W
-  Access
-  Piped
-  Bleeder
-  Parcels
-  Flapgate
-  Catch Basin



1 inch = 128 feet



Beaufort County Public Works *Stormwater Infrastructure* *Project Summary*

Project: Laurel Street East and
Pine Grove Outfall

Completed: Mar-12

Project #: 2012-554

Project Total: \$19,661.18

Narrative Description of Project:

Project improved 2,662 L.F. of drainage system. Cleaned out 900 L.F. of outfall ditch and 1,556 L.F. of roadside ditch. Replaced 8 L.F. of crossline pipe. Repaired washouts. Jetted (1) access pipe, (1) crossline pipe and 198 L.F. of roadside pipe. Handseeded for erosion control.

Site Photographs

Before



During



After



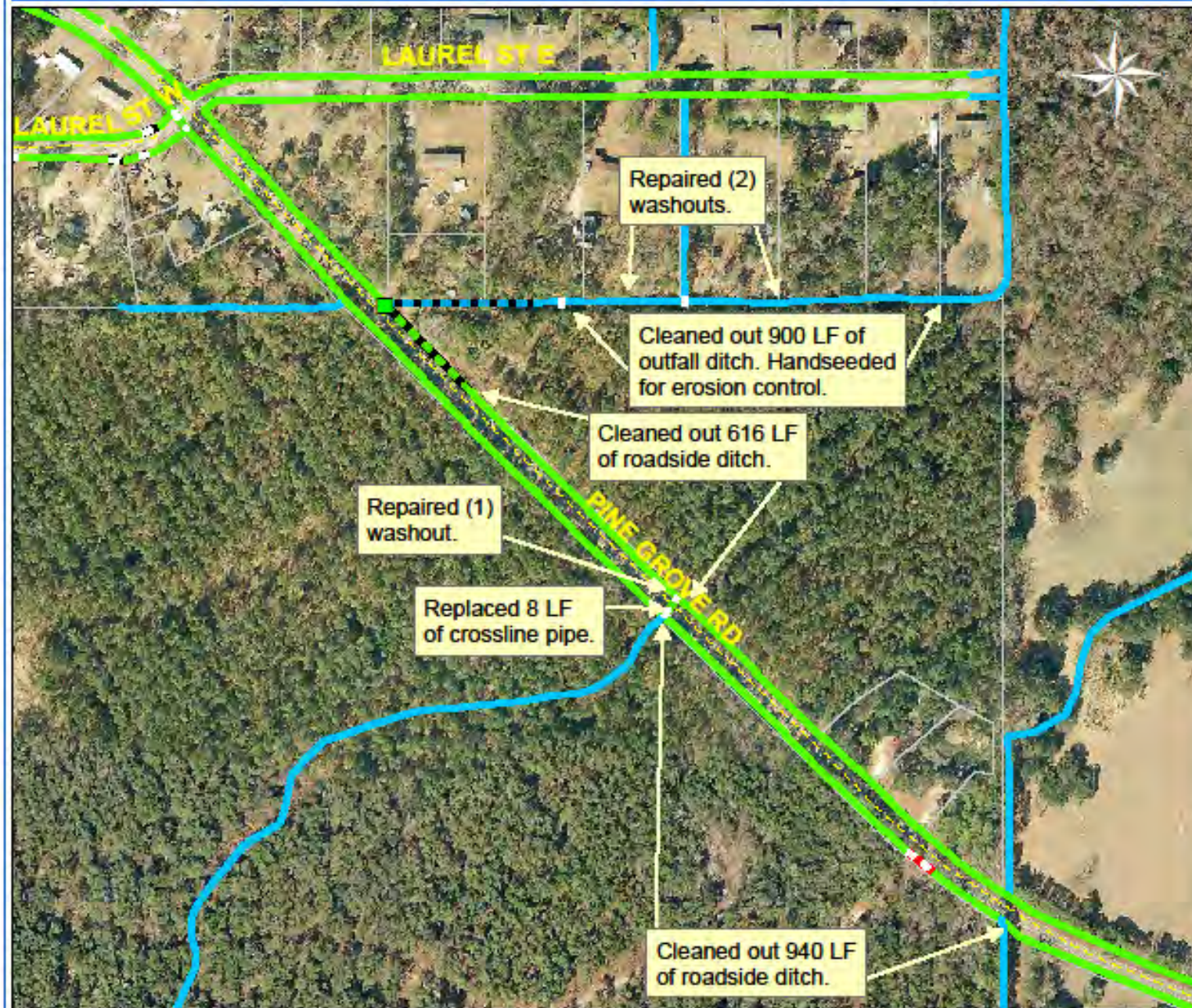
Project: Laurel Street
East outfall and Pine
Grove Road Map 1

Activity: Drainage
Maintenance

Project #:
2012-554

Township: Port
Royal Island

Completed:
February 2012



0 112.5 225 450 675 900 Feet

1 inch = 279 feet

Prepared By: BC Stormwater Management Utility

Date Print: 3/22/12

File: C:/sethdata/projects/projectmaps/Laurel st E&Pine Grove 12-554Map1

Project: Laurel Street
East outfall and Pine
Grove Road Map 2

Activity: Vacuum
Truck

Project #:
2012-554

Township: Port
Royal Island

Completed:
February 2012

Legend	
Drainage Type	
	River
	Stream
	Outfall
	Lateral
	Lateral Pipe
	Roadside
	Roadside Pipe
	Crossline
	D/W
	Access
	Piped
	Bleeder
	Parcels



1 inch = 279 feet

Small Drainage Projects

- Sheldon Bush Hog Work

Aug. 11 – Sheldon

- Bush hogged 107,976 ft. of outfall ditch & 11,149 ft. of roadside ditch
- Cost - \$45,572 or \$.38 per foot

Small Drainage Projects

- Big Estate Circle & Swallowtail Lane
Aug. 11 – Sheldon
 - Removed several fallen trees from the drainage system.

Small Drainage Projects

- Mint Farm Pond & Outfall

Aug. 11 – Port Royal Island

- Bush hogged 2,095 ft. of outfall ditch, replaced a catch basin lid that had been stolen & installed (1) access pipe for pond maintenance.

Small Drainage Projects

- Ethel Grant Lane

Aug. 11 – Lady's Island

– Cleaned out (2) catch basins, jetted out the crossline pipe & 95 ft. of outfall pipe.

Small Drainage Projects

- Colonial Heights
Aug. 11 – Port Royal Island
– Repaired a washout.

Small Drainage Projects

- Simmons Road Outfall
 - Sept. 11 – St. Helena Island
 - Cleaned out 370 ft. of outfall ditch.

Small Drainage Projects

- Old Jericho Road
 - Sept. 11 – Port Royal Island
 - Cleaned out trash & debris from 100 ft. of roadside ditch.

Small Drainage Projects

- Vine Street
Sept. 11 – Bluffton
 - Cleaned out 1,560 ft. of roadside ditch, used the vacuum truck to clean out (6) catch basins, (4) crossline pipes, (13) driveway pipes & 637 ft. of roadside pipe.

Small Drainage Projects

- Shell Point Circle
 - Oct. 11 – Port Royal Island
 - Removed blockage & jetted out (1) crossline pipe.

Small Drainage Projects

- Sea Island Parkway Outfall
Feb. 12 – St. Helena Island
 - Cleaned out 320 ft. of outfall ditch, replaced 20 ft. of outfall pipe & replaced a flapgate.

Small Drainage Projects

- Hodge Drive Outfall
Feb. 12 – Port Royal Island
 - Cleaned out 960 ft. of outfall ditch & installed (1) access pipe.

Small Drainage Projects

- Seigler Road Outfall
Feb. 12 – Sheldon
 - Removed debris & rip rap from the flow line and adjusted the flapgate.

Small Drainage Projects

- Brilliant Lane

Feb. 12 – Port Royal Island

- Cleaned out 1,328 ft. of roadside & 676 ft. of outfall ditch. Jetted out (9) driveway pipes, (1) crossline pipe & repaired a driveway.

Small Drainage Projects

- Sheldon Bush Hog Work
Feb. 12 – Sheldon
 - Bush hogged 44,209 ft. of outfall ditch & 8,263 ft. of roadside ditch.