



# Shellfish Classification Update

Stormwater Board Meeting

November 2, 2011

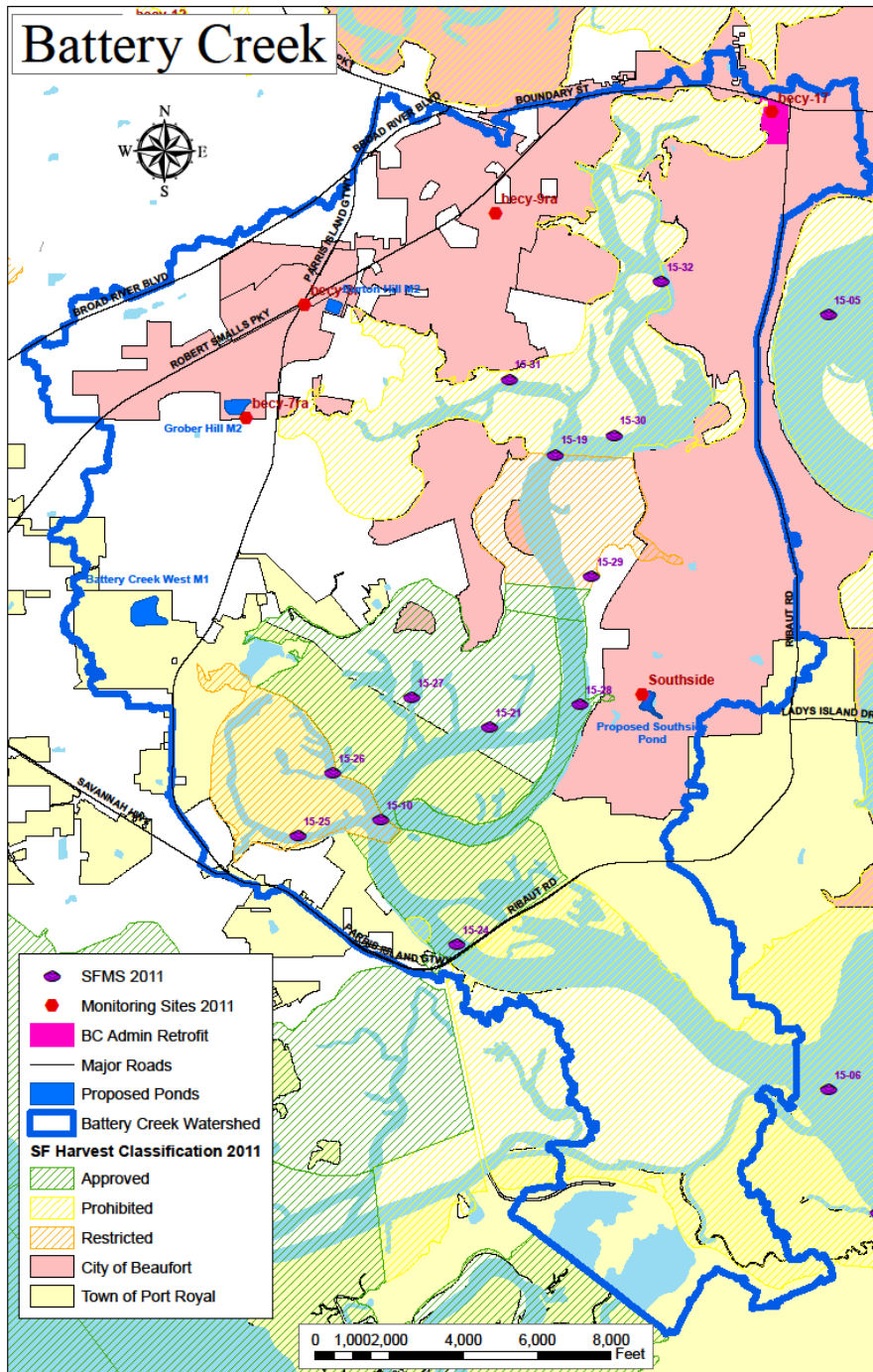
# Outline

- **New Simplified Method of presenting SF Monitoring data**
- **Battery Creek data**
- **Other Headwater data**
- **Beaufort River Dye Study**

# Shellfish Data Simplified Presentation

- **Shellfish Standards are:**
  - 14 MPM FC/100 ml geomean average
  - No more than 10% values over 43
- **Charts list number of Excedences in year:**
  - Over 14
  - Over 43

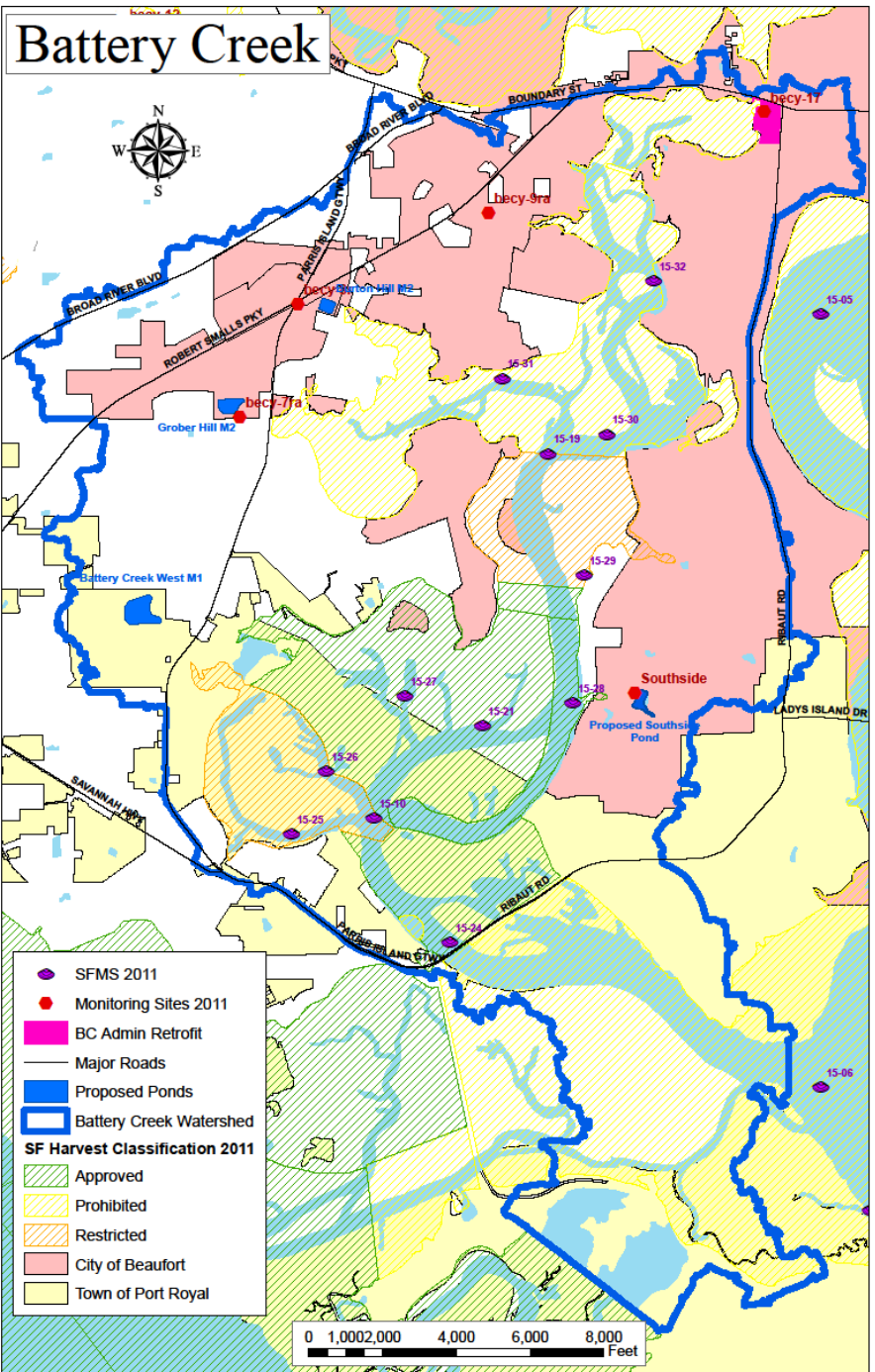
# Battery Creek



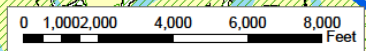
# BC North Fork Stations

Year/Rain	15-32	15-30	15-19
2010/36*	8/4	4/3	7/0
2009/52	7/1	5/2	3/2
2008/49	7/5	5/2	7/2
2007/38	5/3	0/0	2/0

# Battery Creek



- SFMS 2011
- Monitoring Sites 2011
- BC Admin Retrofit
- Major Roads
- Proposed Ponds
- Battery Creek Watershed
- SF Harvest Classification 2011**
- Approved
- Prohibited
- Restricted
- City of Beaufort
- Town of Port Royal



# BC West Fork Stations

Year/Rain	15-31	15-19	
2010/36*	9/3	7/0	
2009/52	6/1	3/2	
2008/49	7/2	7/2	
2007/38	6/1	2/0	

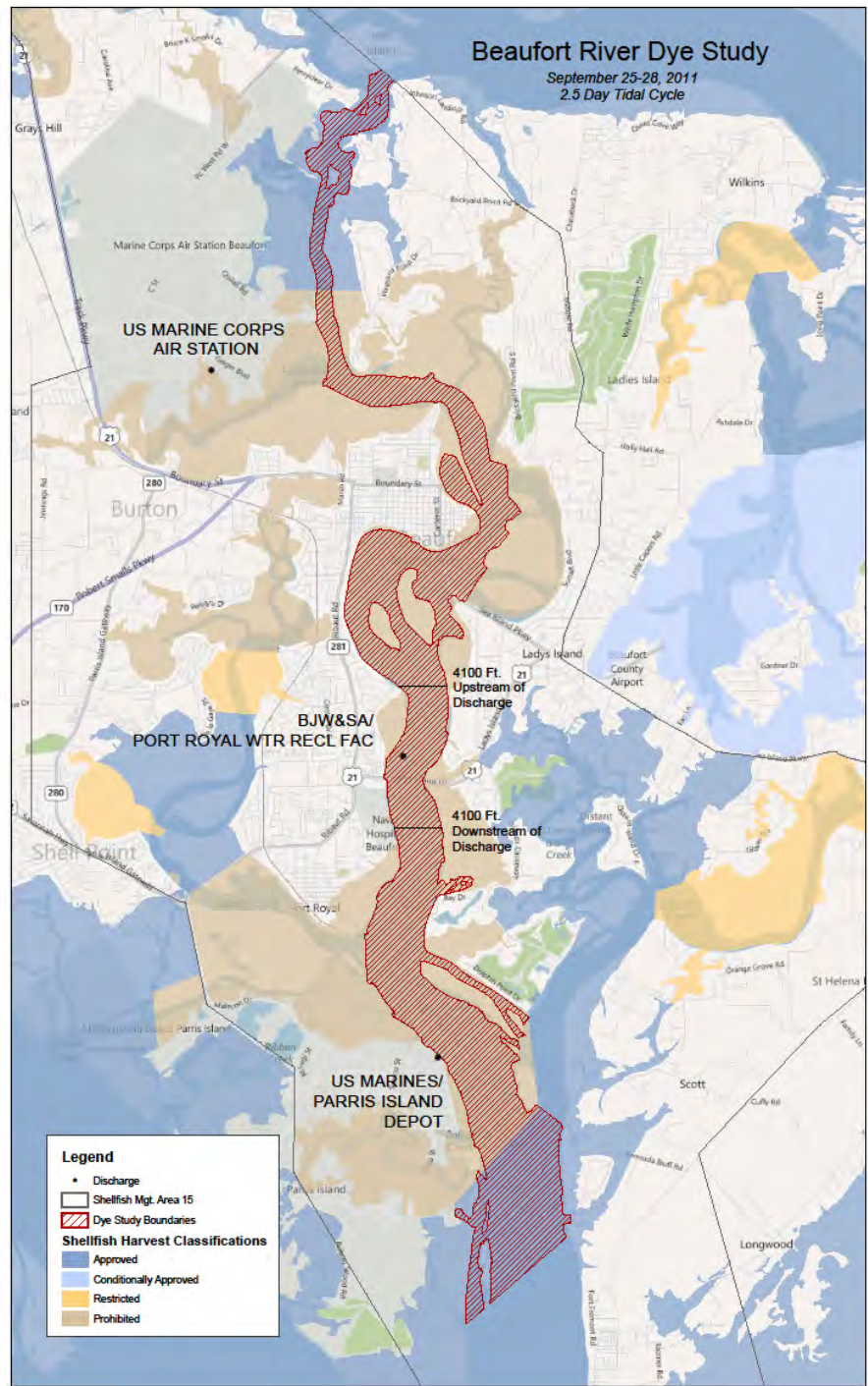
# Headwater Stations

Year/Rain	15-32	18-08	19-19	17-01
2010/36*	8/4	10/4	13/8**	3/0
2009/52	7/1	9/4	15/5**	1/0
2008/49	7/5	8/6	8/2	2/1
2007/38	5/3	8/6	5/2	0/0



# Beaufort River Dye Study

September 25-28, 2011  
2.5 Day Tidal Cycle



**Legend**

- Discharge
- Shellfish Mgt. Area 15
- ▨ Dye Study Boundaries

**Shellfish Harvest Classifications**

- Approved
- Conditionally Approved
- Restricted
- Prohibited



# Questions