

Project Summaries

July 2011

FY 2011 Construction Project Status

- Potential Construction 14
- Awaiting Easement 27
- Engineering Support 3
- Awaiting Construction Start 7
- Under Construction 6
- Compiling 8
- Completed 21

FY 2011 Maintenance Projects

- Awaiting Maintenance 34
- In Progress 28
- Compiling 42
- Completed 76



Beaufort County Public Works *Stormwater Infrastructure* Project Summary

Project: Twickenham Plantation Rd
and Swallowtail Lane

Completed: Sep-09

Project #: 2007-98

Project Total: \$291,526.52

Narrative Description of Project:

Project improved 9,101 L.F. of drainage system. Shinn cut 7,866 L.F. of outfall ditch, workshelf and 727 L.F. of roadside ditch. Grubbed 400 L.F. of workshelf. Constructed 7,066 L.F. of outfall ditch and workshelf. Cleaned out 1,053 L.F. of outfall ditch and 835 L.F. of roadside ditch. Installed (8) access pipes, (7) bleeder pipes and (5) crossline pipes. Upsized (1) crossline pipe to correct elevation. Extended (1) access pipe. Jetted (1) crossline pipe. Installed rip rap, handseeded and hydroseeded for erosion control.

Site Photographs

Before



During



After



Project: Twickenham
Plantation Road
Map 1

Activity: Drainage
Maintenance

Project #:
2007-98

Township:
Sheldon

Completed:
March 2010

Legend

Drainage Type

-  River
-  Stream
-  Outfall
-  Lateral
-  Lateral Pipe
-  Roadside
-  Roadside Pipe
-  Crossline
-  D/W
-  Access
-  Piped
-  Bleeder
-  Parcels

Installed rip rap on
pipe installations.

Installed twin
crossline pipes.

Installed (1) access pipe
and (1) crossline pipe.

Installed (2) access pipes
and (4) bleeder pipes.

Installed (3) acces pipes, (1)
crossline pipe and (3) bleeder
pipes.

Jetted (1)
crossline pipe.

Installed and extended (1)
access pipe. Installed (1)
crossline pipe.

0 285 570 1,140 1,710 2,280
Feet

1 inch = 715 feet

Prepared By: BC Stormwater Management Utility

Date Print: 8/29/11

File: C:/sethdata/projects/projectmaps/Twickenham Map 1

Project: Twickenham
Plantation Road
Map 2

Activity: Drainage
Maintenance

Project #:
2007-98

Township:
Sheldon

Completed:
March 2010

Shinn cut and constructed 4,319 LF
of outfall ditch and workshelf.
Handseeded and hydroseeded for
erosion control.

Shinn cut and constructed 2,747 LF
of outfall ditch and workshelf.
Handseeded and hydroseeded for
erosion control.

Legend

Drainage Type

-  River
-  Stream
-  Outfall
-  Lateral
-  Lateral Pipe
-  Roadside
-  Roadside Pipe
-  Crossline
-  D/W
-  Access
-  Piped
-  Bleeder
-  Parcels

0 200 400 800 1,200 1,600
Feet

1 inch = 510 feet

Prepared By: BC Stormwater Management Utility

Date Print: 8/29/11

File: C:/sethdata/projects/projectmaps/Twickenham Map 2

Project:
Swallowtail Lane

Activity: Drainage
Maintenance

Project #:
2007-98

Township:
Sheldon

Completed:
March 2010

Legend

Drainage Type

-  River
-  Stream
-  Outfall
-  Lateral
-  Roadside
-  Roadside Pipe
-  Crossline
-  D/W
-  Access
-  Piped
-  Bleeder



0 45 90 180 270 360
Feet

1 inch = 192.15 feet

Prepared By: BC Stormwater Management Utility

Date Print: 8/29/11

File: C:\sethdata\project\projectmap\Swallowtail Ln 2007-98



Beaufort County Public Works *Stormwater Infrastructure* *Project Summary*

Project: Polite Drive

Completed: Jul-10

Project #: 2008-013

Project Total: \$22,694.21

Narrative Description of Project:

Project improved 460 L.F. of drainage system. Reconstructed 184 L.F. of roadside ditch. Cleaned out 276 L.F. of roadside ditch. Upsized to (2) crossline pipes. Repaired washout. Installed straw mat, rip rap and hydroseeded for erosion control.

Site Photographs

Before



During



After



Project: Polite Drive

Activity: Drainage Maintenance

Project #: 2008-013

Township: Port Royal Island

Completed: July 2010



Legend

Drainage Type

- River
- Stream
- Outfall
- Lateral
- Lateral Pipe
- Roadside
- Roadside Pipe
- Road Pipe
- Crossline
- D/W
- Access
- Piped
- Bleeder
- Parcels



1 inch = 92 feet

Prepared By: BC Stormwater Management Utility
Date Print: 5/18/11

File: C:/sethdata/projects/projectmaps/Polite Dr 2008-013



Beaufort County Public Works *Stormwater Infrastructure* Project Summary

Project: Colonial Heights - Phase 4

Completed: Mar-11

Project #: 2011-047C

Project Total: \$59,005.72

Narrative Description of Project:

Project improved 1,040 L.F. of drainage system. Installed 1,040 L.F. of outfall pipe. Repaired washout. Installed rip rap, sod and hydroseeded for erosion control.

Site Photographs

Before



During



After



Project: Colonial Heights Phase IV

Activity: Drainage Maintenance

Project #: 2011-047C

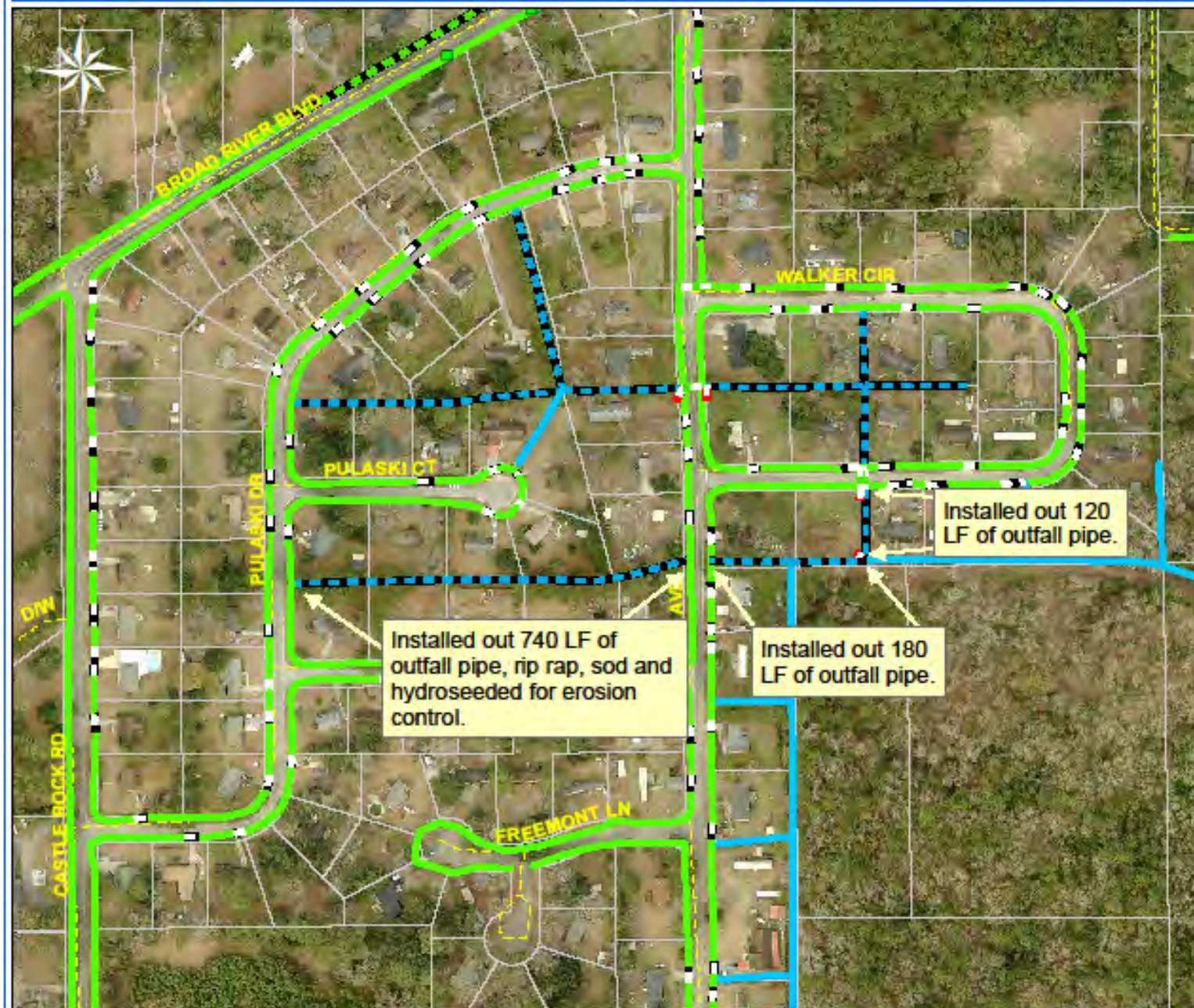
Township: Port Royal Island

Completed: March 2011

Legend

Drainage Type

-  River
-  Stream
-  Outfall
-  Lateral
-  Lateral Pipe
-  Roadside
-  Roadside Pipe
-  Crossline
-  D/W
-  Access
-  Piped
-  Bleeder
-  Parcels



Installed out 740 LF of outfall pipe, rip rap, sod and hydroseeded for erosion control.

Installed out 180 LF of outfall pipe.

Installed out 120 LF of outfall pipe.



1 inch = 247 feet

Prepared By: BC Stormwater Management Utility

Date Print: 3/16/11

File: C:/sethdata/projects/projectmaps/Colonial Heights PhIV 2011-047C

Small Drainage Projects

- Woodbridge SD – Mayfair Ct.
Feb. 11 – Bluffton
 - Cleaned out (1) catch basin; repaired separated joint, catch basin and washout.
 - Cost \$6,142.72

Small Drainage Projects

- Rivers End SD – Rivers End Dr.
Feb. 11 – Bluffton
 - Repaired washout.
 - Cost - \$503.80

Small Drainage Projects

- Braden Rd. – Feb. 11 – Port Royal Isl.
 - Removed tree from workshelf.
 - Cost - \$2,376.48

Small Drainage Projects

- David Green Rd. Outfall – Capers Isl. Cir.
 - Feb. 11 – St. Helena Isl.
 - Project improved 956 L.F. of outfall ditch and installed (1) access pipe.
 - Cost - \$4,677.49

Small Drainage Projects

- Sandy Pointe SD – E. Morningside Dr.
Mar. 11 – Bluffton
 - Cleaned out (1) catch basin; repaired sinkhole and curb inlet.
 - Cost - \$9,040.25

Small Drainage Projects

- Kinton Ct. – Mar. 11 – Bluffton
 - Repaired a washout
 - Cost - \$1,987.54

Small Drainage Projects

- Brickyard Pt. Rd. N. – Mar. 11 – Lady's Isl.
 - Jetted out 40 L.F. of outfall pipe to remove blockage from the flow line.
 - Cost - \$1,256.32

Small Drainage Projects

- Sheppard Rd. – Apr. 11 – Lady's Isl.
 - Cleaned out 627 L.F. of roadside ditch and hydroseeded for erosion control.
 - Cost - \$3,164.12