

Resident's guide to
RECYCLING
& waste disposal
in Beaufort County.



RECYCLE
BEAUFORT

#BringItBeaufortCounty



RECYCLEBEAUFORTSC.COM

Bring it,
**BEAUFORT
COUNTY**

and keep our
BEAUTIFUL

South Carolina
coast happy!

RECYCLE
BEAUFORT 



TABLE OF CONTENTS

RECYCLING	1
Corrugated Cardboard	2
Plastic Bottles, Jugs, & Jars	2
Metal Food & Beverage Cans	2
Glass Bottles & Jars	2
Mixed Paper	2
TRASH DISPOSAL	3
Household Garbage	3
Yard Debris	3
Construction Debris	3
Tires	4
Large Appliances	4
HOUSEHOLD HAZARDOUS WASTE	5
NOT ACCEPTED ITEMS	6
ELECTRONIC WASTE	7
PLASTIC FILM	8
OTHER TYPES OF WASTE	8
Oyster Shells	8
Cooking Oil	9
Farmer Oil	9
Used Motor Oil & Gasoline	9
Oil Filters	9
Prescription Drugs & Sharps	10
SECURE YOUR LOAD	11
Litter Control	11
Keep Beaufort County Beautiful ..	11
CONVENIENCE CENTERS HOURS + LOCATIONS	12



#BringitBeaufortCounty

RECYCLEBEAUFORTSC.COM



RECYCLING

Wishful Recycling...

Wishful recycling, or placing items in the recycling bin that you wish or hope are recyclable could cause more harm than good.

Recycling is a system of collecting and processing used materials that still have value to transform them into new products. **This means, not everything is recyclable.**

Just because a product has a recycling symbol on the bottom does not mean it's recyclable or should be placed in your curbside bin or dropped in a recycling container at your local Convenience Center.

Though most of us are well-intentioned, when we put materials in the bin that do not belong, we're actually contaminating the recycling stream, which negatively impacts our environment and economy.

Please use this booklet as a resource to guide your recycling activity in Beaufort County.

We need your help to **RECYCLE RIGHT!**

What Can be Recycled?

Only the BIG 5 and special materials should be brought to the County Convenience Centers for recycling. Refer to page 2 to know the Big 5.

Where should I take my recyclables?

Beaufort County offers recycling drop-off at certain Convenience Centers. For location information, please see the hours & locations on page 12. You can bring any of the BIG 5 to specific County Convenience Centers.

RECYCLE This...

THE BIG 5



Corrugated Cardboard

This includes any material consisting of a ridged box. Flatten all boxes and remove packing peanuts, plastic bags, bubble wrap, air pillows and styrofoam.

Do not put paperboard (shoe boxes/cereal boxes), pizza boxes, newsprint or junk mail in the cardboard recycling container.



Plastics #1 + #2

PLASTIC BOTTLES, JUGS & JARS



Rinse out any residue, then put the cap back on before you recycle the container. Place all other plastic material in the trash.

Do not put plastic bags, plastic toys, plastic furniture, clamshell containers (strawberry containers, etc.) or other plastic materials in the plastic bottle, jug, and jar recycling container.



Metal Food & Beverage Cans

RECYCLE ALUMINUM, TIN & STEEL CANS

Rinse out any residue.

Do not put cooking pots & pans, metal hangers, foil or pie plates, newsprint, or junkmail in the metal recycling container.



Glass Bottles & Jars

RECYCLE CLEAR, BROWN, & GREEN GLASS

Rinse out any residue and throw away the lids.

Do not put dishes, glassware, window glass, vases, or any other glass material in the glass recycling container.



Mixed Paper



This includes junk mail, newspaper, magazines, phone books, office paper, cereal boxes, soda boxes and shoeboxes, or any paper that doesn't fall into the category of corrugated cardboard.

Do not put corrugated cardboard in the mixed paper recycling container.

TRASH DISPOSAL

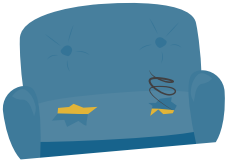
Yard Waste

CLASS 1

Yard Waste is taken at all County Convenience Centers in small amounts. Small amounts are a pickup or a 5'x8' trailer load. If your yard branches or limbs are greater than 6 inches in diameter and eight feet in length or you have larger quantities of yard waste please use the landfill below:

Oakwood Landfill:

726 Strohart Way
Ridgeland, SC 29936



Bulky Items

CLASS 2



Items such as furniture, toys and miscellaneous bulky items taken to Convenience Centers should be placed into the Class 2 Container at the County Convenience Center. Ask the center attendant if you have any questions.

Household Garbage

CLASS 3

Municipal Solid Waste (MSW), more commonly known as trash or garbage - consists of everyday items we use and then throw away. Bring bagged MSW or trash to the County Convenience Centers.



Construction & Demolition Debris



Construction and Demolition (C&D) materials include: lumber scraps, sheetrock, shingles, wallboard, plaster, cabinets, or carpet. C&D is accepted at ALL County Convenience Centers. Convenience Centers have limited capacity, so residents with larger amounts of debris are required to take them to the: **Oakwood Landfill:**

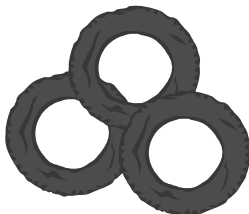
726 Strohart Way
Ridgeland, SC 29936

LARGE ITEMS & AMOUNTS OF TRASH

Beaufort County Convenience Centers will accept the following large items:

Tires

Car
Truck
Motorcycle

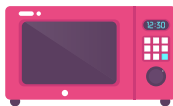


Appliances & Scrap Metal*

* Please remove doors from appliances prior to drop off



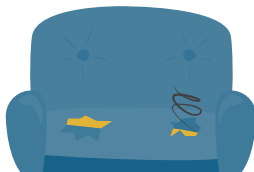
Refrigerators & Freezers
Washing Machines
Microwaves
Dryers



* Only accepted at the following Convenience Centers: Bluffton, Hilton Head, Shanklin & St. Helena

Bulky Items*

Dressers
Mattresses
Sofas
Tables



* Only accepted at the following Convenience Centers: Bluffton, Hilton Head, Shanklin & St. Helena

NOTE: Trailers are only allowed at the following Convenience Centers (per safety): Bluffton, Hilton Head, Shanklin, and St. Helena. Trailers cannot be larger than 5 feet by 8 feet at these four centers. Limit two loads per residential address per day.

HOUSEHOLD HAZARDOUS WASTE

Beaufort County Residents may bring household hazardous waste (HHW) to the County Convenience Centers.

Accepted Items

- Antifreeze
 - Automotive & Boat Products
 - Rechargeable Batteries
 - Cleaning Products
 - Fire Extinguishers
 - Fluorescent Bulbs
 - Gasoline
 - Hobby Chemicals
 - Lawn Treatments, including
 - Herbicides & Pesticides
 - Cooking & Frying Oils
 - Stains, & Varnishes
 - Paint
 - Rust Inhibitors
 - Turpentine & Thinners
 - Photographic & Pool Cleaners
- Plus other items with labels containing the words:
WARNING, DANGER
or **CAUTION**
- 
- 
- 
- 
- 
- 

Important Reminders!

Only those items listed above are accepted.



Empty containers from **paint** and other items that **previously contained liquids** are **not accepted** and should be **disposed of as trash**.

NOT ACCEPTED

The following items are not accepted at any Beaufort County Convenience Center.

Prohibited Items



Ammunition
Fireworks
Medical Waste
Smoke Detectors
Syringes

Commercial Waste

Commercial solid waste is defined as any **solid waste** generated by **industrial, commercial** or **business activities**.

The business is responsible for transport and disposal fees.

The use of any Beaufort County Convenience Center for the disposal of commercially generated solid waste is strictly forbidden by Beaufort County Ordinance.

We do NOT ACCEPT items from businesses, industries, or manufacturers.

Did you know?

Beaufort County **DOES NOT** provide curbside trash pick-up.

Please contact your trash hauler to inquire about or make special arrangements for:

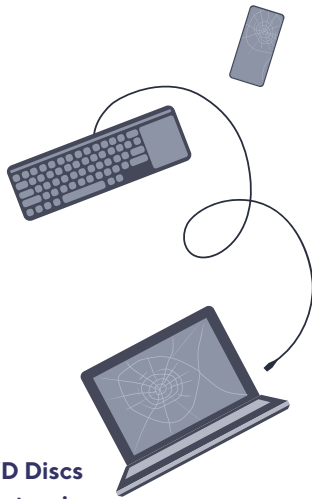
Billing Questions
Missed Collections
Trash Pickup days & times
Trash Bins (New or Replacement)
Other questions regarding curbside trash disposal

ELECTRONIC WASTE

Beaufort County hosts special E-Waste collection events. Visit RecycleBeaufortSC.com for event details, dates, and times.

Accepted Items

- Cell Phones
- Televisions
- Computers
- iPads/Tablets
- Lamps
- Fax Machines
- Monitors
- Laptops
- Printers
- Hard Drives
- Radios
- Typewriters
- DVD Players & DVD Discs
- Miscellaneous Electronics
- Portable Electronic Gaming Consoles

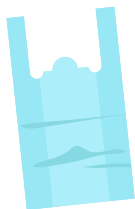


Did you know?

Electronic Recycling (E-Waste): South Carolina passed legislation in 2010 that banned the disposal of specific electronics in solid waste landfills effective July 1, 2011. The law was revised on March 4, 2014, to add more specific requirements and recovery obligations for computer monitors, televisions, and manufacturers.

PLASTIC FILM

Plastic film **ONLY ACCEPTED** at the following Convenience Centers: **Bluffton, Hilton Head, Shanklin & St. Helena. Must be clean and dry.**



Accepted Items

- Air Pillows
- Bubble Wrap
- Dry-Cleaning Bags
- Food Storage Bags
- Napkins/Paper Towel Packaging
- Newspaper Bags
- Plastic Shopping Bags
- Produce Bags

Prohibited Items

Black Bags



OTHER TYPES OF WASTE



Oyster Shells

The public can bring their oyster shells to local drop off-sites for oyster shell recycling.

DROP-OFF SITES ARE:

**Beaufort County Public Works,
Trask Landing, Coastal Discovery Museum,
Sands Beach Boat Landing,
Edgar Glenn Boat Landing,
Hunting Island, and St. Helena Island.**

OTHER WASTE CONT...

Cooking Oil

Recycle your cooking oil at the Beaufort County Convenience Centers.

If you pour greasy oil down the drain, it will solidify and eventually clog your pipes. To recycle, use the original container, secure the lids, and place near the paint shed area.



Farmer Oil

Recycle oil from farm machinery.
55 gallon limit.

DROP-OFF SITE:
Lobeco Convenience Center
6 Keans Neck Road, Lobeco, SC 29931

Used Motor Oil

All Beaufort County Convenience Centers accept used motor oil.

The following petroleum products are **NOT ACCEPTED** in used oil collection tanks at Beaufort County Convenience Centers:

Varsol, Brake Fluid, Paint Thinner, Refrigeration Oil, Antifreeze, Solvent Cleaner, or any substance used to clean Paint Brushes.



Oil Filters

Used oil filters can be processed to recycle both the used oil and steel remains.

Oil filters ARE ACCEPTED at all Beaufort County Convenience Centers. Please place in the appropriate container.

Oil/Gasoline Mixture

These mixtures go into the **Red Tanks** at the Bluffton Center, Pritchardville Center, Shanklin Center, Sheldon Center, and St. Helena Center.

ACCEPTED FLUIDS INCLUDE:
Motor, Gear, Heating & Fuel Oils, Oil/Gasoline Mixture, Diesel Fuel & Kerosene, Automotive Transmission, Steering & Hydraulic Fluids.

PRESCRIPTION DRUGS & SHARPS

Prescription Drugs

The Beaufort County Sheriff's Office, in conjunction with Beaufort Memorial Hospital offers safe places to properly dispose of extra or unused prescription medications instead of flushing them into the sanitary sewer system.

There are three drug drop-off boxes in Beaufort County:

BEAUFORT

Beaufort County Sheriff's Office
2001 Duke Street, Beaufort, SC 29902

BLUFFTON

Beaufort County Government Building
4819 Bluffton Parkway, Bluffton, SC 29910

HILTON HEAD

Beaufort County Sheriff's Office
58 Shelter Cove Lane, Hilton Head, SC 29928

Sharps

DHEC developed the "Get the Point" program, a safe, simple and convenient way to dispose of sharps. Home-generated sharps should be disposed of in an empty bleach or detergent bottle.

First, place the free warning sticker from (scdhec.gov) on the bottle and place the needles inside the bottle. Once the bottle is about 3/4 full, the cap should be tightly secured. Then, discard the bottle in the household trash.

For more information, visit www.scdhec.gov

SECURE YOUR LOAD!

An unsecured load is the #1 source of litter and is illegal. Regardless of what a vehicle is hauling, its load must be covered or secured to prevent the load from escaping from the vehicle. South Carolina state law states that no vehicle shall be driven or moved on any public highway unless such vehicle is constructed, loaded or covered to prevent load from dropping, escaping, or shifting in a manner that creates a safety hazard or deposits litter on public or private property.

Keep Beaufort County Beautiful offers **FREE tarps** to encourage citizens to secure their loads and bring awareness to drivers on state litter laws.



To receive a tarp contact **Litter Control** at **(843) 255-2817**.

For more information about **Keep Beaufort County Beautiful** contact a **KBCB Representative** at **(843) 255-2734**.

5 Easy Ways to be a zero-Tolerance for Litter Citizen

1. Tarp and/or secure your load to your truck or trailer.
2. Use proper containers to dispose trash.
3. Join an Adopt-A-Highway group to take part in organized clean up & beautification events.
4. Never throw away anything, including cigarette butts from your car or truck.
5. When you witness a litterbug in action, report it to the litter control supervisor: (843) 255-2817.



CONVENIENCE CENTER HOURS + LOCATIONS

HOURS OF OPERATION
7:30 AM - 6:00 PM

***All locations are CLOSED**
on County Holidays.

BLUFFTON

104 Simmonsville Road
Bluffton, SC 29910

HILTON HEAD

26 Summit Drive
Hilton Head Island, SC 29926

SHANKLIN

80 Shanklin Road
Beaufort, SC 29906

ST. HELENA

639 Sea Island Parkway
St. Helena Island, SC 29920

GATE

316 Castle Rock Rd.
Beaufort, SC 29906

PRITCHARDVILLE

270 Gibbet Road
Bluffton, SC 29910

OPEN

SUNDAY
MONDAY
TUESDAY
THURSDAY
FRIDAY
SATURDAY

CLOSED
WEDNESDAY

BIG ESTATE

63 Big Estate Road
Yemassee, SC 29945

COFFIN POINT

10 Cee Cee Road
St. Helena Island, SC 29920

LOBECO

6 Keans Neck Road
Seabrook, SC 29940

OPEN

MONDAY
THURSDAY
SATURDAY

CLOSED
SUNDAY
TUESDAY
WEDNESDAY
FRIDAY

CUFFY

152 Cuffy Road
St. Helena Island, SC 29920

SHELDON

208 Johnson Road
Seabrook, SC 29940

OPEN

SUNDAY
TUESDAY
FRIDAY
CLOSED
MONDAY
WEDNESDAY
THURSDAY
SATURDAY

For more information, contact the Solid Waste and Recycling section at 843-255-2823 or visit online at Beaufortcountysc.gov/recycle

GO GREEN
KEEP IT'
CLEAN!



DO YOU KNOW

what is recyclable at the
Beaufort County
Convenience Center?

View this Recycling Guide
to find out!

