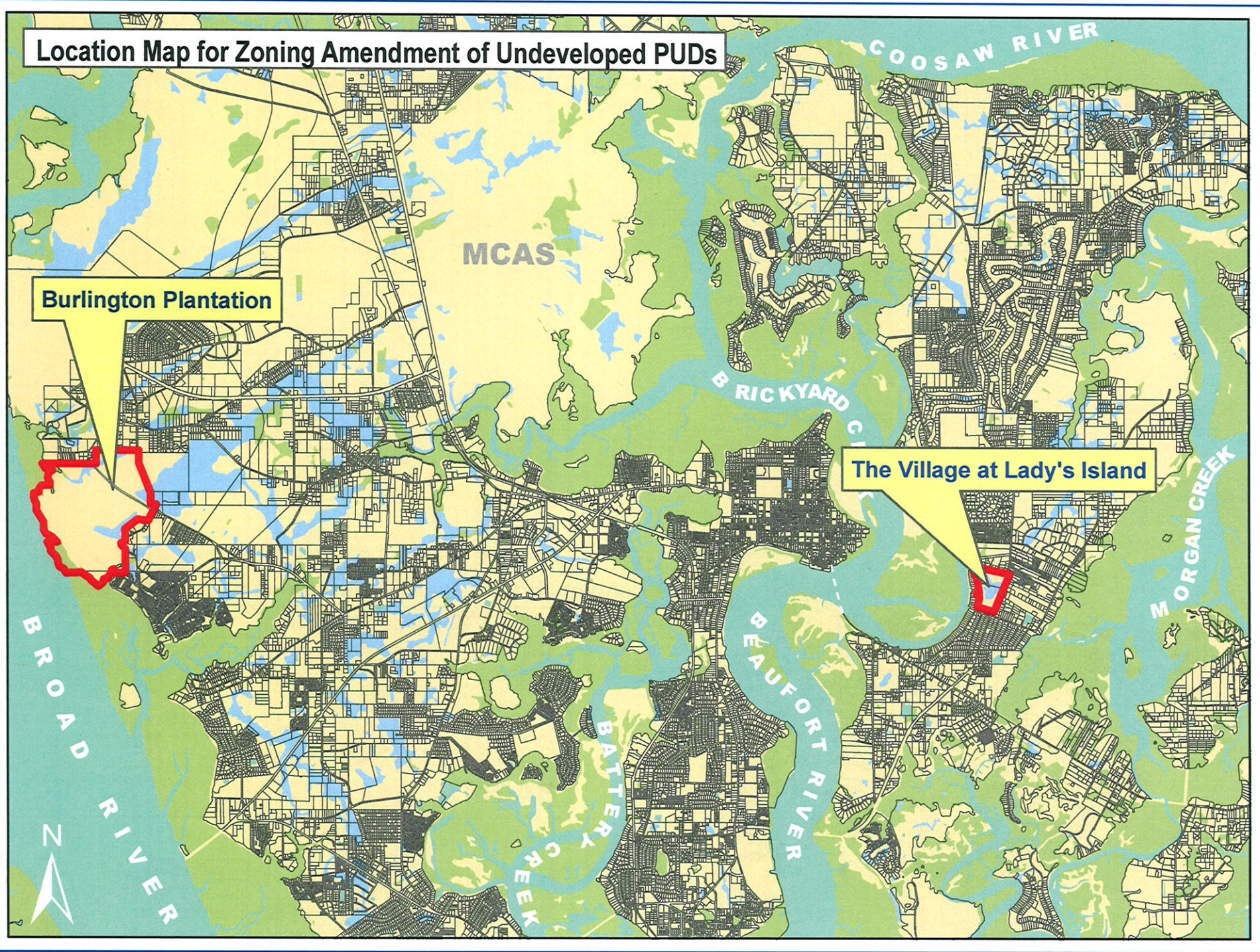


Location Map for Zoning Amendment of Undeveloped PUDs



Burlington Plantation

The Village at Lady's Island

MCAS

COOSAW RIVER

BRICKYARD C

MORGAN CREEK

BEAUFORT RIVER

BATTERY CREEK




BROAD RIVER



LEGEND

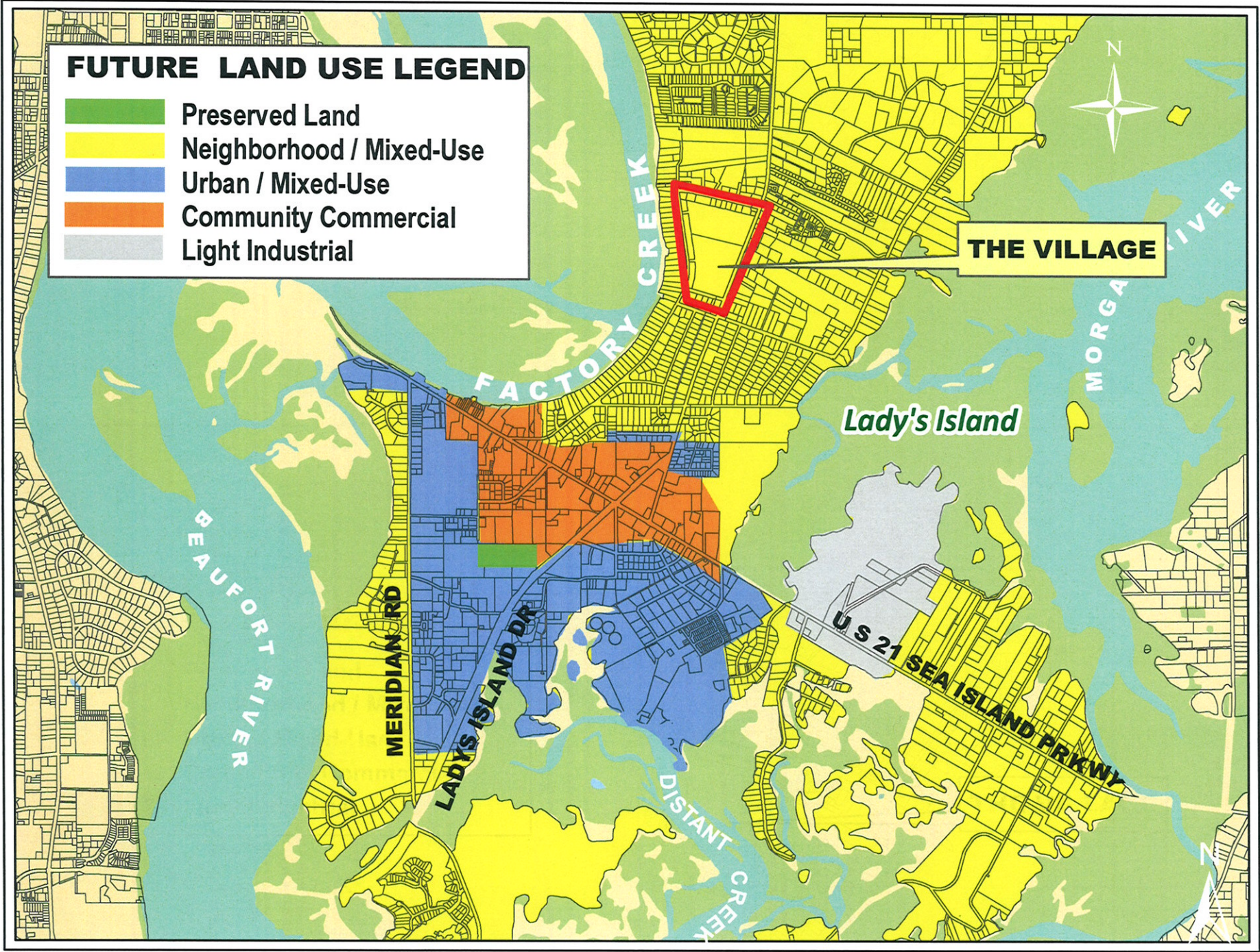
- MULTI FAMILY
- MIXED USE
- SINGLE FAMILY
- OPEN AREA



		111 GARDEN STREET CHARLESTON, S.C. 29401 PHONE: (803) 733-5888	 P.O. BOX 37 CHARLESTON, S.C. 29405 FAX: (803) 733-1004
		SHEET 2 OF 127 DATE: 12/24/04	APPROVED: [Signature] [Signature]
THE VILLAGE @ LADY'S ISLAND PUD FOR McNEAL LAND COMPANY		DRAWING NUMBER 700-00	

FUTURE LAND USE LEGEND

-  Preserved Land
-  Neighborhood / Mixed-Use
-  Urban / Mixed-Use
-  Community Commercial
-  Light Industrial



THE VILLAGE

Lady's Island

BEAUFORT RIVER

MERIDIAN RD

LADY'S ISLAND DR

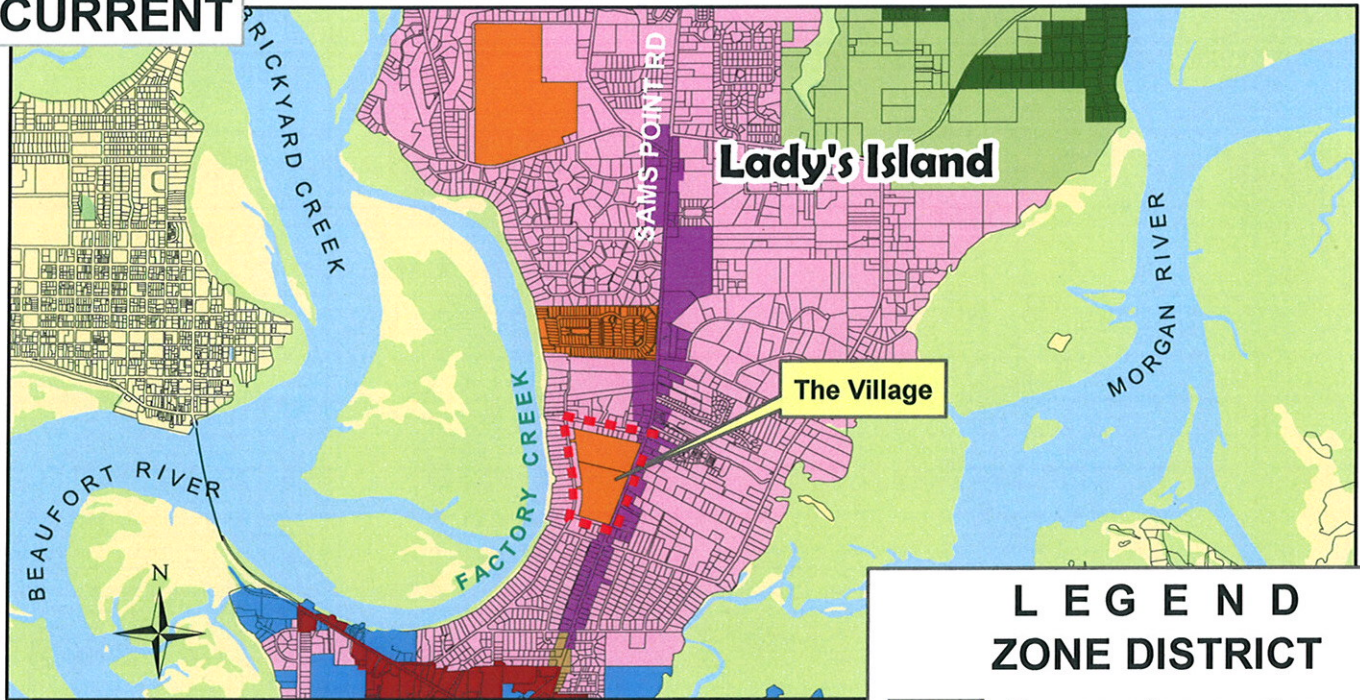
FACTORY CREEK

DISTANT CREEK

U.S. 21 SEA ISLAND PRKWAY

MORGANA RIVER

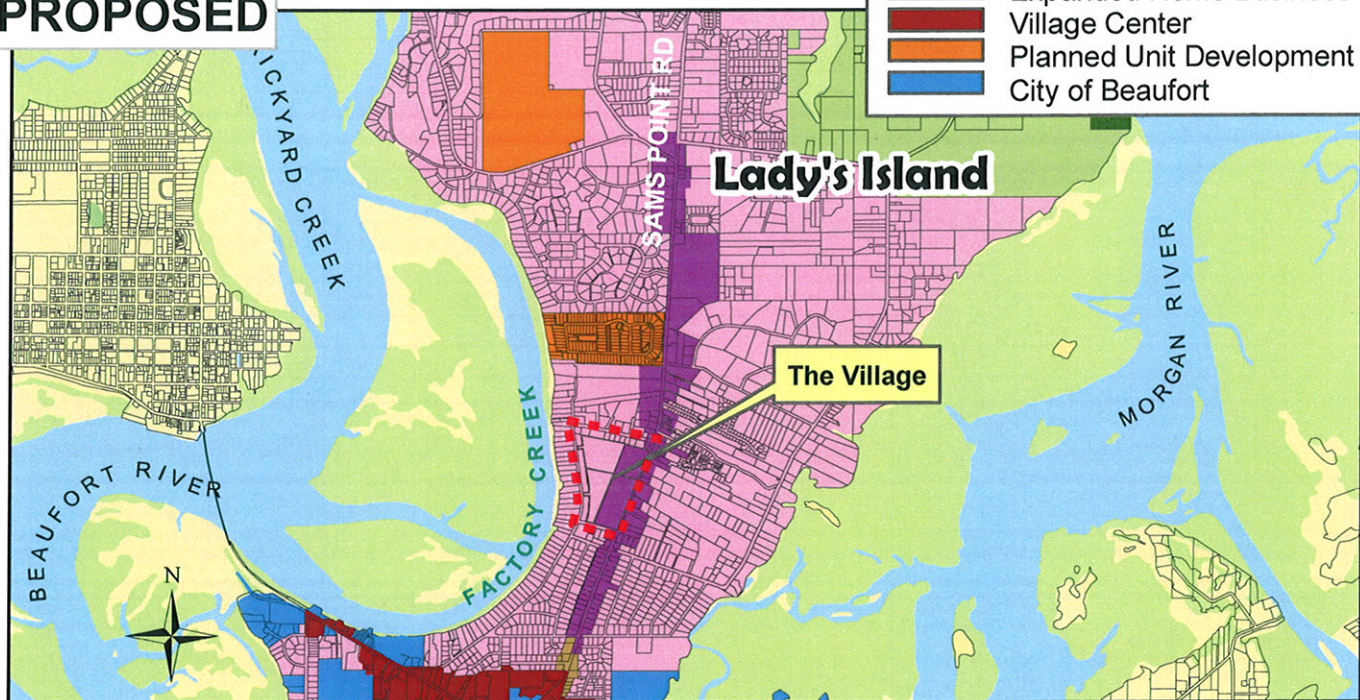
CURRENT



LEGEND ZONE DISTRICT

- Resource Conservation
- Rural
- Rural Residential
- Lady's Is CP
- Expanded Home Business LICP
- Village Center
- Planned Unit Development
- City of Beaufort

PROPOSED



REZONING AMENDMENT

R200 015 000 0051 & 051A The Village
*FROM Planned Unit Development [PUD] TO
Lady's Island Community Preservation [LICP] and
Lady's Island Expanded Home Business [LIEHB]*