

COUNTY COUNCIL OF BEAUFORT COUNTY

ADMINISTRATION BUILDING
100 RIBAUT ROAD
POST OFFICE DRAWER 1228
BEAUFORT, SOUTH CAROLINA 29901-1228
TELEPHONE: (843) 255-1000
FAX: (843) 255-9401
www.bcgov.net

D. PAUL SOMMERVILLE
CHAIRMAN

STEWART H. RODMAN
VICE CHAIRMAN

COUNCIL MEMBERS

CYNTHIA M. BENSCH
RICK CAPORALE
GERALD DAWSON
BRIAN E. FLEWELLING
STEVEN G. FOBES
WILLIAM L. MCBRIDE
GERALD W. STEWART
ROBERTS "TABOR" VAUX, JR.
LAURA L. VON HARTEN

GARY KUBIC
COUNTY ADMINISTRATOR

BRYAN J. HILL
DEPUTY COUNTY ADMINISTRATOR

JOSHUA A. GRUBER
COUNTY ATTORNEY

SUZANNE M. RAINEY
CLERK TO COUNCIL

AGENDA PUBLIC FACILITIES COMMITTEE

Monday, August 18, 2014

4:00 p.m.

Conference Room, Building 3

Beaufort Industrial Village

104 Industrial Village Road, Beaufort

Committee Members:

Gerald Dawson, Chairman
Steve Fobes, Vice Chairman
Cynthia Bensch
Rick Caporale
Brian Flewelling
William McBride
Jerry Stewart

Staff Support:

Rob McFee, Division Director

1. CALL TO ORDER – 4:00 P.M.
2. CONSIDERATION OF CONTRACT RENEWAL
 - A. Unifirst Rental Uniform Service - \$60,000 ([backup](#))
3. STATUS / STORMWATER UTILITY RELATED TO PENDING MS4 IMPLEMENTATION ([backup](#))
4. DISCUSSION / DRAINAGE EASEMENT ACQUISITION POLICY ([backup](#))
5. CONSIDERATION OF CONTRACT AWARDS
 - A. Stormwater Consulting for Engineering Services ([backup](#))
 - B. Buckwalter Regional Park Community Center Phase 2 Expansion Design Build Project ([backup](#))
 - C. Burton Wells Regional Park Recreation Center Vestibule Improvements ([backup](#))
 - D. Government Complex Parking Lot Stormwater Retrofit Project ([backup](#))
6. UPDATE / MALPHRUS ROAD / BLUFFTON PARKWAY INTERSECTION ESTIMATE ([backup](#))
7. AN ORDINANCE AUTHORIZING THE BLUFFTON TOWNSHIP FIRE DISTRICT TO GIVE AND RECEIVE MUTUAL ACCESS EASEMENTS WITH THE BEAUFORT COUNTY SCHOOL DISTRICT



Agenda - Public Facilities Committee

August 18, 2014

Page 2

8. AN ORDINANCE ESTABLISHING, DEVELOPING AND CONSTRUCTING MULTI-USE RECREATION TRAILS AND RESTRICTING THE USE THEREOF TO NON-MOTORIZED ACTIVITIES ([backup](#))

9. BLUFFTON PARKWAY 5A FLYOVER COLOR OPTIONS [*dcmw](#) +

10. EXECUTIVE SESSION

A. Discussion of negotiations incident to proposed contractual arrangements and proposed purchase of property

11. ADJOURNMENT

2014 Strategic Plan: Committee Assignments

Animal Services Facility: Evaluation and Direction (*Goal Accomplished June 2014*)

Bridge Replacement Plan and Funding Mechanism

County Information Technology Upgrade Plan

Countywide Telecommunications Infrastructure Master Plan: Development and Funding

Long Range Regional Transportation Model/Plan: Development

Pinckney Island: Plan and Funding

Transfer Station: Direction



COUNTY COUNCIL OF BEAUFORT COUNTY
PURCHASING DEPARTMENT
106 Industrial Village Road, Building 2
Post Office Drawer 1228
Beaufort, South Carolina 29901-1228

TO: Councilman Gerald Dawson, Chairman, Public Facilities Committee
FROM: Dave Thomas, CPPO, Purchasing Director *DT*
SUBJ: **Recommendation for Beaufort County Departmental Contract Renewals**
DATE: August 18, 2014

In order to improve our process for renewing annual contracts I have provided a summary sheet (please see attached excel spreadsheet) for your committee's review and approval. The summary sheet provides the vendor name, purpose, department, account name and number, prior and current cost, term and remarks. The department head responsible for the contract or their representative will be available for questions during the Committee meeting.

FOR ACTION: Public Facilities Committee meeting August 18, 2014.

RECOMMENDATION: The Purchasing Department recommends that the Public Facilities Committee approve the contract renewals as stated in the attached summary sheet.

CC: Gary Kubic, County Administrator *GKubic*
Bryan Hill, Deputy Administrator *BH*
Alicia Holland, Chief Financial Officer *AH*

Att: Contract renewal summary sheet

Beaufort County, South Carolina
 Fiscal Year 2015 Contract Renewals
 Public Facilities Committee

	Vendor	Purpose	Department	Account #/Name	FY 2015 Cost	FY 2014 Cost	Term (Beg/End)
				10001301-52050			
				10001302-52050			
				10001311-52050			
				10001312-52050			
				10001320-52050			
				10001321-52050			
				10001340-52050			
				10001343-52050			
				10001344-52050			
			Public Works	10001345-52050			
			Facilities Management	10001347-52050			
			Solid Waste	10001348-52050			
			Mosquito Control	10001400-52050			
1.	Unifirst Corporation	Provides uniform services for various departments	Stormwater	50250011-52050	\$ 60,000	\$ 58,380	7/1/2014
				Uniforms			6/30/2015

Note: This contract is a unit price contract. The FY 2015 cost is an estimated cost.

August 18, 2014



*UniFirst Corporation
5 Chandler Street
Richmond Hill, GA 31324*

August 7, 2014

Dear Mr. Thomas,

In reference to bid number IFB # 3983/100567, UniFirst agrees to the final one year option of this bid, and will not increase current pricing for the additional renewal year from July 1, 2014 through June 30, 2015.

Thank you for your continued business!

Sincerely,

A handwritten signature in black ink that reads "Steve Walter" followed by the date "8/7/14".

**Steve Walter
Branch Manager
UniFirst Corporation
912-459-1573**




BEAUFORT COUNTY STORMWATER UTILITY
120 Shanklin Road
Beaufort, South Carolina 29906
Voice (843) 255-2801 Facsimile (843) 255-9478



INTEROFFICE MEMORANDUM

TO: Public Facilities Committee

FROM: Eric W. Larson, Stormwater Manager 

SUBJECT: Pending MS4 implementation – understanding the program requirements

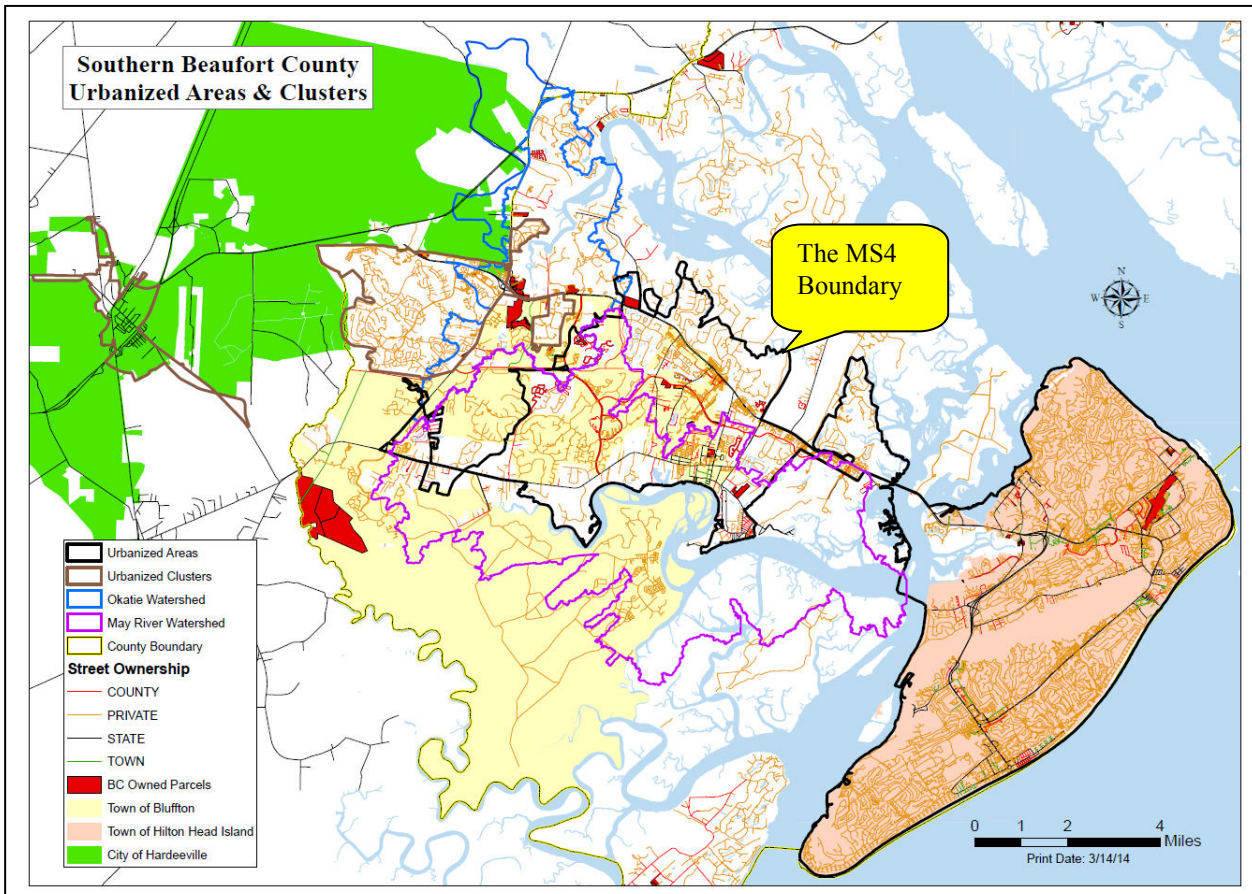
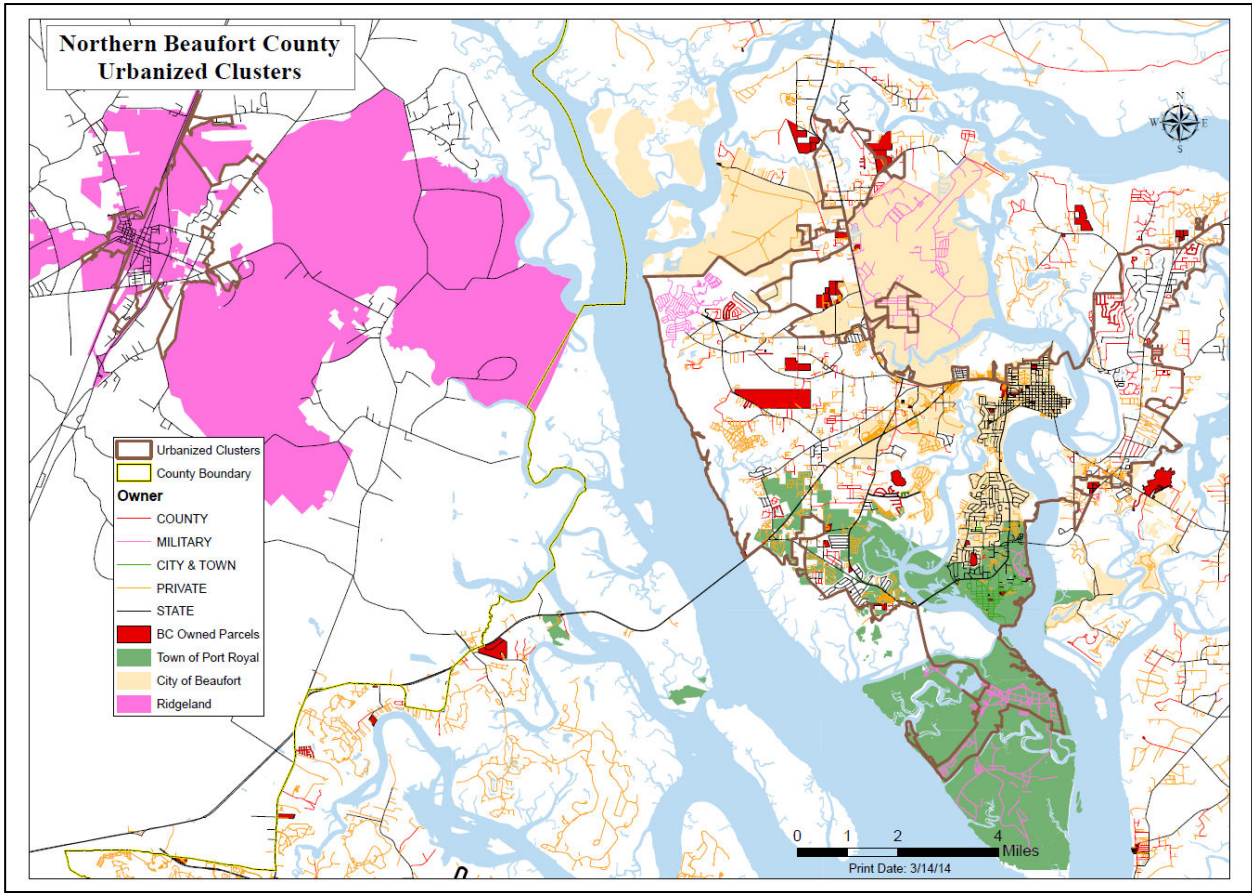
DATE: August 18, 2014

Introduction

After several years of consideration, the South Carolina Department for Health and Environmental Control (DHEC) has advised the County and the Towns of Bluffton and Hilton Head that they will be regulated under the Municipal Separate Stormsewer System (MS4) water quality program. As background, the United States Environmental Protection Agency's (EPA) Clean Water Act (CWA) was enacted in 1972 to address degrading water quality nationwide. The CWA addresses both point source and non-point source pollution. Stormwater is considered a non-point source of pollution since pollutants come from many sources, not just a single facility. In 1999, Phase I implementation of the non-point source program focused on MS4s with population over 100,000. Phase II started in 2003 and the "bar was lowered" to communities with 50,000 population or urban density thresholds. As a result of the 2010 U.S. Census, portions of southern Beaufort County met the density and population threshold and became designated as a MS4 by DHEC.

Coverage Area

The coverage area roughly overlaps the Towns of Bluffton and Hilton Head with fragmented areas of unincorporated Beaufort County. (See the maps on the next page – the black outline is the MS4 boundary as defined by DHEC). More significantly, the MS4 boundary **will not** include the urbanized clusters "north of the Broad River", specifically the Town of Port Royal and the City of Beaufort. The Sun City urbanized cluster is also not included. The County maintains roads and stormsewer infrastructure that exists throughout the limits of the Towns of Bluffton and Hilton Head, resulting in an interwoven MS4 boundary for the County



MS4 Program Elements

The MS4 program will require new programs and activities that we will have to implement. The CWA and the DHEC MS4 General Permit defines a Stormwater Management Plan (SWMP) that addresses six (6) Minimum Control Measures (MCM). They include:

- Public Education
- Public Outreach and Involvement
- Illicit Discharge, Detection, and Elimination (IDDE)
- Construction Run-Off
- Post Construction Best Management Practices (PC-BMP)
- "Good Housekeeping" in Municipal Operations

There is an additional program element that requires the development of a Monitoring program, including specific guidelines for water bodies found to be impaired and have Total Maximum Daily Load (TMDL) allocations (e.g. The Okatie River) developed for them. Last, record keeping and data management is required to document permit compliance.

Public Education, Outreach, and Involvement - The County has had an effective Public Education and Outreach program in the past. The MS4 permit will require specific and measurable goals to be developed. Target audiences and focused messages will be required. We will be required to create opportunities for involvement. Our goal will be to continue what we have done in the past and build upon that. The key to success will be partnerships with all municipal bodies to develop a unified message. One aspect of public outreach will be expansion of informal advisory groups to "weigh in" on our program. The existing Stormwater Implementation Committee (SWIC), which has traditionally been made up of the stormwater coordinators for each municipal body, will likely be expanded to better reflect the development and water quality community.

Illicit Discharge, Detection, and Elimination - The IDDE program serves as the foundation of the remaining MCMs and represents a new element that the County has not focused on in the past. Permit tasks include developing a system map to serve as the MS4 inventory and be used as a tool to track inspections and system condition assessment. The County has a robust GIS system and has made significant advances in the completeness of the map. However, a large gap in coverage and detail exists. A perpetual effort is needed to complete the map and keep it current as the County continues to grow.

The other aspect of the IDDE program is the identification and removal of non-stormwater flows into the stormsewer system. This duty has fallen onto DHEC staff in the past but will become a local effort. Routine inspection of the stormsewer system will find the "hotspots" and the mapping tool will be used to track the source. The adoption of an IDDE ordinance will prohibit these flows and a written plan will provide a mechanism for enforcement.

Construction Run-Off - Construction run-off, or erosion control on construction sites, is long recognized as a traditional stormwater pollution source. Similar to the IDDE efforts, DHEC has been the lead and provided the permitting and enforcement of regulations against sediment loss on construction sites. With the evolution of the MS4 permit, this task falls on the local jurisdictions. Ordinance and guidance document development will be needed to require stormwater pollution prevention plans (SWPPP), permitting, inspections, and enforcement.

Post – Construction Best Management Practices - On-lot volume control and the County BMP manual are examples of County successes towards the PC-BMP MCM. However, it isn't enough. Like the IDDE and Construction programs, design, construction, inspection, and enforcement guidelines will be required by ordinance and amendments to our guidance documents. Physically, we won't see much change in how

a site is developed, but the administrative process will change significantly. Inspection of publicly owned and privately maintained BMPs will be a huge component of the program and something the County has not actively engaged in.

"Good Housekeeping" in Municipal Operations - The last MCM is focused on the maintenance and operations of municipal properties and infrastructure to assure we are not contributing to water quality problems. There are two sub sets of this MCM. We must develop an inventory of all buildings that conduct activities that could potentially pollutant the receiving stormsewer system and streams. Each facility must be inspected and a plan prepared to address handling of hazardous materials, maintaining equipment, etc. Two good examples are handling of used oil in a mechanic's shop and what to do if it is spilled and washing of vehicles so that the soaps, oils, and dirt are captured prior to discharge.

The other part of "good housekeeping" is maintenance and operation of our "MS4", the stormsewer system. Using the mapping and inventory developed for the IDDE program, we need to inspect the condition of the system on a regular basis so that we can fully understand our maintenance and rehabilitation needs and prioritize repairs and/or justify funding level increases.

Monitoring - With the implementation of the MS4 permit, our monitoring efforts will increase. We will use the system mapping to identify our outfalls into the Waters of the State and establish a dry and wet weather sampling plan. Our list of constituents of concern will grow and monitoring will involve field testing in addition to sampling and lab analysis.

Moving Forward

The Stormwater Utility has been very successful since its formation. MS4 marks the next milestone for Beaufort County. There are three initiatives that will aide in the success of the new MS4 program:

- 1) The success of the establishment of the new MS4 program will rely on partnerships and input from stakeholders and advisory groups. The use of the SWIC and the advice of the Stormwater Utility Board will define how the program looks as it moves forward. Gaining support for the MS4 program from these groups will be critical to the success of the program.
- 2) Shared resources available through the USCB lab is another important part of the envisioned MS4 program. Significant investment has been made in the USCB water quality lab by the County and Town of Bluffton. The County, Town of Bluffton, Town of Port Royal, and City of Beaufort already utilize the lab for our water quality monitoring work. The lab's recent upgrade in equipment and staff will allow us to expand our monitoring program to meet the demands of the MS4 program. Encouraging other municipal bodies, private entities, industrial and commercial clients, and federal agencies to also utilize the lab will help provide consistent and timely service and allow USCB to build its water quality programs to benefit the community for years to come.
- 3) The requirement for on-lot volume control, along with the elements of the MS4 program, has prompted the need for an update to the 2006 Beaufort County Stormwater Management Plan. The update will identify new capital needs that will be consistent with our new program requirements. The Management Plan update will set the course for the next 13+ years.

Status of the Stormwater Utility related to Pending MS4 Implementation

A Report to Beaufort County Council
August 18, 2014



Outline

- Introduction of MS4
- MS4 Coverage Area
- MS4 Program Elements
- Implementation Strategy



What is MS4?

- US EPA's Clean Water Act
 - Enacted in 1972
- Point source pollution
- Non-point source pollution
 - Municipal Separate Stormsewer Systems (MS4)
 - Phase I – 1999
 - Phase 2 – 2003
- 2010 U.S. Census expands urban areas of County and SC-DHEC responds



Where is the MS4(s)?

- The Urbanized Area of southern Beaufort County
- Urban Clusters north of the Broad River not included
- Significant overlap between the Towns of Hilton Head Island and Bluffton and unincorporated areas of the County within the Urbanized Area



Municipal Jurisdiction Overlay

Southern Beaufort County Urbanized Areas & Clusters

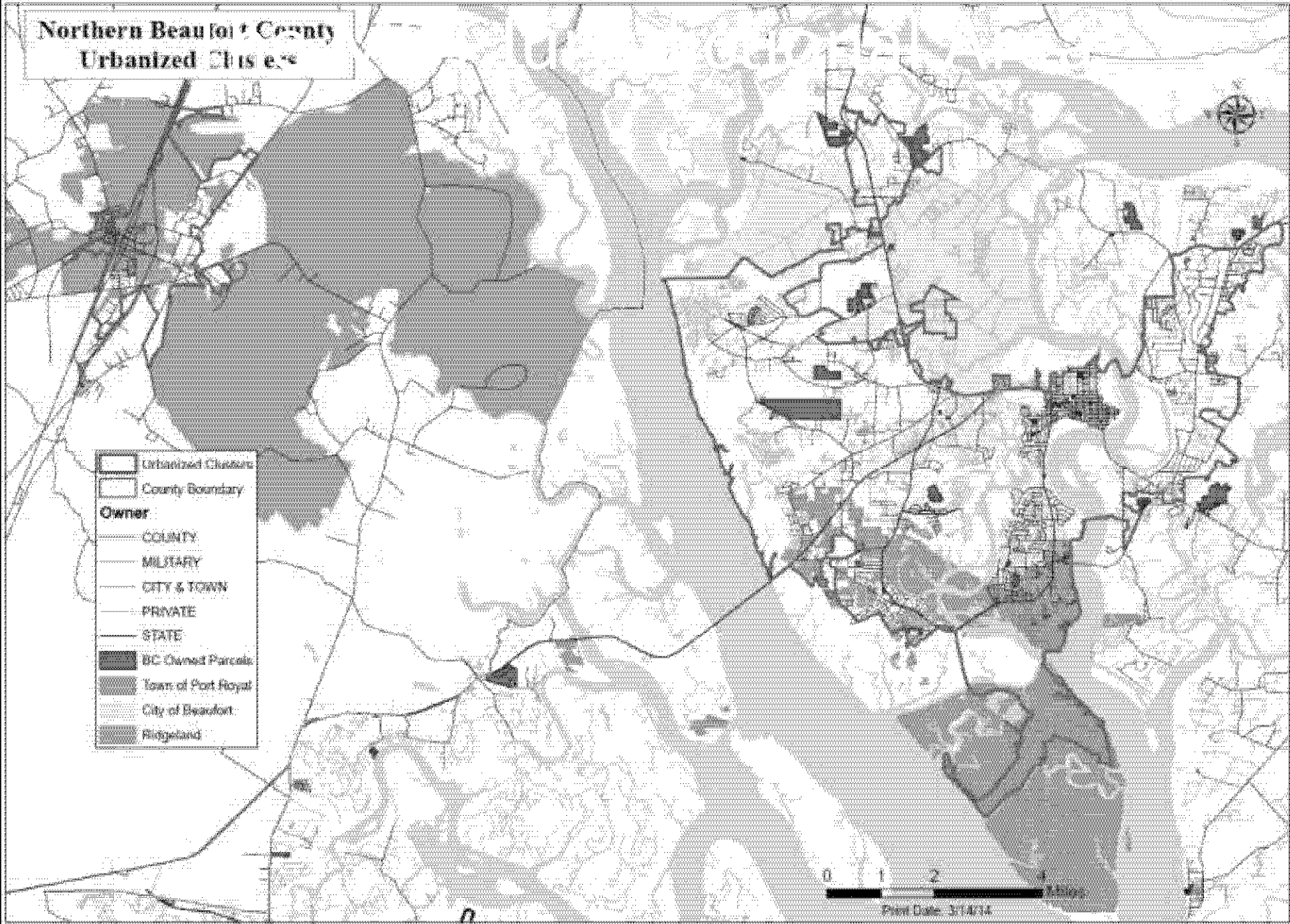
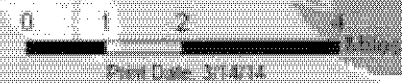
- Urbanized Areas
- Urbanized Clusters
- Okatie Watershed
- May River Watershed
- County Boundary
- Street Ownership**
- COUNTY
- PRIVATE
- STATE
- TOWN
- BC Owned Parcels
- Town of Bluffton
- Town of Hilton Head Island
- City of Hardeeville



Print Date: 3/14/14

Northern Beaufort County Urbanized Districts

- Urbanized Districts
- County Boundary
- Owner**
- COUNTY
- MILITARY
- CITY & TOWN
- PRIVATE
- STATE
- BC Owned Parcels
- Town of Port Royal
- City of Beaufort
- Ringeland



The MS4 Program Elements

- Minimum Control Measures (MCM)
 - Public Education
 - Public Outreach and Involvement
 - Illicit Discharge, Detection, and Elimination (IDDE)
 - Construction Run-Off
 - Post – Construction Best Management Practices (PC-BMP)
 - Good Housekeeping in Municipal Operations



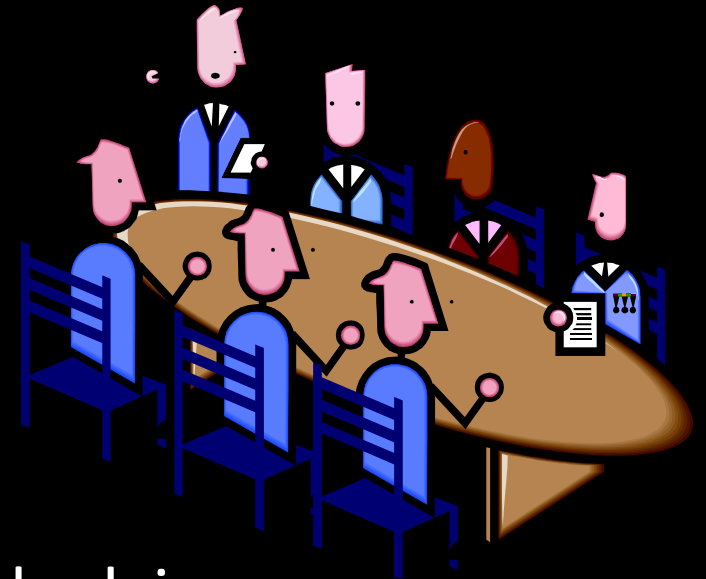
MCM1 - Public Education

- Permit requires:
 - Identify target audiences
 - Develop focused messages
- Goal = Continue past efforts and grow the program with an unified message
- Our greatest opportunity for partnerships among municipalities



MCM 2 – Public Outreach and Involvement

- Permit requires
 - Development of informal advisory groups
 - Create involvement opportunities
- Recommendation is to expand membership of the Stormwater Implementation Committee (SWIC) to better reflect the development and water quality community



MCM 3 - IDDE

- Permit requires
 - System map
 - Ordinance prohibiting non-stormwater flows
 - Inspection program
 - Enforcement
- Pushes DHEC authority to the local level
- Consistent countywide regulation is needed



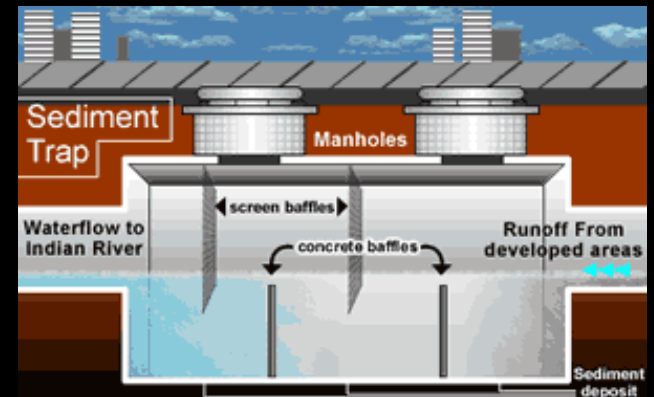
MCM 4 – Construction Run Off

- Permit requires
 - Ordinance requiring local erosion control program, including Stormwater Pollution Prevention Plans (SWPPP)
 - Inspection
 - Enforcement
- Like IDDE, a consistent program is needed as DHEC jurisdiction is delegated to multiple municipalities in the County



MCM 5 – PC-BMP

- Permit requires
 - Ordinance requiring PC-BMPs
 - Plan review and inspection (public AND private)
 - Enforcement
- Recommendation is to revisit the On-lot Volume Control and BMP manual
 - Add the program components not in place



MCM6 – Good Housekeeping

- Permit requires
 - Inventory and assessment of the “MS4”
 - Buildings and facilities
 - Stormsewers
 - BMPs
- Goal = Assess our “Assets” and develop a strategy for long term maintenance and operations



Monitoring

- Permit requires
 - Identification of Outfalls (See IDDE)
 - Wet and Dry Weather screening
 - Constituents for testing will grow
 - Lab and field analysis
- TMDL requires additional effort



Moving Forward

- Build partnerships and gain support
- Continue to develop the water quality lab at USCB
 - Expand use of the lab in the County
 - The lab is the key to expanded monitoring success
 - USCB's program will benefit all aspects of the MS4 program



Moving Forward – cont.

- Update of the 2006 Beaufort County Stormwater Management Plan
 - On-lot Volume Control and MS4 have changed the direction of stormwater management in the County
 - Revisiting our capital needs will set the course for the Utility going forward





BEAUFORT COUNTY STORMWATER UTILITY
120 Shanklin Road
Beaufort, South Carolina 29906
Voice (843) 255-2801 Facsimile (843) 255-9478



TO: Councilman Gerald Dawson, Chairman, Public Facilities Committee

FROM: Robert McFee, PE, Division Director for Engineering and Infrastructure
Eric W. Larson, Beaufort County Stormwater Utility

SUBJECT: Discussion of a Policy for Acquisition of Storm Water Drainage Easements.

Date: August 6, 2014

JRM/ree

Eric W. Larson

BACKGROUND: The following Standard Operating Procedure is recommended for all drainage easement acquisitions:

- 1) Stormwater Engineer, assisted by Easement Manager, determines easement needs; the easement acquisition process is initiated
 - a) identification of adjacent property owners (names and mailing addresses)
 - b) preparation of easement request letters
 - c) drafting of easement deeds or easement agreements
 - d) initial request letter is mailed
 - e) second request letter, if necessary, is mailed
 - f) if all the easement requests are granted, Easement manager records the documents and the drainage project proceeds
 - g) if the requested easement is not granted, County Staff attorney reports the same to Public Facilities Committee/County Council and recommends one of two courses of action
 - 1) Council designates the drainage as private and removes it from the drainage maintenance inventory; property owners are notified of this action by mail
 - 2) Council agrees to provide funding for the condemnation of the easement; drainage project proceeds when County takes title to the condemned easement
- 2) Stormwater department conducts/oversees the contract letting process
- 3) Contract is awarded
- 4) Construction phase commences

FOR ACTION: Public Facilities Committee meeting occurring on August 18, 2014.

RECOMMENDATION: Staff recommends the above process to be endorsed by the Public Facilities Committee of County Council for the acquisition of drainage easements and maintenance of the stormwater system.

CC: Gary Kubic, County Administrator
Bryan Hill, Deputy Administrator

gh
ybh

/ewl



COUNTY COUNCIL OF BEAUFORT COUNTY

PURCHASING DEPARTMENT

106 Industrial Village Road, Building 2

Post Office Drawer 1228

Beaufort, South Carolina 29901-1228

TO: Councilman Gerald Dawson, Chairman, Public Facilities Committee

FROM: Dave Thomas, CPPO, Purchasing Director *DT*

SUBJ: RFP # 07112014 Request for Proposal to Provide Engineering and Consulting Services for Beaufort County Stormwater Management

DATE: August 18, 2014

BACKGROUND: Beaufort County Purchasing Department issued a Request for Proposal (RFP) for engineering and consulting services for Beaufort County Stormwater Management to assist with the department's programs and projects. The proposal requested that the vendor's consultants oversee, design, develop and/or manage the department's various projects and programs for the term of one year with the option to renew every year for four (4) consecutive years. The Evaluation Committee consisted of five (5) Beaufort County staff members: Audra Antonacci, Codes Enforcement; Charles Atkinson, Building Codes; Amanda Flake, Planning; Gregg Hunt, Mosquito Control; and Eric Larson, Stormwater Management. Beaufort County received six (6) responses to the RFP. They reviewed and evaluated all RFPs, and decided to interview the first three (3) vendors listed below. Applied Technology & Management, Inc. (ATM) was unanimously selected and ranked the number one (1) firm. The committee further recommends that there should be prioritized alternates based on the ranking should contractual negotiations fail. The final ranking is as follows:

1. Applied Technology & Management, Okatie, SC
2. Woolpert, Inc., Charleston, SC
3. AMEC Environmental & Infrastructure, Inc., Columbia, SC
4. Thomas & Hutton, Savannah, GA
5. URS Corporation, N. Charleston, SC
6. Bowman Consulting Group, Ltd., Chantilly, VA

The initial one (1) year term is effective September 1, 2014 to August 31, 2015. Contract fees for each Stormwater project will be negotiated with Applied Technology & Management, Inc. (ATM), and brought back to the appropriate Council Committee and County Council for approval as appropriate. Should negotiations fail due to budget and scheduling issues with Applied Technology & Management, Inc. (ATM), County staff requests to proceed with the second ranked firm.

FUNDING: Primary Funding - 50250011-51160, Stormwater Utility Fund, Professional Services

PROPOSED YEARLY COST: \$50,000

FOR ACTION: Public Facilities Committee meeting August 18, 2014.

RECOMMENDATION: The Purchasing Department recommends that the Public Facilities Committee approve the contract award to Applied Technology & Management, Inc. (ATM), for engineering and consulting services for Beaufort County's Stormwater Management programs and projects.

CC: Gary Kubic, County Administrator
Bryan Hill, Deputy Administrator *BH*
Alicia Holland, Chief Financial Officer *AH*
Robert McFee, Director of Engineering and Infrastructure *RM*
Eric W. Larson, Stormwater Manager *EL*

Att: RFP Scoring Spreadsheets

Sanjour MPSE recall test
 Proposed 07/1/2014
 Summary of individual ratings of progress

Criteria	Possible Points	AMEC					RTM					Invision					Pony					T&B					LWS					Shogren				
		Average	At Home	Flite	Host	Larson	Anderson	At Home	Flite	Host	Larson	Anderson	At Home	Flite	Host	Larson	Anderson	At Home	Flite	Host	Larson	Anderson	At Home	Flite	Host	Larson	Anderson	At Home	Flite	Host	Larson					
1. Experience with implementation of MPSE program elements for Municipal Client	25	23	12	24	15	15	23	20	24	25	20	20	5	20	14	16	16	0	20	13	10	20	5	20	18	10	10	25	18	25	18	25				
2. Documented experience with Water Quality CIP and compliance with the management elements both regulatory and internal	20	19	12	19	15	18	11	10	19	20	18	17	10	18	15	15	19	10	19	18	16	17	10	17	18	15	17	15	17	15	18					
3. Subject matter knowledge of subject of this report	15	19	8	14	10	12	16	5	15	15	15	11	5	14	10	0	15	0	14	15	12	11	5	11	14	0	12	11	17	10	12					
4. Demonstrated ability to facilitate collaborative efforts between independent business divisions	15	11	11	15	15	5	15	10	15	15	15	11	5	10	12	0	15	5	15	15	12	11	5	11	14	2	11	12	14	10	12					
5. Demonstrated knowledge of federal, state and local environmental regulations	15	15	10	15	15	15	15	10	15	15	15	11	10	15	15	10	12	10	15	15	0	15	10	14	15	12	15	11	15	15	15					
6. Working knowledge of computer based data management systems for MPSE compliance and infrastructure management	10	7	5	10	10	10	10	6	10	10	4	0	5	10	5	0	0	0	10	10	2	9	5	10	10	4	10	0	10	5	0					
Total points	100	90	60	97	70	75	51	44	100	71	43	10	91	75	51	43	10	91	71	61	83	40	87	60	81	92	75	93	70	70						
																															422					



COUNTY COUNCIL OF BEAUFORT COUNTY
BEAUFORT COUNTY ENGINEERING DIVISION
104 Industrial Village Road, Building #3, 29906
Post Office Drawer 1228, Beaufort, SC 29901-1228
Telephone: 843-255-2700 Facsimile: 843-255-9420

TO: Councilman Gerald Dawson, Chairman, Public Facilities Committee

VIA: Gary Kubic, County Administrator
Bryan Hill, Deputy County Administrator
Alicia Holland, Chief Financial Officer
Monica Spells, Compliance Officer
Dave Thomas, Purchasing Director *at Spells*

FROM: Robert McFee, Director of Engineering and Infrastructure *JR McFee*

SUBJ: **BUCKWALTER REGIONAL PARK COMMUNITY CENTER PHASE 2 EXPANSION
DESIGN BUILD PROJECT RFP #112113**

DATE: August 8, 2014

BACKGROUND. Beaufort County issued a Request for Proposals for qualified firms to design and build the Phase 2 Expansion of the Buckwalter Regional Park Community Center. Phase 2 consist of a double Gymnasium with 2-full Basketball Courts with a sky track, a Weight Room, 2-Racquetball Courts, 2-Multipurpose Rooms, 2- Indoor Batting Cages, Equipment/Support Areas, and common area to provide connectivity and circulation. There will also be minor upgrades/renovations to the existing facility.

The following firms responded and provided proposals for the project on January 9, 2014.

<u>PROPOSER</u>	<u>LOCATION</u>	<u>AMOUNT</u>
Mashburn Construction /Clancy Wells Architecture	Charleston, SC	\$5,550,000
BES, Inc.	Beaufort, SC	\$4,786,862

A selection committee consisting of the CIP Manager, Construction Manager, Facilities Director, PALS Director, and PALS Deputy Director reviewed, evaluated and ranked the proposals using established criteria focused on the "best value offered". As a result of the interviews, Mashburn Construction/Clancy Wells Architecture team was selected as the proposer providing the best understanding and value for the design and construction of Phase 2. The Mashburn/Clancy Wells team designed and built Phase 1 of the Buckwalter Community Center in 2008/2009. This team's proposal was also reviewed for compliance with the County's Small & Minority Business Subcontractor Guidelines and it has been determined that they made a "Good Faith Effort" and are in compliance with respect to Beaufort County's requirements. On the basis of the qualification of the firm and the value offered, the selection committee recommends award of a design/build contract to Mashburn Construction/Clancy Wells Architecture for the Buckwalter Regional Park Community Center Phase 2 Expansion Design Build Project.

FUNDING. Staff is requesting a contingency of 10% (\$550,000.00) of the total bid price. The project will be funded by the 2015 CIP Program with a budget of \$5,000,000 and Bluffton PALS Impact Fees with a current balance of \$2,247,118. The total project budget for design and construction is \$6,100,000.

ACTION. Public Facilities Committee Meeting on August 18, 2014.

RECOMMENDATION. The Public Facilities Committee approve and recommend to County Council approval of a contract award to Mashburn Construction Company, Inc., to design and build the Phase 2 Expansion of the Buckwalter Regional Park Community Center for a total contract amount of \$5,550,000. Additionally, approve and recommend to County Council a project design and construction budget of \$6,100,000 which includes a 10% contingency.

JRM/DC/mjh

Attachments: 1) Phase 2 Building Plan
2) SMBE Documents

cc: Scott Marshall
rfv/BWC/am/Ctr/Ph2/Design/Build

2014-08-15 16:38:44

1/4

SKMBT_C45214081316460 - annotated - flattened.pdf (#14)

Small and Minority Business Bid Compliance Review of Good Faith Efforts (1 of 2)
 Buckwalter Community Center Phase II Expansion – RFP #112113

Prime Bidder/Proposer		BES	Mashburn
1	Included Good Faith Efforts Checklist Form	1	1
2	Requested Beaufort County SMBE Vendor List	1	1
3	Included Copy of Written Notice to SMBE	1	1
4	Provided Proof of Sending Written Notice to SMBE	1	1
5	Sent Bid Notice to SMBE 10 Days in Advance	1	1
6	Included Copy of Written Notice to Good Faith Agencies	1	1
7	Provided Proof of Sending Written Notice to Good Faith Agencies	1	1
8	Signed Non-Discrimination Statement Form (Exhibit 1)	1	1
9	Included Outreach Documentation Log (Exhibit 2)	1	1
10	Included Proposed Utilization Plan (Exhibit 3)	1	1
Total		10	10

Beaufort Engineering Services, Inc. (Beaufort, SC)
 Mashburn Construction (Charleston, SC)

Total of 10 Possible Points

Scoring:
 0 = No
 1 = Yes



Prepared by Monica Spalls, Compliance Officer
 July 23, 2014

Small and Minority Business Bid Compliance Review of Good Faith Efforts (2 of 2)
Buckwalter Community Center Phase II Expansion – RFP #112113

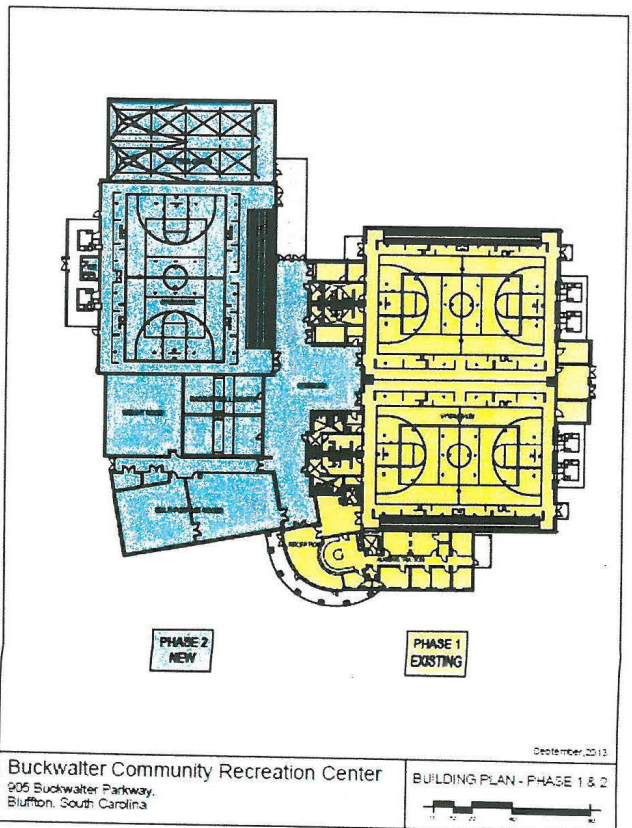
Prime Bidder/Proposer	Proposed Local SMBE Firm Name	Type	Location	Scope
Beaufort Engineering Services Beaufort, SC	BES Services, LLC	WBE	Bluffton, SC	A/E Services
Mashburn Construction Charleston, SC	3-Way Electric, LLC	SBE	Bluffton, SC	Electrical
	Heritage Pest Control, Inc.	SBE	Hilton Head Island, SC	Termite Treatment
	Professional Landscape, LLC	SBE	Bluffton, SC	Landscaping
	Pender Brothers, Inc.	SBE	Port Royal, SC	Plumbing

Note: This solicitation sought proposals only and did not involve actual quotes from potential subcontractors

MBE = Minority Business Enterprise
SBE = Small Business Enterprise
WBE = Woman Business Enterprise



Prepared by Monica Spella, Compliance Officer
July 23, 2014



2014-08-15 16:38:45

4/4

SKMBT_C45214081316460 - annotated - flattened.pdf (4/4)



COUNTY COUNCIL OF BEAUFORT COUNTY
BEAUFORT COUNTY ENGINEERING DEPARTMENT
104 Industrial Village Road, Building #3, Beaufort, SC 29906
Post Office Drawer 1228, Beaufort, SC 29901-1228
Telephone: 843-255-2700 Facsimile: 843-255-9420

TO: Councilman Gerald Dawson, Chairman, Public Facilities Committee

VIA: Gary Kubic, County Administrator
Bryan Hill, Deputy County Administrator *BH*
Alicia Holland, Chief Financial Officer *AH*
Dave Thomas, Purchasing Director *DT*
Monica Spells, Compliance Officer *Spells*

FROM: Robert McFee, Director of Engineering and Infrastructure *Robert McFee*

SUBJ: **CONTRACT AWARD FOR VESTIBULE IMPROVEMENTS AT BURTON WELLS REC CENTER
IFB #052314**

DATE: July 16, 2014

BACKGROUND. On June 26, 2014, Beaufort County received bids from two firms for vestibule improvements at the Burton Wells Regional Park Recreation Center. The scope of the improvements include creation of a service window, reconfigured lobby area to provide access control, access control system, ADA door operators, security system improvements, and office remodeling. Listed below are the bids received from the two contractors:

<u>Contractors</u>	<u>Total Bid</u>
Patterson Construction Company, Beaufort SC	\$ 71,588.71
Beaufort Design Build Company, Beaufort, SC	\$ 84,999.00

Patterson Construction was the certified lowest responsible/responsive bidder and is in compliance with the County's SMB Participation Ordinance. An analysis of their bid prices revealed no apparent cause for rejecting their bid.

Additional project cost for security (\$2,500) and access controls thru state contract (\$91,025.69) are not included in the bid total. This will add an additional \$93,525.69 to the project budget. Staff is requesting a contingency of 10% (\$16,511.44) of the total bid price plus security and access control cost be added to the total project budget. The total project budget is \$181,625.84

FUNDING. PALS Other Improvements Acct # 10001606-54450 with a current balance of \$185,000.

ACTION. Public Facilities Committee Meeting on August 18, 2014.

RECOMMENDATION. The Public Facilities Committee approve and recommend to County Council a contract award to Patterson Construction Company in the amount of \$71,588.71 for Burton Wells Recreation Center vestibule improvements, a contract award to Encore Technology group via State Contract in the amount of \$91,025.69 for an access control system and door operators, and a budget of \$2,500.00 for security improvements. Additionally, recommend approval of a 10% project contingency and a total project budget of \$181,625.84.

JRM/DC/mjh

Attachments: 1) Bid Certification
2) SDBE Documents
3) Quote for Access Control

Cc: Scott Marshall
Dan Morgan

PRELIMINARY BID TABULATION
PURCHASING DEPARTMENT



Project Name:	Burton Wells Vestibule Improvements
Project Number:	IFB #052314
Project Budget:	
Bid Opening Date:	June 26, 2014
Time:	3:00 PM
Location:	Building #2 104 Industrial Village Rd, Beaufort, SC
Bid Administrator:	Dave Thomas, Beaufort County Purchasing Director
Bid Recorder:	David Coleman, County CIP Manager

The following bids were received for the above referenced project

BIDDER	BID FORM	BID BOND	ALL ADDENDA	SCH OF VALUES	SUB LISTING	SMBE DOCS	BID GRAND TOTAL
Beaufort Design Build	x	x	x	NA			\$84,999.00
Patterson Const	x	x	x	NA			\$71,588.71

Beaufort County posts PRELIMINARY bid tabulation information within 2 business days of the advertised bid opening. Information on the PRELIMINARY bid tabulation is posted as it was read during the bid opening. Beaufort County makes no guarantee as to the accuracy of any information on the PRELIMINARY tabulation. The bid results indicated here do not necessarily represent the final compliance review by Beaufort County and are subject to change. After the review, the final award will be made by Beaufort County Council and a certified bid tab will be posted online.


Bid Administrator Signature


Bid Recorder Signature


Bid Certification Signature

Small and Minority Business Program Compliance Review of Good Faith Efforts (1 of 1)

Burton Wells Recreational Park Vestibule Improvements Project • IFB # 052314 • Bids Due June 26, 2014 (revised from May 23, 2014)

	Prime Proposer	Beaufort *	Patterson *
1	Included Good Faith Efforts Checklist Form	n/a	n/a
2	Requested SMBE List from Compliance Office	n/a	n/a
3	Included Copy of Written Notice to SMBE	n/a	n/a
4	Provided Proof of Sending Written Notice to SMBE	n/a	n/a
5	Sent Bid Notice to SMBE 10 Days in Advance	n/a	n/a
6	Included Copy of Written Notice to Good Faith Agencies	n/a	n/a
7	Provided Proof of Sending Written Notice to Good Faith Agencies	n/a	n/a
8	Signed Non-Discrimination Statement Form (Exhibit 1)	n/a	n/a
9	Included Outreach Documentation Log (Exhibit 2)	n/a	n/a
10	Included Proposed Utilization Plan (Exhibit 3)	n/a	n/a
	Total	n/a	n/a

Bidders:

Beaufort Design Build, LLC
Beaufort, SC

Patterson Construction, Inc.
Beaufort, SC

* The bidder will self-perform the project, so good faith efforts documentation does not apply.

Total of 10 Possible Points

Scoring:

0 = No

1 = Yes



Prepared by Monica Spells, Compliance Officer
July 7, 2014



Burton Wells

Encore Technology Group, LLC
 2000 Wade Hampton Blvd Suite 210
 Greenville, SC 29615
 (888) 983-6267
 www.encoretg.com

006569
 Version: 1

Prepared For
 Beaufort County Government
 Andrew Dalkos
 100 Ribaut Rd. PO Drawer 1228
 Beaufort, SC 29901
 Andrewd@bcgov.net
 8432557008

Prepared By
 Tony Gallman
 Phone: 888-983-6267
 Email: tgallman@encoretg.com

Hardware		Price	Qty	Extended
CPS-UCS-2RU-K9	Cisco Enterprise class server in a two-rack unit form factor with dual Intel Xeon E5-2600 series processor family CPUs that deliver significant performance and efficiency. Support 12 3.5-inch drives for storage. NO drives and NO options cards available	\$7,440.00	1	\$7,440.00
CPS-HDD2T12F213	Hard Drives for UCS Server	\$719.40	12	\$8,632.80
CIVS-IPC-3520 (Config)	Cisco Video Surveillance IP Dome Body, Indoor, 1MP DN, IO	\$765.00	7	\$5,355.00
CIVS-6KA-FLSHMNT	Indoor Flush Mount Housing for 3520 and 6020 IP Cameras	\$36.00	7	\$252.00
CIVS-6KA-FLSHD-S=	Indoor Smoked Flush Dome for 3520 and 6020 IP Cameras	\$24.00	7	\$168.00
CIVS-6KA-CTMFLSH=	Ceiling Tile Flush Mount for 3520/6020 IP Cameras	\$33.00	7	\$231.00
CON-SNT-CIVSIPC3	SMARTNET 8x5xNBD CSC Video Srvlnce IP Dome Body, Ind 1MP	\$80.10	7	\$560.70
CIVS-IPC-6020 (Config)	Cisco Video Surveillance IP Camera, Indoor HD Dome Body	\$1,005.00	4	\$4,020.00
CIVS-6KA-VRD-S	Smoked Vandal Resistant Dome for 35xx, 6k, 7k IP Domes	\$45.00	3	\$135.00
CIVS-6KA-FLSHD-S	Indoor Smoked Flush Dome for 3520 and 6020 IP Cameras	\$24.00	1	\$24.00
CIVS-6KA-GNECK=	Goose Neck Mount for 35xx, 6k, and 7030 IP Domes	\$90.00	3	\$270.00
CIVS-6KA-VRCNDBS	VR Conduit Base for 3520 and 6020 IP Domes	\$60.00	4	\$240.00
CIVS-6KA-CTMFLSH=	Ceiling Tile Flush Mount for 3520/6020 IP Cameras	\$33.00	1	\$33.00
CON-SNT-CIVSIPC6	SMARTNET 8x5xNBD Cisco Video Surveill.	\$54.00	4	\$216.00
CIVS-IPC-6400 (Config)	Cisco Video Surveillance IP Camera, HD Bullet Camera	\$1,155.00	1	\$1,155.00
CON-SNT-CIV6400	SMARTNET 8x5xNBD Cisco Video Surveillance 6400 Camera	\$121.50	1	\$121.50



Burton Wells

Encore Technology Group, LLC
 2000 Wade Hampton Blvd Suite 210
 Greenville, SC 29615
 (888) 983-6267
 www.encoretg.com

006569
 Version: 1

Hardware		Price	Qty	Extended
CIVS-IPC-7030 (Config)	Cisco Video Surveillance 5MP IP Outdoor Dome Camera	\$1,215.00	2	\$2,430.00
CIVS-6KA-VRD-C	Clear Vandal Resistant Dome for 35xx, 6k, 7k IP Domes	\$45.00	2	\$90.00
CIVS-6KA-VRCNDBS	VR Conduit Base for 3520 and 6020 IP Domes	\$60.00	2	\$120.00
CIVS-6KA-GNECK=	Goose Neck Mount for 35xx, 6k, and 7030 IP Domes	\$90.00	2	\$180.00
CON-SNT-CIVSIPC7	SMARTNET 8x5xNBD CSC Video Srvlnce 5MP IP	\$127.80	2	\$255.60
CIAC-GW-K9	Cisco Physical Access Gateway	\$570.00	1	\$570.00
CIAC-GW-RDR	Cisco Physical Access Reader Module	\$390.00	7	\$2,730.00
CON-SNT-GWK9	SMARTNET 8X5XNBD Cisco Physical Access	\$68.40	1	\$68.40
HU-6005BKB00	PROX POINT PLUS READER BLACK	\$111.41	11	\$1,225.51
RU-832028	MAG LOCK-DOUBLE-1500LBS	\$661.41	2	\$1,322.82
RCI-F2164	F2 Series Fire Rated Offset and Centerline Latch Entry	\$320.00	5	\$1,600.00
BOS-DS160	Door Request PIR Sensor, with timer	\$77.14	2	\$154.28
SN-EEB3N	EMERY EXIT BTN NRW STL 30 SEC	\$107.13	2	\$214.26
GES-1078CWM	Magnetic Door Position Switch -Brown	\$8.79	1	\$8.79
RCI-0162	0162 Rim Strike 1-3/4 x 9-3/4 Standard Finish 32D	\$304.29	4	\$1,217.16
RU-DE8310CS8	DE8310CS C/W CAM & SOUNDER X28	\$1,205.70	2	\$2,411.40
RU-SA158	8310 5/8" SPLIT ARMATURE KIT	\$53.57	2	\$107.14
RU-FB0528	8310 FILLER BAR X 28	\$25.00	2	\$50.00
RU-CMB108	8310 CONDUIT MTG BRACKET X 28	\$49.29	2	\$98.58
2227 - MAT	Cat 6 Cable AND Bannana Style cable for devices	\$897.00	1	\$897.00
2227 - MISC	Miscellaneous mounting accessories, conduit, Ty Wraps, Screws, Gateway Box, etc.	\$650.00	1	\$650.00
Door Hardware	Door Hardware for main entry, lobby entry, main exit, lobby exit and two (2) lobby center doors per the hardware listed in attached Statement of Work.	\$21,413.10	1	\$21,413.10
Hardware Subtotal				\$66,668.04

Services		Price	Qty	Extended
Labor-Cable-Bund	Cabling Labor Bundle Cabling Project Labor	\$14,089.98	1	\$14,089.98
Labor-PhySec-Bund	Physical Security Labor Bundle Physical Security Project Labor	\$5,691.67	1	\$5,691.67
Labor - 3rd Party	3rd Party labor/Contracted labor 3rd Party labor/Contracted labor	\$4,576.00	1	\$4,576.00



Burton Wells

006569
Version: 1

Encore Technology Group, LLC
2000 Wade Hampton Blvd Suite 210
Greenville, SC 29615
(888) 983-6267
www.encoretg.com

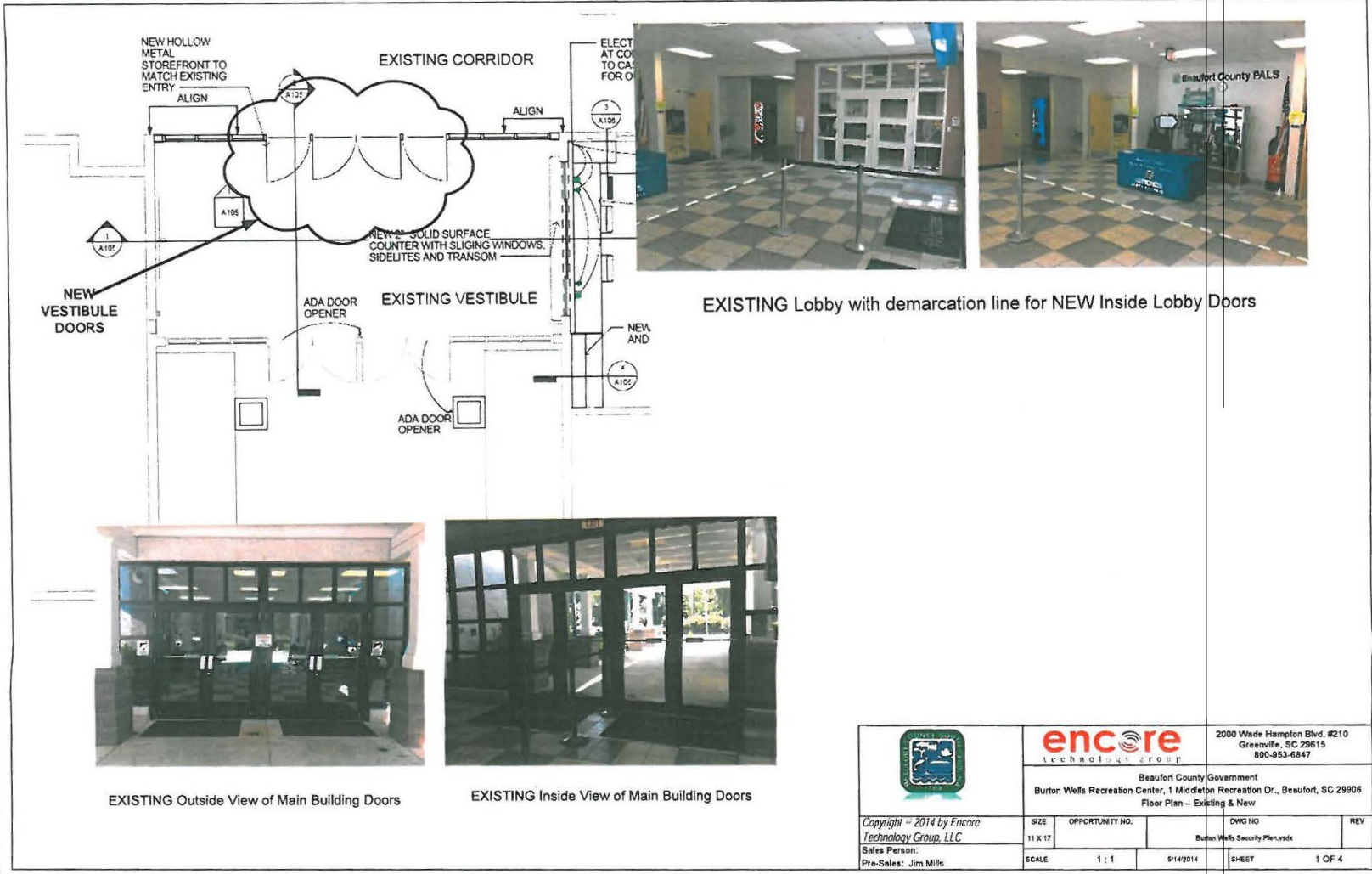
Services	Price	Qty	Extended
*Please add your quote number to your PO.			
Please make the purchase order to: Encore Technology Group LLC 2000 Wade Hampton Blvd. Suite 210 Greenville, SC 29615			
Fax the purchase order to Sheldon Pettigrew 864-990-1176 or email to spettigrew@encoretg.com			
Services Subtotal			\$24,357.65

Recap	Amount
Hardware	\$66,668.04
Services	\$24,357.65
Subtotal	\$91,025.69

Taxes, shipping, handling and other fees may apply. We reserve the right to cancel orders arising from pricing or other errors.

Signature _____

Date _____



EXISTING Lobby with demarcation line for NEW Inside Lobby Doors



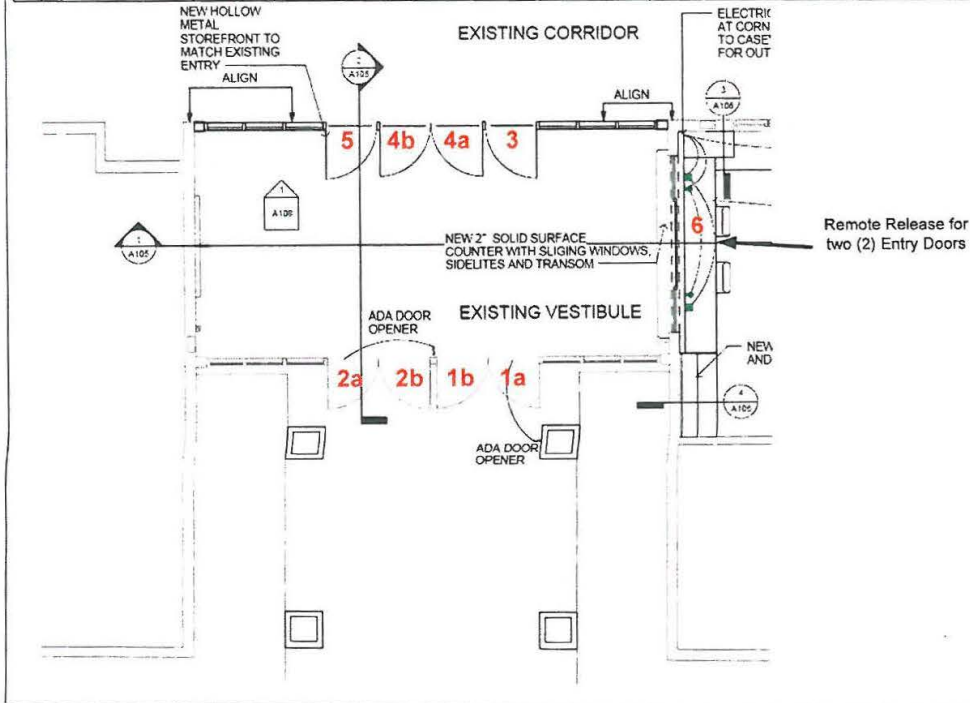
EXISTING Outside View of Main Building Doors




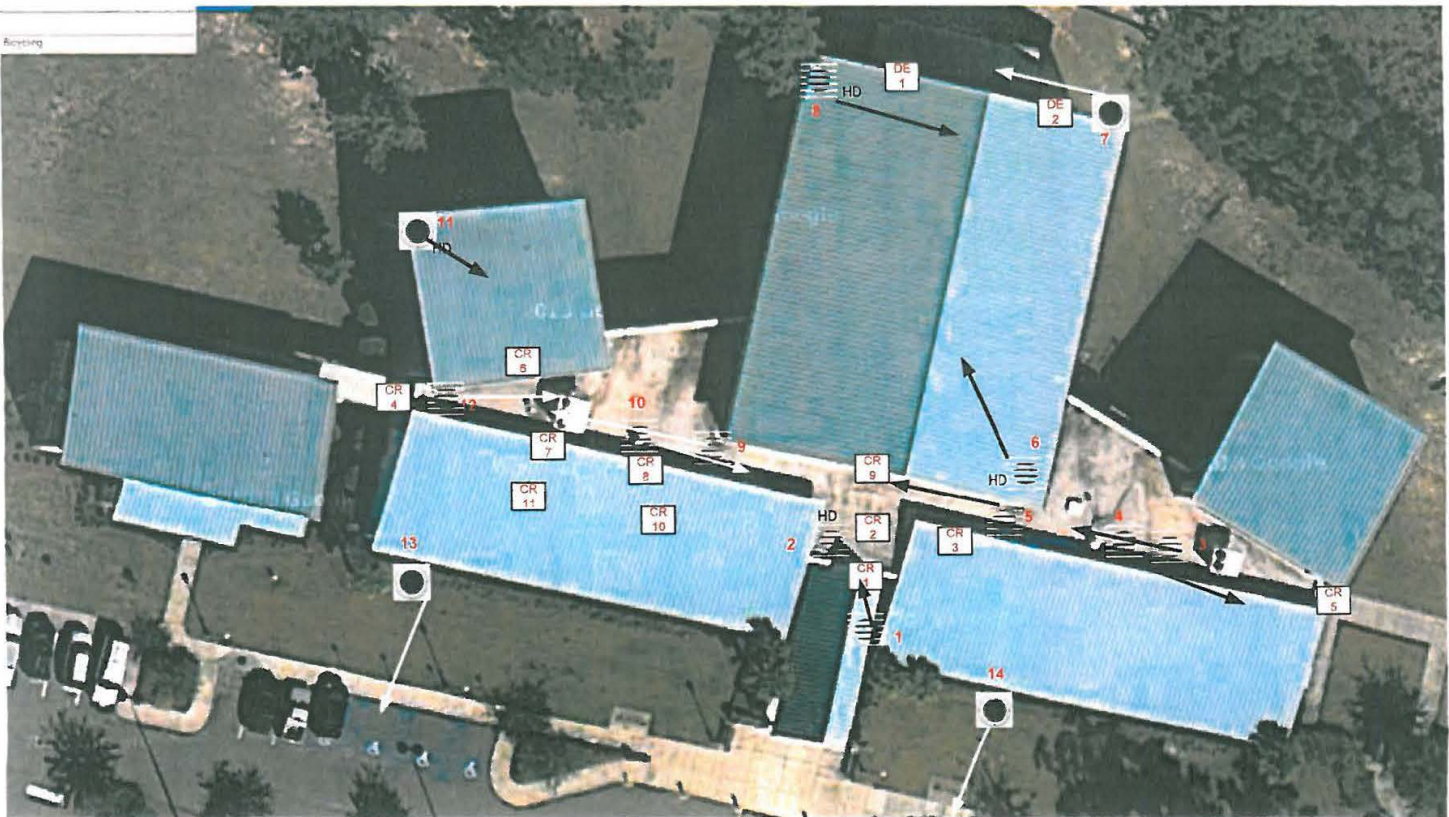
EXISTING Inside View of Main Building Doors

			2000 Wade Hampton Blvd. #210 Greenville, SC 29615 800-953-6647	
	Beaufort County Government Burton Wells Recreation Center, 1 Middleton Recreation Dr., Beaufort, SC 29906 Floor Plan - Existing & New			
Copyright © 2014 by Encore Technology Group, LLC Sales Person: Pre-Sales: Jim Mills	SIZE 11 X 17	OPPORTUNITY NO. SCALE 1 : 1	DWG NO. 5/14/2014	REV SHEET 1 OF 4

Beaufort County Government - Burton Wells Recreation Center - Handicap Operator Matrix															
NO.	Location	Type	Existing	Material	Frame	Fire Alarm	Push Hardware	Trim	Cylinder	Finish	Working Order	Handicap Operator	Push Pad to	Reader	
1a	Main Entry Right (RHR)	Double	YES	Aluminum Glass	Aluminum	YES	Push Bar	Pull Handle	Deadbolt	625	YES	YES	IN	YES	
1b	Main Entry Right (LHR)	Double	YES	Aluminum Glass	Aluminum	YES	Push Bar	Pull Handle	None	625	YES	NO	NO	NO	
2a	Main Exit Left (RHR)	Double	YES	Aluminum Glass	Aluminum	YES	Push Bar	Pull Handle	Deadbolt	625	YES	NO	NO	NO	
2b	Main Exit Left (LHR)	Double	YES	Aluminum Glass	Aluminum	YES	Push Bar	Pull Handle	None	625	YES	YES	OUT	NO	
3	New Lobby Right (RHR)	Single	NO	Hollow Metal	Hollow Metal	YES	RM	Push Trim	NEW	625	NEW	YES	IN	YES	
4a	New Lobby Center (RHR)	Double	NO	Hollow Metal	Hollow Metal	YES	RM	Exit Only NO Trim	NEW	625	NEW	NO	NO	NO	
4b	New Lobby Center (LHR)	Double	NO	Hollow Metal	Hollow Metal	YES	RM	Exit Only NO Trim	NEW	625	NEW	NO	NO	NO	
5	New Lobby Left (LHR)	Single	NO	Hollow Metal	Hollow Metal	YES	RM	Exit Only NO Trim	NEW	625	NEW	YES	OUT	NO	



	encore TECHNOLOGY GROUP 2000 Wade Hampton Blvd. #210 Greenville, SC 29615 800-953-6847		
	Beaufort County Government Burton Wells Recreation Center, 1 Middleton Recreation Dr., Beaufort, SC 29906 Lobby Device Layout		
Copyright © 2014 by Encore Technology Group, LLC Sales Person: Tony Gallman Pre-Sales: Jim Mills	SIZE 11 X 17	OPPORTUNITY NO. 5/14/2014	DWG NO. Burton Wells Security Plan.indx SHEET 2 OF 4



encore
technology group

2000 Wade Hampton Blvd. #210
Greenville, SC 29615
800-953-6847

Beaufort County Government
Burton Wells Recreation Center, 1 Middleton Recreation Dr., Beaufort, SC 29906
Building Aerial View

Copyright © 2014 by Encore
Technology Group, LLC
Sales Person: Tony Gallman
Pre-Sales: Jim Mills

SIZE	OPPORTUNITY NO.	DWG NO	REV
11 X 17		Burton Wells Security Plan.sdx	
SCALE		SHEET	
1 : 1	5/14/2014	3 OF 4	



COUNTY COUNCIL OF BEAUFORT COUNTY
PURCHASING DEPARTMENT
106 Industrial Village Road, Building 2
Post Office Drawer 1228
Beaufort, South Carolina 29901-1228

TO: Councilman Gerald Dawson, Chairman, Public Facilities Committee
FROM: Dave Thomas, CPPO, Purchasing Director *AT*
SUBJ: CONTRACT AWARD RECOMMENDATION FOR THE BEAUFORT COUNTY
GOVERNMENT COMPLEX PARKING LOT STORM WATER RETROFIT PROJECT
DATE: August 15, 2014

BACKGROUND: The project provides a highly visible location to create a stormwater demonstration venue illustrating the use of best management practices (BMP) required in the Beaufort County Stormwater Manual to significantly improve the water quality in our local marshes and estuaries. The project involves the installation of 18,072 square feet of permeable clay pavers and 3,152 square feet of rain gardens along with the associated infrastructure including curbs, landscape, and irrigation.

Beaufort County advertised for bid submittals on this project on two previous occasions. In November 2012, the County prequalified contractors for the project and then requested that the prequalified contractors submit bid proposals. None of the prequalified contractors responded. In April 2014, the County advertised for bids again and for a second time did not receive any responses. In July 2014, the County requested quotes from five (5) contractors and on August 7, 2014 Beaufort County received the following quotes for the referenced project.

<u>Contractors</u>	<u>Total Quote</u>
Lane Construction, Beaufort, SC	\$ 292,989
JS Construction, Bluffton, SC	\$ 299,653
JoCo Construction, Beaufort, SC	\$ 299,807
Cleland Site Prep, Inc., Ridgeland, SC	\$ 339,794
JH Heirs Construction, Walterboro, SC	\$ 366,363

Due to the critical nature of permeable paver construction, the specifications clearly stated that contractors must include relevant project experience including the installation of this type of paver system. Lane Construction did not provide project references meeting this criterion and was therefore rejected. JS Construction provided the lowest responsible/responsive quote and a notarized 100% self-performance affidavit in compliance with the County's SMB Participation Ordinance. An analysis of their quote prices revealed no apparent cause for rejecting their bid. The other four (4) contractors demonstrated good faith outreach efforts for SMB participation.

FUNDING: Primary Funding – 50260011-51160, Stormwater Capital Improvement Fund. The budget for this project has a current balance of \$326,518.

FOR ACTION: Public Facilities Committee meeting August 18, 2014.

RECOMMENDATION: The Public Facilities Committee approve and recommend to County Council an award to JS Construction, Bluffton, SC in the amount of \$299,653 for the County Government Complex Parking Lot Storm Water Retrofit.

CC: Gary Kubic, County Administrator
Bryan Hill, Deputy County Administrator *BH*
Alicia Holland, Chief Financial Officer *AH*
Joshua Gruber, County Attorney *JG*
Robert McFee, Director of Engineering and Infrastructure *RM*
Eric Larson, Stormwater Manager *EL*
Monica Spells, Compliance Officer *Spells*

Robert McFee
Eric Larson



47 Telfair Place
 Savannah, GA 31415
 TELE: 912-443-3416
 FAX: 912-443-3401

PROPOSAL & CONTRACT

**Beaufort County Engineering
 Don Smith**

RE: Malphrus Road & 5A Retrofit

8/1/14

Preferred Materials, Inc. offers to furnish all labor, materials, and equipment required for the performance of the following described work in connection with the asphalt construction for Malphrus Road & 5A Intersection Retrofit

ITEM#	DESCRIPTION	QUANT	UNIT	U.PRICE	AMOUNT
10	Minimizing the high point	1	LS	\$59,730.00	\$59,730.00

NOTES:

1. Unless "Lump Sum" or "LS" appears next to an item of work, it is understood and agreed that the quantities referred to above are estimates only and that payment shall be made at the stated unit prices for actual quantities of work performed by PMI. PMI cannot guarantee drainage on areas less than 1% grade. This proposal expires thirty (30) days from the effective date of this Proposal.
2. PMI shall have no obligation to perform in increments, quantities, or portions of the work that PMI plans to perform in a single operation; nor shall PMI have any obligation to perform work in a different sequence than planned.
3. The contract completion time is August 31st, 2014. After this date PMI reserves the right to adjust any and all of the above prices.
4. The above price is predicated on information provided by Beaufort County dated 7/23/14. Mill 6" of existing pavement approx. 735 SYDS and replace with 6" of HMA TP C.
5. Mobilization price includes (1) move-in to project. Any additional move-ins will be \$2,500.00 per each.
6. No retain-age is to be withheld.
7. Contractor shall be entitled to an equitable increase in compensation resulting from delay or other impairment to work caused by the Owner, or third party.
8. All invoices shall be paid within 30 days of issuance.
9. **Pricing excludes** any permits, fees, permanent roadway signs, as-built, adjustment or relocation of utilities, and traffic signal loops.
10. Striping will be replaced only if damaged by construction of the retrofit.
11. Beaufort County is to provide a full time Police Officer to assist in handling traffic at no cost to PMI.

12. Pricing based on performing work during daytime operational hours and in accordance with PMI's normal operational schedule.

Thanks for the opportunity and good luck with the project

ACCEPTED:

Contractor Name.

**Grant Peterson
Preferred Materials, Inc.**

Cleland Site Prep, Inc
 PO Box 3822
 Bluffton, SC 29910

Proposal
 November 22, 2013

Mr. Don Smith
 Beaufort County Engineering

Intersection Improvements for Malphrus Road and Bluffton Parkway

We propose to furnish all the necessary mobilization, supervision, labor, and equipment required to complete the following work as outlined below, subject to terms and conditions stated below and incorporated as part of this proposal.

	QTY		UNIT \$			TOTAL
Project Manager	10	Hr	\$	75.00	/	Hr \$ 750.00
Supervision	15	Hr	\$	65.00	/	Hr \$ 975.00
Traffic control - Rentals (Quote Attached)	1	Ls	\$	31,102.00	/	Ls \$ 31,102.00
Traffic Control - Labor for Set up / Take down	1	Ls	\$	3,500.00	/	Ls \$ 3,500.00
Milling and Paving (Quote Attached)	1	Ls	\$	45,714.90	/	Ls \$ 45,714.90
Clean up	1	Ls	\$	1,500.00	/	Ls \$ 1,500.00
TOTAL						\$ 81,816.90

PROPOSAL BASED UPON ESTIMATED QUANTITIES. FINAL BILL WILL BE BASED UPON FINAL FIELD MEASUREMENTS.

Terms of payment: Net due 10 days date of invoice.

No conditions, verbal or otherwise, that are not incorporated on this agreement will be recognized.

This quotation expires thirty (30) days from date hereof, but may be effective at any time, if, after acceptance by you, it is approved by us and signed.

By: 
 Logan Crowther
 Vice - President

Date: 11/22/13

Accepted: _____

Date: _____

ORDINANCE NO. _____

AN ORDINANCE ESTABLISHING, DEVELOPING AND CONSTRUCTING MULTI-USE RECREATION TRAILS AND RESTRICTING THE USE THEREOF TO NON-MOTORIZED ACTIVITIES

WHEREAS, Beaufort County, South Carolina is establishing, developing and constructing multi – use recreational trails; and

WHEREAS, these multi – use trails are for the intended use of non-motorized activities such as walking, jogging, inline skating, roller blading, skate boarding and bicycling; and

WHEREAS, in order to provide for the safe use of these trails, it is necessary to adopt an ordinance regulating the use of same; and

WHEREAS, Beaufort County Council believes to best provide for the health, safety, and welfare of its citizens it is appropriate to amend Part II, Chapter 90 of the Beaufort County Code of Ordinances by adding Article V thereto and to provide for additional terms to said Article; and

WHEREAS, all text that is underscored shall be added text;

NOW, THEREFORE, BE IT ORDAINED BY BEAUFORT COUNTY COUNCIL, that Article V of the Beaufort County Code is hereby amended as follows:

Sec. 90-100. Purpose

The Beaufort County Council recognizes that the multi-use recreational trails in Beaufort County, South Carolina are for the use and enjoyment of its citizens and that it is in the public’s interest that laws be promulgated to protect the safety and welfare of its patrons while using these trails.

Sec. 90-101. Definitions

Multi – use trail means any trail or path designated by County Council to be used for pleasure or as an alternative mode of transportation for use by walking, jogging, inline skating, roller blading, skate boarding, bicycling, and other non-motorized recreation.

Sec. 90-102 Prohibitions

(1) Vehicles. No person shall operate a motorized vehicle of any kind or nature over, through, across or upon the multi-use trail, provided that county vehicles operated while cleaning or working on the trail and law enforcement and emergency vehicles shall be exempt from the application of this section.

- (2) Hours of Use. No person shall be allowed access to or use a multi – use recreational trail from one hour after sunset to one hour before sunrise unless specially authorized by the Beaufort County Council.
- (3) Alcoholic Beverages. The consumption and possession of alcoholic beverages shall be prohibited on any multi-use recreational trail.
- (4) Litter. Throwing, depositing or causing or permitting to be thrown or deposited any glass, bottle, glassware, can or pieces thereof or any garbage, waste or refuse of any kind on the multi – use trail or the lands adjacent thereto shall be unlawful. All trash or litter shall be placed in designated trash receptacles.
- (5) Animals. No person shall fail to exercise proper care and control of his animal while using the multi – use trail. All animals must be on a leash and properly restrained. All animal refuse shall be placed in designated trash receptacles.

Sec. 90-103 Penalties

Any person violating any provision of this article shall be guilty of a misdemeanor and, upon conviction thereof shall pay such penalties as the court may decide, not to exceed \$500.00 or 30 days imprisonment for each violation.

DONE, this ____ day of _____, 2014.

COUNTY COUNCIL OF BEAUFORT COUNTY

By: _____
D. Paul Sommerville, Chairman

APPROVED AS TO FORM:

Joshua A. Gruber, County Attorney

ATTEST:

Suzanne M. Rainey, Clerk to Council

First Reading:
Second Reading:
Public Hearing:
Third and Final Reading:

Bluffton Parkway

5A Flyover

Paint Colors

Presentation for the County's
Public Facilities Committee

August 18, 2014





TO BLUFFTON

STEEL BEAM SECTIONS

US 278

FORDING ISLAND ROAD EXT

TO HILTON HEAD ISLAND

33070	33105	33245	33275	33303
33415	33432	33434	33440	33446
33448	33481	33507	33510	33522
33523	33531	33538	33540	33564
33578	33591	33594	33596	33613
33617	33618	33619	33637	33655
33670	33685	33690	33695	33696
33697	33711	33717	33722	33727
33785	33793	33798	33814	



30032	30040	30045	30049	30051
30055	30059	30061	30062	30070
30075	30076	30080	30091	30095
30097	30099	30100	30108	30109
30111	30110	30117	30118	30122
30129	30140	30145	30152	30160
30166	30206	30217	30219	30227
30233	30252	30257	30260	30266
30277	30279	30313	30315	30318
30324	30371	30372	30400	30450
30475				



36008	36044	36076	36081	36089
36118	36120	36122	36125	36135
36164	36182	36185	36173	36176
36187	36231	36250	36251	36270
36280	36293	36300	36306	36307
36314	36320	36329	36350	36357
36360	36373	36375	36376	36400
36405	36408	36415	36424	36440
36463	36473	36492	36493	36495
36496	36515	36521	36555	36559
36586	36595	36622	36628	36642

34100	34102	34103	Beaufort County Intranet - Home (2) http://bcweb/SitePages/Home.aspx	34110
34115	34120	34127	34128	34130
34136	34140	34151	34155	34159
34173	34177	34190	34193	34201
34223	34226	34227	34230	34233
34241	34255	34257	34258	34259
34260	34272	34277	34300	34325
34373	34410	34414	34417	34424
34432	34441	34449	34466	34491
34504	34516	34518	34524	34525
34533	34540	34552	34554	34558
34583	34585	34664	34666	34670
34672				



35042	35044	35045	35048	35050
35051	35052	35053	35056	35065
35080	35090	35092	35095	35102
35107	35109	35115	35125	35131
35172	35181	35182	35183	35184
35187	35189	35190	35193	35200
35230	35231	35237	35240	35250
35275	35299	35352	35414	35450
35466	35488	35526	35550	35622
35630				

SC 170 at US 278



BEAUFORT 
 **COUNTY**

SC 170 at US 278



BEAUFORT 
 **COUNTY**

US 278 at Cross Island Pkwy



BEAUFORT 
 **COUNTY**

Flyover Rendering

Green 34558



BEAUFORT 
COUNTY

Flyover Rendering

Green 34664



BEAUFORT 
COUNTY

Flyover Rendering

Green 34272



BEAUFORT 
 **COUNTY**

Flyover Rendering

Blue 35550



Flyover Rendering

Blue 35526



BEAUFORT 
 **COUNTY**

Flyover Rendering

Blue 35193



BEAUFORT 
 **COUNTY**

Summary

- **Variety of Steel Beam Colors to Select From**
- **Color Selection Should Conform to Federal Standards**
- **Color Should Blend with Greens and Blues of Area**
- **Dark Colors Fade More Quickly Than Light**

Moving Forward

- **Select From One of Six Presented**
- **Provide Additional Renderings From One of Shade Variations Presented**
- **Other Color Considerations**