

# COUNTY COUNCIL OF BEAUFORT COUNTY

ADMINISTRATION BUILDING  
100 RIBAUT ROAD  
POST OFFICE DRAWER 1228  
BEAUFORT, SOUTH CAROLINA 29901-1228  
TELEPHONE: (843) 255-2180  
FAX: (843) 255-9401  
www.bcgov.net

D. PAUL SOMMERVILLE  
CHAIRMAN

STEWART H. RODMAN  
VICE CHAIRMAN

## COUNCIL MEMBERS

STEVEN M. BAER  
CYNTHIA M. BENSCH  
RICK CAPORALE  
GERALD DAWSON  
BRIAN E. FLEWELLING  
WILLIAM L. MCBRIDE  
GERALD W. STEWART  
ROBERTS "TABOR" VAUX, JR  
LAURA L. VON HARTEN

GARY KUBIC  
COUNTY ADMINISTRATOR

BRYAN J. HILL  
DEPUTY COUNTY ADMINISTRATOR

JOSHUA A. GRUBER  
COUNTY ATTORNEY

SUZANNE M. RAINEY  
CLERK TO COUNCIL

## AGENDA PUBLIC FACILITIES COMMITTEE

Monday, April 15, 2013

4:00 p.m.

Conference Room, Building 2  
Beaufort Industrial Village  
102 Industrial Village Road, Beaufort

### Committee Members:

Gerald Dawson, Chairman  
Steven Baer, Vice Chairman  
Cynthia Bensch  
Rick Caporale  
Brian Flewelling  
William McBride  
Jerry Stewart

### Staff Support:

Rob McFee, Division Director

1. CALL TO ORDER – 4:00 P.M.
2. DISCUSSION / BLUFFTON PARKWAY PHASE 5B ([backup](#))
3. CONSIDERATION OF CONTRACT AWARDS
  - A. Engineering Design Services for Spanish Moss Trail Phase 2 ([backup](#))
4. UPDATE / COST AND TYPE OF LIGHTS ON US HIGHWAY 278 NEAR PEPPER HALL PLANTATION TO ROSE HILL PLANTATION ([backup](#))
5. DISCUSSION / UPDATED SOLID WASTE MANAGEMENT PLAN DATED FEBRUARY 2013 ([backup](#))
6. DISCUSSION / CONDEMNATION OF OLD MILLER ROAD – LAKE POINT DRIVE CONNECTOR ([backup](#))
7. DISCUSSION / RENEWAL OF PERRYCLEAR DRIVE ROADWAY EASEMENT ([backup](#))
8. CONSIDERATION OF COUNTY PARTICIPATION IN FOUNDATION CHALLENGE GRANT FOR RAILTRAIL CONSTRUCTION ALLISON ROAD TO PORT ROYAL
9. CONSIDERATION OF REAPPOINTMENTS AND APPOINTMENTS
  - A. Solid Waste and Recycling Board
  - B. Southern Beaufort County Corridor Beautification Board
10. ADJOURNMENT



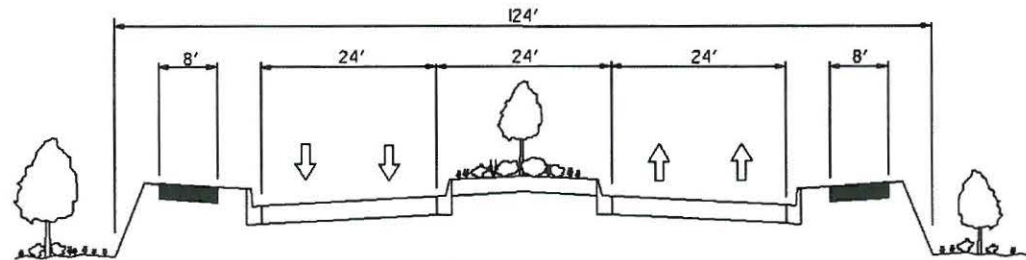
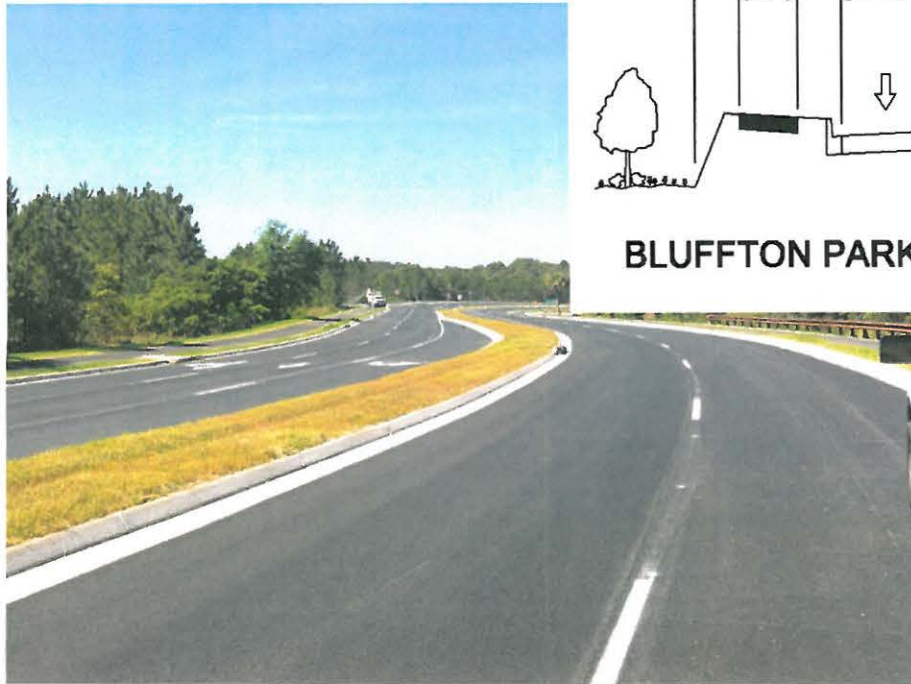


# Bluffton Parkway Extension Phase 5B

Beaufort County Public Facilities Committee

March 18, 2013

The project includes a new location extension of the Bluffton Parkway from the current intersection of Phase 4/Buckwalter Parkway to the current intersection of Phase 3/Buck Island Rd. for a distance of approximately 2.5 miles.



**BLUFFTON PARKWAY EXTENSION - PHASE 5A AND 5B**



# Bluffton Parkway Extension Phase 5B

Beaufort County Public Facilities Committee

March 18, 2013

## Project Development and Status

- County commissioned US 278 study – 2002, included concept of Bluffton Parkway extension to US 278
- Project Studies Begin- Spring 2006
- Public Meeting – August 22, 2006
- Public Meetings - October 17 & 19, 2006
- BTAG Presentation – March 12, 2007
- Public Meeting – April 3, 2007
- BTAG Presentation – July 23, 2007
- PSC Presentation – August 14, 2007
- PSC Presentation – December 11, 2007
- County Council Presentation – January 14, 2008
- Federal Highway Administration approves Environmental Assessment - February 2008
- Public Hearing – March 18, 2008
- Federal Highway Administration issues Finding of No Significant Impact (FONSI) – June 10, 2008
- Town of Bluffton approached Beaufort County regarding realignment of Phase 5B/Buckwalter Parkway Intersection – September 2012
- Public Meeting – February 21, 2013
- Preliminary Right of Way Plans submitted – February 25, 2013



## Bluffton Parkway Extension Phase 5B

Beaufort County Public Facilities Committee

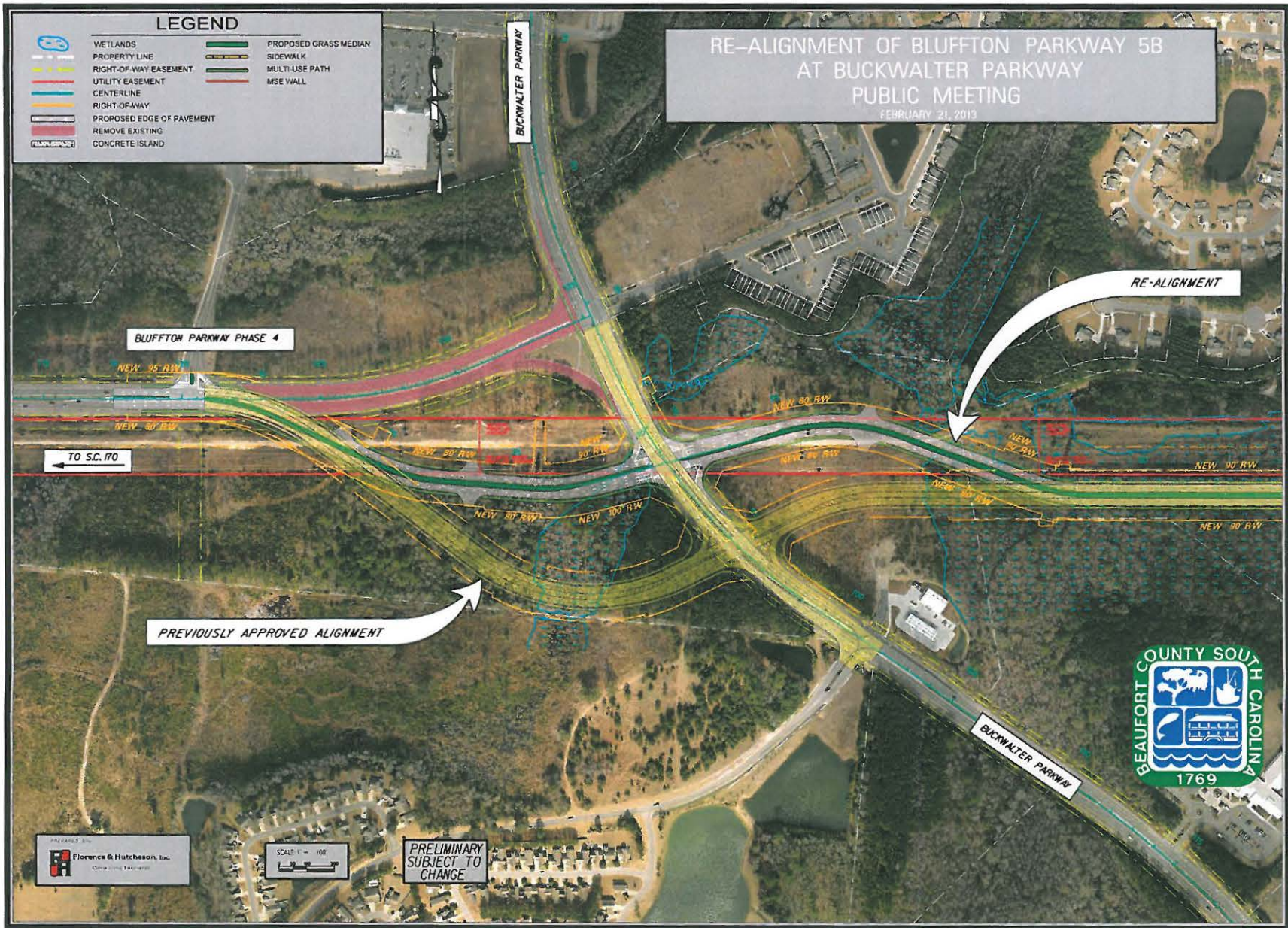
March 18, 2013

### Bluffton Parkway Phase 5B/Buckwalter Parkway Intersection Revision

Impacts	Original Alignment	Revised Alignment
Right of Way	44.9 Acres	44.7 Acres
Right of Way Costs	\$6.4 million	\$0.7 million
Construction Costs	\$17.9 million	\$18.2 million
Utility Relocation Costs	\$2 million	\$3.1 million
Noise Wall Costs	\$0	\$0
Cultural Resources Impacts	None	None <sup>1</sup>
Wetlands	16 Acres	15 Acres

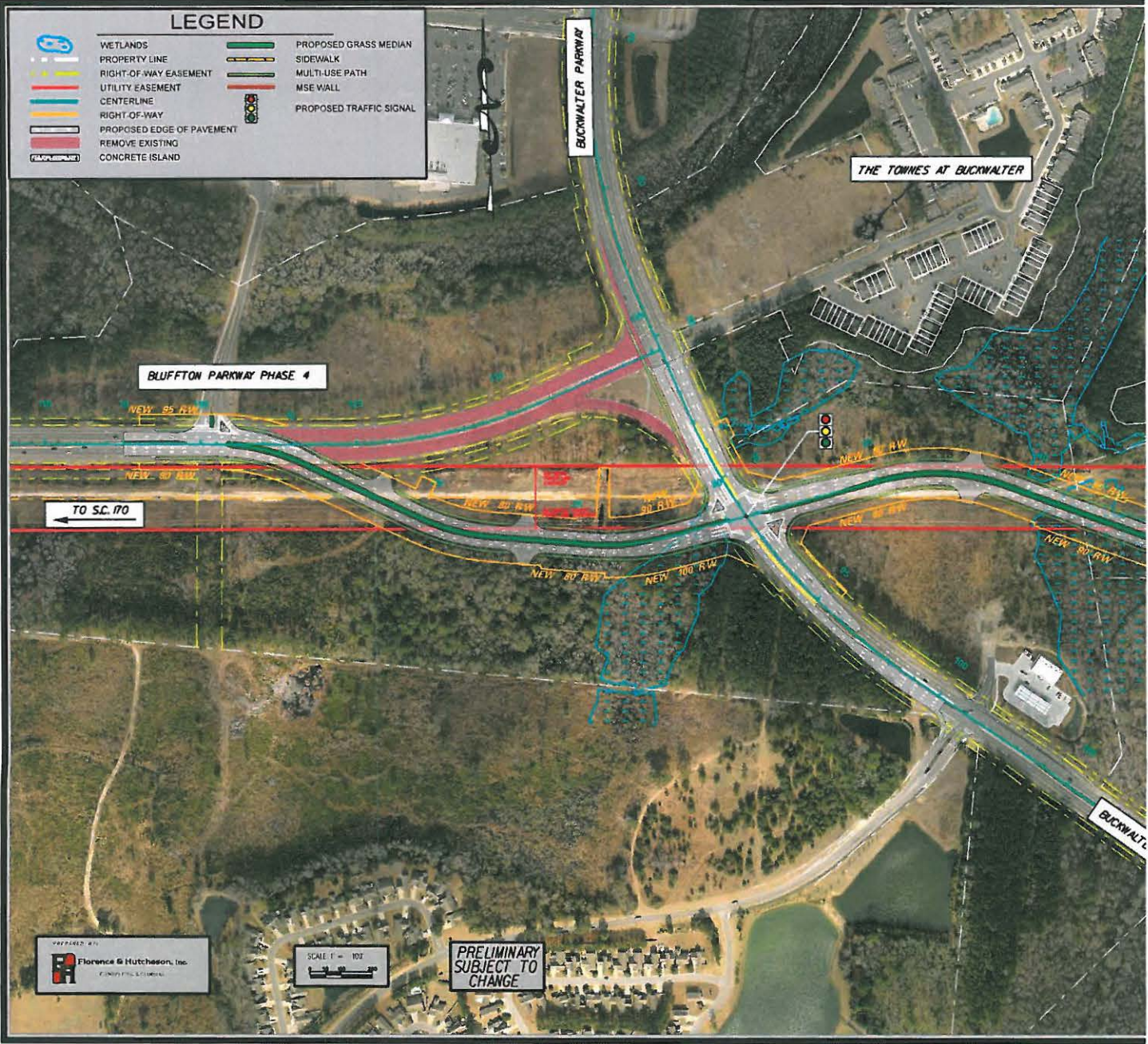
<sup>1</sup> Previously identified archaeological site located immediately adjacent to revised ROW; coordination with SHPO ongoing to determine effect.

# Bluffton Parkway Phase 5B/Buckwalter Parkway Intersection Revision



# Bluffton Parkway Extension Phase 5B





**LEGEND**

- |  |                           |  |                         |
|--|---------------------------|--|-------------------------|
|  | WETLANDS                  |  | PROPOSED GRASS MEDIAN   |
|  | PROPERTY LINE             |  | SIDEWALK                |
|  | RIGHT-OF-WAY EASEMENT     |  | MULTI-USE PATH          |
|  | UTILITY EASEMENT          |  | MSE WALL                |
|  | CENTERLINE                |  | PROPOSED TRAFFIC SIGNAL |
|  | RIGHT-OF-WAY              |  |                         |
|  | PROPOSED EDGE OF PAVEMENT |  |                         |
|  | REMOVE EXISTING           |  |                         |
|  | CONCRETE ISLAND           |  |                         |

**BLUFFTON PARKWAY PHASE 4**

**THE TOWNES AT BUCKWALTER**

**BUCKWALTER PARKWAY**

**TO SC. 170**

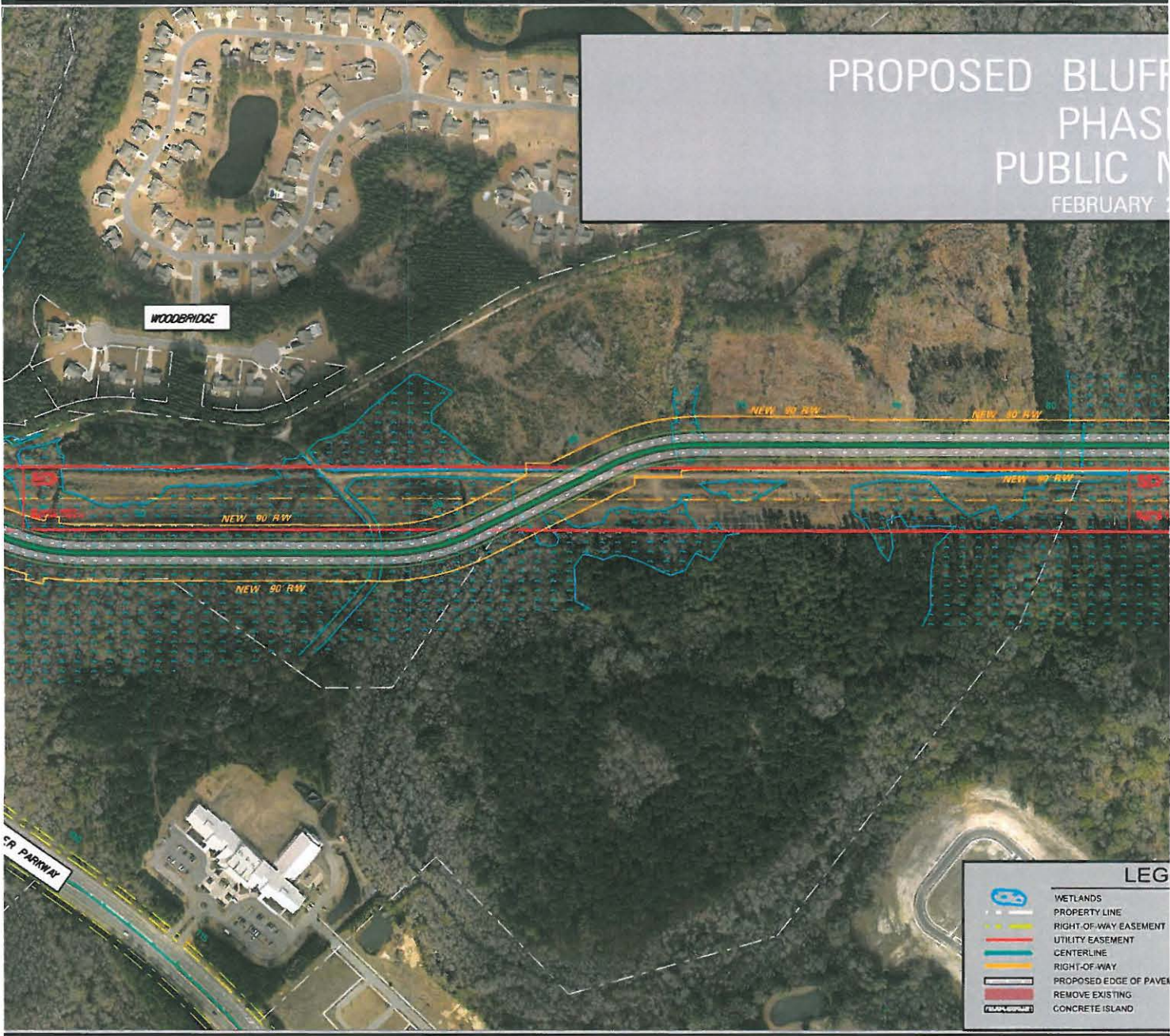
**BUCKWALTER**

PREPARED BY:  
**Florence & Hutchison, Inc.**  
 CIVIL ENGINEERS

SCALE 1" = 100'

**PRELIMINARY  
 SUBJECT TO  
 CHANGE**

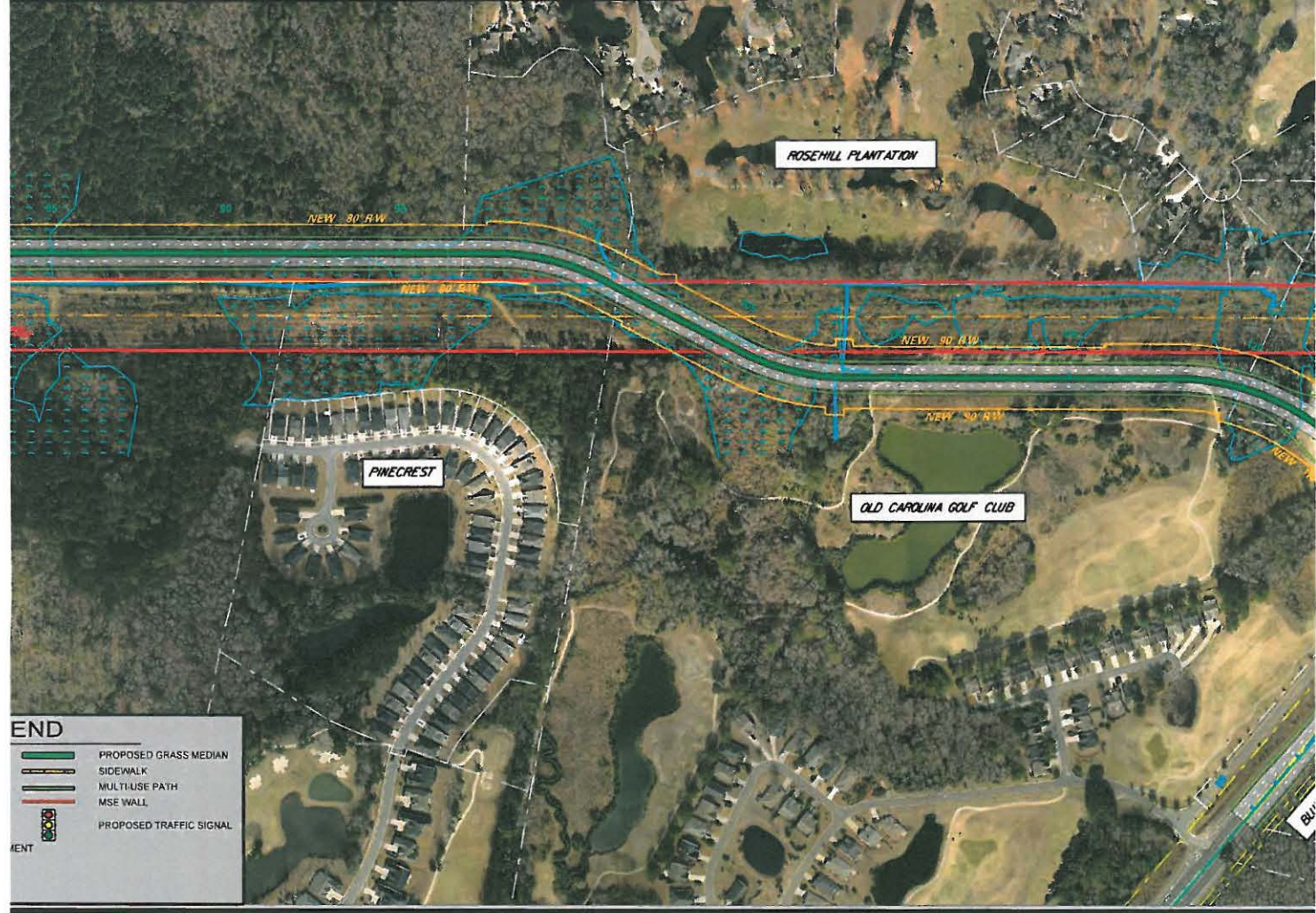
PROPOSED BLUFF  
PHASE  
PUBLIC M  
FEBRUARY 2










# STON PARKWAY E 5B MEETING

21, 2013



**END**

-  PROPOSED GRASS MEDIAN
-  SIDEWALK
-  MULTIUSE PATH
-  MSE WALL
-  PROPOSED TRAFFIC SIGNAL

MENT



PRELIMINARY  
SUBJECT TO  
CHANGE

**LEGEND**

- |  |                           |  |                         |
|--|---------------------------|--|-------------------------|
|  | WETLANDS                  |  | PROPOSED GRASS MEDIAN   |
|  | PROPERTY LINE             |  | SIDEWALK                |
|  | RIGHT-OF-WAY EASEMENT     |  | MULTI-USE PATH          |
|  | UTILITY EASEMENT          |  | MSE WALL                |
|  | CENTERLINE                |  | PROPOSED TRAFFIC SIGNAL |
|  | RIGHT-OF-WAY              |  |                         |
|  | PROPOSED EDGE OF PAVEMENT |  |                         |
|  | REMOVE EXISTING           |  |                         |
|  | CONCRETE ISLAND           |  |                         |



# Bluffton Parkway Extension Phase 5B

Beaufort County Public Facilities Committee

March 18, 2013

## Potential Timeline

- Public Comment period ends March 8, 2013 for revised alignment public meeting
- Beaufort County Council approve revised alignment (plans submitted 2-25-13) – March 2013
- Submit Re-Evaluation of Environmental Assessment to SCDOT – April 2013
- Finalize and sign Right-of-Way Plans – April 2013
- Acquire Right-of-Way – May 2013 to January 2014
- Finalize Utility Coordination – May 2013 to November 2013
- Submit & Negotiate permits – July 2013 to July 2014
- Prepare Final Construction Plans – May 2013 to October 2013



COUNTY COUNCIL OF BEAUFORT COUNTY  
**PURCHASING DEPARTMENT**

102 Industrial Village Road, Bldg 3 Post Office Drawer 1228  
Beaufort, South Carolina 29901-1228

David L. Thomas, Purchasing Director  
dthomas@bcgov.net 843.255.2353  
Richard Dimont, Contract Specialist  
rdimont@bcgov.net  
843.255.2352 FAX: 843.255.9437

TO: Councilman Gerald Dawson, Chairman, Public Facilities Committee  
FROM: Dave Thomas, CPPO, Purchasing Director *get*  
SUBJ: RFP# 1311490100217 Engineering Design Services for Spanish Moss Trail-Phase II  
DATE: April 10, 2013

**BACKGROUND:** Beaufort County issued a Request for Proposals (RFP) to firms capable of providing engineering and design services for the Spanish Trail Phase II Project, a 2.1 mile segment of the multi-use Spanish Moss Trail extending from Depot Road to Parris Island Gateway (US-21). The project will consist of a 12' wide concrete trail along the existing abandoned rail bed, and the retrofit of the existing concrete trestle bridge (Ealeys Trestle) over Battery Creek. The evaluation committee consisted of the following five (5) members: Don Smith, Beaufort County Construction Manager; Colin Kinton, Beaufort County Traffic Engineer; Robert Merchant, Beaufort County Planner; Joe Devito, Operations Director, Beaufort Jasper Water and Sewer Authority; and Eliza Hill, Planner, City of Beaufort. The evaluation committee interviewed the top three firms and selected Andrews and Burgess as the number one ranked firm.

The RFP evaluation process differs from a typical construction bid, in that the qualified firms are providing professional services and are selected based upon set evaluation criteria and qualifications, not project cost. After a firm is selected, a not-to-exceed price is negotiated with the number one ranked firm. During negotiations, project budget and value added engineering concepts are considered and discussed with the firm's design team. County staff met with the Andrews and Burgess and negotiated a final contract price not-to-exceed of \$271,579.

**FINAL EVALUATION RANKING:**

1. Andrews and Burgess, Beaufort, SC
2. Ward Edwards, Bluffton, SC
3. Thomas & Hutton, Savannah, GA
4. Hussey, Gay, Bell & DeYoung, Savannah, GA
5. LowCountry Engineering Consultants, Beaufort, SC
6. The LandPlan Group South, Inc. Mount Pleasant, SC
7. SGA Architecture, North Charleston, SC
8. H & K Engineering Group, Savannah, GA

**FUNDING:** Account 48060011-54435 Rail Trail Construction. This project is contingent on the contract approval by SCDOT due to federal funding requirements. No funds will be expended until final approval by SCDOT.

**FOR ACTION:** Public Facilities Committee meeting occurring on April 15, 2013.

**RECOMMENDATION:** The Public Facilities Committee approve and recommend to County Council approval of the contract award to Andrews and Burgess in the amount of \$271,579 for the engineering and design services for the Spanish Moss Trail Phase II.

CC: Gary Kubic, County Administrator *GKubic*  
Bryan Hill, Deputy Administrator *BHill*  
David Starkey, Chief Financial Officer *DStarkey*  
Robert McFee, Director of Engineering & Infrastructure *RMcFee*  
Monica Spells, Compliance Officer *MSpells*  
Richard Dimont, Contract Specialist *RDimont*

Att: Summary of Ranking

**Beaufort County  
RFP Spanish Moss Trail Design Services Phase 2**

4/10/2013

Proposal Notice No.: 13114904100217

**Committee**

<b>Member</b>	<b>TLGS</b>	<b>HGBD</b>	<b>LEC</b>	<b>SGA</b>	<b>Ward Edwards</b>	<b>Thomas &amp; Hutton</b>	<b>H &amp; K Eng</b>	<b>Andrews &amp; Burgess</b>
	<b>Points</b>	<b>Points</b>	<b>Points</b>	<b>Points</b>	<b>Points</b>	<b>Points</b>	<b>Points</b>	<b>Points</b>
Joe Devito	68	51	80	63	89	74	69	93
Eliza Hill	70	87	63	62	90	89	70	93
Rob Merchant	79	83	82	85	94	85	72	90
Colin Kinton	83	78	80	75	85	86	70	88
Don Smith	76	81	75	74	82	87	62	84
<b>Totals</b>	<b>376</b>	<b>380</b>	<b>380</b>	<b>359</b>	<b>440</b>	<b>421</b>	<b>343</b>	<b>448</b>

The Evaluation Committee interviewed the top three firms.

Final Ranking:

1. Andrews and Burgess
2. Ward Edwards
3. Thomas & Hutton
4. HGBD
5. LEC
6. TLGS
7. SGA
8. H & K Eng.

## Rainey, Sue

---

**From:** McFee, Robert  
**Sent:** Friday, April 12, 2013 11:54 AM  
**To:** Rainey, Sue  
**Cc:** Hickman, Maggie  
**Subject:** FW: Back up for PF item 4-- Lights on 278

For inclusion in packages

---

**From:** Kinton, Colin  
**Sent:** Monday, March 18, 2013 9:04 AM  
**To:** Bob Casavant; McFee, Robert  
**Cc:** Tim Hutchinson  
**Subject:** RE: Lights on 278

Thanks Bob. This summarizes our discussion last week.

Colin Kinton, P.E.  
Beaufort County Traffic & Transportation Engineer  
[ckinton@bcgov.net](mailto:ckinton@bcgov.net)  
Phone: (843) 255-2940  
Beaufort County, SC



Please consider the environment before printing this email.

---

**From:** Bob Casavant [<mailto:BCASAVANT@palmetto.coop>]  
**Sent:** Friday, March 15, 2013 4:50 PM  
**To:** McFee, Robert; Kinton, Colin  
**Cc:** Tim Hutchinson  
**Subject:** Lights on 278

Good Afternoon Gentlemen:

I wanted to update you both on conversions that I've had with County Council Woman, Cynthia M. Bensch. She stopped by my office a few weeks ago and inquired about lighting the Hwy 278 corridor from McGarvey's to the Hilton Head Bridge. I spoke to her for some time and explained a few technical terms and various options for lights. She called me again last week and requested that Palmetto Electric Cooperative prepare a lighting design from Pepper Hall to Buck Island Road using Cobra Head Fixtures.

I returned her call earlier this week (Tuesday I think) and told her that Palmetto Electric Cooperative did not have the resources or technical expertise to provide a design of this magnitude. I recommended that she coordinate her efforts through the professionals on staff at Beaufort County (you Gentlemen) and that she contact a design firm that had experience with SCDOT requirements and design standards. I did tell her that I thought a rough budget of \$1,000,000 for her project was probable and could be even more.

If and when a design is provided, We at Palmetto will be more than happy to provide our estimates to provide transformers, road bores, conduit, wire, ect... as needed to power the fixtures. Of course, we'd be happy to consider Operating and Maintaining as we have done for you in the past. A rate will need to be determined, based on the type of fixture and other factors.

Please understand that we at Palmetto want to help the County but we cannot provide the level of expertise and specialization that is required for this particular project.

Feel free to contact me if you have any questions or concerns.

*Bob Casavant*

Robert J. Casavant, P.E.  
Engineering Services Manager  
Palmetto Electric Cooperative, Inc.  
One Cooperative Way  
Hardeeville, SC 29927  
Office 843-208-5508  
Fax 843-208-5532  
Cell 843-384-2651



---

PLEASE READ THIS WARNING: All e-mail sent to or from the Palmetto Electric corporate e-mail system is subject to archival, monitoring, and/or review, by and/or disclosure to, someone other than the recipient. This message is intended only for the use of the person(s) ("intended recipients") to whom it is addressed. It may contain information that is privileged and confidential. If you are not the intended recipient, please contact the sender as soon as possible and delete the entire message without reading it or making a copy. Any dissemination, distribution, copying, or other use of this message or any of its content by any person other than the intended recipient is strictly prohibited. Palmetto Electric has taken precautions to screen this message for viruses, but we cannot guarantee that it is virus free nor are we responsible for any damage that may be caused by this message.





**BEAUFORT COUNTY PUBLIC WORKS**  
 120 Shanklin Road  
 Beaufort, South Carolina 29906  
 Voice (843) 255-2800 Facsimile (843) 255-9435



TO: Councilman Gerald Dawson, Chairman, Public Facilities Committee

VIA: Gary Kubic, County Administrator *GKubic*  
 Bryan Hill, Deputy County Administrator *BHill*  
 Robert McFee, Division Director, Engineering and Infrastructure *JRMcf*  
 Monica Spells, Compliance Officer *Spells*  
 Eddie Bellamy, Public Works Director *MCB*

FROM: James S. Minor, Jr., Solid Waste Manager *Dom*

SUBJ: Updated Beaufort County Solid Waste Management Plan

DATE: April 5, 2013

**BACKGROUND:** The South Carolina Solid Waste Policy and Management Act of 1991 created a requirement for each County to develop and maintain a Solid Waste Management Plan (SWMP). The SWMP is required to cover a twenty (20) year planning horizon explaining how disposal of current and projected waste volumes within the County will be properly handled. The County's SWMP also must address County recycling programs that contribute toward achieving State waste reduction and recycling goals. The current Beaufort County SWMP was developed and approved by Council in February 2000.

In view of the rapid growth and changes within the County since February 2000, staff felt a major revision of the SWMP was due. Beginning in June of 2011 staff and the Solid Waste & Recycling Citizen Advisory Board held a series of advertised/public workshops to review and revise the SWMP. In addition, staff met with staff of SCDHEC to review each chapter and provide comments on the SWMP revision throughout the process. The SWMP revision was completed at the February 2013 meeting of the Board when the SWMP revision dated February 2013 was approved and recommended to be sent to Council for approval.

Major revisions to the plan include:

1. States that, "To manage waste, Beaufort County plans to site, permit and construct a transfer station of suitable capacity to handle waste streams for the next twenty years."
2. Incorporates the recommendation from the 2010 Comprehensive Plan: "to explore means of initiating mandated curbside pick-up for solid waste Districts 6, 7 & 9."
3. Added that "Additionally, as curbside services are implemented across the County, services at Convenience Centers within these areas may be reduced / modified, providing for the combination / closure of some facilities."
4. Organizes the document in accordance with State guidelines.

**FOR ACTION:** Public Facilities Committee meeting occurring on April 15, 2013.

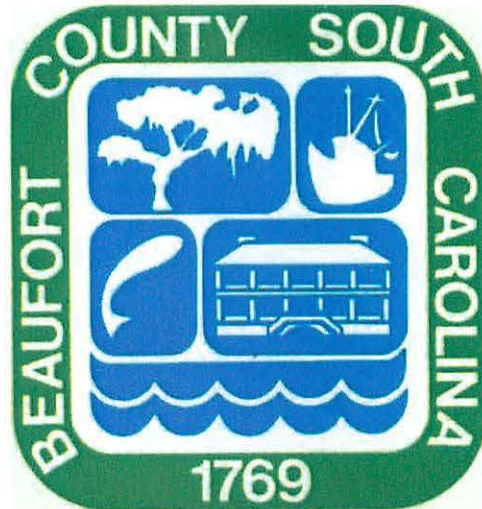
**RECOMMENDATION:** Recommend that the Public Facilities Committee approve and recommend to County Council the updated Solid Waste Management Plan dated February 2013.



MEMBER  
NATIONAL SAFETY COUNCIL



**BEAUFORT COUNTY, SOUTH CAROLINA  
2013 SOLID WASTE MANAGEMENT PLAN**



**Prepared for and by:**

**Beaufort County**

**100 Ribaut Rd.**

**Beaufort, South Carolina 29901**

**February 2013**

## 1.0 EXECUTIVE SUMMARY

1.1 PLAN DEVELOPMENT AND OBJECTIVES.....	1
1.2 PLAN REVISION.....	2
1.3 ANNUAL PROGRESS REPORTS.....	2

## 2.0 LEGISLATIVE AUTHORITY

2.1 FEDERAL AND STATE AUTHORITY.....	3
2.2 EXISTING SOLID WASTE ORDINANCES.....	4
2.3 POLICIES.....	4
2.4 ORGANIZATION STRUCTURE.....	4

## 3.0 DEMOGRAPHICS

3.1 LAND DESCRIPTION.....	6
3.2 POPULATION TRENDS.....	7
3.3 ECONOMIC TRENDS.....	8
3.4 TOURIST INFORMATION.....	9

## 4.0 EXISTING SOLID WASTE MANAGEMENT

4.1 GENERATION AND CHARACTERIZATION.....	10
4.2 COLLECTION, TEMPORARY STORAGE, AND TRANSPORTATION OF SOLID WASTE.....	10
4.2.1 CONVENIENCE CENTERS.....	11
4.3 SOLID WASTE TRANSFER STATIONS.....	14
4.4 SOLID WASTE PROCESSING FACILITIES.....	14
4.5 SHORT TERM STRUCTURAL FILL.....	14
4.6 CLASS ONE LANDFILLS (LAND-CLEARING DEBRIS AND YARD WASTE).....	15
4.7 CLASS TWO LANDFILL (CONSTRUCTION, DEMOLITION, AND LAND-CLEARING DEBRIS LANDFILLS & CERTAIN INDUSTRIAL LANDFILLS).....	15
4.8 CLASS THREE LANDFILLS (MUNICIPAL, INDUSTRIAL, SLUDGE, INCINERATOR ASH).....	17
4.9 SOLID WASTE INCINERATORS.....	17
4.10 COMPOSTING AND WOOD CHIPPING/SHREDDING FACILITIES.....	17
4.11 USED OIL COLLECTION AND PROCESSING FACILITIES.....	18
4.12 WASTE TIRE HAULERS, COLLECTION FACILITIES, PROCESSING FACILITIES, AND DISPOSAL FACILITIES.....	19

## TABLE OF CONTENTS

---

4.13 RESEARCH, DEVELOPMENT, AND DEMONSTRATION (RD&D) PERMITS .....	19
4.14 LAND APPLICATION OF SOLID WASTE PERMITS .....	19
4.15 RECYCLING PROGRAMS .....	20
4.16 SPECIAL WASTES .....	20
4.17 HOUSEHOLD HAZARDOUS MATERIALS (HHM).....	21
4.18 IMPORT AND EXPORT OF WASTE.....	21
4.19 SOLID WASTE MANAGEMENT FUNDING.....	22
<b>5.0 FUTURE SOLID WASTE MANAGEMENT</b>	
5.1 WASTE STREAM PROJECTIONS .....	23
5.1.1 CLASS ONE WASTE (LAND CLEARING DEBRIS AND YARD TRASH).....	23
5.1.2 CLASS TWO WASTE (CONSTRUCTION, DEMOLITION, AND LAND CLEARING AND INDUSTRIAL).....	23
5.1.3 CLASS THREE WASTE (MUNICIPAL, INDUSTRIAL, SLUDGE, INCINERATOR ASH) ...	23
5.2 COLLECTION, TEMPORARY STORAGE, AND TRANSPORTATION OF SOLID WASTE .....	25
5.2.1 CONVENIENCE CENTERS .....	26
5.3 SOLID WASTE TRANSFER STATIONS .....	28
5.4 SOLID WASTE PROCESSING FACILITIES .....	30
5.5 CLASS ONE LANDFILLS (LAND-CLEARING DEBRIS AND YARD TRASH) .....	30
5.6 CLASS TWO LANDFILLS (CONSTRUCTION, DEMOLITION, AND LAND-CLEARING DEBRIS AND INDUSTRIAL WASTE).....	30
5.7 CLASS THREE WASTE (MUNICIPAL, INDUSTRIAL, SLUDGE, INCINERATOR ASH).....	30
5.8 SOLID WASTE INCINERATORS .....	32
5.9 COMPOSTING AND WOOD CHIPPING/SHREDDING FACILITIES.....	31
5.10 USED OIL COLLECTION AND PROCESSING FACILITIES.....	32
5.11 WASTE TIRE HAULERS, COLLECTORS, PROCESSING FACILITIES, AND DISPOSAL FACILITIES .....	33
5.12 RESEARCH, DEVELOPMENT, AND DEMONSTRATION (RD&D) PERMITS .....	32
5.13 LAND APPLICATION OF SOLID WASTE PERMITS .....	33
5.14 RECYCLING PROGRAMS .....	33
5.15 SPECIAL WASTES .....	34
5.16 HOUSEHOLD HAZARDOUS MATERIALS (HHM).....	35
5.17 IMPORT AND EXPORT OF WASTE.....	34
5.18 STORM DEBRIS MANAGEMENT .....	34

---

# TABLE OF CONTENTS

---

## 6.0 GOALS, POLICIES, STRATEGIES, AND BARRIERS

6.1 REDUCTION .....	35
6.2 RECYCLING.....	36
6.3 EDUCATIONAL PROGRAMS .....	36
6.4 TECHNICAL ASSISTANCE.....	38

## 7.0 REVISION AND CONSISTENCY WITH WASTE MANAGEMENT PLANS

7.1 ANNUAL PROGRESS REPORTS .....	39
7.2 REVISIONS TO THE BEAUFORT COUNTY SOLID WASTE MANAGEMENT PLAN.....	39
7.3 DETERMINING CONSISTENCY WITH COUNTY SOLID WASTE MANAGEMENT PLAN .....	40

## 8.0 FULL COST DISCLOSURE

8.1 BEAUFORT COUNTY FULL COST DISCLOSURE.....	41
---	----

## Appendices

A Beaufort County Code of Ordinance (Chapter 62 Solid Waste Management)	
---	--

**TABLES**

**TABLE 1** – BEAUFORT COUNTY POPULATION TREND (1990-2010)..... 7

**TABLE 2** – BEAUFORT COUNTY POPULATION PROJECTIONS (2015-2035) ..... 8

**TABLE 3** – BEAUFORT COUNTY SOLID WASTE DISPOSAL (AVERAGE WASTE GENERATION FY09 -  
FY11) ..... 10

**TABLE 4** – BEAUFORT COUNTY CONVENIENCE/RECYCLING DROP-OFF CENTERS ..... 12

**TABLE 5** – BEAUFORT COUNTY WASTE GENERATION PROJECTIONS (2015-2035)..... 24

**TABLE 6** – BEAUFORT COUNTY SOLID WASTE FULL COST DISCLOSURE (FY11)..... 41

**EXHIBITS**

**EXHIBIT A** – BEAUFORT COUNTY LOCATION MAP ..... 6

**EXHIBIT B** – BEAUFORT COUNTY CONVENIENCE/RECYCLING DROP-OFF CENTERS LOCATION  
MAP..... 13

**EXHIBIT C** – BEAUFORT COUNTY CLASS TWO LANDFILLS LOCATION MAP..... 16

## SECTION 1.0 - EXECUTIVE SUMMARY

---

### 1.1 Plan Development and Objectives

Environmental concerns in the late 1980's and early 1990's prompted both the United States Environmental Protection Agency and South Carolina's General Assembly to pass new regulations pertaining to the management of solid waste. On May 27, 1991 the South Carolina Solid Waste Policy and Management Act of 1991 (herein the "Act") was signed into law. This Beaufort County 2013 Solid Waste Management Plan (herein "Plan") dated February, 2013 was prepared to help maintain compliance with the Act, to be consistent with recent court decisions, regulation revisions and other changes to solid waste management, and to develop a fundamentally reliable long-term (for a planning period of at least twenty years) plan for solid waste management for Beaufort County.

The initial Beaufort County Solid Waste Management Plan (developed by the County in 2000) included public participation through interaction with the Beaufort County Solid Waste and Recycling Board (SWRB). The SWRB was formed, in accordance with the requirements of the Act, to assist the County in the development of the required plan. In developing the original plan, information was gathered on the County's existing solid waste system, recycling and energy markets, and recycling, recovery, and disposal technologies and programs. Information was gathered from incorporated as well as unincorporated areas of the County.

The information included in this Plan was obtained from the County's previous Solid Waste Management Plan (SWMP) dated February, 2000, Beaufort County Solid Waste staff, the South Carolina Department of Health and Environmental Control (SCDHEC), the FY09 through FY11 South Carolina Solid Waste Management Annual Reports, the South Carolina Budget and Control Board, Office of Research and Statistics, 2010 Beaufort County Comprehensive Plan, and the South Carolina Parks Recreation and Tourism. A series of workshops of the Solid Waste and Recycling Board and Beaufort County staff were conducted from September 2011 through February 2013 following the regularly scheduled monthly Board meetings.



## SECTION 1.0 - EXECUTIVE SUMMARY

---

Each Chapter of the plan was reviewed, edited and discussed. These workshop meetings were open to the public and advertised in accordance with Beaufort County procedures.

### 1.2 Plan Revision

As outlined in the Act, the Plan must be reviewed and revised as needed to include changes that are deemed necessary at the time. As technologies change, as regulations change, as interpretations of existing laws are clarified by the Courts, and as specific solid waste management needs of the County change, revisions to the Plan will be made. This revision addresses major changes associated with the consolidated landfill regulation (R.61-107.19), revisions to the population and waste generation data, as well as outcomes of various court cases that impact solid waste planning in the state of South Carolina. Revisions will be made in accordance with Chapter 7.2 (page 39) of the Beaufort County Solid Waste Management Plan.

### 1.3 Annual Progress Reports

Annual Progress Reports are required by the Act for each fiscal year (July 1 – June 30) and are due to the SCDHEC by October 1 of each year. An Annual Progress Report will continue to be prepared by Beaufort County and submitted to the SCDHEC each year. All solid waste management facilities located in Beaufort County must submit an Annual Report for their facility to the Beaufort County Solid Waste Section of Public Works each year and must submit an annual report to the SCDHEC each year. All this information must be collected and analyzed to plot a prudent strategy for managing the County's solid waste in the future. The Solid Waste Section of Public Works will maintain the Solid Waste Management Plan for Beaufort County.

## SECTION 2.0 - LEGISLATIVE AUTHORITY

---

### 2.1 Federal and State Authority

The primary federal law relating to solid waste management is the Resource Conservation and Recovery Act (RCRA) of 1976, established by the EPA. The first section of this law, Subtitle C (Hazardous Waste), established a national regulatory program to control the management of hazardous wastes. South Carolina received authorization from the EPA to initiate these activities in 1985. The second section of RCRA is Subtitle D (Solid Waste), which was published in the Federal Register on October 9, 1991. This section established a framework for federal, state, and local government cooperation in solid waste management. As a result of this law, the federal government provides minimum national standards for protecting human health and the environment and technical assistance to states for planning and implementing their own solid waste management policies.

The principal law that governs solid waste management within the State of South Carolina is the Solid Waste Policy and Management Act. Of 1991 (The Act) The Act authorized the SCDHEC to enforce the appropriate federal and state standards. Regulations are in place for the management of Construction, Demolition, and Land-Clearing Debris (C&D), Industrial Solid Waste, Municipal Solid Waste (MSW), Waste Processing, Waste Tires, Waste Oil, Solid Waste Transfer Stations, etc.

Section 44-96-80(J) of the Act gives the governing body of each county the responsibility and authority to provide for the management of solid waste within the county. Section 44-96-80(K) authorizes each county to enact ordinances that may be necessary to carry out its responsibilities under the Act as long as such ordinances are consistent with the state solid waste management plan, with any provisions of the Act, with any other applicable provisions of state law, or with any regulation promulgated by SCDHEC providing for the protection of public health and safety or for protection of the environment.

## SECTION 2.0 - LEGISLATIVE AUTHORITY

---

### 2.2 Existing Solid Waste Ordinances

Beaufort County Code of Ordinances (Chapter 62, Solid Waste) that provide authority over solid waste management is included as Appendix A of this report. These ordinances cover issues such as littering, solid waste collection, solid waste hauling, solid waste disposal, and the advisory function of the Solid Waste Advisory Board.

### 2.3 Policies

It is the policy of Beaufort County to operate its solid waste management in an efficient and economical manner. It is also the policy of the County to promote the reuse and recycling of materials rather than the treatment, storage, or disposal of wastes. Methods of solid waste management shall protect public health, safety and the environment by employing the best available technology economically feasible for pollution control.

### 2.4 Organization Structure

The Beaufort County Public Works Department oversees the daily management of the solid waste program and makes recommendations to the County Council via the Solid Waste and Recycling Board on disposal options, disposal facility development, recycling programs, and contracts with private companies. The Beaufort County Council has the ultimate authority regarding solid waste management within the County. The following solid waste representatives for Beaufort County should be contacted for information regarding solid waste management in the County.

**Mr. Robert McFee, Director of Engineering and Infrastructure**

102 Industrial Village Rd., Building #3  
Beaufort, South Carolina 29901-1228  
Phone: (843) 255-2700  
Fax: (843) 255-9420  
E-mail: [rmcfee@bcgov.net](mailto:rmcfee@bcgov.net)

## SECTION 2.0 - LEGISLATIVE AUTHORITY

---

**Mr. Eddie Bellamy, Public Works Director**

Beaufort County Public Works  
120 Shanklin Rd.  
Beaufort, South Carolina 29906  
Phone: (843) 255-2732  
Fax: (843) 255-9435  
E-mail: [eddieb@bcgov.net](mailto:eddieb@bcgov.net)

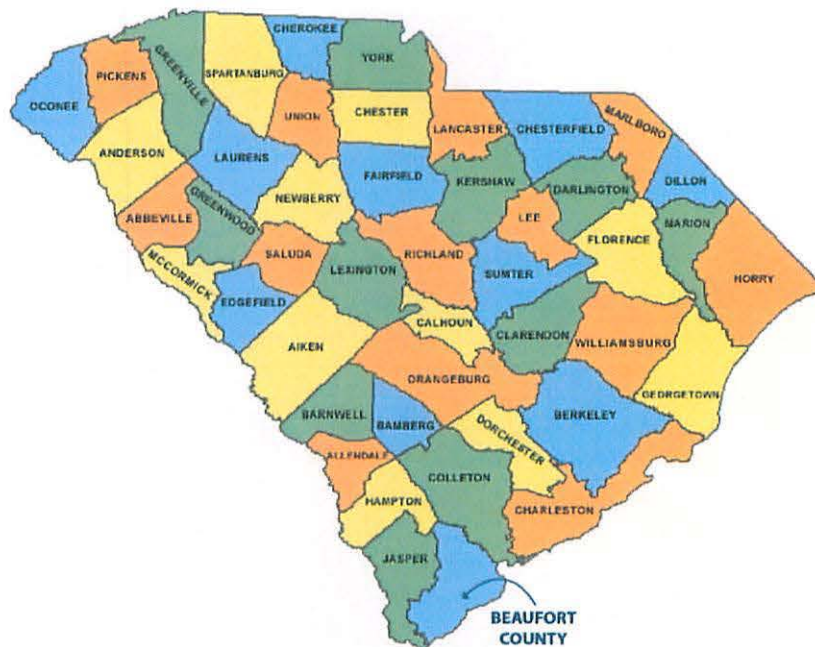
**Mr. Jim Minor, Solid Waste Manager**

Beaufort County Public Works  
120 Shanklin Rd.  
Beaufort, South Carolina 29906  
Phone: (843) 255-2735  
Fax: (843) 255-9435  
E-mail: [jminor@bcgov.net](mailto:jminor@bcgov.net)

### 3.1 Land Description

Beaufort County is located on the Atlantic coast in the southeast tip of South Carolina (as illustrated in Exhibit A). Beaufort County encompasses 828 square miles with a population density of 58 people per sq mile according to the 2010 US Census. Interstate 95 passes the western border of the Beaufort County with only a short interface in the northern section of the County. Jasper County buffers I95 along the remainder of the western edge of the County. The principal arterial roads are US 17 in the north that connects to Charleston, US 21 that spans from the north part of the county to St. Helena Island; 802 on Port Royal Island connects US 21 TO Rt. 170; Rt 170 runs from Port Royal Island to the southern edge of the County; US 278 runs west to east connecting I 95 to Hilton Head Island. Fifty-eight percent of the 468,000 acres in the County consists of freshwater wetlands, open waters, sounds, marshes and estuaries. Beaufort County is home to five municipalities: the City of Beaufort, the Towns of Bluffton, Port Royal, Hilton Head Island, and Yemassee. The percentage of land within the municipal boundaries has grown from 11 to 32% within the past ten years.

**Exhibit A – Beaufort County Location Map**



## SECTION 3.0 – DEMOGRAPHICS

---

Land use is an important characteristic to be evaluated in the development and implementation of a solid waste management system because it indicates areas of growth and urban development (both of which result in increased waste generation). In addition, areas of concentrated growth can cause congestion, which could adversely affect the collection and transportation of solid waste.

Beaufort County, along with several of the municipalities, is initiating a new form based zoning code that encourages infill and densification in the areas that are already considered urban and suburban. The rural areas are designated to remain sparsely populated and undeveloped. This pattern encourages the use of pick-up routes in the most densely populated areas and the continuation of Convenience Center access in the more rural portions of the county. Traffic patterns for solid waste transport will also be evaluated as the changes in development patterns evolve.

### 3.2 Population Trends

2010 US Census data shows the total population of the County is 162,233, growing by 34% between 2000 and 2010.

Table 1 illustrates the approximate population of Beaufort County from 1990 to 2010, including the percent change over a twenty (20) year period.

**Table 1.** Beaufort County Population Trend (1990-2010)

Year	Population
1990	86,425
2000	120,937
2010	162,233
<b>% Change</b>	<b>47</b>

Source: SC Budget & Control Board, Office of Research & Statistics

## SECTION 3.0 – DEMOGRAPHICS

---

The “Population Projections”, prepared by the South Carolina Office of Research and Statistics, predict over the next twenty (20) years Beaufort County is expected to increase almost 26% in population. A similar increase in its solid waste generation, depending on recycling trends and markets could also be experienced.

Table 2 illustrates the projected population over a twenty (20) year period (2015 - 2035) for the County. Corresponding projected waste stream generation numbers are presented in Section 5.0 - Future Solid Waste Management.

**Table 2.** Beaufort County Population Projections (2015-2035)

Year	Population
2015	170,640
2020	185,220
2025	199,780
2030	215,270
2035	230,240

Source: South Carolina Budget & Control Board, Office of Research & Statistics

### 3.3 Economic Trends

The characteristics of a local economy are significant indicators of growth. Changes in the economic base will directly affect solid waste management within Beaufort County and must be an integral part of solid waste planning. The availability and type of employment impacts the demand for housing, retail trade, and services.

Current economic drivers include tourism, the military, the retirement industry, residential development, education, and healthcare. Industry and business in Beaufort County are crucial factors in solid waste planning. As the number of industries and businesses in the County increases, the amount of waste generated within the County also typically increases. Due to the coastal location and sensitive

## SECTION 3.0 – DEMOGRAPHICS

---

marsh environment in the County, large industry growth is not anticipated. Probable commercial growth will include small light manufacturing businesses and technology companies. The four economic development focus areas are Distribution and Logistics, Aeronautics, Knowledge-Based, and Green Industries. (Source: Beaufort County Comprehensive Plan, Chapter 7, Economic Development)

### **3.4 Tourist Information**

Located in the heart of the Lowcountry, Beaufort County is home to the historic City of Beaufort and the popular resort community of Hilton Head Island, as well as three military bases. It is also situated midway between the celebrated cities of Charleston and Savannah. These attractions, coupled with 30 miles of Atlantic coastline, inlets, rivers and marshlands, has attracted a large influx of tourists and new residents over the last decade, making Beaufort County one of the fastest growing counties in South Carolina.

Travelers passing through the county have a significant impact to the economy. In FY2010 SCPRT reported that the impact from travel in Beaufort County was more than 956 million dollars. There is a direct correlation between tourism and generation of solid waste and must be accounted for during the solid waste planning process.



## SECTION 4.0 – EXISTING SOLID WASTE MANAGEMENT

---

### 4.1 Generation and Characterization

The Act requires that all solid waste facilities conduct accurate record keeping of waste stream data. Due to economic conditions, major fluctuations have occurred in recent years making it problematic to predict trends for future waste generation. Regardless, Table 3 illustrates the average amounts and types of wastes generated in Beaufort County and disposed of during the three-year period ending with FY11 along with the corresponding generation rates (based on the average population of Beaufort County during the referenced three-year period) in pounds per person per day (p/p/d).

**Table 3.** Beaufort County Solid Waste Disposal (Average Waste Generation FY09 - FY11)

Waste Stream	Tons	Generation Rate (p/p/d)
Class Three	158,427	5.40
Class Two	62,891	2.64
<b>Total</b>	<b>221,318</b>	<b>8.04</b>

Source: FY09-FY11 South Carolina Solid Waste Management Annual Report

### 4.2 Collection, Temporary Storage, and Transportation of Solid Waste

Both public and private waste collection is conducted within Beaufort County. Residential waste is collected curbside by the City of Beaufort, Town of Port Royal and Town of Bluffton through contracts with local private waste hauling companies. The Town of Hilton Head Island has established curbside collection for their residents through an exclusive franchise agreement with a local private waste hauling company. Additionally, private waste collection/hauling firms contract individually with citizens and/or neighborhoods to provide curbside collection throughout the County. Beaufort County operates convenience centers across the County for citizens. Commercial and industrial waste is hauled by private waste collection companies.

## SECTION 4.0 – EXISTING SOLID WASTE MANAGEMENT

---

### 4.2.1 Convenience Centers

Beaufort County provides eleven (11) staffed convenience centers for the citizens in the County to bring their waste and recyclables. Class Three wastes, Class Two wastes and recyclables are collected at each site. Special events to collect electronics (E-waste) and household hazardous wastes are performed at Public works locations in both the northern and southern portion of the County several times each year. Items typically recycled at the referenced convenience centers include aluminum and steel food cans, lead acid batteries, cardboard, mixed paper, glass (clear, green and brown), plastic (#1 and #2), used oil and oil filters, paint, and tires. Shanklin, Hilton Head, Bluffton and St. Helena are the only convenience centers that accept appliances (white goods) and scrap metal. Shanklin, Pritchardville, Sheldon, St. Helena, and Bluffton are the only stations that currently accept used oil and gasoline mixtures. A large quantity of oil such as a drum is currently only accepted at Lobeco which has the capability (farmer's oil tank) to pump oil from the drum. One (1) un-staffed center is also located on Daufuskie Island. The planned construction to replace this facility with a manned facility is currently delayed.

Please refer to Table 4 and Exhibit B for the names and locations of the convenience/recycling drop-off centers serviced by Beaufort County. The convenience/recycling drop-off center numbers in Table 4 correspond to the locations illustrated in Exhibit B. For additional information concerning recycling with Beaufort County please contact:

**Mrs. Carol Murphy, Recycling Coordinator**

Beaufort County Public Works  
120 Shanklin Road  
Beaufort, South Carolina 29906  
Phone: (843) 255-2734  
Fax: (843) 255-9480  
E-mail: [cmurphy@bcgov.net](mailto:cmurphy@bcgov.net)

## SECTION 4.0 – EXISTING SOLID WASTE MANAGEMENT

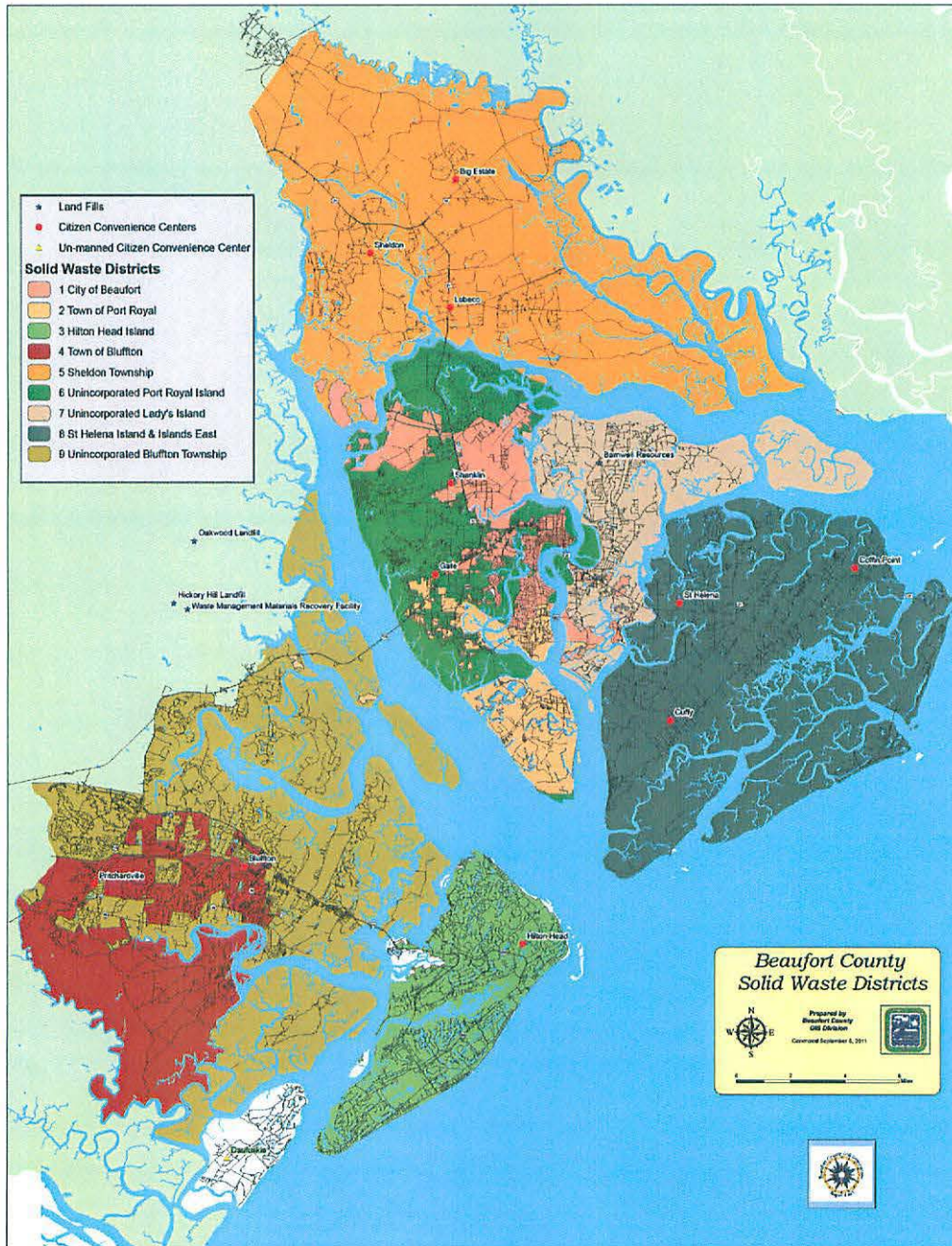
---

**Table 4 – Beaufort County Convenience/Recycling Drop-Off Centers**

Convenience/Recycling Drop-Off Centers		Location
Number	Name	
1	Big Estate	63 Big Estate Road
2	Sheldon	261 Johnson Road
3	Shanklin	80 Shanklin Road
4	Gate	102 Grober Hill Road
5	Lobeco	6 Keans Neck Road
6	Bluffton	104 Simmonsville Road
7	Pritchardville	270 Gibbet Road
8	Hilton Head	26 Summit Drive
9	Coffin Point	20 Cee Cee Road
10	Cuffy	138 Cuffy Road
11	St. Helena	639 Sea Island Parkway

# SECTION 4.0 – EXISTING SOLID WASTE MANAGEMENT

**Exhibit B – Beaufort County Convenience/Recycling Drop-Off Centers Location Map**



**Note:** Please refer to Table 4 on page twelve (12) of this Plan for corresponding names and locations for each illustrated convenience/recycling drop-off center.

## SECTION 4.0 – EXISTING SOLID WASTE MANAGEMENT

---

### 4.3 Solid Waste Transfer Stations

Solid waste transfer stations are combinations of structures, machinery, or devices at a place or facility where solid waste is taken from collection vehicles and placed in larger transport vehicles for movement to another solid waste management facility. Currently there are two permitted transfer stations located within Beaufort County both of which are small facilities located on Daufuskie Island.

1. Haig Point Transfer Station is located on Daufuskie Island, South Carolina. The facility is permitted to accept up to 15 tons per day of Class Three Waste.
2. The Melrose Transfer Station is located on Daufuskie Island, South Carolina. The facility is permitted to accept up to 15 tons per day of Class Three waste.

### 4.4 Solid Waste Processing Facilities

A solid waste processing facility is any combination of structures, machinery, or devices utilized to reduce or alter the volume, chemical, or physical characteristics of solid waste through processes (such as baling or shredding) prior to delivery of such waste to a recycling or resource recovery facility or to a solid waste treatment, storage, or disposal facility, and excludes collection vehicles. There are no permitted solid waste processing facilities in Beaufort County

### 4.5 Short Term Structural Fill

A short term structural fill is a very restricted temporary activity whereby hardened concrete, hardened asphaltic concrete, bricks, masonry blocks and land-clearing debris may (under a permit-by-rule) be disposed of in a area of one (1) acre or less for a period not to exceed twelve (12) months. Such sites must be registered and approved by SCDHEC but do not have to be consistent with this Plan.

## SECTION 4.0 – EXISTING SOLID WASTE MANAGEMENT

---

### 4.6 Class One Landfills (Land-Clearing Debris and Yard Waste)

Approvals to operate landfills for land-clearing debris and yard waste are issued by the SCDHEC under an existing statewide general permit for landfills. Class One landfills are used solely for the disposal of trees, stumps, wood chips, and yard waste generated from land-clearing activities. There are no Class One landfills permitted by the SCDHEC under the general permit to operate in Beaufort County

### 4.7 Class Two Landfill (Construction, Demolition, and Land-Clearing Debris Landfills & Certain Industrial Landfills)

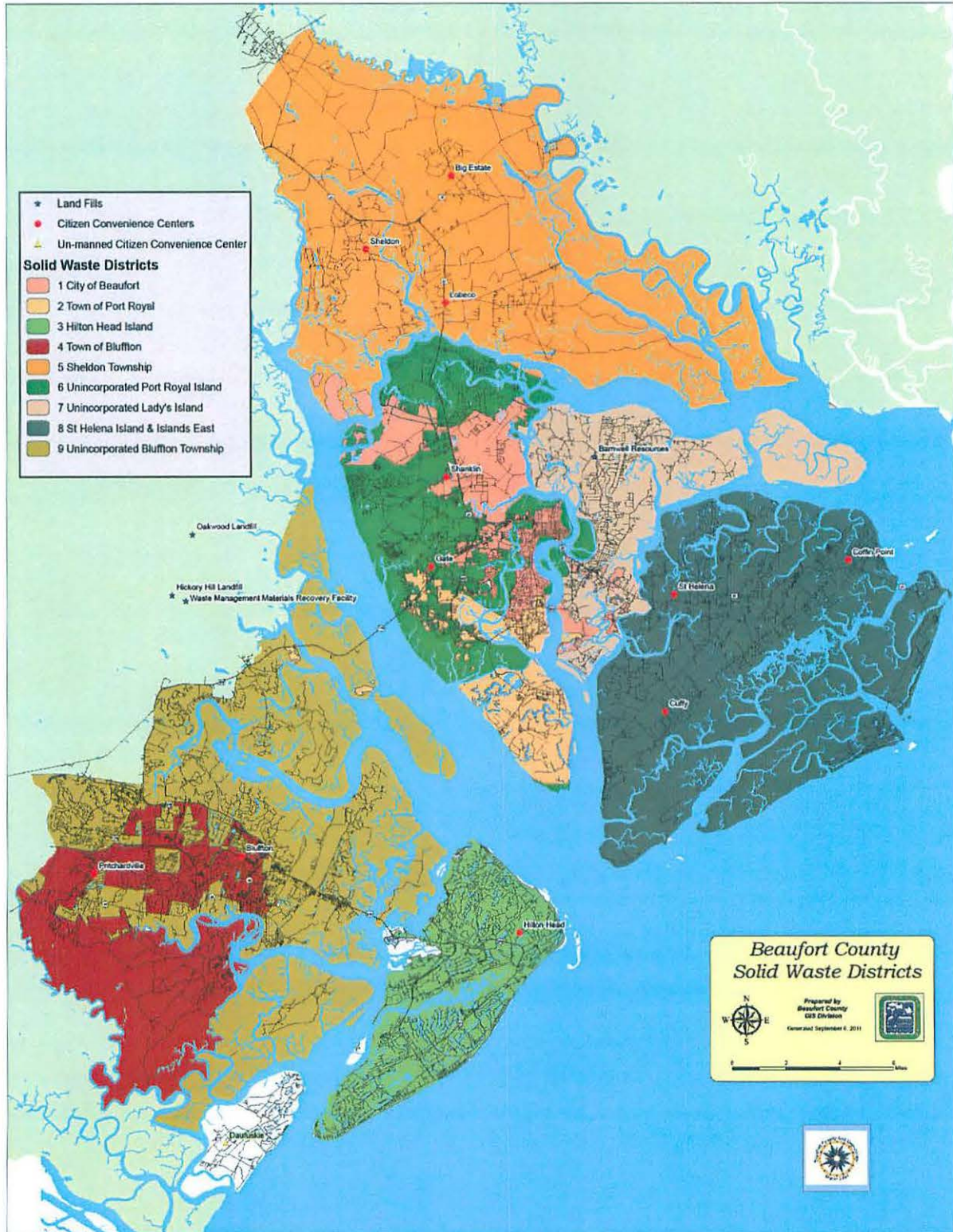
Class Two Landfills are designed to accept various inert wastes such as yard debris, Construction, Demolition, and Land-Clearing Debris (C&D) and similar industrial wastes. Currently there is one (1) permitted Class Two Landfills in Beaufort County, (please refer to Exhibit C).

1. Barnwell Resources, Inc. C&D Landfill is located at 490 Brickyard Point Road South in Lady's Island, South Carolina. The facility is a commercial facility owned and operated by Barnwell Resources, Inc. The facility is permitted to accept 156,000 tons of Class Two waste each year. For FY11, the landfill received approximately 17,045 tons of Class Two waste. Based on an annual rate of 17,045 tons the landfill has an estimated 50 years of additional operation life. The total Class Two waste generated in Beaufort County in FY11 was 61,081 tons. In addition to Barnwell Resources, Class Two waste generated within Beaufort County is also taken to Oakwood Landfill in Jasper County. For more information regarding the Beaufort County C&D Landfill contact:

**Mr. Benjamin Wheatley, Operations Manager**  
490 Brickyard Point Road South  
Beaufort, South Carolina 29385  
Phone: (843) 525-6137

# SECTION 4.0 – EXISTING SOLID WASTE MANAGEMENT

Exhibit C – Beaufort County Class Two Landfills Location Map



## SECTION 4.0 – EXISTING SOLID WASTE MANAGEMENT

---

### 4.8 Class Three Landfills (Municipal, Industrial, Sludge, Incinerator Ash)

A Class Three Landfill is one designed to receive wastes such as household waste, sludge, incinerator ash and certain industrial waste but is not a land application unit, surface impoundment, injection well, or waste pile. There are no active Class Three Landfills located within Beaufort County.

### 4.9 Solid Waste Incinerators

A solid waste incinerator is any engineered device used in the process of controlled combustion of waste for the purpose of reducing the volume, and/or reducing or removing the hazardous potential of the waste charged by destroying combustible matter leaving the noncombustible ashes, material, and/or residue. There are two solid waste incinerators currently located in Beaufort County. A permitted facility is in operation on Daufuskie Island which is privately operated by Daufuskie Site Preparation, Inc. and a facility in Bluffton, S.C. operated by Ulmer Brothers, Inc. which is currently not in permit.

### 4.10 Composting and Wood Chipping/Shredding Facilities

Composting facilities are utilized to provide aerobic, thermophilic decomposition of the solid organic constituents of solid waste to produce a stable, humus-like material. Wood grinding facilities operate similarly to composting facilities, but typically sell the mulch product before decomposition begins. There are no composting facilities in Beaufort County and four (4) wood grinding facilities are located in Beaufort County).

LCR Construction. In FY11 the facility accepted 3,552 tons. For more information on the LCR Construction Wood Grinding Operation contact:

**LCR Construction**  
Mr. Leland Rentz  
1503 Paris Avenue  
Beaufort, SC 29902  
Phone: (843)-522-3955



## SECTION 4.0 – EXISTING SOLID WASTE MANAGEMENT

---

Barnwell Resources, Inc. Land Clearing on Lady's Island, South Carolina. In FY11 the facility accepted 414 tons. For more information on the Barnwell Resources Wood Grinding Operation contact:

**Mr. Benjamin Wheatley, Operations Manager**

490 Brickyard Point Road South  
Beaufort, South Carolina 29907  
Phone: (843) 525-6137

Hilton Head P.O.A. Wood Chipping is located on Hilton Head Plantation Hilton Head Island, South Carolina. In FY11 the facility accepted 0.00 tons. For more information contact:

**Hilton Head Plantation Property Owners Association**

7 Surrey Lane  
Hilton Head Island, South Carolina 29926  
Phone: (843) 681-8800

Community Associates Wood Chipping Facility is located in Beaufort, South Carolina. In FY11 the facility accepted 21,300 tons. For more information contact:

**Community Associates**

175 Greenwood Dr.  
Hilton Head Island, South Carolina 29928  
Phone: (843) 671-1343

### **4.11 Used Oil Collection and Processing Facilities**

Used oil, oil filters, and oil bottles generated by residents of Beaufort County are collected at each of the County's convenience/recycling drop-off centers. The used oil collected at the sites is collected in tanks for Santee Cooper's Give Oil for Energy Recovery (GOFER) program. Santee Cooper collects the used oil when the tanks reach capacity and transports it to Santee Cooper's Jefferies Generating Station

---

## SECTION 4.0 – EXISTING SOLID WASTE MANAGEMENT

---

where the recycled oil is used for fuel to generate electricity. A private contractor collects the used oil filters from the collection facilities.

Currently, there are no permitted oil collection and processing facilities located in Beaufort County.

### **4.12 Waste Tire Haulers, Collection Facilities, Processing Facilities, and Disposal Facilities**

Waste tires generated in Beaufort County by residents are accepted at County Convenience Centers. The waste tires are collected at the centers and transported to our collection site. To accept tires from tire retailers, car dismantlers, etc. the County requires a tax receipt illustrating the SC Tire Fee was paid for the number and size of tires brought for recycling. They are held at the collection site for transport and recycling by SCDHEC registered haulers. No other permitted collection facilities, processing facilities, or disposal facilities are currently located in Beaufort County.

### **4.13 Research, Development, and Demonstration (RD&D) Permits**

Research, Development, and Demonstration (RD&D) Permits are issued for innovative and experimental solid waste management technologies and processes. No research, development, and demonstration permits are currently active for any solid waste facilities within Beaufort County.

### **4.14 Land Application of Solid Waste Permits**

Permits for the land application of solid waste establishes appropriate application rates, frequency of application, and monitoring requirements for the uniform surface spreading or mechanical incorporation of non-hazardous solid waste on or into soil that is being used for agricultural, silvicultural, and horticultural production. Land application of solid waste is a way to recycle South Carolina's resources and is not a means of waste disposal. No land application permits have been issued for any facility within Beaufort County.

## SECTION 4.0 – EXISTING SOLID WASTE MANAGEMENT

---

### 4.15 Recycling Programs

Beaufort County currently contracts with various companies for taking recyclable materials. Recyclables are collected at the referenced convenience/recycling drop-off centers and through curbside collection programs. Beaufort County promotes recycling as a countywide effort that involves some of its municipalities, commercial businesses, industries, independent solid waste collection companies, organizations, and the residents within Beaufort County. The concept is to make recycling as easy and simple as possible and reduce the amount of waste disposed of in landfills. Currently, all recycling programs within Beaufort County are voluntary.

As previously described, the referenced convenience/recycling drop-off centers in Beaufort County accept cardboard, glass, newspaper, plastic bottles, aluminum cans, lead acid batteries, used oil and used oil filters, anti-freeze, and paint. Used oil is collected in Santee Cooper GOFER tanks at the individual convenience/recycling drop-off centers. Santee Cooper empties the tanks on an as-needed basis and transports the used oil for recycling. Waste tires are accepted at the County Convenience Centers. The waste tires are collected at the centers and transported to the County collection/consolidation site. They are held at the collection site for transport and recycling by SCDHEC registered haulers.

### 4.16 Special Wastes

Special Waste is defined as commercial or nonresidential solid waste, other than regulated hazardous wastes, that are either difficult or dangerous to handle and require unusual management at MSW landfills. Special Waste includes but is not limited to pesticide wastes, liquid wastes, sludge, industrial process wastes, wastes from pollution control processes, residue or debris from chemical cleanups, contaminated soil from a chemical cleanup, containers and drums, and animal carcasses. Beaufort County does not accept special waste. Special waste is not currently accepted at the County's convenience/recycling drop-off centers.

## SECTION 4.0 – EXISTING SOLID WASTE MANAGEMENT

---

### 4.17 Household Hazardous Materials (HHM)

Household Hazardous Material (HHM) is defined as material found around the home, usually in small amounts, which can harm people or the environment. Examples of household hazardous materials include paint, pesticides, cleaning supplies, and batteries. Household hazardous materials are not regulated as hazardous materials by South Carolina law but are considered part of the Class Three waste stream. Beaufort County's Public Works department currently works with local citizen's groups to holds one-day events each year to collect HHM from residents. In addition, the Town of Hilton Head Island holds a collection event each year for their residents. Examples of HHM collected are:

- Batteries
- Consumer paint products
- Corrosives (such as oven cleaners and drain cleaners)
- Liquid fuels
- Domestic pesticides
- Pharmaceuticals (unused medications and hypodermic needles)
- Pressurized-flammable gas containers (such as propane BBQ tanks and single use tanks)
- Solvent and flammable liquids (such as gasoline, anti-freeze, and paint strippers)
- Swimming pool chemicals
- Consumer electrical and electronic equipment
- Products containing mercury (includes thermometers and fluorescent lighting)

### 4.18 Import and Export of Waste

Residential municipal solid waste (Class Three) generated inside the county is currently exported and managed at the previously referenced Hickory Hill Landfill

## SECTION 4.0 – EXISTING SOLID WASTE MANAGEMENT

---

located in Jasper County. In addition, as stated in Chapter 4.7, some Class Two waste is also exported and managed at Oakwood Landfill in Jasper County. However, per the Beaufort County Code (ARTICLE III, Section 62-28), the County does not accept waste generated outside of Beaufort County at County operated facilities.

### **4.19 Solid Waste Management Funding**

Beaufort County utilizes county taxes and state grants to fund solid waste and recycling activities. Large projects may be funded through municipal bonds and/or state/federal grants. Some municipalities assess a monthly solid waste management and recycling collection fee to fund their curbside collection programs. Beaufort County currently pays for the disposal of all residential waste. These sources of revenue have shown to be sufficient to fund all solid waste management operations for the County.

## SECTION 5.0 – Future Solid Waste Management

---

In general, there are three classifications for landfills in South Carolina:

- Class 1 landfills accept land-clearing debris;
- Class 2 landfills accept construction and demolition debris; and
- Class 3 landfills accept household garbage – or MSW.

Source: South Carolina Solid Waste Management Annual Report FY 2011

### 5.1 Waste Stream Projections

#### 5.1.1 Class One Waste (Land Clearing Debris and Yard Trash) -

Is disposed of at Class 2 landfills – Yard trimmings are defined as less than four feet in length and less than six inches in diameter. The county currently sends yard trimmings to a facility where it is ground into mulch and sold as boiler fuel. This practice is classified as recycling according to the state of South Carolina. The County recycled an estimated 6,627 (3,374) tons of Yard Trimmings in this manner in FY2011. The City of Beaufort and the Town of Port Royal collect yard waste in plastic bags that are disposed of in the Oakwood Class 2

landfill.

**5.1.2 Class Two Waste (Construction, Demolition, and Land Clearing and Industrial) -** According to the 2011 South Carolina Solid Waste Annual Report, the amount of Class Two Waste generated within Beaufort County for disposal in Class Two landfills was 61,081 tons.

Beaufort County's average Class Two waste generation rate of 3.64 pounds per person per day (p/p/d) was calculated based upon the three year period between FY09 - FY11. There is a general trend to divert demolition debris from disposal toward production of a recycled product. Beaufort County plans to explore these options.

**5.1.3 Class Three Waste (Municipal, Industrial, Sludge, Incinerator Ash) -** According to the 2011 South Carolina Solid Waste Management Annual Report, the amount of Class Three waste generated within Beaufort County for disposal at Hickory Hill landfill was 149,520 tons. This total includes both residential and

## SECTION 5.0 – Future Solid Waste Management

---

commercial tonnage. Beaufort County's average municipal solid waste generation rate of 5.40 p/p/d was calculated based upon the three year period between FY09 - FY11. Since the per person solid waste generation is based on the permanent population numbers, it is inflated, because of the large number of visitors and tourists that are in the County at resort areas on Hilton Head Island and the barrier islands during various seasons of the year.

Table 5 illustrates the Class Two and Class Three waste generation projections for the coming years (based on the average generation rate from FY06 - FY10, and the projected population).

**Table 5 – Beaufort County Waste Generation Projections (2015-2035)**  
(tons per total population per year)<sup>i</sup>

Year	Population	Waste Generation (tons)			
		Class Three	Class Two	Banned Materials	Electronics
2015	170,640	184,982	99,965	11,945	341.28
2020	185,220	200,788	108,507	12,954	370.44
2025	199,780	216,572	117,036	13,985	399.56
2030	215,270	233,363	126,111	15,069	430.54
2035	230,240	249,592	134,880	16,117	460.48

Source: Population Projections - SC Budget & Control Board, Office of Research & Statistics

### Banned Items

Banned Items are appliances, lead-acid batteries, used motor oil, whole tires and yard trimmings. With the exception of yard trimmings, these items are prohibited by law from disposal in any landfill. Yard trimmings are banned from disposal in Class III landfills, but can be disposed of in Class I and Class II landfills.

Source – SC DHEC FY11 Annual Solid Waste Report

## SECTION 5.0 – Future Solid Waste Management

---

It should be noted that although the electronics waste stream is broken out in the above chart, as of Fiscal Year 12 all electronics data will fall under banned materials in the SC DHEC Annual Solid Waste Reports. This is due to the SC State mandated electronics law that took effect in July 2011.

### **5.2 Collection, Temporary Storage, and Transportation of Solid Waste**

All solid waste facilities and equipment in Beaufort County are planned, designed, and operated as an integral function of this Plan. All facilities and equipment must be selected to ensure maximum efficiency for operations, proper locations for use by citizens and transportation cost, safety, and the lowest possible purchase price.

Beaufort County will strive to improve solid waste management and recycling technologies to minimize the amount of waste disposed of in landfills. Beaufort County will continue to utilize its convenience/recycling drop-off centers for the collection of Class Two (as previously described) and Class Three waste and recyclables. Beaufort County will continue to study and pursue implementation of curbside collection of waste and recyclables. The municipalities utilize curbside pick-up. Some private residential developments and individual citizens also contract for curb side pick-up.

In Beaufort County, garbage trucks transport waste to Hickory Hill Landfill. Most garbage trucks are designed for operation on paved roads. When full, they must either dump the solid waste at a landfill or a local transfer station. Due to the lack of a transfer station in Beaufort County, the trucks must transit the dirt road at the landfill site to the top of the hill where garbage is dumped and then compacted into the landfill. Transiting the roads to the top is rough on chassis and truck tires. In wet weather the road is often so muddy and slick that each truck must be winched to the top of the landfill to dump. All of these conditions result in increased maintenance costs for hauling companies and also increased hauling time. In comparison, a transfer station has a concrete tipping floor where trucks can drive in and dump in



## SECTION 5.0 – Future Solid Waste Management

---

just a few minutes in all weather conditions. Haulers are generally willing to pay a premium of several dollars per ton to tip at a transfer station.

### 5.2.1 Convenience Centers

**The 2010 Beaufort County Comprehensive Plan addresses the future of Convenience Centers as follows:**

#### **“CONVENIENCE CENTERS”**

Although the convenience center concept works well in rural communities, in high traffic areas there are limits to how much waste can be collected at satellite stations and transported to a landfill. This is partially due to the logistics of emptying and replacing waste containers. Under the current setup, the County is required to staff, maintain, manage collection, and pay for disposal of items from the convenience centers. Five of the 12 convenience centers – Hilton Head, Gate, Shanklin, St. Helena, Bluffton, and Lady's Island – account for 80 % of the convenience center traffic. For example, the number of vehicles visiting the Hilton Head convenience center has increased from about 175,000 in 2000 to over 350,000 vehicles (or 83 vehicles per hour) in 2006, a 50% increase in traffic.

The high traffic volume combined with the limited weekend hours of the landfill used by the County, over burdens the system on weekends. These factors create a constant challenge for County staff and Contractors to keep up with the volume of waste to be handled.

#### **Recommendation 11-25: Provide Curbside Collection in High Density Areas**

County Council should direct County staff to explore means of initiating mandated curbside pick-up for solid waste and recycling in Districts 6, 7, and 9; and encouraging the Town of Hilton Head to provide or require curbside pick-up.

- The County should explore an exclusive franchise system, allowing haulers to bid on servicing an entire Solid Waste District or a designated area within the Solid Waste District if not feasible for one hauler to service the entire district. This will help to reduce costs for citizens and decrease truck traffic in residential neighborhoods.
  - The County should work with the Town to explore the provision of mandatory franchised curbside and recycling collection administered by the Town of Hilton Head
  - The County should increase the efficiency and capacity of its high- usage convenience centers by installing trash compacting equipment to complement curbside collection.

## SECTION 5.0 – Future Solid Waste Management

---

Additionally, as curbside services are implemented across the County, services at Convenience Centers within these areas may be reduced / modified, providing for the combination/closure of some facilities.

## SECTION 5.0 – Future Solid Waste Management

---

### 5.3 Solid Waste Transfer Stations

A transfer station, as defined by the S.C. Solid Waste Policy and Management Act of 1991 (Act), is a combination of structures, machinery or devices at a facility where solid waste is taken from collection vehicles and placed in other transportation units, with or without reduction in volume, for movement to another solid waste facility. A transfer station can be designed to transfer or process recyclables as well as collect and properly manage materials that may be better managed outside the solid waste stream such as household hazardous waste, tires, used oil, and electronics. Beaufort County does not have access to a transfer station.

Currently, the County can only access a single landfill in an economically feasible way given the distance to all other disposal facilities and that landfill, Hickory Hill, has a limited capacity based on the estimated remaining life of the facility based on permitted disposal rate in years (8.4 years) and estimated remaining life of the facility based on current disposal rate in years (13.2) (SCSWM Annual Report FY2011). Without a transfer station to consolidate waste for longer distance transport, the only option for Beaufort County solid waste disposal is the Hickory Hill Landfill. Beaufort County has authorized several investigations into solutions for this issue. In 2005, R. W. Beck (now SAIC), Beaufort County's solid waste professional consulting firm, evaluated disposal options for the County including a cost analysis for transferring, hauling, and disposing of waste under each option. In 2010, the same firm performed an update of these activities:

## SECTION 5.0 – Future Solid Waste Management

---

### **Identify and interview potential facilities**

*Nine of fourteen landfills contacted expressed an interest in accepting solid waste from Beaufort County. One of the nine is Three Rivers Solid Waste Authority located near Aiken, SC. The Three Rivers Solid Waste Authority currently provides solid waste management services to local governments in Aiken, Allendale, Bamberg, Barnwell, Calhoun, Edgefield, Orangeburg, and Saluda counties (SCSWM Annual Report FY2010).*

### **Estimate range of capital costs associated with a 500 ton per day transfer station (182,500 T/yr)**

*Estimated total capital cost: High \$6,025,000; Low \$4,896,700 If financed over 20 years at 4 % interest, the annual cost of debt retirement at the high capital cost estimate would be \$443,330, or \$2.84/ton. The annual cost of debt retirement at the low capital cost estimate of \$4,896,700 at the same terms would be \$360,308 or \$2.31/ton.*

### **Estimate range of cost per ton for a transfer, haul, and disposal scenario, including financing costs of capital.**

*Projected costs associated with development and operation of a single 500 ton/day facility, including transportation to and disposal at the Three Rivers Solid Waste Authority landfill and payback on the loan for capital costs. High estimate is \$53.09/ton and the low estimate results in a cost of \$46.24/ton.*

Full-cost disclosure is defined as the local government's total cost for operating a solid waste program. Costs reported include expenditures for all activities related to collecting, disposing of and recycling solid waste. Utilization of Beck's transfer station cost estimates shows that the addition of a transfer station would increase the total cost per capita by approximately \$3.76. Beaufort County's FY10 Full Cost Disclosure report shows total cost per capita at \$28.59 in FY10, The addition of a transfer station using Beck's estimate and FY10 report data would increase per capita cost to \$32.35. The addition of a transfer station would give Beaufort County flexibility regarding disposal of solid waste and offer haulers a more efficient way to dump their loads in inclement weather. This would result in a 13% increase in cost per capita for solid waste disposal, but solve some serious environmental problems that will be coming within a twenty year time frame. Beaufort County's only option for disposal without the addition of a transfer station is Hickory Hill Landfill, which has a limited capacity based on both the estimated remaining life of the facility based on

## SECTION 5.0 – Future Solid Waste Management

---

permitted disposal rate in years (8.4 years) and estimated remaining life of the facility based on current disposal rate in years (13.2) (SCSWM Annual Report FY2011). To manage waste, Beaufort County plans to site, permit and construct a transfer station of suitable capacity to handle waste streams for the next 20 years.

### 5.4 Solid Waste Processing Facilities

According to SCDHEC, a “solid waste processing facility”, means a combination of structures, machinery, or devices utilized to reduce or alter the volume, chemical, or physical characteristics of solid waste through processes, such as baling or shredding, prior to delivery of such waste to a recycling or resource recovery facility or to a solid waste treatment, storage, or disposal facility and excludes collection vehicles. Installation of one or two transfer stations and expanded curbside pick-up would need to occur prior to the County’s consideration of installation or support of a solid waste processing facility. Beaufort County does not have any existing facilities or plans to install one within the next 20 years.

### 5.5 Class One Landfills (Land-Clearing Debris and Yard Trash)

As described in Section 4.6, there are no Class One Landfills (Land-Clearing Debris and Yard Waste) operating in Beaufort County. Land-clearing debris and yard waste generated within the County either goes to existing Class Two landfills or is ground and sold as boiler fuel or mulch. Beaufort County’s preference is to recycle these materials and will continue to explore opportunities to do so. Beaufort County does not foresee the need or plan to construct a class one landfill within the next 20 years.

### 5.6 Class Two Landfills (Construction, Demolition, and Land-Clearing Debris and Industrial Waste)

As described in section 4.7, Beaufort County hosts one privately owned Class Two Landfill. That landfill, Barnwell Resources, has an estimated 50 years of additional operational life. The County also disposes of Class 2 waste at the Oakwood Landfill located in Jasper County. The two existing landfills should provide sufficient capacity

## SECTION 5.0 – Future Solid Waste Management

---

to handle the projected disposal for the planning period. There is a general trend to divert Class Two waste containing construction/demolition debris (C & D) from disposal toward production of a recycled product. Beaufort County plans to explore opportunities and the facilities needed to recycle C & D for this 20 year plan.

### 5.7 Class Three Landfills (Municipal, Industrial, Sludge, Incinerator Ash)

Currently Beaufort County's Class 3 waste is disposed of at the Hickory Hill Landfill located in Jasper County. According to the 2010 SCDHEC Solid Waste Management Annual Report, the estimated remaining life of the Hickory Hill Landfill based on permitted and current disposal rate is 5.3 to 8.3 years. Because of this, Beaufort County needs to secure another outlet for waste disposal within a short timeframe (2 to 3 years).

As mentioned previously in Section 5.3, Solid Waste Transfer Station, Beaufort County can only access a single landfill in an economically feasible way given the distance to all other disposal facilities. Without a transfer station to consolidate waste for longer distance transport, the only option for Beaufort County solid waste disposal is the Hickory Hill Landfill.

The Act states that a county has "the responsibility and authority to provide for the operation of solid waste management facilities to meet the needs of all incorporated or unincorporated areas of the county." The stated purpose of the Act is to provide for solid waste management in the "most environmentally safe, economically feasible and cost-effective manner." To this end the County has concluded that the most prudent long range plan is to site a transfer station either in Beaufort County, if possible, or a neighboring county. A transfer station is safe environmentally, because garbage trucks will be able to dump their loads in all types of weather, allow for year round collection of household hazardous wastes, and add flexibility to utilize more than one landfill that has a limited remaining life. The cost analysis will require a cost increase of approximately 10-15% per capita which is reasonable when the alternative is no disposal options. In order to address the potential lack of Class Three Landfill space, Beaufort County's best option is to create access to a transfer

## SECTION 5.0 – Future Solid Waste Management

---

station. Once the transfer station is operable, Beaufort County plans to pursue Class 3 waste disposal at landfills providing the lowest cost alternatives over the 20 year planning period.

### 5.8 Solid Waste Incinerators

Beaufort County currently has no operating municipal solid waste incinerators. There are two air curtain incinerators operating to incinerate land clearing debris. They are privately owned facilities one located on Daufuskie Island and one in Bluffton. Because of both environmental and cost concerns relating to municipal solid waste incinerators, the County has concluded that a better solution to our limited disposal capacity at the Hickory Hill Landfill, is to create access to a transfer station. Therefore, no new municipal solid waste incinerators will be necessary to fulfill the capacity requirements of the County.

### 5.9 Composting and Wood Chipping/Shredding Facilities

Four (4) permitted and privately owned wood grinding facilities are located in Beaufort County. In FY11 the facilities accepted approximately 25,266 tons. These facilities provide sufficient capacity to the County for the planning period and beyond. Therefore, current wood chipping and composting facilities are sufficient to fulfill the capacity requirements of the County. New composting and chipping facilities will be considered that increase current recycling options for this waste stream on a case by case basis.

### 5.10 Used Oil Collection and Processing Facilities

Used oil, oil filters, and oil containers generated by residents of Beaufort County are collected at each of the County's convenience/recycling drop-off centers. The used oil collected at these sites is collected in tanks for Santee Cooper's Give Oil for Energy Recovery (GOFER) program. Santee Cooper collects the used oil when the tanks reach capacity and transports it to Santee Cooper's Jefferies Generating Station where the recycled oil is used for fuel to generate electricity. A private

## SECTION 5.0 – Future Solid Waste Management

---

contractor collects the used oil filters from the collection facilities. The County intends to manage this waste in the same or a similar manner in the future. No new permitted Used Oil Collection and Processing Facilities will be necessary to fulfill the capacity requirements of the County.

### **5.11 Waste Tire Haulers, Collectors, Processing Facilities, and Disposal Facilities**

Waste tires generated by residents in Beaufort County are accepted at County Convenience Centers. The waste tires are collected at the centers and transported to a permitted central collection site, the Beaufort County Tire/Baler Building. The waste tires are then transported for recycling by SCDHEC registered haulers. The county intends to continue to manage waste tires in this manner. Waste tires from commercial retailers are currently not received at the permitted collection facility and tires from commercial retailers are not accepted at County Convenience Centers. No permitted waste tire processing facilities or disposal facilities are currently located in Beaufort County. With sufficient management capacity, no new Waste Tire Collectors, Waste Tire Processing Facilities, or Waste Tire Disposal Facilities will be necessary to fulfill the capacity requirements of the County for the planning period.

### **5.12 Research, Development, and Demonstration (RD&D) Permits**

RD&D projects will be considered on a case by case basis to meet the county's solid waste management requirements during the planning period.

### **5.13 Land Application of Solid Waste Permits**

Beaufort County currently has no operating Land Application from Solid Waste Facilities. None will be needed to fulfill the solid waste management requirements of the County during the planning period.

### **5.14 Recycling Programs**

Beaufort County plans to continue its recycling programs through the use of its convenience/recycling drop-off centers and all other means possible. A curbside



## SECTION 5.0 – Future Solid Waste Management

---

recycling program exists in the City of Beaufort, Town of Port Royal, Town of Bluffton, and The Town of Hilton Head offers a franchised hauler as a curbside recycling option. Because curbside pick-up is the most convenient method of recycling, and the public is more likely to recycle based on convenience. In areas where the population density is high enough, the County will pursue initiation of mandatory curbside recycling. Beaufort County will continue to educate its residents on the importance of recycling.

For FY11, citizens of the County disposed of 4.2 p/p/d of defined MSW compared to the statewide average of 3.6p/p/d. Additional recycling would be desirable since the current disposal rate must be decreased in the amount of 0.6 p/p/d in order to meet the state goal of 3.5 p/p/d.

Beaufort County will seek to expand its public education programs to make citizens, commercial businesses, retailers, etc. more aware of the need to reduce waste and about the opportunities that exist for recycling. Access to a transfer station will not only allow for more flexibility in waste handling and disposal options, but will also enable workers to screen incoming wastes to separate out readily recyclable materials. The option of including a Materials Recycling Facility or a recyclable processing area will be considered for inclusion with the construction of a transfer station. This would enable the County to market it's recyclables according to the most economical practices available.

### 5.15 Special Wastes

As mentioned in Chapter 4, Special Waste is defined as commercial or nonresidential solid waste, other than regulated hazardous wastes, that are either difficult or dangerous to handle and require unusual management at MSW landfills. Special Waste includes but is not limited to pesticide wastes, liquid wastes, sludge, industrial process wastes, wastes from pollution control processes, residue or debris from chemical cleanups, contaminated soil from a chemical cleanup, containers and

## **SECTION 5.0 – Future Solid Waste Management**

---

drums, and animal carcasses. Beaufort County does not accept special waste. Special waste is not currently accepted at the County's convenience/recycling drop-off centers.

### **5.16 Household Hazardous Materials (HHM)**

Beaufort County's Public Works department currently works with local citizens' groups to hold one-day events each year to collect HHM from residents. In addition to the yearly one-day events, paint is collected at the convenience centers. The option of including HHM collection facilities will be considered for inclusion with the construction of a transfer station, allowing for year round collection of materials such as paint, pesticides, cleaning supplies, and batteries.

### **5.17 Import and Export of Waste**

Per the Beaufort County Code (ARTICLE III, Section 62-28), the County does not accept waste generated outside of Beaufort County at County operated facilities.

### **5.18 Storm Debris Management**

Beaufort County has a Debris Management Plan to guide the County during major storm events. Due to the size of the document it is not included in this Plan. The Debris Management Plan is maintained by the Beaufort County Solid Waste Manager at the Solid Waste and Recycling Section of Public Works.

## SECTION 6.0 – GOALS, POLICIES, STRATEGIES, AND BARRIERS

---

### 6.1 Reduction

In June 2000, the solid waste management goals outlined in the Solid Waste Policy and Management Act of 1991 were revised as follows:

“It is the goal of this State to reduce, on a statewide per capita basis, the amount of MSW being received at municipal solid waste landfills to 3.5 pounds per day not later than June 30, 2005.”

In addition, the following definition was amended stating:

“MSW includes, but is not limited to, wastes that are durable goods, nondurable goods, containers and packaging, food scraps, yard trimmings, and miscellaneous inorganic wastes from residential, commercial, institutional, and industrial sources including, but not limited to, appliances, automobile tires, old newspapers, clothing, disposable tableware, office and classroom paper, wood pallets, and cafeteria wastes. MSW does not include solid wastes from other sources including, but not limited to, construction and demolition debris, auto bodies, municipal sludge, combustion ash, and industrial process wastes that also might be disposed of in municipal waste landfills or incinerators.”

For FY11, citizens of the County disposed of 4.2 p/p/d of defined MSW compared to the statewide average of 3.6 pounds per day. In order for Beaufort County to meet the 3.5 p/p/d reduction goal, County residents in conjunction with businesses and organizations must reduce the amount of defined MSW generated within the County for disposal. Methods that will be used to promote source reduction include speaking engagements, tours of solid waste and recycling facilities, newspaper articles, radio and TV commercials, and displays. A continued educational effort in source reduction is anticipated to decrease the amount of waste transported for disposal in landfills.

## **SECTION 6.0 – GOALS, POLICIES, STRATEGIES, AND BARRIERS**

---

The public must become better informed of the benefits of recycling and the various ways in which residents can help in this endeavor. By separating out a greater percentage of recyclable aluminum, paper, cardboard, plastic, and glass, Beaufort County's waste stream can be greatly reduced.

### **6.2 Recycling**

The South Carolina Solid Waste Policy and Management Act of 1991 mandated a 25% recycling goal, calculated by weight, based on a per capita waste generation rate. In June 2000, the solid waste management goals were revised as follows:

“It is the goal of this State to recycle, on a statewide basis, at least thirty-five percent (35%), calculated by weight, of the MSW stream generated in this State no later than June 30, 2005.”

For Fiscal Year 2011 the County recycled 23.7% of the defined Class Three waste generated in the County compared to the statewide average of 27.7%. Markets drive recycling efforts and too often adversely impact those efforts. To meet the 35% goal, public education will be utilized to inform residents of recycling programs being implemented within Beaufort County and the best way for each resident to participate. An informed public is more likely to recycle than an uneducated public. Beaufort County will place a larger emphasis on recycling with commercial businesses, retailers, etc. in an effort to increase the County's overall recycling rate. Beaufort County will continue to develop and distribute literature that focuses on recycling and its importance to the environment.

### **6.3 Educational Programs**

A public education program is to inform the public, students, key decision makers and community representatives about current solid waste management practices, the need for waste reduction and recycling activities and future solid waste management

---

## **SECTION 6.0 – GOALS, POLICIES, STRATEGIES, AND BARRIERS**

---

plans in order to institute positive changes as needed. The program should modify and change habits regarding solid waste with a continuous ongoing campaign.

All educational efforts will target the residents of Beaufort County with an emphasis on the collection service area residents and drop-off/recycling center customers. The method of educational delivery will be through local media, radio and newspaper, small group presentations, exhibits, displays, and demonstrations. Educational leaflets will be distributed where applicable (such as convenience stations, public buildings, and through curbside collection companies). In addition, information regarding Beaufort County's solid waste recycling program can be obtained from the County's website:

<http://www.bcgov.net/recycle>

All educational programs will be evaluated and revised according to the change in residents' behavior as indicated by the Class Three waste stream reduction and increase in the collection of recyclable material. Recycling and source reduction for businesses and industries will be conducted and promoted through the overall education program.

The South Carolina Office of Solid Waste Reduction and Recycling was created by the Solid Waste Policy and Management Act of 1991 and is part of the Division of Mining and Solid Waste Management. The Office of Solid Waste Reduction and Recycling, in accordance with the Act, provides educational, technical, and grant assistance to local governments, schools, colleges, and universities and the public regarding solid waste management issues. Beaufort County has and will continue to work with the Office of Solid Waste Reduction and Recycling to obtain assistance with their public education campaign and grant program.

## SECTION 6.0 – GOALS, POLICIES, STRATEGIES, AND BARRIERS

---

### 6.4 Technical Assistance

Contacts for information concerning solid waste management, recycling, and source reduction in Beaufort County are as follows:

**Mr. Jim Minor, Solid Waste Manager**

Beaufort County  
Public Works North  
120 Shanklin Rd.  
Beaufort, SC  
Phone: (843) 255-2735  
E-mail: [jminor@bcgov.net](mailto:jminor@bcgov.net)

**Mrs. Carol Murphy, Recycling Coordinator**

Beaufort County  
Public Works North  
120 Shanklin Rd.  
Beaufort, SC  
Telephone: (843) 255-2734  
E-mail: [cmurphy@bcgov.net](mailto:cmurphy@bcgov.net)

## **SECTION 7.0 – REVISION AND CONSISTENCY WITH WASTE MANAGEMENT PLANS**

---

### **7.1 Annual Progress Reports**

Section 44-96-60 of the Act requires SCDHEC to submit to the Governor and General Assembly a comprehensive report on solid waste management in South Carolina, by March 15 of each calendar year. Therefore, SCDHEC requires each county or region to submit an Annual Progress Report to the Department by October 1 of each year. The Annual Progress Report shall contain information as may be requested by the Department but must contain, at a minimum, the following:

- Any revisions to the Solid Waste Management Plan previously submitted by the county;
- The amount, type, and percentage of materials that were recycled, if any, during the previous year;
- The percentage of the population participating in various types of source separation, recovery, or recycling activities during the previous year; and
- A description of the source separation, recovery, or recycling activities or all of the above activities attempted, if any, their success rates, the reasons for their success or failure, and a description of such activities, which are ongoing.

### **7.2 Revisions to the Beaufort County Solid Waste Management Plan**

Section 44-96-80(E) of the Act states that all solid waste management plans shall be consistent with the South Carolina Solid Waste Management Plan, provisions of state law and regulations promulgated by the Department for the protection of public health and safety and the protection of the environment.

The Beaufort County Solid Waste Management Plan will be reviewed annually and revised as needed by the Beaufort County Solid Waste and Recycling Board and the Beaufort County Administrator, and approved by County Council. Revisions to the

## **SECTION 7.0 – REVISION AND CONSISTENCY WITH WASTE MANAGEMENT PLANS**

---

Solid Waste Management Plan will be conducted to keep this document as an up-to-date planning and communication tool so that the general public is kept abreast of solid waste issues affecting Beaufort County. Revisions to this Plan must be submitted by the Beaufort County Solid Waste and Recycling Board and approved by the Beaufort County Council through a resolution. The effective date of the revisions to the Plan will be the date of the resolution. Any revisions made to the Beaufort County Solid Waste Management Plan shall be submitted to SCDHEC. The Department may accept revisions to the Plan only from the County Administrator.

### **7.3 Determining Consistency with County Solid Waste Management Plan**

A permit applicant must submit a request for a consistency determination through SCDHEC. All correspondence regarding consistency sent to the County shall be forwarded to the Beaufort County Administrator. Only the Beaufort County Administrator may comment to SCDHEC regarding all consistency correspondence.



## SECTION 8 – FULL COST DISCLOSURE

---

### 8.1 Beaufort County Solid Waste Full Cost Disclosure

Beaufort County utilizes county taxes to fund the solid waste and recycling activities. In accordance with the Act of 1991, Beaufort County shall annually determine the full cost for solid waste management services. The County shall publish a notice by October 1, in a newspaper of general circulation, setting forth the full cost to all users, on an individual basis, of its solid waste management services for the previous Fiscal Year. Please refer to Table 6 for the full cost disclosure based on the Fiscal Year 2011 Budget.

**Table 6 – Beaufort County Solid Waste Full Cost Disclosure (FY11)**

Item	Amount (\$)
Total Net Cost	4,637,955
Population	162,233
Cost Per Capita	28.59

Source: SCDHEC Fiscal Year 2011 Solid Waste Management Annual Report

# APPENDIX A - BEAUFORT COUNTY SC ORDINANCE

## CHAPTER 62 SOLID WASTE MANAGEMENT PLAN

---

### **Sec. 62-1. - Administration.**

The Beaufort County Director of Public Works shall be responsible for the administration of the provisions of this chapter. These provisions shall only be applicable to the unincorporated area of the county and all county solid waste facilities, including county solid waste facilities located within the boundary of a municipality. The director may request assistance from the various departments and other officials of the county or municipalities, as may be necessary for the orderly implementation of this chapter. Regulations promulgated to carry out this chapter shall be subject to prior review and approval of county council.

*(Ord. No. 2007/37, 10-22-2007)*

### **Sec. 62-2. - Authority.**

(a)

*Authority and purpose.* Beaufort County ("the county") shall provide for the management, collection and disposal of solid waste. The landfills are established pursuant to the authority conferred by S.C. Code 1976, §§ 44-55-1010 through 44-55-1060, as amended, S.C. Code 1976, §44-1-140(11), as amended, and Section 9, Part II, Act No. 410 of 1971 also South Carolina Regulation PC-SW-2, and for the public health, welfare and safety of the citizens of the county. The rules and regulations herein are adopted along with all other South Carolina department of health and environmental control rules and regulations. All recycling and solid waste activities not in the county system shall coordinate with the county for the purpose of assisting the county with achievement of established state diversion and recycling goals.

(b)

*General.* Section 9 of the General Appropriations Act (Act No. 410) South Carolina Solid Waste Management and Policy Act of 1991, assigns the South Carolina State Board of Health as "the agency over these matters involving real or potential threats to the health of the people of South Carolina, including the handling and disposal of garbage and refuse . . ." Improper storage, collection and transportation systems create health hazards, odors, impair the aesthetic appearance of the State, encourage wild and domestic animal feeding and exposes residents to undue risks. Section 44-96-20 of the South Carolina Solid Waste Management and Policy Act of 1991, establishes goals for solid waste diversion from municipal solid waste (MSW) landfills and recycling on a statewide basis, and confer upon counties the responsibility for establishing solid waste management plans, including ordinances, policies and regulations, which support the achievement of the established waste reduction goal to reduce the amount of MSW disposed of to three and one-half pounds per/person/day and the 35-percent statewide recycling goal by 2005.

*(Ord. No. 2007/37, 10-22-2007)*

### **Sec. 62-3. - Definitions.**

For the purpose of this chapter, any definitions contained herein shall apply unless specifically stated. In addition to the definitions contained in this chapter, the articles of this chapter adopt by reference the definition of terms (to the extent they are not inconsistent with definitions specifically contained herein) defined in the South Carolina Solid Waste Policy and Management Act of 1991, S.C. Code § 44-96-10, et seq. and in any regulations promulgated pursuant thereto. Any term not specifically defined shall be construed pursuant to its plain and ordinary meaning. When not inconsistent with the context, words used in the present tense include the future, words used in the plural include the singular, and words used in the singular include the plural. The word "shall" is always mandatory and not merely discretionary.

## APPENDIX A - BEAUFORT COUNTY SC ORDINANCE CHAPTER 62 SOLID WASTE MANAGEMENT PLAN

---

*Agricultural operation:* Raising, harvesting, or storing crops or feed, breeding or managing livestock, including the preparation of the products raised thereon for human use and disposed of by marketing or other means. It includes, but is not limited to, agriculture, grazing, horticulture, forestry, and dairy farming.

*Apartment:* Any building containing more than four contiguous dwelling units or any group of buildings or mobile homes located on a single lot that contains a total of six or more dwelling units owned by the same person.

*Backyard composting:* The on-site composting of yard waste by the owner or tenant for nonrevenue generating use when all materials are generated and composted on-site.

*Bulk container:* A manufactured container suitable for emptying by mechanical equipment that has been approved by the director.

*Bulky items:* Household furniture, electronic appliances such as televisions, stereos, lawn mowers, door and window screens, swing sets, over-sized children's toys, metal tables and chairs, grills, yard furniture, wading pools, or other items generated by a household as part of its solid waste.

*Code:* The Code of Ordinances of Beaufort County, South Carolina.

*Collector/hauler:* Any individual, business, or municipal organization which collects solid waste or recyclable material commercially or as a public service and transports it to a permitted solid waste facility, landfill or recycling center.

*Combined waste stream:* The aggregate waste stream of all tenants or occupants of a business property or complex.

*Commercial establishment:* Any hotel, motel, apartment, rooming house, business, industrial, public or semipublic establishment of any nature.

*Commercial waste:* solid waste (including unrecovered recyclable materials) generated by industrial, commercial or business activities. This includes solid waste generated within multifamily residences and all solid waste placed in public receptacles on public streets, parks and playgrounds, beaches and other public places (excluding industrial waste as defined herein).

*Compost:* Humus-like end product of the process of composting waste.

*Composting:* The process of making compost.

*Composting facility:* Any facility used in the composting of yard waste and land-clearing debris and/or chipped untreated wood waste, thereby providing aerobic, thermophilic decomposition of the solid organic constituents of solid waste to produce a stable, humus-like material.

*Construction:* Any physical modification to the site at which a potential or proposed solid waste management facility is to be located including, but not limited to, site preparation, clearing, grading, excavation, construction of buildings, installation of liners, etc.

*Construction and demolition debris:* Any discarded solid wastes resulting from construction, remodeling, repair, and demolition of structures, and road construction. The wastes include, but are

# APPENDIX A - BEAUFORT COUNTY SC ORDINANCE

## CHAPTER 62 SOLID WASTE MANAGEMENT PLAN

---

not limited to, bricks, concrete, other masonry materials, lumber, road spoils, and paving materials, but do not include solid waste from agricultural operations.

*Contractor:* The person that has entered into a contract with the county to perform solid waste collection. See also "Franchise collector."

*County:* Beaufort County, South Carolina.

*County administrator:* The Beaufort County Administrator or his/her designated agent.

*County council:* The governing body of Beaufort County, South Carolina.

*Convenience center:* Any county authorized site designated for collection of residential solid waste, yard waste, bulky items, waste oil and other designated solid waste or recyclable materials. Convenience centers are intended as MSW collection sites for residential generated MSW generated within the solid waste district in which the convenience center is located.

*Debris:* Includes, but not limited to, equipment, yard toys, furniture, packaging items, shipping containers, construction and demolition waste, bricks, blocks, concrete, asphalt, metals, lumber, trees, tree limbs, tree stumps, brush or parts thereof, or brush stumps, and/or building materials that are determined to be potentially deleterious to good health, public sanitation and/or public safety.

*DHEC:* The South Carolina Department of Health and Environmental Control.

*Director:* Beaufort County Director of Public Works or his/her designated agent.

*Disposal:* The discharge, deposition, injection, dumping, spilling, or placing of any solid waste into or on any land or water, so that the substance or any constituent thereof may enter the environment or be emitted into the air or discharged into any waters, including groundwater.

*Dwelling unit:* One or more habitable rooms that are intended to be occupied by one family with facilities for living, sleeping, cooking and eating and from which the county would collect refuse (excludes commercial establishments).

*Expand or expansion:* Any change to a solid waste management facility including a composting facility or change in the status of that facility that:

(1)

Allows or results in an increase in the solid waste disposal capacity for the facility (including either lateral or vertical expansion capacity); or

(2)

Allows or results in an increase (or potential increase) in the annual disposal rate, tonnage limit and/or capacity limit for the facility; or

(3)

Includes or otherwise involves the purchase of additional property that may be utilized for solid waste management of any kind at the facility.

*Fiscal year:* A twelve-month period from July 1 of the current year to June 30 of the following year.

# APPENDIX A - BEAUFORT COUNTY SC ORDINANCE

## CHAPTER 62 SOLID WASTE MANAGEMENT PLAN

---

*Franchise collector:* The person that has entered into a franchise agreement with the county to perform solid waste collection and/or recycled materials.

*Garbage:* All accumulations of animal, fruit or vegetable matter that attend the preparation, use, cooking and dealing in, or storage of meats, fish, fowl, fruit, vegetables and any other matter of any nature whatsoever which is subject to decay, putrefaction and the generation of noxious and offensive smells or odors, or which during and after decay may serve as breeding or feeding material for flies and/or germ-carrying insects or vermin; items which due to their ability to retain water can serve as a breeding place for mosquitoes and other water-breeding insects.

*Groundwater:* Water beneath the land surface in the saturated zone.

*Hazardous wastes:* Wastes that are defined as hazardous in Section 44-56-20 of the South Carolina Hazardous Waste Management Act.

*Household:* A person or group of people who occupy a dwelling unit as their usual place of residence.

*Household hazardous waste:* Any commonly used household hazardous material that is not regulated as hazardous waste when disposed of. This includes, but is not limited to, insecticides, pesticides, paints, lubricants, fertilizers, cleaning agents and polishing compounds. For purposes of this definition, household hazardous waste does not include gasoline or motor oil.

*Household quantities:* Quantities of solid waste reasonably generated in the course of typical domestic activities from single-family residential dwelling units or from small residential building projects that consist of minor renovations to a dwelling unit. Solid wastes from construction projects that require a building permit or evictions of tenants are not considered household quantities. The fact that waste is generated from a single-family primary residence does not necessarily establish household quantities.

*Industrial waste:* Any and all solid waste generated from industrial processes including, but not limited to, factories and treatment plants.

*Land-clearing debris:* Organic waste such as trees, limbs, brush, and stumps mingled with small amounts of dirt that is produced as a result of clearing and grubbing operations.

*Landfill:* A disposal facility or part of a facility where solid waste is placed in or on land, and which is not a land treatment facility, a surface impoundment, or an injection well.

*Litter:* Any and all solid waste including, but not limited to, debris, disposable packages or containers, cigarette butts, garbage, ashes, rubbish, paper, junk, building materials, glass or plastic bottles, glass, cans or any other discarded or abandoned material. Any material or product that escapes control of the person operating a vehicle and is henceforth abandoned shall be considered litter. Litter is typically considered to be relatively small quantities of solid waste.

*Modify or modification:* Any change to a solid waste management facility or change in the status of that facility that:

(1)

Is considered a modification (major or minor) by DHEC; or

---

## APPENDIX A - BEAUFORT COUNTY SC ORDINANCE CHAPTER 62 SOLID WASTE MANAGEMENT PLAN

---

- (2) Requires a modification of any kind to the facility's operating permit issued by DHEC; or
- (3) Involves construction, renovation and/or other changes to existing buildings, structures or units, other than normal daily operating changes; or
- (4) Results in a different classification, designation and/or use for a solid waste management facility or composting facility; or
- (5) Results in a change of ownership and/or operation of a solid waste management facility or composting facility; or
- (6) Results in any addition and/or deletion of a waste stream for a significant user of a solid waste management facility or composting facility.

*Multiresidential units:* residential properties that consist of dwelling units classified by the county assessor as having more than one dwelling unit per property or parcel. This definition includes, but is not limited to, apartments and mobile home parks with multiple units where aggregate collection of municipal solid waste (MSW) is provided as part of a rental agreement.

*Owner/operator:* The person who owns the land on which a solid waste management facility or composting facility is located or the person who is responsible for the overall operation of the facility, or both.

*Person:* An individual, partnership, copartnership, cooperative, association, firm, company, public or private corporation, political subdivision, agency of the state, agency of the federal government, trust, estate, joint structure company or any other legal entity or its legal representative, agent or assigns.

*Pickup truck:* A motor truck with a manufacturer's gross vehicle weight rating of less than 11,500 pounds, an unladen weight of less than 8,001 pounds, and which is equipped with an open box-type bed less than nine feet in length. Pickup truck does not include a motor vehicle, otherwise meeting the above definition that is equipped with a bed-mounted storage compartment commonly called a utility body.

*Primary residence:* Residential dwelling unit that is occupied by the owner or renter of such unit. For purposes of this chapter, owners and renters shall designate only one primary residence.

*Recyclable material:* Those materials which would otherwise become municipal solid waste, and which can be collected, separated or processed and returned to the economic mainstream in the form of raw materials or products.

*Refuse:* Any solid waste, as defined herein, originating from typical household activities.

*Residential property:* Property that contains one or more residential dwelling units other than those defined as apartments.

## APPENDIX A - BEAUFORT COUNTY SC ORDINANCE CHAPTER 62 SOLID WASTE MANAGEMENT PLAN

---

*Residential solid waste:* Any and all accumulations of solid waste (including unrecovered recyclable materials) generated by single-family residential units or multifamily residential facilities where aggregate garbage collection is not provided to the tenant as part of a rental agreement.

*Roll cart:* Refuse containers, mounted on wheels, which are used to store refuse between collections by franchise collectors.

*Single-family residential unit:* Residential properties classified by the county assessor as having only one dwelling unit per property or parcel.

*Solid waste management plan:* The local solid waste management plan that must be developed and implemented by each county pursuant to S.C. Code § 44-96-80.

*Solid waste:* Garbage, debris, commercial waste, industrial waste, yard waste, white goods, ashes, rubbish, paper, junk, building materials, glass or plastic bottles, other glass, cans and any other discarded or abandoned material, including solid, liquid, semisolid or contained gaseous material. For purposes of the chapter, any waste specifically regulated under any state or federal law shall be excluded from the definition of solid waste.

*Solid waste management facility:* Any solid waste disposal area (including public and private landfills), volume reduction plant; transfer station, convenience center, or other facility, the purpose of which is the storage, collection, transportation, treatment, utilization, processing, recycling, or disposal, or any combination thereof, of solid waste. For purposes of this chapter, this term does not include composting facilities, or noncommercial industrial facilities managing solid waste generated in the course of normal operations on property under the same ownership or control as the waste management facility.

*Special waste:* Bulky refuse that cannot be stored in roll carts and cannot be picked up by a normally used refuse collection vehicle.

*Transfer station:* Any permitted temporary holding site for the collection and transfer of solid waste from private citizens and by collector/haulers and commercial collector/haulers to another disposal facility.

*Vector:* A carrier that is capable of transmitting a pathogen from one organism to another including, but not limited to, flies and other insects, rodents, birds and vermin.

*Vehicle:* Every device capable of being moved upon a public highway or road and in, upon or by which any person or property is or shall be transported or drawn upon a public highway or road.

*Yard waste:* Any and all accumulations of grass, leaves, pine straw, small trees and branches, shrubs, vines and other similar items of less than six inches in diameter, four feet in length generated by the typical maintenance of lawns, shrubs, gardens and trees from residential properties. Yard waste shall not be commingled with garbage or solid waste.

*Weeds and rank vegetation:* Dense, uncultivated, herbaceous overgrowth over two feet in height, or briars and trailing vines exceeding ten feet in length.

*White goods:* Includes refrigerators, ranges, water heaters, freezers, dishwashers, residential trash compactors, dryers, air conditioners, and other large appliances.

# APPENDIX A - BEAUFORT COUNTY SC ORDINANCE

## CHAPTER 62 SOLID WASTE MANAGEMENT PLAN

---

*{Ord. No. 064-94, § III, 9-6-1994; Ord. No. 006-02HR, § III, 3-19-2002; Ord. No. 2007/37, 10-22-2007}*

### **Sec. 62-4. - Enforcement.**

(1)

The solid waste management division of the department of public works and other law enforcement agencies shall be charged with the enforcement of this section and shall be authorized to obtain for their personnel such law enforcement commissions as may be necessary. Litter control officers, any commissioned law enforcement officer and appointed code enforcement officers shall have the authority to enforce the provisions of this section and may issue a summons to any violator to appear in the magistrate's court of the county to answer the charge of violation of this section.

(2)

If any solid waste improperly or unlawfully disposed of in violation of this chapter can be identified as having last belonged to, been in the possession of, sent to, or received by, or to have been the property of any person prior to its being disposed of as prohibited herein, such identification shall be presumed to be prima facie evidence that such person disposed of or caused to be disposed of such solid waste in violation of this chapter.

(3)

Proof of means used for proper disposal of solid wastes at businesses and commercial enterprises shall be presented to the code enforcement officers when requested by the officer.

*{Ord. No. 2007/37, 10-22-2007}*

### **Sec. 62-5. - Penalties.**

(a)

A person, from a vehicle or otherwise, shall not dump, throw, drop, deposit, discard, or otherwise dispose of litter or other solid waste, as defined by S.C. § 44-96-40(46), upon public or private property or waters in the state including, but not limited to, a highway, park, beach, campground, forest land, recreational area, trailer park, road, street, or alley except:

(1)

On property designated by the state for the disposal of litter and other solid waste and the person is authorized to use the property for that purpose; or

(2)

Into a litter receptacle in a manner that the litter is prevented from being carried away or deposited by the elements upon a part of the private or public property or waters.

(b)

Responsibility for the removal of litter from property or receptacles is upon the person convicted pursuant to this section of littering the property or receptacles. If there is no conviction for littering, the responsibility is upon the owner of the property.

(c)

(1)

A person who violates the provisions of this section in an amount less than 15 pounds in weight or 27 cubic feet in volume is guilty of a misdemeanor and, upon conviction, shall be fined \$200.00 or imprisoned for not more than 30 days for a first or second conviction, or fined \$500.00 or imprisoned for not more than 30 days for a



# APPENDIX A - BEAUFORT COUNTY SC ORDINANCE

## CHAPTER 62 SOLID WASTE MANAGEMENT PLAN

---

third or subsequent conviction. In addition to the fine or term of imprisonment, the court also must impose eight hours of litter-gathering labor for a first conviction, 16 hours of litter-gathering labor for a second conviction, and 24 hours of litter-gathering labor for a third or subsequent conviction, or other form of public service, under the supervision of the court, as the court may order because of physical or other incapacities.

(2)

The fine for a deposit of a collection of litter or garbage in an area or facility not intended for public deposit of litter or solid waste is \$1,000.00. The provisions of this item apply to a deposit of litter or garbage, as defined in S.C. § 44-67-30 (4), in an area or facility not intended for public deposit of litter or solid waste. This item does not prohibit a private property owner from depositing litter or garbage as a property enhancement if the depositing does not violate applicable local or state health and safety regulations. In addition to a fine and for each offense pursuant to the provisions of this item, the court also shall impose a minimum of five hours of litter-gathering labor or other form of public service, under the supervision of the court, as the court may order because of physical or other incapacities.

(3)

The court, instead of payment of the monetary fine imposed for a violation of this section, may direct the substitution of additional litter-gathering labor or other form of public service, under the supervision of the court, as it may order because of physical or other incapacities not to exceed one hour for each \$5.00 of fine imposed.

(4)

In addition to other punishment authorized by this section, in the discretion of the court in which conviction is obtained, the person may be directed by the judge to pick up and remove from any public place or any private property, with prior permission of the legal owner of the property upon which it is established by competent evidence that the person has deposited litter, all litter deposited on the place or property by any person before the date of execution of sentence.

(d)

A person who violates the provisions of this section in an amount exceeding 15 pounds in weight or 27 cubic feet in volume, but not exceeding 500 pounds or 100 cubic feet, is guilty of a misdemeanor and, upon conviction, shall be fined not less than \$200.00 nor more than \$500.00 or imprisoned for not more than 90 days. In addition, the court shall require the violator to pick up litter or perform other community service commensurate with the offense committed, up to 100 hours.

(e)

(1)

A person who violates the provisions of this section in an amount exceeding 50 pounds in weight or 100 cubic feet in volume is guilty of a misdemeanor and, upon conviction, shall be fined not less than \$500.00 or more than \$1,000.00, or imprisoned not more than one year, or both. In addition, the court may order the violator to:

a.

Remove or render harmless the litter that he dumped in violation of this subsection;

# APPENDIX A - BEAUFORT COUNTY SC ORDINANCE

## CHAPTER 62 SOLID WASTE MANAGEMENT PLAN

---

b. Repair or restore property damaged by, or pay damages for damage arising out of, his dumping of litter in violation of this subsection; or

c. Perform community public service relating to the removal of litter dumped in violation of this subsection or relating to the restoration of an area polluted by litter dumped in violation of this subsection.

(2) A court may enjoin a violation of this subsection.

(3) A motor vehicle, vessel, aircraft, container, crane, winch, or machine involved in the disposal of more than 500 pounds in weight or more than 100 cubic feet in volume of litter in violation of this subsection is declared contraband and is subject to seizure and summary forfeiture to the state.

(4) If a person sustains damages in connection with a violation of this subsection that gives rise to a felony against the person or his property, a court, in a civil action for those damages, shall order the wrongdoer to pay the injured party threefold the actual damages or \$200.00, whichever amount is greater. In addition, the court shall order the wrongdoer to pay the injured party's court costs and attorney's fees.

(5) A fine imposed pursuant to this subsection shall not be suspended, in whole or in part.

(1) (f) When the penalty for a violation of this section includes litter-gathering labor in addition to a fine or imprisonment, the litter-gathering portion of the penalty is mandatory and shall not be suspended; however, the court, upon the request of a person convicted of violating this section, may direct that the person pay an additional monetary penalty instead of the litter-gathering portion of the penalty that must be equal to the amount of \$5.00 an hour of litter-gathering labor. Probation shall not be granted instead of the litter-gathering requirement, except for a person's physical or other incapacities.

(2) Funds collected pursuant to this subsection instead of the mandatory litter-gathering labor shall be remitted to the county or municipality where the littering violation took place. The money collected may be used for the litter-gathering supervision.

(g) For purposes of the offenses established by this section, litter includes cigarettes and cigarette filters.

(h) A prior violation within the meaning of this section means only a violation of this section which occurred within a period of five years including and immediately preceding the date of the last violation.

(i)

## APPENDIX A - BEAUFORT COUNTY SC ORDINANCE CHAPTER 62 SOLID WASTE MANAGEMENT PLAN

---

Magistrates and municipal courts have jurisdiction to try violations of subsections (a), (b), (c), and (d) of this section.

*(Ord. No. 2007/37, 10-22-2007)*

**Secs. 62-6—62-9. - Reserved.**

---

<sup>1</sup>Waste generation rates used are 3.21 p/p/day Class Two and 5.94 p/p/d Class Three, p/p/d averaged on a five year period between FY06-FY10.



**COUNTY COUNCIL OF BEAUFORT COUNTY  
BEAUFORT COUNTY ENGINEERING DIVISION  
102 Industrial Village Road, Building #3, Beaufort, SC 29906  
Post Office Drawer 1228, Beaufort, SC 29901-1228  
Telephone: 843-255-2700 Facsimile: 843-255-9420**

TO: Councilman Gerald Dawson, Chairman, Public Facilities Committee

VIA: Gary Kubic, County Administrator *GKubic*  
Robert McFee, Director, Engineering & Infrastructure Division *JRMcFee*  
Josh Gruber, County Staff Attorney *JGruber*

FROM: Bob Klink, County Engineer *BKlink*

SUBJ: **Condemnation of "Old Miller Road – Lake Point Drive Connector"**

DATE: March 5, 2013

**BACKGROUND:** The connection between the termini of Old Miller Road and Lake Point Drive has been planned for many years and is included in both the Beaufort County Comprehensive Plan and Road CIP. This connection was also provided for in the original Grande Oaks PUD Agreement. The right-of-way needed to make the connection is approximately 2,770' in length x 66' in width and contains roughly 4.2 acres. The connection will be a paved, two-lane roadway constructed by the County.

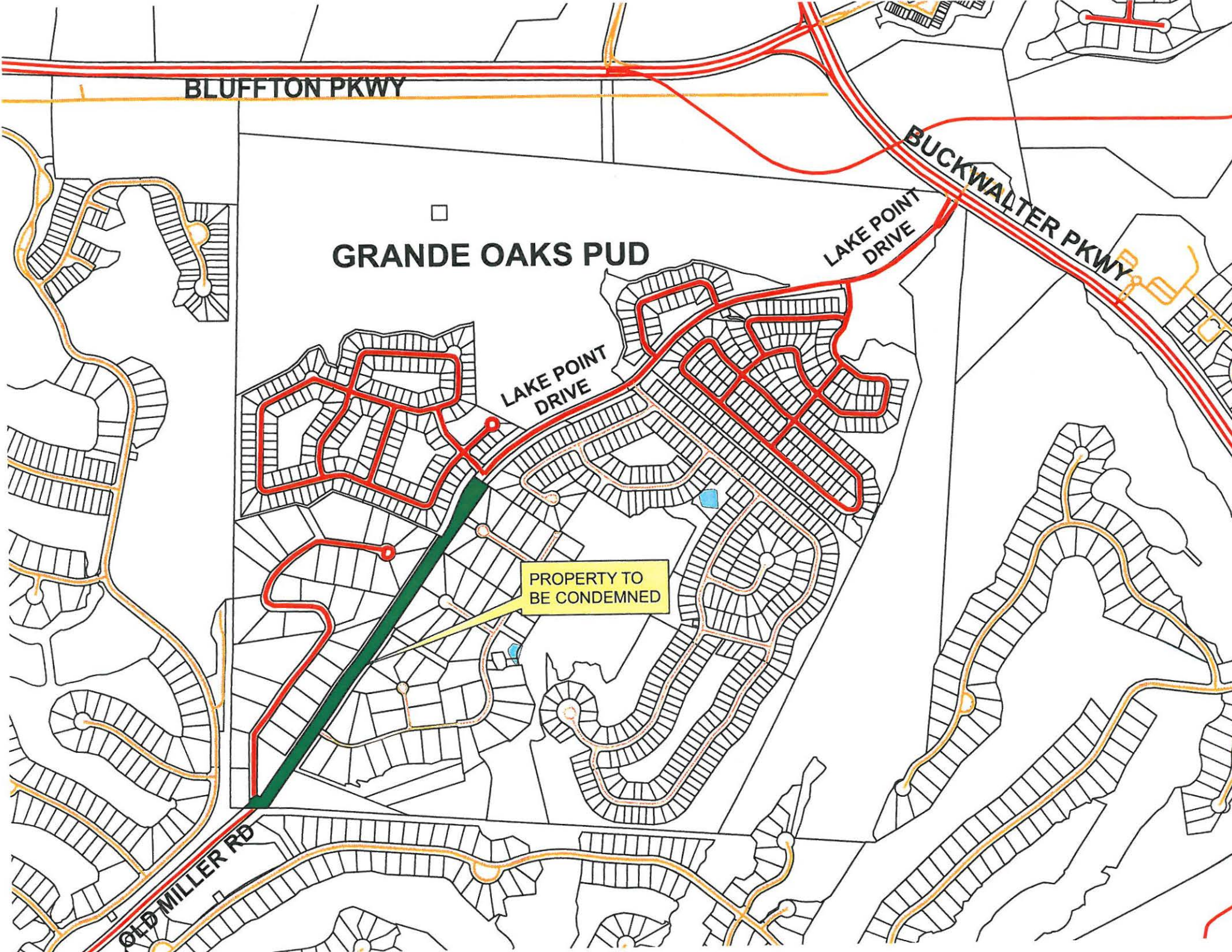
It is anticipated that this connection will (1) distribute traffic in a more efficient manner, (2) improve network inter-connectivity, and (3) reduce vehicle miles of travel. For example, the connection would provide a much shorter alternate route to the Buckwalter Parkway for residents living in the various phases of Grande Oaks Subdivision. Additionally, it would allow traffic from SC Hwy. 46 (May River Road) to access the Buckwalter Parkway through the PUD via Old Miller Road and Lake Point Drive and vice versa.

The County's efforts to acquire the right-of-way have not been successful. After having conducted exhaustive negotiations with the property owners, it is now felt that it will be necessary to use the County's power of eminent domain to make the acquisition.

**RECOMMENDATION:** The Public Facilities Committee approve and recommend to County Council that a right-of-way between the termini of Old Miller Road and Lake Point Drive, as described above, be condemned.

REK/EWK/cvs

Attachments: Map (2)



BLUFFTON PKWY

GRANDE OAKS PUD

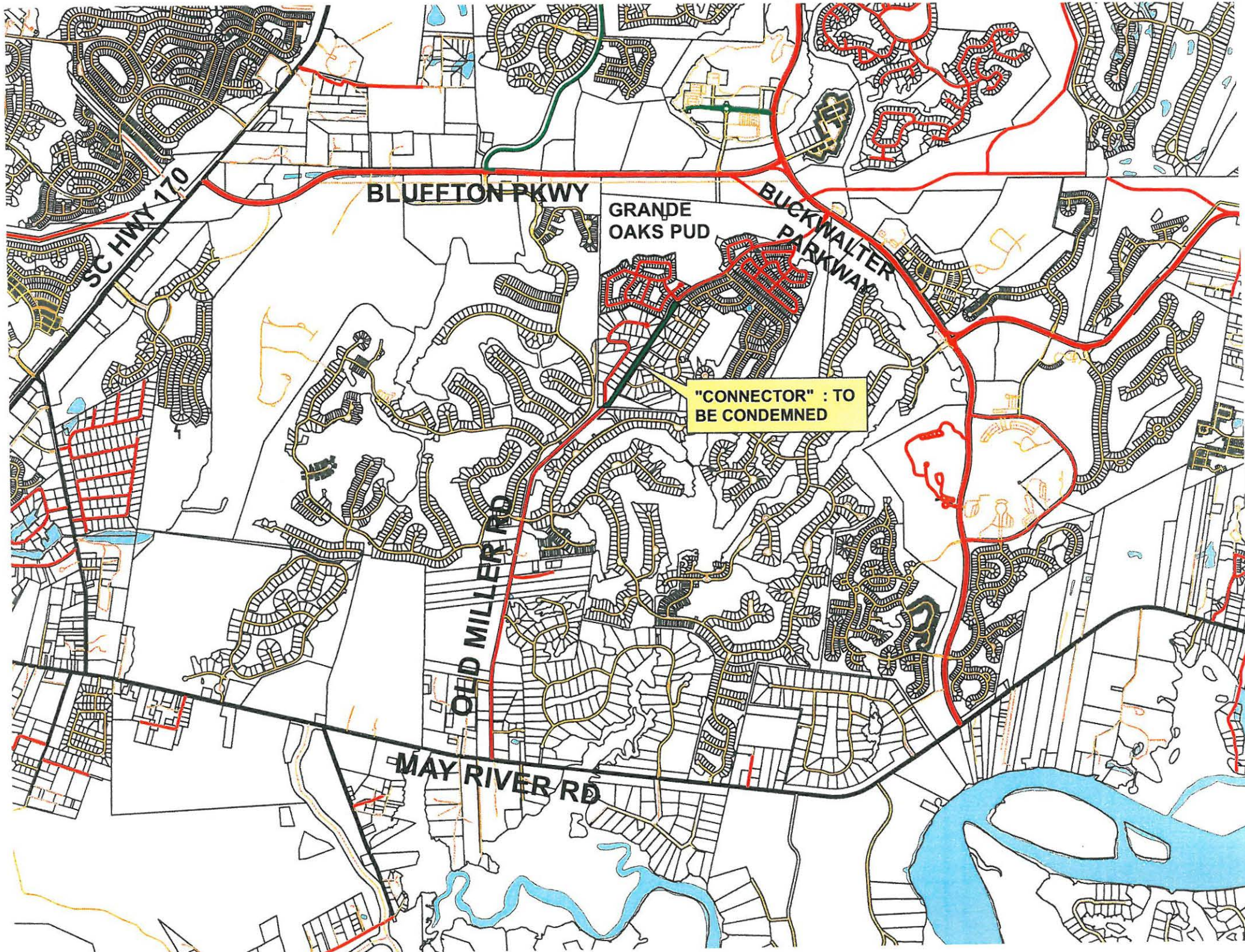
BUCKWALTER PKWY

LAKE POINT DRIVE

LAKE POINT DRIVE

PROPERTY TO BE CONDEMNED

OLD MILLER RD



SC HWY 170

BLUEFTON PKWY

GRANDE OAKS PUD

BUCKWALTER PARKWAY

"CONNECTOR" : TO BE CONDEMNED

OLD MILLER RD

MAY RIVER RD



**COUNTY COUNCIL OF BEAUFORT COUNTY  
BEAUFORT COUNTY ENGINEERING DIVISION  
102 Industrial Village Road, Building #3, 29906  
Post Office Drawer 1228, Beaufort, SC 29901-1228  
Telephone: 843-255-2692 Facsimile: 843-255-9420**

TO: Councilman Gerald Dawson, Chairman, Public Facilities Committee

VIA: Gary Kubic, County Administrator  
David Starkey, Chief Financial Officer  
Robert McFee, PE, Division Director, Engineering and Infrastructure  
Josh Gruber, County Staff Attorney

FROM: Robert Klink, PE, County Engineer

SUBJ: **Renewal of Perryclear Drive Easement**

DATE: April 11, 2013

**BACKGROUND.** On June 4, 1962, the Federal government, through the Department of the Navy, granted a 50-year easement authorizing Beaufort County to “construct, use, maintain, operate and repair” a road, now known as Perryclear Drive, on property owned by the Marine Corps Air Station – Beaufort (MCAS). The location of the easement is more clearly shown on the attached location map and easement survey. That portion of Perryclear Drive subject to the easement is the only means of access to Northview and Perryclear Subdivisions. These residential subdivisions encompass a total of 56 residential lots and 34 permanent residences.

The above described easement expired on June 4, 2012. A request to renew the easement for a period of 50 years was made to the Commanding Officer, MCAS-Beaufort. In response, the Naval Facilities Engineering Command Southeast (NAVFAC SE) has indicated the Navy’s willingness to execute another easement agreement with the provision that the County first submit a payment of \$9,050 to cover the administrative and legal costs associated with the easement renewal.

**RECOMMENDATION.** The Public Facilities Committee accept the Navy’s demand of \$9,050 in exchange for executing a new easement agreement for a period of 50 years and that it recommend the same to County Council. The funds for the easement would come from Vehicular Tag Fee Funds Acct #2342001T -51160.

REK/EWK/mjh

Attachments: 1) Location Map  
2) Original “Grant of Easement”  
3) Letter to MCAS-Beaufort dated 2/14/12  
4) Letter from NAVFAC SE dated 1/10/13  
5) Andrew & Burgess Survey



MCAS

PERRYCLEAR DR

MCAS

MCAS

NORTHVIEW  
SUBDIVISION

PERRYCLEAR  
SUBDIVISION



All correspondence pertaining  
to this easement should include  
reference to NY(1)-57260

**GRANT OF EASEMENT**

THIS INSTRUMENT, made the 4th day of June, 1962

between the United States of America, acting by and through the Department of the Navy, hereinafter referred to as the Government, and Beaufort County, acting by and through the Beaufort County Board of Directors, Beaufort, South Carolina, hereinafter referred to as the Grantee.

WHEREAS, the Government is the owner in fee simple of a parcel of land situate at the Marine Corps Air Station, Beaufort County, South Carolina, hereinafter referred to as the Station; and

WHEREAS, the Grantee has requested the conveyance of an easement for the construction, use, maintenance, operation and repair of a road over and across the aforesaid Government-owned parcel of land, as delineated on the plan annexed hereto; and

WHEREAS, the Secretary of the Navy has found that the grant of an easement on the terms and conditions hereinafter stated will not be against the public interest;

NOW, this Indenture witnesseth that, in consideration of One (\$1.00) Dollar, the sum of which is hereby acknowledged as having been paid and received, the Government, pursuant to the authority of Title 10, U. S. Code, Section 2508, hereby grants unto the said Beaufort County, its representatives, successors, and assigns, for a period of fifty (50) years from the date hereof, an easement for the construction, use, maintenance, operation and repair of a road, hereinafter referred to as the Road, such easement to be confined to the following described land, hereinafter referred to as the Premises:

All that certain tract or parcel of land being and lying in Land Lots Nos. 31, 32, 34, 35, 46 and 48; Section 12; Township 1 North; Range 2 West; Beaufort Township; Beaufort County, South Carolina, more particularly described as follows:

From the southeast corner of Section 12; Township 1 North; Range 2 West; Beaufort Township, Beaufort County, South Carolina; thence N 00° 26' E along the east line of Section 12 a distance of 1968.92 feet to a point of beginning.

Thence continue along the east line of Section 12 N 00° 26' E a distance of 72.47 feet to a point; thence N 63° 11' W a distance of 1070.00 feet to a point; thence N 11° 33' W a distance of 29.30 feet to a point; thence N 42° 05' E a distance of 275.15 feet to a point; thence N 47° 55' W a

distance of 66.00 feet to a point; thence S 42° 05' W a distance of 1350.00 feet to a point; thence S 47° 23' E a distance of 66.00 feet to a point; thence N 42° 25' E a distance of 1109.79 feet to a point; thence N 78° 27' E a distance of 80.32 feet to a point; thence S 67° 11' E a distance of 1125.40 feet to the point of beginning, as shown on T&D Drawing No. 790276, Rev. 2, attached hereto and made a part hereof, marked Exhibit "A" and containing 1.16 acres, more or less.

Also all that certain tract or parcel of land being and lying in Land Lot No. 41, Section 7, Township 1 North, Range 1 West, Beaufort Township, Beaufort County, South Carolina, more particularly described as follows:

From the northeast corner of Section 7, Township 1 North, Range 1 West, Beaufort Township, Beaufort County, South Carolina; thence N 00° 25' E along the west line of Section 7 a distance of 1004.81 feet to a point; thence S 47° 23' E a distance of 194.25 feet to a point; thence N 42° 05' E a distance of 133.00 feet to a point for a point of beginning.

Thence continue N 42° 05' E a distance of 66.53 feet to a point; thence S 67° 11' E a distance of 403.23 feet to a point; thence S 42° 05' W a distance of 66.53 feet to a point; thence N 67° 11' W a distance of 403.23 feet to the point of beginning, as shown on T&D Drawing No. 790276, Rev. 2, attached hereto and made a part hereof, marked Exhibit "A" and containing 0.59 acres, more or less.

THIS EASEMENT is granted subject to the following terms and conditions:

1. That all work in connection with the construction, operation, repair and use of the Road shall be done without cost or expense to the Department of the Navy and in accordance with plans previously approved by the Director, Southeast Division - Bureau of Yards and Docks, hereinafter referred to as the "Director".

2. That the Grantee shall maintain the Road in good condition and shall promptly make all repairs thereto which may be necessary for the operation and the maintenance of said Road.

3. That upon termination of the easement granted herein, if desired by the Government, the Grantee, at its expense, shall remove any and all improvements installed or constructed hereunder and restore the Premises to the same or as good condition as that which existed prior to the exercise by the Grantee of its rights hereunder, such restoration to be effected to the satisfaction of the Director.

4. That the Government reserves the right to make such connections between the Road herein authorized and other roads on the Station

as the Government may consider necessary, and also ~~as~~ <sup>to itself</sup> rights-of-way for all purposes across, over, and/or under the right-of-way herein granted; provided, however, that such rights shall be used in a manner that will not unreasonably interfere with the use and enjoyment by the Grantee of the easement rights granted herein.

5. That all or any part of the right-of-way herein granted may be terminated for failure on the part of the Grantee to comply with any of the terms and conditions of this grant. This easement shall terminate upon abandonment of the rights granted herein or upon nonuse of such rights for a period of two consecutive years.

IN WITNESS WHEREOF, the Government, acting by and through the Department of the Navy, has caused this instrument to be executed the day and year first above written.

UNITED STATES OF AMERICA

James Benson  
By direction of the Chief, Bureau of Yards and Docks, acting under the direction of the Secretary of the Navy

Dodge L. Whipple  
Witness

Elizabeth B. Scott  
Witness

STATE OF SOUTH CAROLINA }  
COUNTY OF CHARLESTON } ss:

Personally appeared before me Dodge L. Whipple, and made oath that he saw James I. Benson sign, seal and deliver the within conveyance for the uses and purposes therein mentioned, and that he with Elizabeth B. Scott, in the presence of each other, witnessed the due execution thereof.

Dodge L. Whipple

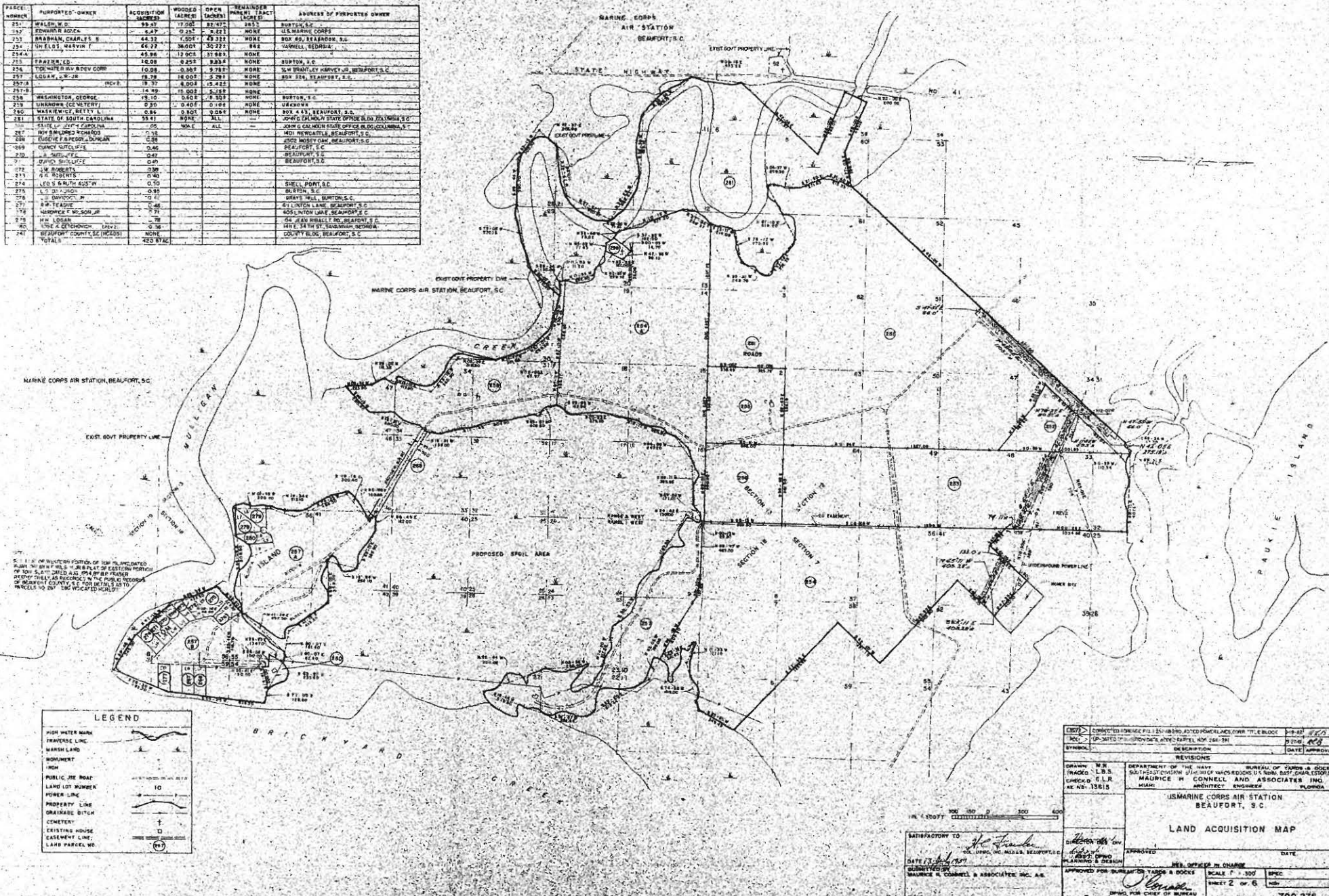
Sworn to before me the 4th day of June, 1962.

Henry Fields for South Carolina

My commission expires at the pleasure of the Governor.

SCHEDULE OF LAND PARCELS

PARCEL NUMBER	PURPORTED OWNER	ACQUISITION DATES	WOODS (ACRES)	OPEN (ACRES)	REMAINDER (ACRES)	PARENT TRACT	ADDRESS OF PURPORTED OWNER
251	WALSH, W.D.	89-87	17.002	82.472	89.33	BURTOWN, S.C.	
252	EDWARDS, EDNA	84-79	0.252	0.221	NONE	US MARINE CORPS	
253	FRANKLIN, CHARLES B.	44-39	1.001	21.311	NONE	BOX 60, BEAUFORT, S.C.	
254	SHIELDS, MARVIN T.	64-77	10.001	30.222	84.3	GANNETT, GEORGIA	
254A		45-38	12.001	31.881	NONE	BURTOWN, S.C.	
255	FRANKLIN, ED.	18-08	0.252	0.221	NONE	BURTOWN, S.C.	
256	TOP WATER RIVER DEV. CORP.	10-08	0.587	3.787	NONE	520 BRANTLEY HARVEY RD., BEAUFORT, S.C.	
257	LOGAN, J.W., JR.	18-78	18.002	3.291	NONE	BOX 216, BEAUFORT, S.C.	
257A		18-77	8.004	13.443	NONE		
257-B		14-49	18.002	3.151	NONE		
258	WASHINGTON, GEORGE	18-10	0.602	0.502	NONE	BURTOWN, S.C.	
259	LINCOLN, GEORGE W.	0-00	0.402	0.104	NONE	US MARINE CORPS	
260	WASKIEWICZ, BETTY L.	0-86	0.802	0.082	NONE	BOX 443, BEAUFORT, S.C.	
261	STATE OF SOUTH CAROLINA	55-81	NONE	ALL		JOHN G. SPURLOCK STATE OFFICE BLDG. COLUMBIA, S.C.	
262	STATE OF SOUTH CAROLINA	0-00	NONE	ALL		JOHN G. SPURLOCK STATE OFFICE BLDG. COLUMBIA, S.C.	
267	ROY BARNES RICHARDS	0-38	0.38	0.000	NONE	1401 NEWCASTLE, BEAUFORT, S.C.	
268	ROBERT B. BROWN, DANMAN	0-58	0.58	0.000	NONE	2502 MONTE CARM, BEAUFORT, S.C.	
269	CONROY, NICHOLAS	0-46	0.46	0.000	NONE	BEAUFORT, S.C.	
270	J. M. WILSON, JR.	0-47	0.47	0.000	NONE	BEAUFORT, S.C.	
271	DAVID, BRUCE	0-49	0.49	0.000	NONE	BEAUFORT, S.C.	
272	L.W. BARNETT	0-36	0.36	0.000	NONE	BEAUFORT, S.C.	
273	A.E. ROBERTS	0-40	0.40	0.000	NONE	BEAUFORT, S.C.	
274	ED S. SMITH, JR.	0-10	0.10	0.000	NONE	SHELL POINT, S.C.	
275	L.S. DAVIS	0-81	0.81	0.000	NONE	BEAUFORT, S.C.	
276	J. DAVENPORT, JR.	0-21	0.21	0.000	NONE	GRAVEY HILL, BURTOWN, S.C.	
277	W.B. TRAVIS	0-46	0.46	0.000	NONE	61 LINTON LANE, BEAUFORT, S.C.	
278	ANDREW C. WILSON, JR.	0-71	0.71	0.000	NONE	605 LINTON LANE, BEAUFORT, S.C.	
279	H.W. LOGAN	0-78	0.78	0.000	NONE	54 JEAN MARIE BLVD., BEAUFORT, S.C.	
280	JOHN C. CROUCHMAN, JR.	0-36	0.36	0.000	NONE	101 E. 34 TH ST., BEAUFORT, S.C.	
281	BEAUFORT COUNTY, S.C.	0-00	0.00	0.000	NONE	COUNTY BLDG., BEAUFORT, S.C.	
TOTAL			423.876				



**LEGEND**

HIGH WATER MARK	
TRANSVERSE LINE	
MARSH LAND	
MONUMENT	
LOW	
PUBLIC USE ROAD	
LAND LOT NUMBER	
POWER LINE	
PROPERTY LINE	
DRAINAGE DITCH	
CENOTAPH	
EXISTING HOUSE	
EASEMENT LINE	
LAND PARCEL NO.	

SATISFACTORY TO: *H. C. Franklin*  
 DATE: 1/14/57  
 SUBMITTED BY: MAURICE H. CONNELL & ASSOCIATES, INC. A.E.  
 MAP

CHECKED: [ ] DATE: 1/14/57 BY: [ ]	DEPARTMENT OF THE NAVY BUREAU OF YARDS & DOCKS SIXTH FLOOR, 400 EAST BASTARD STREET MIAMI, FLORIDA
REVISIONS: NO. 1 DATE: 1/14/57 BY: [ ]	US MARINE CORPS AIR STATION BEAUFORT, S.C. LAND ACQUISITION MAP
APPROVED FOR BUREAU OF YARDS & DOCKS DATE: 1/14/57 BY: [ ]	APPROVED DATE: 1/14/57 BY: [ ]

SCALE: 1" = 300'  
 SHEET 2 OF 6  
 Y. S. DRAWING NO. 790 276

OFFICE OF THE COUNTY ADMINISTRATOR  
COUNTY COUNCIL OF BEAUFORT COUNTY

GARY T. KUBIC  
COUNTY ADMINISTRATOR

CHERYL HARRIS  
EXECUTIVE ASSISTANT

ADMINISTRATION BUILDING  
100 RIBAUT ROAD  
POST OFFICE DRAWER 1228  
BEAUFORT, SOUTH CAROLINA 29901-1228  
TELEPHONE: (843) 255-2026  
FAX: (843) 255-9403  
[www.bcgov.net](http://www.bcgov.net)

BRYAN J. HILL  
DEPUTY COUNTY ADMINISTRATOR

JOSHUA A. GRUBER  
STAFF ATTORNEY

February 14, 2012

Colonel Brian Murtha  
Commanding Officer  
Marine Corps Air Station- Beaufort  
P.O. Box 55001  
Beaufort, SC 29904-5001

Re: Base: MCAS Beaufort, SC  
Special Area:  
Type of Action: Out Easement  
Contact Number: NOY (R) – 57260  
Party Involved: Beaufort County  
Date of Action: 4-Jun -1962

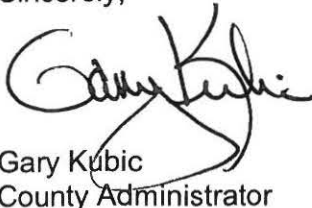
Dear Colonel Murtha:

The easement agreement referenced above, a copy of which is enclosed, authorized Beaufort County to "construct, use, maintain, operate and repair" a road, now known as Perryclear Drive, on MCAS property. This easement is set to expire on 4 June 2012. It is my purpose here to request, on behalf of Beaufort County, that a new easement, identical to the original, be granted.

Please note that Perryclear Drive serves as the only means of access to Northview and Perryclear subdivisions which together encompass 56 parcels and 34 permanent residences.

Thank you for your time and consideration.

Sincerely,



Gary Kubic  
County Administrator

GK/EWK

Enclosures: Easement Agreement Document  
Aerial Photo/Map

cc: Robert McFee



DEPARTMENT OF THE NAVY  
NAVAL FACILITIES ENGINEERING COMMAND SOUTHEAST  
JACKSONVILLE, FL 32212-0030

11011  
Ser OPZBMB/0008  
January 10, 2013

Mr. Gary Kubic  
Beaufort County Administrator  
PO Box 1228  
Beaufort, SC 29901

Dear Mr. Kubic:

Subj: COST ESTIMATE FOR PERRYCLEAR DRIVE EASEMENT

Naval Facilities Engineering Command Southeast (NAVFAC SE) has received a copy of Marine Corps Air Station Beaufort's request to renew the grant of easement # NOY(R)-57260 to Beaufort County for Perryclear Drive. NAVFAC SE is ready to start execution on this agreement; however, the Department of the Navy (DON) does not appropriate funding for the costs associated with real estate support in the disposal, transfer, and/or out-granting of real property other than those of its own initiative. Therefore, for projects requested by non-federal entities, the requestors must reimburse the administrative costs.

In turn, NAVFAC SE is providing the below information outlining the various real estate actions required to execute the easement to Beaufort County for Perryclear Drive and the associated costs.

The actions and services include but are not limited to:

1. Administrative support by a Project Manager including negotiations, meetings, teleconferences, and document preparation.
2. Plat of Survey required for the legal description.
3. Environmental Condition of Property and NEPA reports conducted by the installation environmental staff and approved by the regional environmental staff.
4. Post execution administration, follow up, and documentation.

11011  
Ser OPZBMB/0008  
January 10, 2013

5. Legal support including document review, teleconferences, and meetings as necessary for agreement execution.

6. Real Estate Contracting Officer services.

The following outlines the associated costs for the actions listed above. Should the actual cost be less than the below estimate, the Government will refund to you any unused funds.

Product Services Labor	\$ 9,050.00
Plat of Survey	\$15,000.00
Total	\$24,050.00

Please prepare a check payable to The US Treasury in the amount of \$22,425.00 and mail to:

Commanding Officer  
NAVFAC SE  
ATTN: Real Estate Contracting Officer  
PO Box 30, BLDG 903, Room 260  
Jacksonville, FL 32212-0030

While we shall work with you to complete the easement in an expeditious manner, since the DON does not have funding to support this action, we are unable to proceed until your organization has furnished the required funds.

My point of contact is Mr. Michael Brooks, Realty Specialist, who can be contacted by telephone at (904)542-6219 or e-mail at [michael.brooks3@navy.mil](mailto:michael.brooks3@navy.mil).

Sincerely,



CASSANDRA (S.) NORRIS  
Asset Management Team Lead  
Real Estate Contracting Officer

Copy to: MCAS Beaufort, CPLO

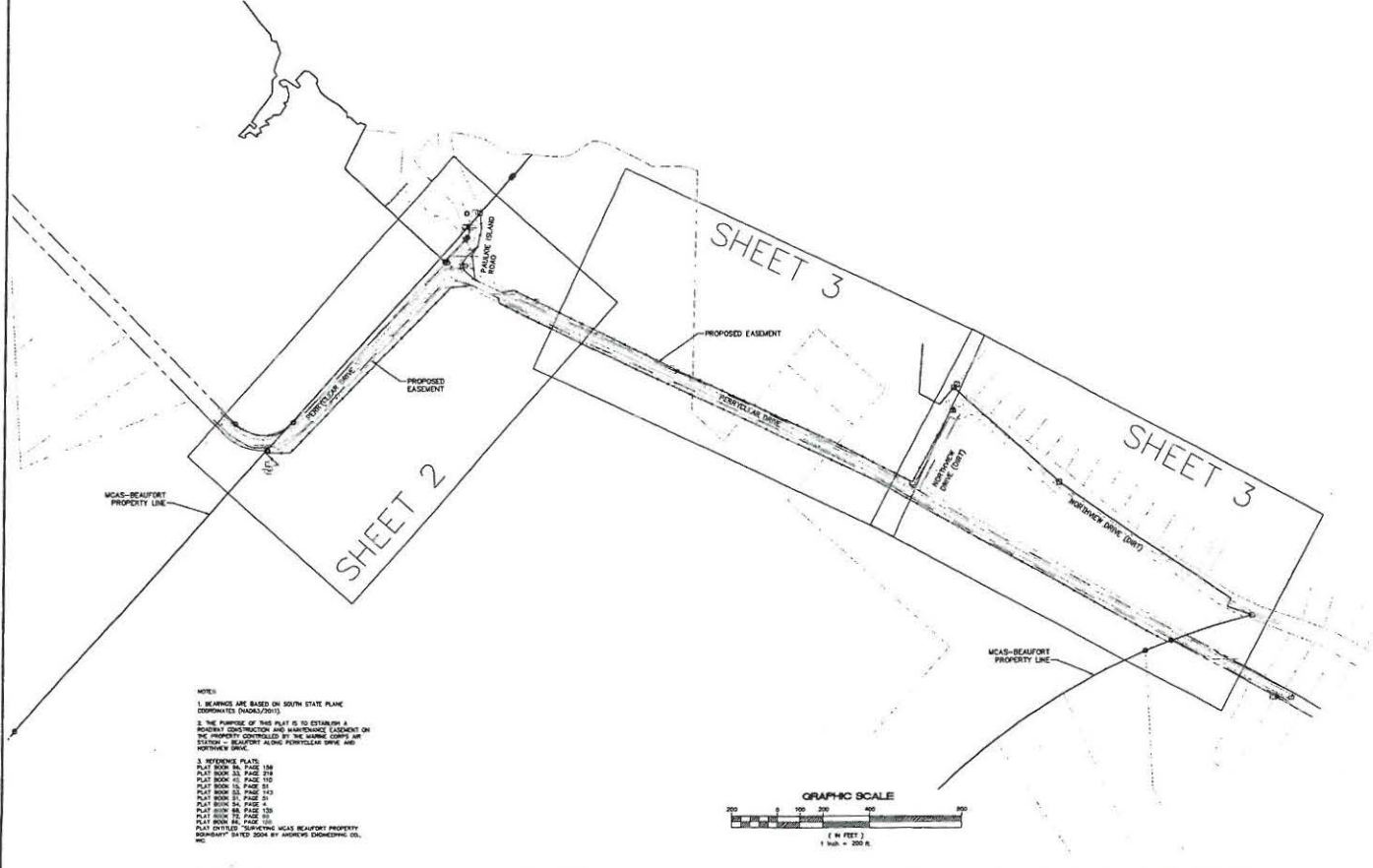
**Andrews & Burgess Inc.**  
Engineering & Surveying

404 Shanklin Road  
Beaufort, SC 29906  
P: 843-662-5369  
Fax: 843-662-9766

THE DESIGN AND IDEAS PROVIDED IN THESE DRAWINGS ARE THE OWNED PROPERTY OF ANDREWS & BURGESS, INC. USE OR REPRODUCTION OF THESE DRAWINGS IS STRICTLY PROHIBITED WITHOUT PRIOR WRITTEN CONSENT.



**ROADWAY EASEMENT PLAT**  
Prepared For  
BEAUFORT COUNTY ENGINEERING  
PERRYCLEAR DRIVE & NORTHVIEW DRIVE  
MARINE CORPS AIR STATION - BEAUFORT  
BEAUFORT COUNTY, SOUTH CAROLINA  
OVERALL SURVEY PROJECT DRAWING  
SHEET 1 OF 4



**LEGEND:**

---	ADJ. CENTERLINE
⊕	BOUND BENCH
---	NOTCH OF BANK
□	BATCH BASH
□	CONCRETE MONUMENT FOUND
---	CHALK TELEPHONE WIRE
---	CONCRETE OF OTHER
---	CONCRETE FENCE
---	ELECTRIC BOX
---	ELECTRIC LINE (UNDERGROUND)
---	ELECTRIC METER
---	CHAIN FENCE
---	CHAIN MARK
---	FIRE DEPARTMENT CONNECTION
---	FIRE HYDRANT
---	FLAG POLE
---	GRAVE MARK
---	GRASSY LAWN
---	GAS LINE
---	GAS LINE WARDER
---	GAS TANK
---	GAS VALVE
---	GAS VALVE WARDER
---	GUY WIRE
---	HOSE BOX
---	IRON PIPE FOUND
---	IRON PIPE SET
---	IMPERMEABLE VALVE
---	LIGHT POLE / LAMP POST
---	WATERPOST
---	MONITORING WELL
---	OVERHEAD POWER LINE
---	POST
---	POST INDICATOR VALVE
---	POWER POLE
---	ROAD-TO-ROAD
---	SAWTOOTH SEWER CLEANOUT
---	SAWTOOTH SEWER FOREDRAM
---	SAWTOOTH SEWER LINE
---	SAWTOOTH SEWER MANHOLE
---	SEWER LINE WARDER
---	SEWER VALVE
---	SEWER VALVE WARDER
---	SPRINKLER HEAD
---	STONE DRAIN MANHOLE
---	STONE DRAIN WPC
---	TELEPHONE LINE
---	TELEPHONE MANHOLE
---	TELEPHONE FERTICAL
---	TOP OF BANK
---	TRANSFORMER
---	WELL
---	WATER FOUNTAIN
---	WATER LINE
---	WATER LINE WARDER
---	WATER METER
---	WATER TANK
---	WATER VALVE
---	WATER VALVE WARDER

**NOTES**

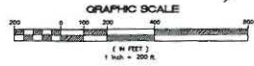
1. BEARINGS ARE BASED ON SOUTH STATE PLANE COORDINATES (NAD83/2011).

2. THE PURPOSE OF THIS PLAT IS TO ESTABLISH A ROBUST CONSTRUCTION AND BOUNDARY COORDINATE ON THE PROPERTY CONTROLLED BY THE MARINE CORPS AIR STATION - BEAUFORT ALONG PERRYCLEAR DRIVE AND NORTHVIEW DRIVE.

3. REFERENCE PLATS:

- PLAT BOOK 88, PAGE 104
- PLAT BOOK 33, PAGE 274
- PLAT BOOK 11, PAGE 110
- PLAT BOOK 26, PAGE 214
- PLAT BOOK 24, PAGE 174
- PLAT BOOK 51, PAGE 21
- PLAT BOOK 54, PAGE 4
- PLAT BOOK 88, PAGE 130
- PLAT BOOK 72, PAGE 101

PLAT ENTITLED "SURVEYING MCAS BEAUFORT PROPERTY BOUNDARY" DATED 2004 BY ANDREWS ENGINEERING, INC.



I HEREBY STATE THAT TO THE BEST OF MY PROFESSIONAL KNOWLEDGE, INFORMATION AND BELIEF, THE SURVEY SHOWN HEREON WAS MADE IN ACCORDANCE WITH THE REQUIREMENTS OF THE STATUTES OF PRACTICE GOVERNING SURVEYING IN SOUTH CAROLINA, AND ACCORDING TO THE REQUIREMENTS FOR A CLASS "A" SURVEY AS SET FORTH THEREIN. ALSO, THERE ARE NO UNDISCOVERED ENCUMBRANCES OR PRELATIONS OTHER THAN SHOWN.

4 of 4

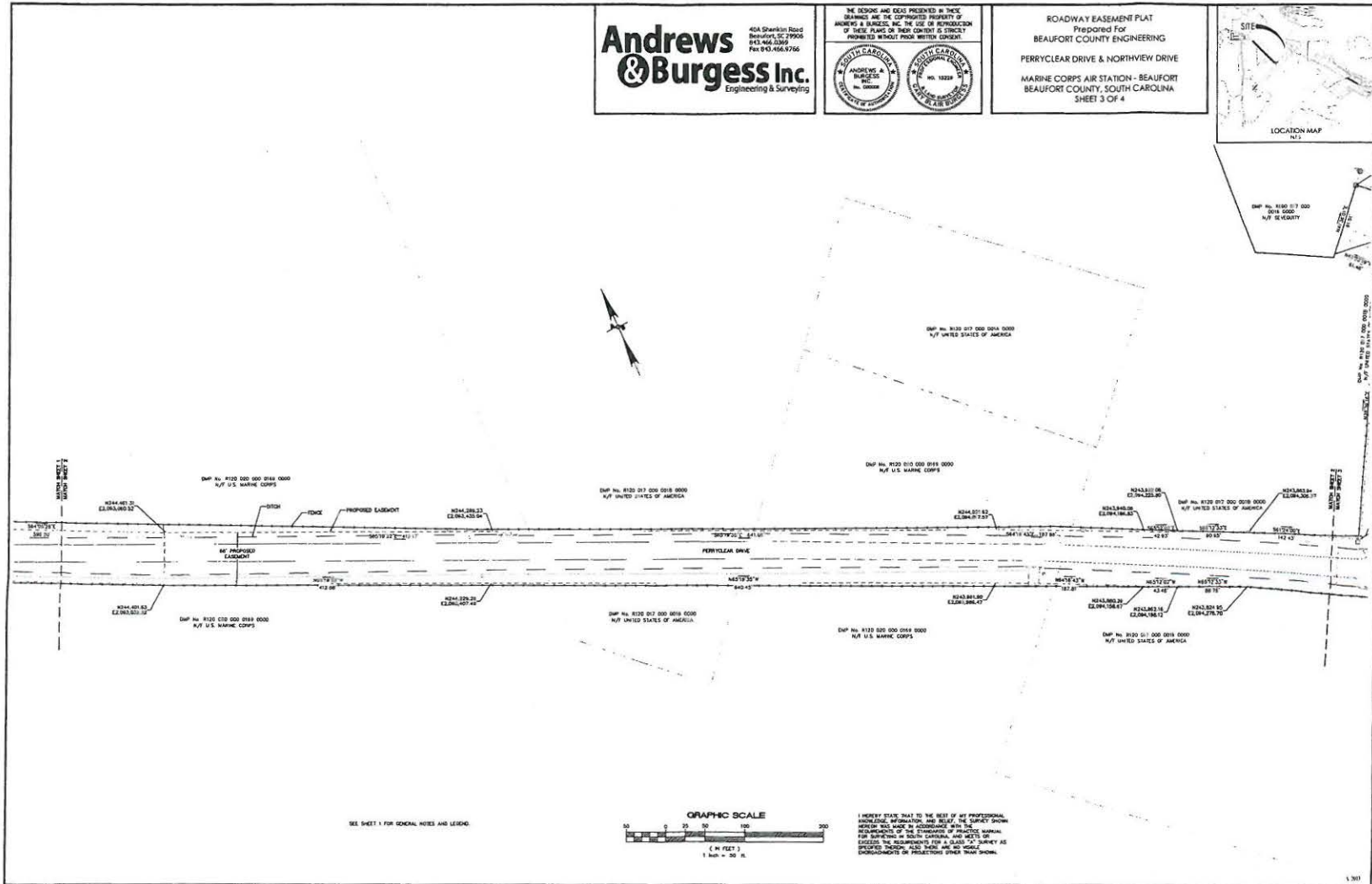
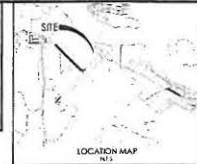


**Andrews & Burgess Inc.**  
Engineering & Surveying

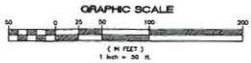
1014 Sherrill Road  
Beaufort, SC 29906  
P: 843.466.2300  
F: 843.466.9766



ROADWAY EASEMENT PLAT  
Prepared For  
BEAUFORT COUNTY ENGINEERING  
PERRYCLEAR DRIVE & NORTHVIEW DRIVE  
MARINE CORPS AIR STATION - BEAUFORT  
BEAUFORT COUNTY, SOUTH CAROLINA  
SHEET 3 OF 4



SEE SHEET 1 FOR GENERAL NOTES AND LEGEND



I HEREBY STATE THAT TO THE BEST OF MY PROFESSIONAL KNOWLEDGE, INFORMATION, AND BELIEF, THE SURVEY DRAWING HEREON WAS MADE IN ACCORDANCE WITH THE REQUIREMENTS OF THE ENGINEERING AND SURVEYING ACT OF 1968 IN THE STATE OF SOUTH CAROLINA, AND THAT IT EXCEEDS THE REQUIREMENTS FOR A CLASS "A" SURVEY AS SPECIFIED THEREIN, AND THAT THERE ARE NO HIDDEN ENCUMBRANCES OR PROJECTIONS OTHER THAN SHOWN.

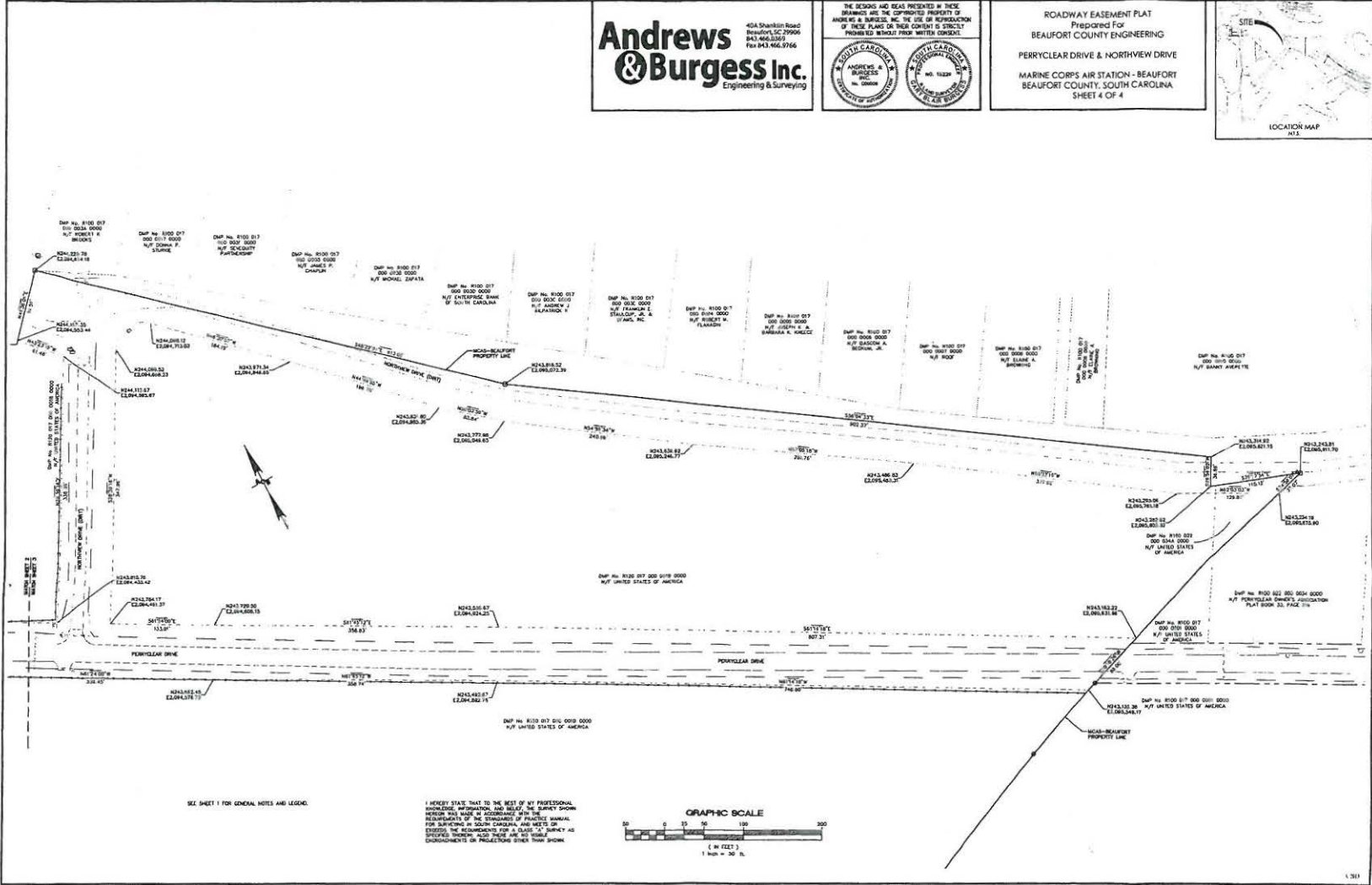
3 of 4

**Andrews & Burgess Inc.**  
Engineering & Surveying

424 Shanklin Road  
Beaufort, SC 29906  
843.466.3339  
Fax 843.466.9766



ROADWAY EASEMENT PLAT  
Prepared For  
BEAUFORT COUNTY ENGINEERING  
PERRYCLEAR DRIVE & NORTHVIEW DRIVE  
MARINE CORPS AIR STATION - BEAUFORT  
BEAUFORT COUNTY, SOUTH CAROLINA  
SHEET 4 OF 4



4 of 4