



AGENDA
AIRPORTS BOARD
Thursday, June 20, 2013
1:30 p.m.
Council Chambers, Administration Building
Beaufort County Government Center
100 Ribaut Road, Beaufort

1. CALL TO ORDER
2. PLEDGE OF ALLEGIANCE
3. MOTION TO ACCEPT JUNE 20, 2013 AGENDA
4. MOTION TO ACCEPT MAY 16, 2013 MINUTES
5. GUEST INTRODUCTIONS
6. PUBLIC COMMENT - Limited to Three Minutes Each Person
7. AIRPORTS FINANCIALS – Alicia Holland
8. REMARKS BY THE CHAIRMAN
9. BEAUFORT COUNTY AIRPORT REPORT (LADY'S ISLAND AIRPORT)
 - A. Fuel Sales - Joel Phillips ([backup](#))
 - B. Projects Update – Rob McFee
10. HILTON HEAD ISLAND AIRPORT REPORT
 - A. Tower Report – Larry Yeager ([backup](#))
 - B. Operations Report – Larry Yeager ([backup](#))
 - C. Noise Complaints & Traffic Counters – Larry Yeager
 - D. Projects Update – Rob McFee
11. COMMITTEE REPORTS
 - A. Lady's Island Airport Operations - Graham Kerr
 - B. Hilton Head Island Airport Operations - Will Dopp
12. NEW BUSINESS:
 - A. Lady's Island Terminal and Hangar Improvements – Joel Phillips
 - B. Hilton Head Island Airport Terminal Improvements – Judy Elder ([backup](#))
 - C. Hangar Rental Rates at Hilton Head Island Airport – Rob McFee
13. UNFINISHED BUSINESS:
14. PUBLIC COMMENT - Limited to Three Minutes Each Person



15. FUTURE MEETINGS

Airports Board: The next meeting will be held on July 18, 2013 at 1:30 PM in the County Council Chambers of the Beaufort County Government Center.

16. ADJOURNMENT



LADY'S ISLAND AIRPORT OPERATIONS REPORT

| | | Avgas | Jet A | Total Flow | Total Flight Ops |
|--------------------|--|---------------|---------------|---------------|------------------|
| 2013 | | | | | |
| January | | 2,393 | 2,682 | 5,075 | 1,010 |
| February | | 2,831 | 2,798 | 5,629 | 1,102 |
| March | | 4,804 | 4,019 | 8,823 | 2,005 |
| April | | 3,682 | 4,505 | 8,187 | 1,954 |
| May | | 3,402 | 2,862 | 6,264 | 1,249 |
| June | | | | | |
| July | | | | | |
| August | | | | | |
| September | | | | | |
| October | | | | | |
| November | | | | | |
| December | | | | | |
| 2013 Totals | | 17,112 | 16,866 | 33,978 | 7,320 |
| | | | | | |
| | | Avgas | Jet A | Total Flow | Total Flight Ops |
| 2012 | | | | | |
| January | | 3,130 | 2,520 | 5,650 | 1,018 |
| February | | 2,029 | 1,882 | 3,911 | 984 |
| March | | 4,418 | 4,025 | 8,443 | 1,912 |
| April | | 4,181 | 4,110 | 8,291 | 1,965 |
| May | | 3,062 | 4,049 | 7,111 | 1,106 |
| June | | 3,928 | 3,055 | 6,983 | 1,222 |
| July | | 3,292 | 883 | 4,175 | 905 |
| August | | 2,616 | 2,232 | 4,848 | 948 |
| September | | 2,910 | 2,257 | 5,167 | 1,105 |
| October | | 3,349 | 4,282 | 7,631 | 1,860 |
| November | | 3,950 | 4,056 | 8,006 | 1,984 |
| December | | 3,339 | 3,060 | 6,399 | 1,685 |
| 2012 Totals | | 40,204 | 36,411 | 76,615 | 16,694 |
| | | | | | |
| | | Avgas | Jet A | Total Flow | Total Flight Ops |
| 2011 | | | | | |
| January | | 3,580 | 3,036 | 6,616 | 920 |
| February | | 4,020 | 1,849 | 5,869 | 1,074 |
| March | | 5,166 | 3,005 | 8,171 | 1,847 |
| April | | 4,884 | 4,181 | 9,065 | 2,015 |
| May | | 3,666 | 4,822 | 8,488 | 1,280 |
| June | | 3,167 | 1,848 | 5,015 | 1,018 |
| July | | 2,968 | 2,336 | 5,304 | 1,038 |
| August | | 2,432 | 2,478 | 4,910 | 912 |
| September | | 2,488 | 2,615 | 5,103 | 858 |
| October | | 3,367 | 3,461 | 6,828 | 1,141 |
| November | | 3,913 | 6,168 | 10,081 | 1,838 |
| December | | 3,518 | 2,675 | 6,193 | 1,122 |
| 2011 Totals | | 43,169 | 38,474 | 81,643 | 15,063 |

HXD TOWER REPORT

| TOWER | VFR | IFR | Total | After Hrs. GA | After Hrs. Comm | Total Ops |
|--------------------|--------------|--------------|---------------|----------------------|------------------------|------------------|
| January 2013 | 961 | 1,103 | 2,064 | 128 | 54 | 2,246 |
| February 2013 | 812 | 1,080 | 1,892 | 96 | 41 | 2,029 |
| March 2013 | 1,126 | 1,477 | 2,603 | 130 | 34 | 2,767 |
| April 2013 | 1,126 | 2,126 | 3,252 | 160 | 34 | 3,446 |
| May 2013 | 1,067 | 2,131 | 3,198 | 48 | 35 | 3,281 |
| June 2013 | | | 0 | | | 0 |
| July 2013 | | | 0 | | | 0 |
| August 2013 | | | 0 | | | 0 |
| September 2013 | | | 0 | | | 0 |
| October 2013 | | | 0 | | | 0 |
| November 2013 | | | 0 | | | 0 |
| December 2013 | | | 0 | | | 0 |
| TOTALS 2013 | 5,092 | 7,917 | 13,009 | 562 | 198 | 13,769 |

| TOWER | VFR | IFR | Total | After Hrs. GA | After Hrs. Comm | Total Ops |
|--------------------|---------------|---------------|---------------|----------------------|------------------------|------------------|
| January 2012 | 1,161 | 1,284 | 2,445 | 53 | 14 | 2,512 |
| February 2012 | 1,174 | 1,351 | 2,525 | 92 | 20 | 2,637 |
| March 2012 | 1,374 | 1,957 | 3,331 | 126 | 19 | 3,476 |
| April 2012 | 1,176 | 2,173 | 3,349 | 127 | 19 | 3,495 |
| May 2012 | 1,279 | 1,965 | 3,244 | 125 | 23 | 3,392 |
| June 2012 | 1,103 | 1,678 | 2,781 | 134 | 35 | 2,950 |
| July 2012 | 1,162 | 1,617 | 2,779 | 88 | 36 | 2,903 |
| August 2012 | 970 | 1,566 | 2,536 | 64 | 37 | 2,637 |
| September 2012 | 1,092 | 1,424 | 2,516 | 119 | 38 | 2,673 |
| October 2012 | 1,009 | 1,510 | 2,519 | 126 | 35 | 2,680 |
| November 2012 | 1,043 | 1,493 | 2,536 | 124 | 56 | 2,716 |
| December 2012 | 873 | 1,099 | 1,972 | 125 | 56 | 2,153 |
| TOTALS 2012 | 13,416 | 19,117 | 32,533 | 1,303 | 388 | 34,224 |

| TOWER | VFR | IFR | Total | After Hrs. GA | After Hrs. Comm | Total Ops |
|--------------------|---------------|---------------|---------------|----------------------|------------------------|------------------|
| January 2011 | 1,027 | 1,082 | 2,109 | 48 | 17 | 2,174 |
| February 2011 | 1,052 | 1,064 | 2,116 | 86 | 12 | 2,214 |
| March 2011 | 1,328 | 1,575 | 2,903 | 117 | 40 | 3,060 |
| April 2011 | 1,572 | 2,214 | 3,786 | 124 | 52 | 3,962 |
| May 2011 | 1,721 | 2,038 | 3,759 | 120 | 67 | 3,946 |
| June 2011 | 1,540 | 1,775 | 3,315 | 126 | 38 | 3,479 |
| July 2011 | 1,312 | 1,834 | 3,146 | 80 | 27 | 3,253 |
| August 2011 | 1,294 | 1,557 | 2,851 | 129 | 47 | 3,027 |
| September 2011 | 1,029 | 1,493 | 2,522 | 129 | 52 | 2,703 |
| October 2011 | 1,146 | 1,680 | 2,826 | 137 | 46 | 3,009 |
| November 2011 | 945 | 1,505 | 2,450 | 114 | 14 | 2,578 |
| December 2011 | 966 | 1,375 | 2,341 | 116 | 21 | 2,478 |
| TOTALS 2011 | 14,932 | 19,192 | 34,124 | 1,326 | 433 | 35,883 |

ENPLANEMENTS/DEPLANEMENTS

| HILTON HEAD ISLAND PASSENGER ENPLANEMENTS(departures) 2004-2012 | | | | | | | | | | | | |
|--|---------------|---------------|---------------|---------------|---------------|---------------|---------------|---------------|---------------|---------------|--|--|
| | 2004 | 2005 | 2006 | 2007 | 2008 | 2009 | 2010 | 2011 | 2012 | 2013 | | |
| JAN | 2,985 | 3,520 | 3,540 | 3,145 | 4,206 | 2,510 | 2,539 | 2,847 | 3,421 | 3,232 | | |
| FEB | 3,431 | 3,957 | 2,748 | 3,250 | 5,275 | 2,976 | 2,916 | 2,800 | 3,625 | 3,342 | | |
| MAR | 5,053 | 6,647 | 5,956 | 6,273 | 8,052 | 5,547 | 6,044 | 5,325 | 5,461 | 5,326 | | |
| APR | 6,513 | 7,809 | 6,715 | 8,985 | 7,930 | 6,872 | 7,596 | 6,216 | 6,404 | 5,385 | | |
| MAY | 6,438 | 7,782 | 6,739 | 8,682 | 8,389 | 7,177 | 7,912 | 6,705 | 6,092 | 5,962 | | |
| JUN | 6,111 | 6,814 | 6,140 | 8,638 | 7,819 | 6,771 | 7,947 | 6,138 | 5,792 | | | |
| JUL | 6,051 | 6,849 | 5,850 | 8,498 | 7,954 | 7,393 | 7,629 | 6,018 | 5,896 | | | |
| AUG | 6,422 | 6,500 | 5,086 | 8,843 | 7,649 | 6,957 | 7,617 | 5,395 | 6,154 | | | |
| SEP | 4,957 | 1,129 | 5,070 | 7,392 | 5,922 | 6,249 | 7,266 | 5,051 | 5,003 | | | |
| OCT | 6,115 | 6,632 | 5,794 | 9,230 | 6,882 | 6,601 | 8,314 | 6,038 | 5,219 | | | |
| NOV | 5,052 | 5,107 | 4,313 | 7,355 | 5,927 | 4,121 | 4,940 | 4,908 | 4,567 | | | |
| DEC | 3,792 | 3,676 | 3,198 | 4,780 | 2,928 | 2,977 | 3,374 | 3,456 | 3,268 | | | |
| TOTALS | 62,920 | 66,422 | 61,149 | 85,071 | 78,933 | 66,151 | 74,094 | 60,897 | 60,902 | 23,247 | | |

| HILTON HEAD ISLAND PASSENGER DEPLANEMENTS(arrivals) 2004-2012 | | | | | | | | | | | | |
|--|---------------|---------------|---------------|---------------|---------------|---------------|---------------|---------------|---------------|---------------|--|--|
| | 2004 | 2005 | 2006 | 2007 | 2008 | 2009 | 2010 | 2011 | 2012 | 2013 | | |
| JAN | 2,810 | 3,177 | 3,253 | 2,887 | 3,591 | 2,308 | 2,228 | 2,532 | 3,003 | 2,868 | | |
| FEB | 3,369 | 4,120 | 2,964 | 3,453 | 5,729 | 3,256 | 3,106 | 2,940 | 3,710 | 3,528 | | |
| MAR | 5,558 | 7,418 | 6,652 | 7,313 | 8,652 | 5,770 | 6,750 | 5,715 | 6,051 | 6,109 | | |
| APR | 7,053 | 7,912 | 6,740 | 9,289 | 8,263 | 7,057 | 8,111 | 6,774 | 6,353 | 5,306 | | |
| MAY | 6,530 | 7,995 | 6,836 | 9,035 | 8,681 | 7,175 | 8,287 | 6,649 | 6,143 | 5,947 | | |
| JUN | 6,419 | 7,649 | 6,465 | 8,961 | 8,110 | 7,055 | 8,716 | 6,317 | 5,973 | | | |
| JUL | 6,028 | 6,868 | 5,895 | 8,708 | 8,470 | 7,849 | 8,327 | 6,415 | 6,079 | | | |
| AUG | 6,518 | 6,399 | 5,177 | 8,979 | 7,748 | 6,684 | 7,706 | 5,291 | 6,291 | | | |
| SEP | 4,936 | 1,185 | 5,152 | 7,119 | 5,583 | 6,558 | 7,109 | 5,303 | 4,971 | | | |
| OCT | 6,102 | 6,654 | 5,832 | 9,068 | 7,243 | 6,699 | 8,135 | 5,816 | 5,433 | | | |
| NOV | 4,828 | 5,002 | 4,380 | 7,169 | 5,556 | 3,860 | 4,762 | 4,615 | 4,338 | | | |
| DEC | 3,972 | 3,742 | 3,419 | 5,010 | 3,037 | 3,248 | 3,668 | 3,763 | 3,479 | | | |
| TOTALS | 64,123 | 68,121 | 62,765 | 86,991 | 80,663 | 67,519 | 76,905 | 62,130 | 61,824 | 23,758 | | |

ENPLANEMENTS/DEPLANEMENTS

| TOTAL PASSENGER ENPLANEMENTS & DEPLANEMENTS 2004-2012 | | | | | | | | | | | | |
|--|----------------|----------------|----------------|----------------|----------------|----------------|----------------|----------------|----------------|---------------|--|--|
| | 2004 | 2005 | 2006 | 2007 | 2008 | 2009 | 2010 | 2011 | 2012 | 2013 | | |
| JAN | 5,795 | 6,697 | 6,793 | 6,032 | 7,797 | 4,818 | 4,767 | 5,379 | 6,424 | 6,100 | | |
| FEB | 6,800 | 8,077 | 5,712 | 6,703 | 11,004 | 6,232 | 6,022 | 5,740 | 7,335 | 6,870 | | |
| MAR | 10,611 | 14,065 | 12,608 | 13,586 | 16,704 | 11,317 | 12,794 | 11,040 | 11,512 | 11,435 | | |
| APR | 13,566 | 15,721 | 13,455 | 18,274 | 16,193 | 13,929 | 15,707 | 12,990 | 12,757 | 10,691 | | |
| MAY | 12,968 | 15,777 | 13,575 | 17,717 | 17,070 | 14,352 | 16,199 | 13,354 | 12,235 | 11,909 | | |
| JUN | 12,530 | 14,463 | 12,605 | 17,599 | 15,929 | 13,826 | 16,663 | 12,455 | 11,765 | 0 | | |
| JUL | 12,079 | 13,717 | 11,745 | 17,206 | 16,424 | 15,242 | 15,956 | 12,433 | 11,975 | 0 | | |
| AUG | 12,940 | 12,899 | 10,263 | 17,822 | 15,397 | 13,641 | 15,323 | 10,686 | 12,445 | 0 | | |
| SEP | 9,893 | 2,314 | 10,222 | 14,511 | 11,505 | 12,807 | 14,375 | 10,354 | 9,974 | 0 | | |
| OCT | 12,217 | 13,286 | 11,626 | 18,298 | 14,125 | 13,300 | 16,449 | 11,854 | 10,652 | 0 | | |
| NOV | 9,880 | 10,109 | 8,693 | 14,524 | 11,483 | 7,981 | 9,702 | 9,523 | 8,905 | 0 | | |
| DEC | 7,765 | 7,418 | 6,617 | 9,790 | 5,965 | 6,225 | 7,042 | 7,219 | 6,747 | 0 | | |
| TOTALS | 127,044 | 134,543 | 123,914 | 172,062 | 159,596 | 133,670 | 150,999 | 123,027 | 122,726 | 47,005 | | |

Delta Connection/ASA began service March 17, 2007

Delta Connection/ASA suspended service November 30, 2008

Delta Connection/Mesaba began service March 2, 2009

Delta Connection/Mesaba suspended service November 2, 2009

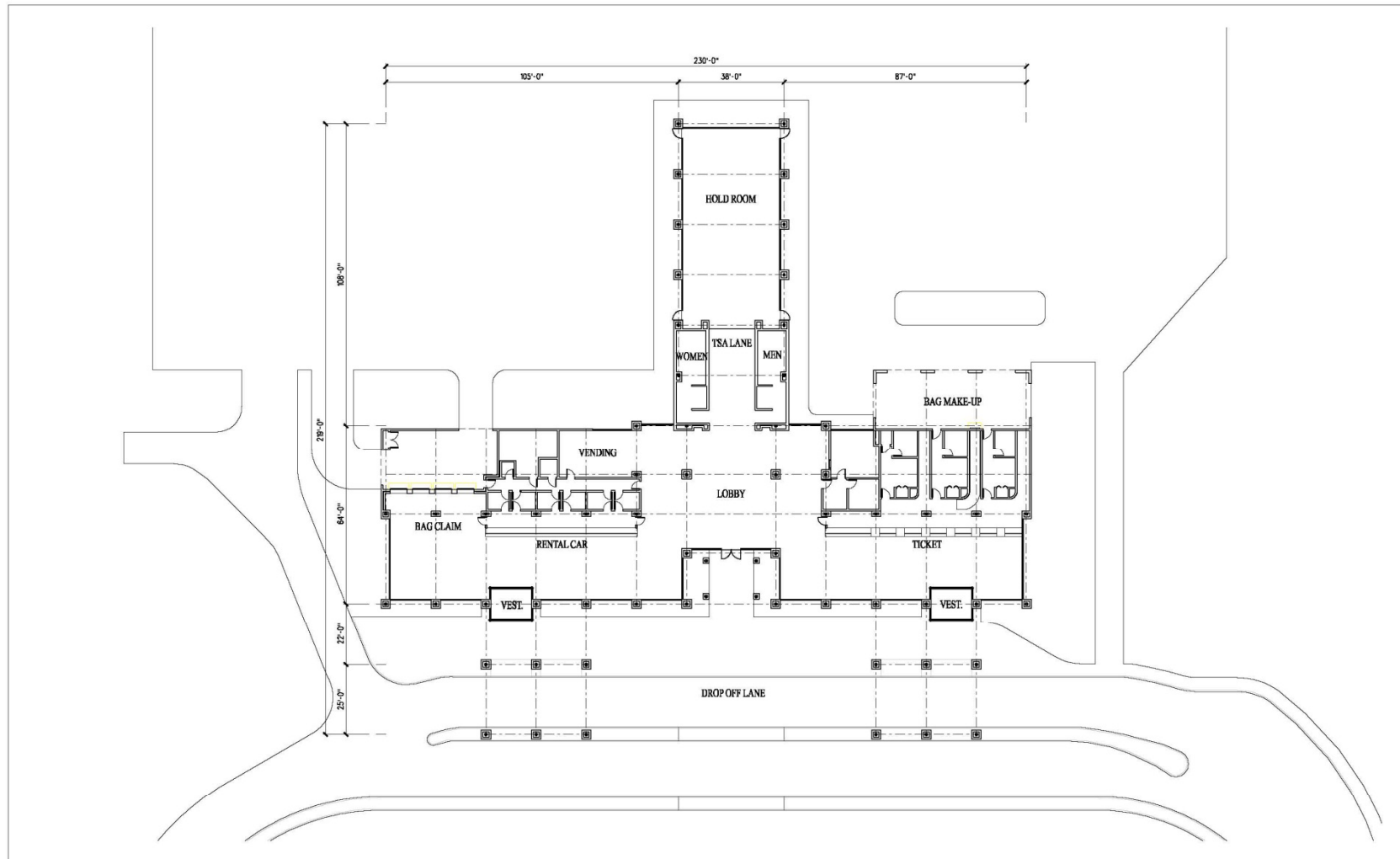
Delta Connection/Mesaba began service March 4, 2010

Delta Connection/Mesaba suspended service November 1, 2010

Hilton Head
Island Airport
Terminal Renovations

June 20, 2013

Existing Terminal Layout



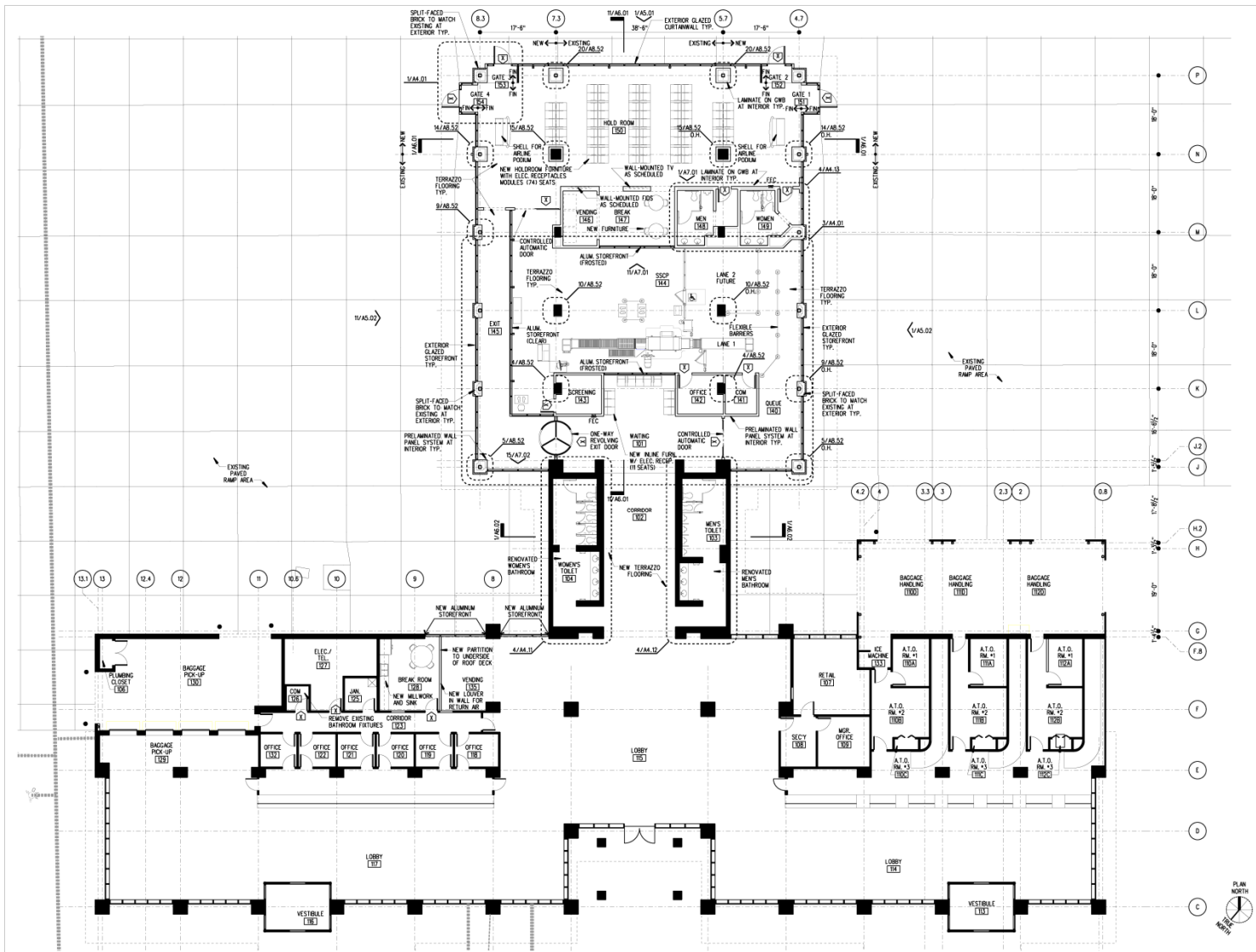
HILTON HEAD ISLAND AIRPORT
EXISTING FIRST LEVEL PLAN

 THE WILSON GROUP

TALBERT & BRIGHT

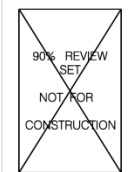
DATE: 2/5/2013
SCALE: $\frac{1}{2}'' = 1'-0''$

Terminal Renovation Layout



1 FIRST FLOOR PLAN

HILTON HEAD ISLAND AIRPORT
COMMERCIAL SERVICE TERMINAL RENOVATIONS PHASE 1
 HILTON HEAD, SOUTH CAROLINA



THE WILSON GROUP
 P.O. BOX 1015
 CHARLOTTE, NC 28202
 (704) 333-8777

CIVIL ENGINEER
TALBERT, BRIGHT & ELLINGTON
 2000 NORTH COLLEGE STREET, SUITE 101
 COLUMBIA, SC 29201
 (803) 536-8000

STRUCTURAL ENGINEER
STEWART INC.
 200 S. COLLEGE ST. SUITE 100
 CHARLOTTE, NC 28202
 (704) 334-7874 • (704) 334-7875 FAX

Mechanical, Electrical, Plumbing & Fire Protection Engineer
SABER ENGINEERING
 2802 SOUTH TRICH STREET, SUITE 200
 CHARLOTTE, NC 28208
 (704) 574-8888 • (704) 574-8888 FAX

IT / SECURITY
VERTEX TECHNOLOGY CONSULTANTS
 1627 MATTHEWS HWY. SUITE 105-200
 CHARLOTTE, NC 28207
 (704) 862-8284 • (704) 862-8285 FAX

REVISIONS

STATUS: 90% REVIEW SET
 DATE: MAY 30, 2013
 PROJECT NUMBER: 9131-000
 SHEET TITLE:

ARCHITECTURAL FIRST FLOOR PLAN

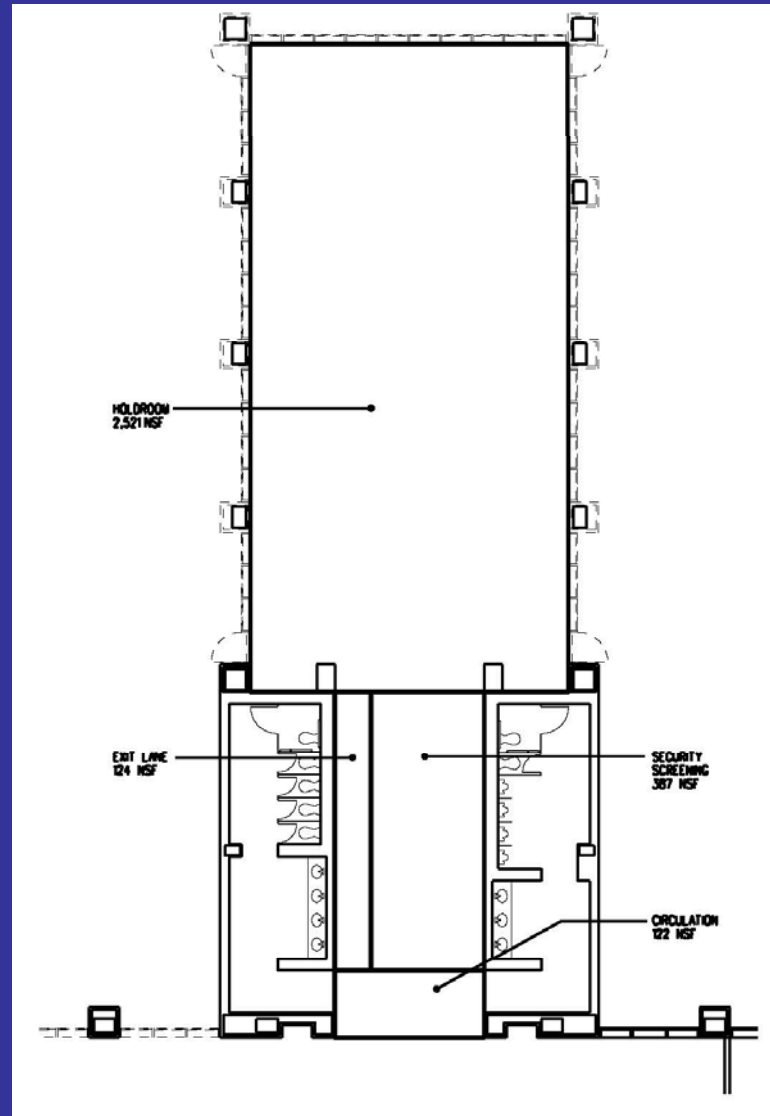
SHEET NUMBER
A2.01



16" = 1'-0"

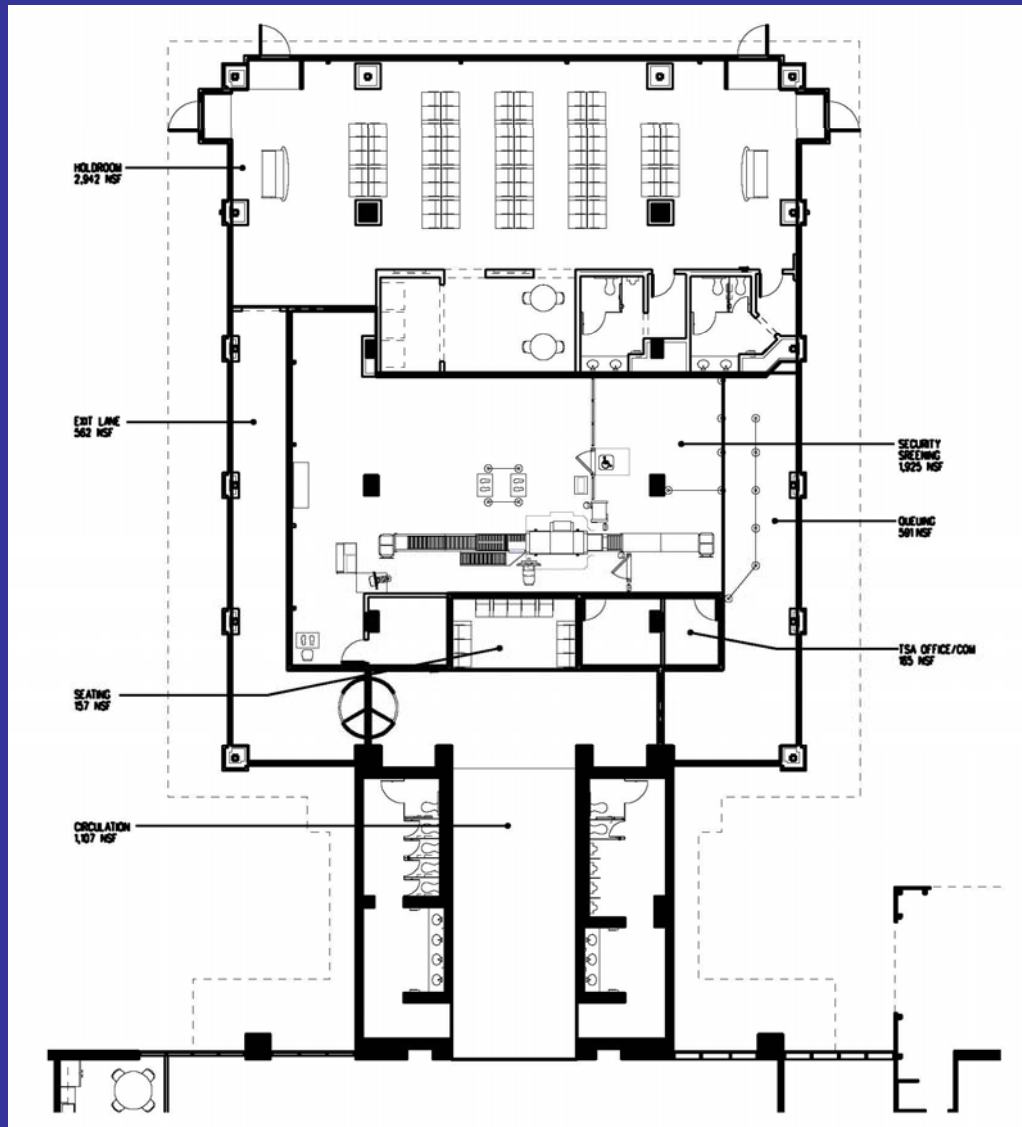
Phase I

Existing Holdroom and Restrooms



Phase I

Future Holdroom and Restrooms



Phase I Phasing Sequence

Phase 1A Temporary Holdroom and Checkpoint

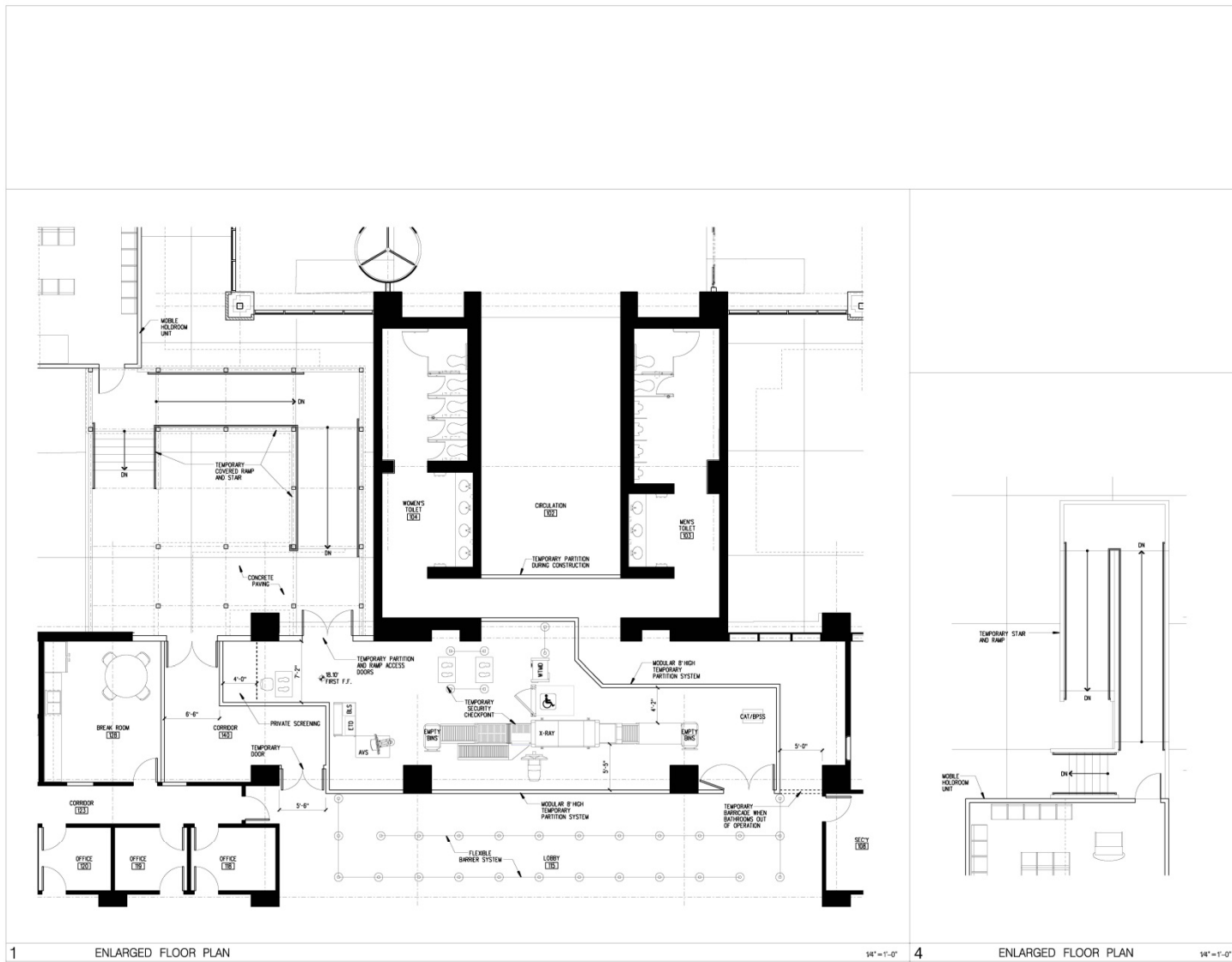
1. Construct modular holdroom with entrance and exit stairs and ramps.
2. Remove existing landscaping and provide temporary concrete slab at area entrance ramp area.
3. Demolish existing storefront at vending area and construct temporary partitions and doors. Maintain building perimeter security during demolition work.
4. Construct temporary enclosure around temporary security checkpoint.
5. Construct wall and ceiling enclosure at break room.
6. Install temporary signage.
7. Relocate GPU power at existing south east holdroom gate to aircraft parking area outside of construction zone.
8. Black out existing aircraft parking markings on ramp at east side of holdroom and provide new aircraft parking markings outside of construction zone.

Phase I Phasing Sequence

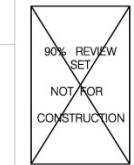
Phase 1B Checkpoint and Airline Relocation

1. Relocate TSA checkpoint equipment from existing location to new temporary checkpoint location. Work shall begin after the last outbound flight of the day and be completed overnight before the first outbound flight on the following day.
2. Relocate Airline equipment from existing location to new temporary holdroom location. Work shall begin after the last flight of the day and be completed overnight before the first flight on the following day.
3. Install temporary signage

Phase I Phasing Plan (Enlarged)



HILTON HEAD ISLAND AIRPORT
COMMERCIAL SERVICE TERMINAL RENOVATIONS PHASE I
PHASE I RENOVATION - 2013-2014



ARCHITECT
THE WILSON GROUP
1100 BEECH STREET
 CHARLOTTE, NC 28202
 (704) 333-8800

CIVIL ENGINEER
TALBERT, BRIGHT & ELLINGTON
200 PARK STREET, SUITE 300
 CHARLOTTE, NC 28202
 (803) 853-6300

STRUCTURAL ENGINEER
STEWART INC.
200 S. COLLEGE ST. SUITE 700
 CHARLOTTE, NC 28202
 (704) 334-7000 + (704) 334-7008 FAX

MECHANICAL, ELECTRICAL, PLUMBING & FIRE PROTECTION ENGINEER
SABER ENGINEERING
2803 SOUTH TRYON STREET, SUITE 200
 CHARLOTTE, NC 28203
 (704) 375-6088 + (704) 375-6282 FAX

IT/SECURITY
VERTEX TECHNOLOGY CONSULTANTS
7407 NORTHSHORE DRIVE, SUITE 100-200
 CHARLOTTE, NC 28207
 (704) 822-6204 + (704) 840-8558 FAX

REVISIONS

| | |
|--|--|
| | |
| | |
| | |
| | |
| | |

STATUS 90% REVIEW SET
 DATE MAY 30, 2013
 PROJECT NUMBER 0131-000
 SHEET TITLE ENLARGED PHASING PLANS

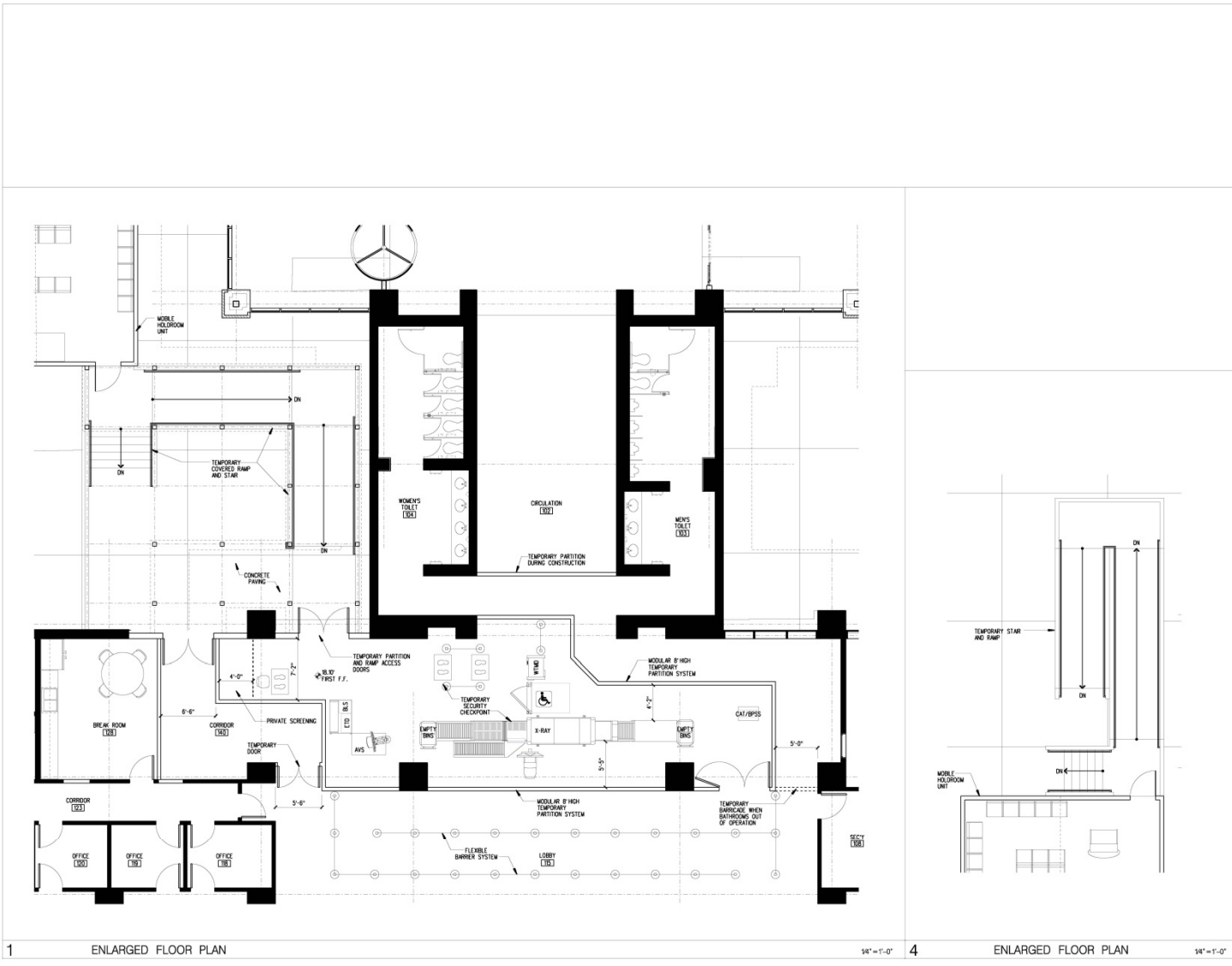
SHEET NUMBER
PH2.02

Phase I Phasing Sequence

Phase 1C Bathroom Renovation

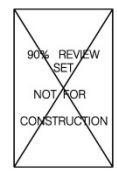
1. Locate temporary bathrooms at locations shown on phasing drawings. Inventory existing landscaping in work area and remove landscaping. Provide power, as well as water connection through existing hose bib on terminal building.
2. Construct temporary chain link fencing with privacy slat inserts.
3. Install temporary signage.
4. Construct temporary partition to block off construction area from public circulation. Remove existing plumbing and electrical fixtures, toilet partitions, accessories, wall tile and substrate, floor tile, and other items.
5. Extend sanitary sewer line.
6. Construct new bathrooms.
7. Remove temporary bathrooms. Provide new landscaping to replace removed.

Phase I Phasing Plan (Enlarged)



1 ENLARGED FLOOR PLAN 1/4" = 1'-0" 4 ENLARGED FLOOR PLAN 1/4" = 1'-0"

HILTON HEAD ISLAND AIRPORT
COMMERCIAL SERVICE TERMINAL RENOVATIONS PHASE I
PHASE I RENOVATION - 2013-2014



ARCHITECT
THE WILSON GROUP
1100 BEECH STREET
 CHARLOTTE, NC 28202
 (704) 333-8800

CIVIL ENGINEER
TALBERT, BRIGHT & ELLINGTON
200 PARK STREET, SUITE 300
 CHARLOTTE, NC 28202
 (803) 853-6300

STRUCTURAL ENGINEER
STEWART INC.
200 S. COLLEGE ST. SUITE 700
 CHARLOTTE, NC 28202
 (704) 334-7000 + (704) 334-7008 FAX

MECHANICAL, ELECTRICAL, PLUMBING & FIRE PROTECTION ENGINEER
SABER ENGINEERING
2803 SOUTH TRYON STREET, SUITE 200
 CHARLOTTE, NC 28203
 (704) 375-6088 + (704) 375-6282 FAX

IT/SECURITY
VERTEX TECHNOLOGY CONSULTANTS
7407 NORTHSHORE DRIVE, SUITE 100-200
 CHARLOTTE, NC 28207
 (704) 822-6204 + (704) 840-8558 FAX

REVISIONS

STATUS 90% REVIEW SET
 DATE MAY 30, 2013
 PROJECT NUMBER 0131-000
 SHEET TITLE ENLARGED PHASING PLANS

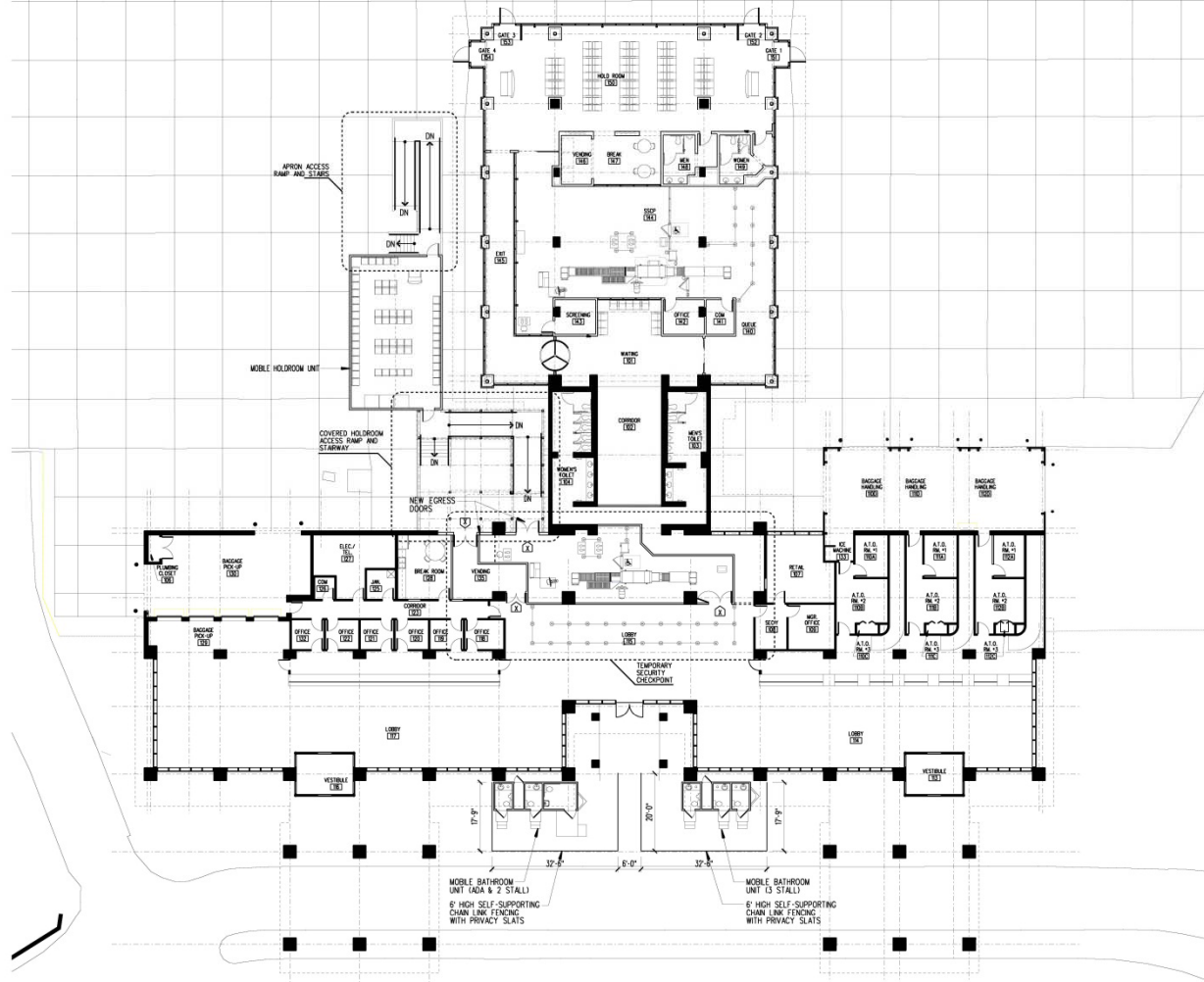
SHEET NUMBER
PH2.02

Phase I Phasing Sequence

Phase 1D Holdroom Renovation and Expansion

1. Construct temporary partition to isolate construction area from adjacent airport areas.
2. Construct temporary fencing on ramp to isolate construction area from active aircraft areas.
3. Install temporary signage as indicated on architectural drawings.
Decommission HVAC system to work area.
4. Commence with demolition and construction in accordance with the drawings.
5. Remove temporary partitions and barricades at completion of this phase.

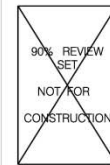
Phase I Phasing Plan



1 PHASING PLAN

1"=10'-0"

HILTON HEAD ISLAND AIRPORT
COMMERCIAL SERVICE TERMINAL RENOVATIONS PHASE I
 HILTON HEAD, SOUTH CAROLINA



ARCHITECT



THE WILSON GROUP

P. O. BOX 8010
 CHARLOTTE, NC 28208
 (704) 334-7000

CIVIL ENGINEER

TALBERT, BRIGHT & ELLINGTON

200 PARK STREET, SUITE 101
 CHARLOTTE, NC 28202
 (704) 334-7000

STRUCTURAL ENGINEER

STEWART INC.

200 S. COLLEGE ST. SUITE 700
 CHARLOTTE, NC 28202
 (704) 334-7000

MECHANICAL, ELECTRICAL, PLUMBING & FIRE PROTECTION ENGINEER

SABER ENGINEERING

2803 SOUTH TRYON STREET, SUITE 200
 CHARLOTTE, NC 28203
 (704) 375-0088

IT / SECURITY

VERTEX TECHNOLOGY CONSULTANTS

7407 MATTHEW HENRI HALL, SUITE 100-000
 CHARLOTTE, NC 28207
 (704) 362-0008

REVISIONS

| NO. | DATE | DESCRIPTION |
|-----|------|-------------|
| | | |
| | | |
| | | |
| | | |
| | | |
| | | |
| | | |
| | | |
| | | |

STATUS 90% REVIEW SET

DATE MAY 30, 2013

PROJECT NUMBER 9131-000

SHEET NUMBER

PHASING PLAN

SHEET NUMBER

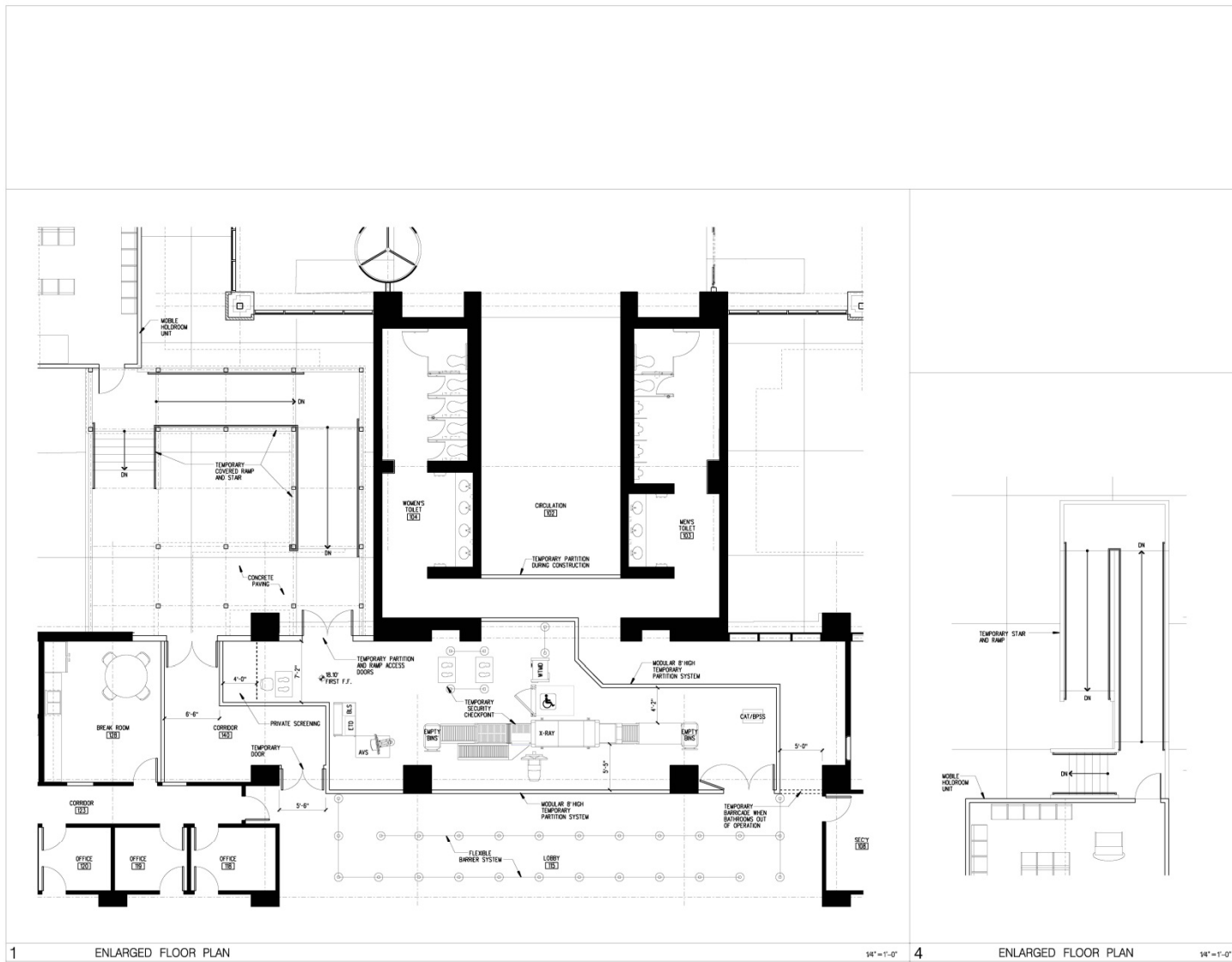
PH2.01

Phase I Phasing Sequence

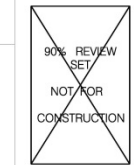
Phase 1E Checkpoint and Airline Relocation

1. Relocate TSA checkpoint equipment from temporary location to new permanent checkpoint location. Work shall begin after the last outbound flight of the day and be completed overnight before the first outbound flight on the following day.
2. Relocate Airline equipment from temporary holdroom location to new permanent location. Work shall begin after the last flight of the day and be completed overnight before the first flight on the following day.

Phase I Phasing Plan (Enlarged)



HILTON HEAD ISLAND AIRPORT
COMMERCIAL SERVICE TERMINAL RENOVATIONS PHASE I
PHASE I RENOVATIONS - 2013-2014



ARCHITECT
THE WILSON GROUP
1100 BEECH STREET
 CHARLOTTE, NC 28202
 (704) 333-8800

CIVIL ENGINEER
TALBERT, BRIGHT & ELLINGTON
200 PARK STREET, SUITE 301
 CHARLOTTE, NC 28202
 (803) 853-6300

STRUCTURAL ENGINEER
STEWART INC.
200 S. COLLEGE ST. SUITE 700
 CHARLOTTE, NC 28202
 (704) 334-7000 + (704) 334-7008 FAX

MECHANICAL, ELECTRICAL, PLUMBING & FIRE PROTECTION ENGINEER
SABER ENGINEERING
2803 SOUTH TRYON STREET, SUITE 200
 CHARLOTTE, NC 28203
 (704) 375-6088 + (704) 375-6088 FAX

IT/SECURITY
VERTEX TECHNOLOGY CONSULTANTS
7407 NORTHSHORE DRIVE, SUITE 100-200
 CHARLOTTE, NC 28207
 (704) 822-6204 + (704) 840-8558 FAX

REVISIONS

| NO. | DATE | DESCRIPTION |
|-----|------|-------------|
| | | |
| | | |
| | | |
| | | |

STATUS 90% REVIEW SET
 DATE MAY 30, 2013
 PROJECT NUMBER 0131-000
 SHEET TITLE ENLARGED PHASING PLANS

SHEET NUMBER
PH2.02

Phase I Phasing Sequence

Phase 1F Deconstruction and Apron Replacement

1. Remove temporary entrance and exit ramps, temporary partitions, temporary holdroom, and temporary security screening checkpoint.
2. Provide new storefront at exterior wall and maintain airfield security during work.
3. Remove and replace concrete apron at temporary holdroom and ramp locations.

