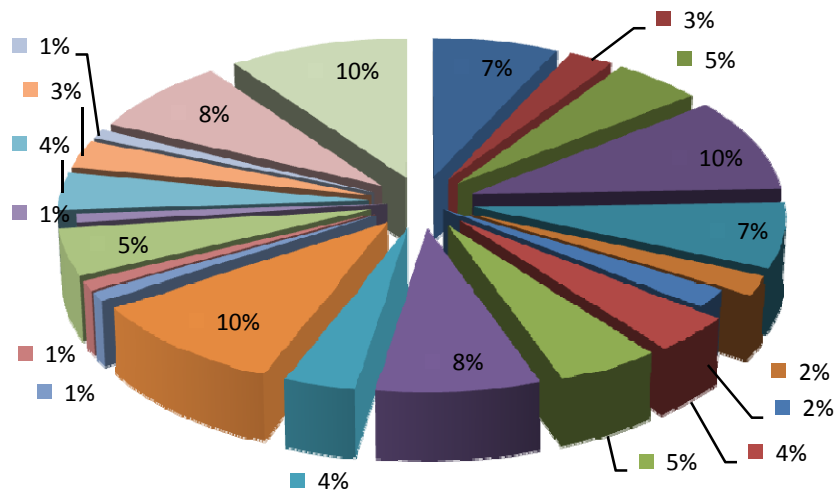


**County Council Approved Funding 2010 - 2011
Hospitality Tax Special Distribution Grant Funding - \$101,000**



- Arts Center of Coastal Carolina
- Arts Council of Beaufort County (dba ARTworks)
- Beaufort County Black Chamber of Commerce
- Beaufort Regional Chamber of Commerce
- Bluffton Historic Preservation Society
- Coastal Discovery Museum
- Daufuskie Island Historical Foundation
- Friends of Fort Fremont
- Friends of Hunting Island State Park
- Gullah Festival
- Hilton Head Concours d'Elegance, Inc.
- HHI-Bluffton Chamber of Commerce
- Hilton Head Symphony Orchestra
- Historic Beaufort Foundation
- Literacy Volunteers of the Lowcountry
- Lowcountry Estuarium
- Lowcountry Tourism Commission / Visitors Center & Museum
- Main Street Beaufort, USA
- Main Street Youth Theater
- Mitchelville Preservation Project
- Penn Center, Inc.

Hospitality Tax Special Distribution Grant

Organization	Funded H-Tax
Arts Center of Coastal Carolina	\$ 7,000
Arts Council of Beaufort County (dba ARTworks)	\$ 2,500
Beaufort County Black Chamber of Commerce	\$ 5,000
Beaufort Regional Chamber of Commerce	\$ 10,000
Bluffton Historic Preservation Society	\$ 7,000
Coastal Discovery Museum	\$ 2,000
Daufuskie Island Historical Foundation	\$ 2,000
Friends of Fort Fremont	\$ 4,000
Friends of Hunting Island State Park	\$ 5,000
Gullah Festival	\$ 8,000
Hilton Head Concours d'Elegance, Inc.	\$ 3,500
HHI-Bluffton Chamber of Commerce	\$ 10,000
Hilton Head Symphony Orchestra	\$ 1,000
Historic Beaufort Foundation	\$ 1,000
Literacy Volunteers of the Lowcountry	\$ 5,000
Lowcountry Estuarium	\$ 1,000
Lowcountry Tourism Commission / Visitors Center & Museum	\$ 4,000
Main Street Beaufort, USA	\$ 3,000
Main Street Youth Theater	\$ 1,000
Mitchelville Preservation Project	\$ 8,000
Penn Center, Inc.	\$ 10,000
The Sandbox	\$ 1,000
Yemassee Revitalization Corp.	\$ -
Totals	101,000