

COUNTY COUNCIL OF BEAUFORT COUNTY
ADMINISTRATION BUILDING
BEAUFORT COUNTY GOVERNMENT ROBERT SMALLS COMPLEX
100 RIBAUT ROAD
POST OFFICE DRAWER 1228
BEAUFORT, SOUTH CAROLINA 29901-1228
TELEPHONE: (843) 255-2180
www.bcgov.net

D. PAUL SOMMERVILLE
CHAIRMAN

GERALD W. STEWART
VICE CHAIRMAN

COUNCIL MEMBERS

RICK CAPORALE
MICHAEL E. COVERT
GERALD DAWSON
BRIAN E. FLEWELLING
STEVEN G. FOBES
YORK GLOVER, SR.
ALICE G. HOWARD
STEWART H. RODMAN
ROBERTS "TABOR" VAUX

GARY T. KUBIC
COUNTY ADMINISTRATOR

JOSHUA A. GRUBER
DEPUTY COUNTY ADMINISTRATOR
SPECIAL COUNSEL

THOMAS J. KEAVENY, II
COUNTY ATTORNEY

ASHLEY M. BENNETT
CLERK TO COUNCIL

AGENDA COUNTY COUNCIL OF BEAUFORT COUNTY CAUCUS

Monday, January 9, 2017
5:00 p.m.

Executive Conference Room, Administration Building
Beaufort County Government Robert Smalls Complex
100 Ribaut Road, Beaufort

1. CALL TO ORDER – 5:00 P.M.
2. EXECUTIVE SESSION
 - A. Receipt of legal advice relating to pending litigation
3. CAUCUS
 - A. Status of Hurricane Matthew Recovery Process
 - B. Receipt of County Administrator's Six-Week Progress Report ([backup](#))
 - C. Receipt of Deputy County Administrator / Special Counsel's Six-Week Progress Report ([backup](#))
 - D. Discussion of Consent Agenda
 - E. Discussion is Not Limited to Agenda Items
4. ADJOURNMENT





Memorandum

DATE: January 6, 2017
TO: County Council
FROM: Gary Kubic, County Administrator *Gary Kubic*
SUBJ: County Administrator's Progress Report

The following is a summary of activities that took place Monday, November 28, 2016 through Friday, January 6, 2017:

November 28, 2016

- Employee New Hire Orientation
- Joshua Gruber, Tony Criscitiello, Attorney Walter Nester and David Oliver re: Status Update / Sam's Club-Walmart
- Community Services Committee
- County Council Caucus
- County Council

November 29, 2016

- William Love and Victoria Amaya re: Disabilities and Special Needs
- Joshua Gruber, Thomas Keaveny, Gary James, SCDOR Representatives Amelia Ruple and Lisa Stokes re: Property Tax Bills / State Mandated Penalties / Conference Call
- Legislative Delegation Meeting

November 30, 2016

- Joshua Gruber and Lucas High re: Attorney General's Opinion Regarding Road Maintenance

December 1, 2016

- FEMA Conference Call re: Private Property Debris Removal

COUNTY COUNCIL

January 6, 2017

Page 2

- Airports Board
- Alicia Holland and Gary James re: County Assessor Update
- Paige Point Road Cemetery (Sheldon) Meeting
- Planning Commission Meeting

December 2, 2016

- No Scheduled Meetings

December 5, 2016

- J. L. Goodwin re: Yemassee Train Station
- Employee New Hire Orientation
- Joshua Gruber, Monica Spells, Tom Keaveny, Allison Coppage, Mary Ellen Keough, Ashley Bennett, and James Johnson re: Record Management Procedures
- Joshua Gruber and Eric Larson re: SC Ports Authority SWU Bills
- Joshua Gruber, Alicia Holland and Maria Walls re: Hurricane Matthew - Impacts on Cash Flow
- Finance Committee
- Governmental Committee

December 6, 2016

- No Scheduled Meetings

December 7, 2016

- Agenda Review with Chairman, Vice Chairman and Executive Staff re: County Council Agenda for December 12, 2016 Council Meeting
- Joshua Gruber and Shannon Loper re: Parks and Leisure Services Reorganization
- Joshua Gruber and Suzanne Gregory re: Classification and Compensation Plan
- Departmental Visit – Board of Elections and Voter Registration

December 8, 2016

- No Scheduled Meetings

December 9, 2016

- Boundary Street Construction Project Monthly Upper Management Meeting

COUNTY COUNCIL

January 6, 2016

Page 3

December 12, 2016

- Joshua Gruber, Philip Foot, Mark Roseneau, Lt. Quandara Grant, Moseley Architects Dan Mace and Todd Davis re: Detention Center Needs Assessment Review
- Executive Committee
- County Council Caucus
- County Council

December 13, 2016

- Joshua Gruber, Jon Rembold, FAA Atlanta Representatives Rusty Nealis, Aimee McCormick, Talbert Bright & Ellington Representatives, Carl Ellington, Pat Turney and Judy Elder re: St. James Baptist Church

December 14, 2016

- Joshua Gruber and DeAnn Komanecky, Reporter, *Bluffton Today* re: Meet-and- Greet

December 15, 2016

- Philip Foot, Tallulah Trice and Dave Thomas re: Animal Services Building Specs / Bids
- Maria Walls re: Office Warehouse Storage

December 16, 2016

- Joshua Gruber, Thomas Keaveny, Audra Antonacci, Gary James, Daniel Morgan and Tony Criscitiello re: Paige Point Road Cemetery Follow up Discussion
- Joshua Gruber, Monica Spells, Fred Leyda, Beaufort-Jasper Comprehensive Health Representatives Roland Gardner and Dr. LaFrance Ferguson re: DHEC and State Health Services

December 19 - 22, 2016

- Personal Leave

December 23, 2016

- Christmas Eve Holiday Observance

December 26, 2016

- Christmas Day Holiday Observance

COUNTY COUNCIL
January 6, 2016
Page 4

December 27 – 30, 2016

- Personal Leave

January 2, 2017

- New Year's Holiday Observance

January 3, 2017

- Employee New Hire Orientation
- County Council - Oath of Office
- Joshua Gruber, Maria Walls, Daniel Morgan, JoAnne Romine and George Wright re: Aumentum Software

January 4, 2017

- Agenda Review with Chairman, Vice Chairman and Executive Staff re: January 9, 2017 County Council Meeting Agenda
- Board of Voter Registration and Elections Board Meeting re: Board of Elections Expansion Project

January 5, 2017

- Design Review Board re: Animal Services Building Design

January 6, 2016

- Paige Point Road Cemetery Meeting



Memorandum

DATE: January 6, 2017

TO: County Council

FROM: Joshua A. Gruber, Deputy County Administrator

SUBJECT: Deputy County Administrator's Progress Report

The following is a summary of activities that took place Monday, November 28, 2016 through January 6, 2017:

November 28, 2016 (Monday):

- Monica Spells, Alicia Holland and Phillip Foot re: Bi-weekly Project Review Status Update
- Gary Kubic, Tony Criscitiello, Attorney Walter Nester and David Oliver re: Status Update / Sam's Club-Walmart
- Phil Foot and Mark Roseneau re: Maintenance Issues
- Community Services Committee
- County Council Caucus
- County Council

November 29, 2016 (Tuesday):

- Maria Walls re: Treasurer's Office Update
- Suzanne Gregory re: Personnel Issues
- Suzanne Gregory and Colin Kinton re: Compensation Study
- Suzanne Gregory and Phil Foot re: Compensation Study – Building Codes
- Gary Kubic, Tom Keaveny, Gary James, SCDOR Representatives Amelia Ruple and Lisa Stokes re: Property Tax Bills / State Mandated Penalties / Conference Call
- Legislative Delegation Meeting

November 30, 2016 (Wednesday):

- Gary Kubic and Lucas High re: Attorney General's Opinion Regarding Road Maintenance

COUNTY COUNCIL

January 6, 2017

Page 2

- Bluffton Health Clinic Presentation by Taylor Lee, Director and Minnie Bullock, Clinic Director

December 1, 2016 (Thursday):

- FEMA Conference Call re: Private Property Debris Removal
- Paige Point Road Cemetery (Sheldon) Meeting
- SCAC Legislative Committee, Charleston, SC

December 2, 2016 (Friday):

- Departmental Orientation Session for Newly Elected County Council Members Mike Covert and York Glover
- SCAC Legislative Committee, Charleston, SC

December 5, 2016 (Monday):

- Gary Kubic, Monica Spells, Tom Keaveny, Allison Coppage, Mary Ellen Keough Ashley Bennett and James Johnson re: Records Management Procedures
- Gary Kubic and Eric Larson re: SC Ports Authority SWU Bills
- Gary Kubic, Alicia Holland and Maria Walls re: Hurricane Matthew – Impacts on Cash Flow
- Finance Committee
- Governmental Committee

December 6, 2016 (Tuesday):

- Treasurer's Office Debt Setoff Protest Hearings

December 7, 2016 (Wednesday):

- Agenda Review with Chairman, Vice Chairman and Executive Staff re: December 12, 2016 County Council Meeting Agenda
- Bluffton-Hilton Head Island Chamber of Commerce Leadership Presentation
- Gary Kubic and Shannon Loper re: Parks and Leisure Services Reorganization
- Gary Kubic and Suzanne Gregory re: Classification and Compensation Plan

December 8, 2016 (Thursday):

- Judge Fulp re: Personnel Matter
- Council Member Rick Caporale, Rob McFee, The Gatherings Representatives Judy Hadley, Jordan Berliner and Joe DaVito re: The Gatherings Fence Easements

COUNTY COUNCIL

January 6, 2017

Page 3

December 9, 2016 (Friday):

- Boundary Street Construction Project Monthly Upper Management Meeting
- Suzanne Gregory and Gary James re: Personnel Matter

December 12, 2016 (Monday):

- Monica Spells, Alicia Holland and Phillip Foot re: Bi-weekly Project Review Status Update
- Tom Keaveny, Allison Coppage, Rob McFee, David Wilhelm and Eric Larson re: Attorney General's Opinion – Roadway Maintenance Responsibilities
- Gary Kubic, Phil Foot, Mark Roseneau, Lt. Quandara Grant, Mosley Architects Dan Mace and Todd Davis re: Detention Center Needs Assessment Review
- Executive Committee
- County Council Caucus
- County Council

December 13, 2016 (Tuesday):

- Gary Kubic, Jon Rembold, FAA Atlanta Representatives Rusty Nealis, Aimee McCormick, Talbert Bright & Ellington Representatives Carl Ellington, Pat Turney and Judy Elder, Atlanta, GA re: St. James Baptist Church,

December 14, 2016 (Wednesday):

- Gary Kubic and DeAnn Komanecky, Reporter, *Bluffton Today* re: Meet-and-Greet

December 15, 2016 (Thursday):

- Rob McFee and Mark Roseneau re: County Facilities Repairs / Maintenance / Replacements – 3-5 Year Timeline – Prioritization / Costs for Repairs
- Gary Kubic, Phil Foot, Rob McFee, Tallulah Trice, Dave Thomas, Andrea Atherton re: Animal Services Building Specifications / Bids

December 16, 2016 (Friday):

- Monica Spells, James Johnson, Mark Roseneau and Dan Morgan re: IT / GIS Relocation
- Gary Kubic, Tom Keaveny, Audra Antonacci, Gary James, Dan Morgan and Tony Criscitiello re: Paige Point Road Cemetery Follow-up Discussion
- Lillian Aquino re: Verizon – Smart Cities
- Gary Kubic, Monica Spells, Fred Leyda, Beaufort-Jasper Comprehensive Health Representatives Roland Gardner and Dr. LaFrance Ferguson re: DHEC and State Health Services

COUNTY COUNCIL

January 6, 2017

Page 4

December 19, 2016 (Monday):

- Tom Keaveny, Rob McFee, Shannon Loper, Andrea Atherton re: Buckwalter – Polished Concrete Repairs
- Council Member Jerry Stewart, Maria Walls and Alicia Holland re: Budgetary Outlook – 3-5 Years
- Council Member Jerry Stewart, Jerri Roseneau and Alicia Holland re: Budgetary Outlook – 3-5 Years
- Gary James and Kimberly Chesney re: Mobile Home Issues
- Natural Resources Committee
- Public Facilities Committee

December 20, 2016 (Tuesday):

- Maria Walls, Alicia Holland, Phil Foot, Jon Rembold, Shannon Loper, Tallulah Trice, Edra Stephenson and Chuck Atkinson re: Electronic Processing of Payments - Kiosks
- Maria Walls, Alicia Holland and Shirley Freeman, Director of Finance/Administration, Town of Bluffton re: MCIP Funds Review with the Town of Bluffton

December 21, 2016 (Wednesday):

- Council Member Jerry Stewart, Jim Beckert and Alicia Holland re: Budgetary Outlook – 3-5 Years

December 22, 2016 (Thursday):

- Beaufort Office Hours

December 23 and 26, 2016 (Friday and Monday):

- Christmas Eve and Christmas Day Holiday Observance

December 27, 2016 (Tuesday):

- Hillary Austin and Doug Carol re: Enmark Rebranding
- Tom Keaveny, Rob McFee and Stephanie Geer of Mashburn Construction Surety Company re: Buckwalter Project

December 28, 2016 (Wednesday):

- Attorney Walter Nester re: Bluffton Gateway Project

COUNTY COUNCIL

January 6, 2017

Page 5

- Tom Keaveny and Tony Criscitiello re: Hilton Head National Project

December 29, 2016 (Thursday):

- Suzanne Gregory re: Annual Personnel Review Options
- Beaufort Office Hours

December 30, 2016 (Friday):

- Personal Leave Day

January 2, 2017 (Monday):

- New Year's Holiday Observance

January 3, 2017 (Tuesday):

- County Council - Oath of Office
- Gary Kubic, Maria Walls, Daniel Morgan, George Wright and Joanne Romine re: Aumentum Software

January 4, 2017 (Wednesday):

- Agenda review with Chairman, Vice Chairman and Executive Staff re: County Council Meeting Agenda for January 9, 2017 Meeting
- Gary Kubic and Mark Roseneau re: Review of Board of Registration / Election Plans
- Beaufort Regional Chamber of Commerce Legislative Luncheon
- Gary Kubic re: Board of Voter Registration and Elections Board Meeting / Office Space

January 5, 2017 (Thursday):

- Rob McFee, Colin Kinton and Eric Larson re: Engineering Team Coordination Update
- Jim Beckert re: Vehicle Tax Bill Process

January 6, 2017 (Friday):

- Phil Foot, Rob McFee, Donna Ownby and Andrea Atherton re: New EMS Stations – Locations
- Lillian Aquino, Verizon Representative re: Soofa - Solar Charging Benches
- Paige Point Road Cemetery Meeting

ADD-ONS

The document(s) herein were provided to Council for information and/or discussion after release of the official agenda and backup items.

Topic: Hurricane Matthew Recovery Briefing
Date Submitted: January 9, 2017
Submitted By: Eric Larson
Venue: County Council Caucus

Topic: Hurricane Matthew Recovery Briefing
Date Submitted: January 9, 2017
Submitted By: Eric Larson
Venue: County Council Caucus

Beaufort County Hurricane Matthew Recovery Briefing January 9, 2017 (Day 94)

A Report to County Council



Outline

- Debris Removal
 - Road (public and private)
 - Marine
 - Stormwater
- Damage Assessment
 - Private Property
 - County Facilities
- Public Assistance funding
- Individual Assistance funding
 - Human Services assistance to the public
- Status of County Operations



Public Road Debris

- As of January 5, 2017:
 - 1,173,178 CY collected from Public Roads
 - 326,822 CY estimated remaining *
 - As high as 122 trucks operating; currently 56
 - 60,262 hanging limbs removed
 - 3,035 leaning trees removed
 - Stump inventory is complete
- 4 Debris Management Sites
- 65th day of operation
- Work also includes 27 school campuses and the public roads in 3 municipal areas
- 1st Pass was completed on 12/2/16
- 2nd Pass was considered complete on 12/23/16
- Still on schedule to be complete by end of Feb.

* Based on 1.5 mil. CY to be collected. Does not include stumps, SW and Marine Debris sites



BEAUFORT COUNTY, SC

FEMA-4288-DR | SC - HURRICANE MATTHEW

ROW COLLECTION

Daily Totals

Daily Statistics (01/05/2017)

CuYds Collected Vs. Remaining

Total Cubic Yards

14,847

VEGETATIVE/WOODY

14,847

Total Loads

309

Total Trucks Operating

56

Average CuYds Per Load

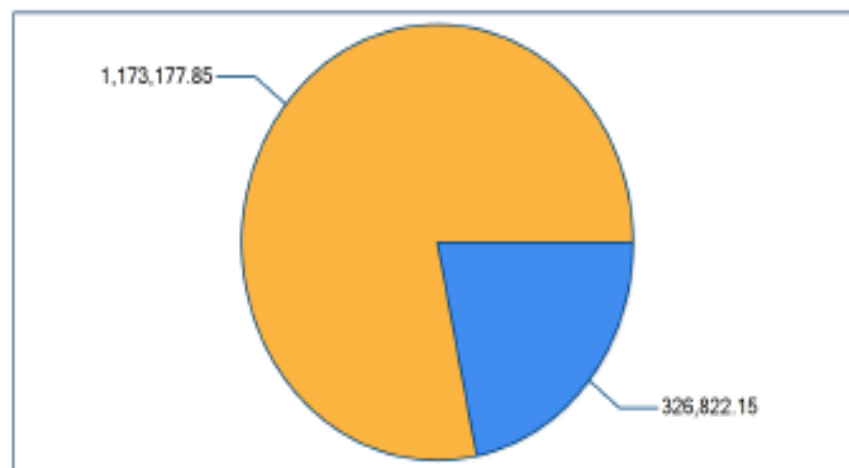
48.05

Average Load Call

75.34%

Disposal Sites in Operation

4



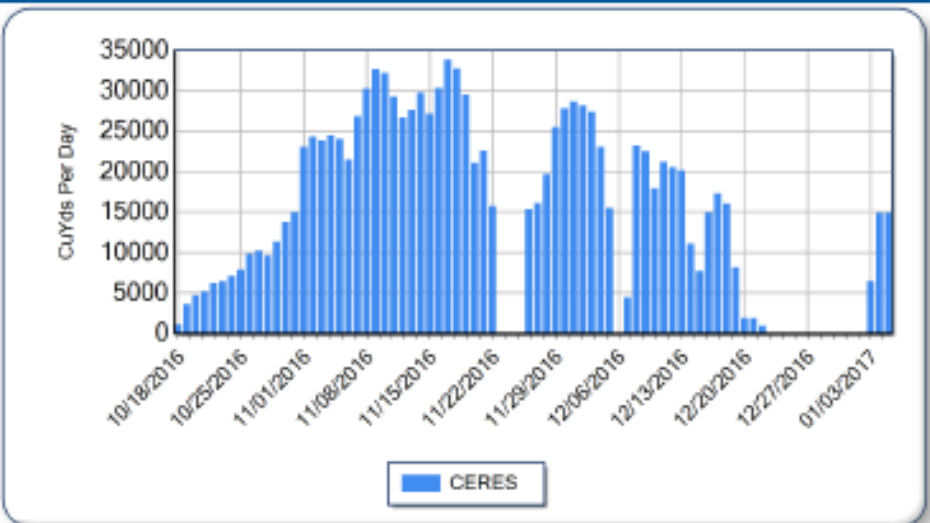
Est. Remaining Total Collected



Project Totals

Job to Date Statistics **Total CuYds Per Day**

Total Cubic Yards	1,173,178
Total Loads	24,362
Days Operational	65
Average Cubic Yards Per Load	48
Maximum Day Cubic Yards	33,776
Average Day Cubic Yards	18,049
Average Load Call	78.86%

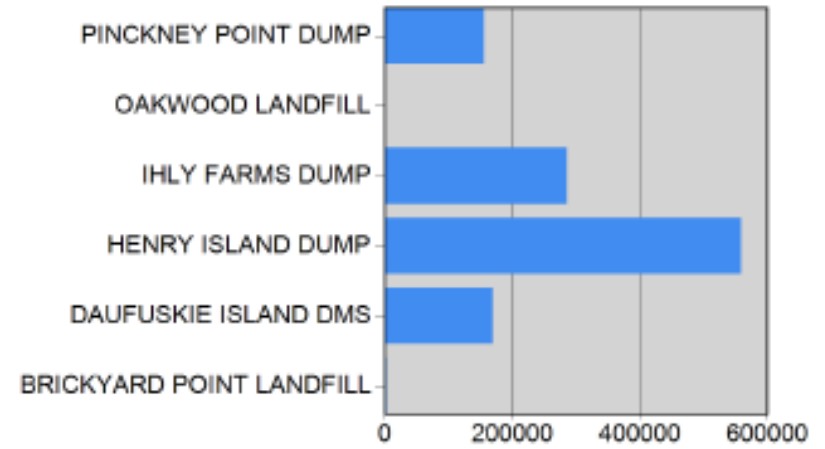


Debris Management Sites

Today and Job to Date DMS Statistics

DMS CuYds To Date

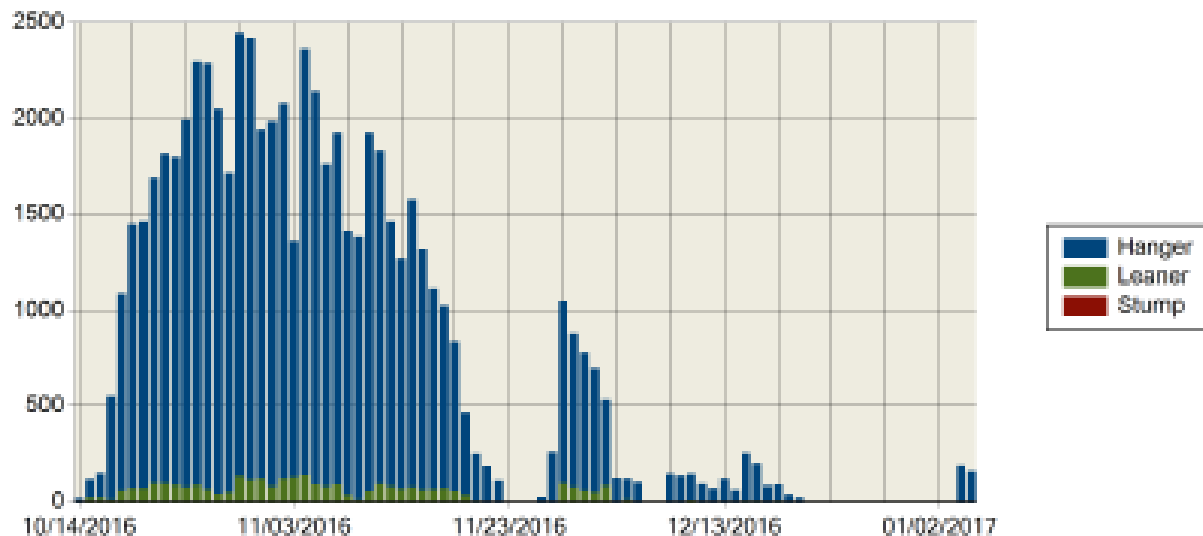
Site Name	Today	JTD
BRICKYARD POINT LANDFILL	0.0	3,251.3
CONSTRUCTION&DEMOLITION	0.0	3,251.3
DAUFUSKIE ISLAND DMS	6,267.8	169,382.4
VEGETATIVE/WOODY	6,267.8	169,382.4
HENRY ISLAND DUMP	4,931.8	559,425.5
VEGETATIVE/WOODY	4,931.8	559,425.5
IHLY FARMS DUMP	844.0	285,535.5
VEGETATIVE/WOODY	844.0	285,535.5
OAKWOOD LANDFILL	0.0	380.1
CONSTRUCTION&DEMOLITION	0.0	380.1
PINCKNEY POINT DUMP	2,803.9	155,203.3
VEGETATIVE/WOODY	2,803.9	155,203.3



BEAUFORT COUNTY, SC

FEMA-4286-DR | SC - HURRICANE MATTHEW
ROW COLLECTION

Hazard Removals By Day



Today's Hazard Removals

Total Crews In the Field	2
Hangers	Totals
1A-HANGER REMOVAL PER TREE	155
Leaners	Totals
Stumps	Totals

Cumulative Hazard Removal

	<u>Progress to Date</u>		
	<u>Estimated</u>	<u>Cumulated</u>	<u>Percent</u>
Hanger	0	60,262	0.0 %
Leaner	0	3,035	0.0 %
Stump	0	0	0.0 %
Total	0	63,297	

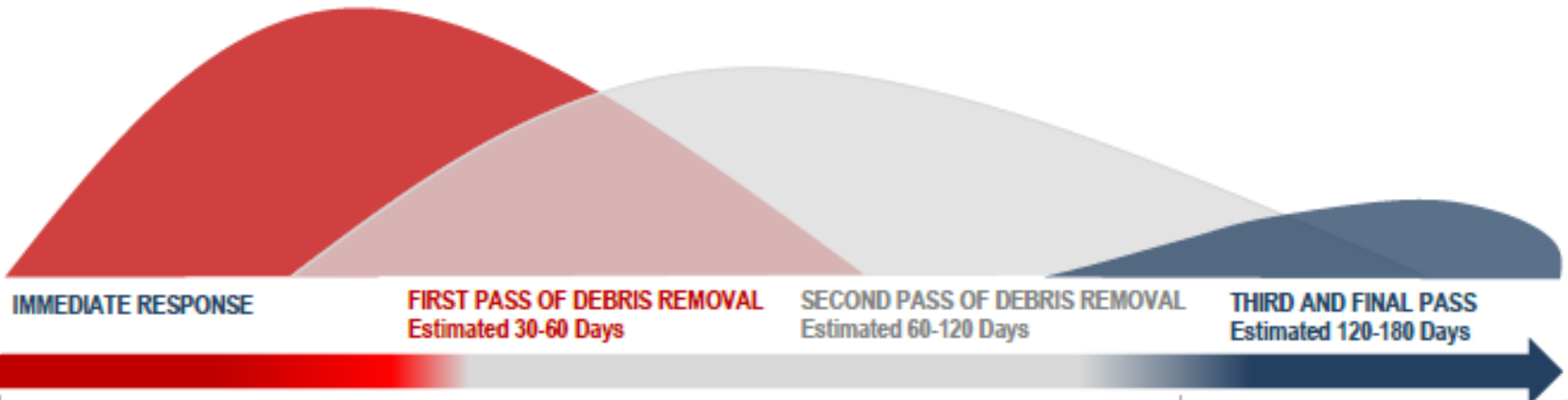
Productivity Statistics

Hanger Removal Maximum	2,313
Hanger Removal Average	899
Hanger Removal Minimum	2
Leaner Removal Maximum	138
Leaner Removal Average	51
Leaner Removal Minimum	1
Stump Removal Maximum	0
Stump Removal Average	0
Stump Removal Minimum	0



Schedule

Matthew
Impact
10.8.16



IMMEDIATE RESPONSE

Activities included:

- Emergency Road Clearing (Push)
- Conduct preliminary damage assessments.
- Identify and assess debris management site
- County activated contracts with pre-positioned debris hauling contractor (Ceres Environmental) and debris monitoring contractors (Tetra Tech)
- Request for Public Assistance made to FEMA through South Carolina Emergency Management Department

FIRST PASS OF DEBRIS REMOVAL Estimated 30-60 Days

Activities include:

- Debris Contractor Ceres has initiated debris removal activities
- All debris removal is being monitored and documented in accordance with FEMA regulations
- Dangerous hanging limbs affecting the public Rights-of-Way are being removed
- Hazardous leaning trees affecting the public rights-of-way are being removed
- Beaufort County has requested a waiver from FEMA to allow debris collection from Rights of Way on Private roads

SECOND PASS OF DEBRIS REMOVAL Estimated 60-120 Days

Activities include:

- Hanging limb and leaning tree removal will be completed
- Contractors will make a second pass of debris removal on all roads
- The County will identify the need for additional debris removal programs ;
 - Waterways
 - Derelict Vessels
 - Parks
- Damage complaints will be signed-off when rectified

THIRD AND FINAL PASS Estimated 120-180 Days

Activities include:

- Third and final pass of debris removal will be made
- Remaining damage complaints will be closed out
- Debris management sites will be remediated
- Contractors will be released

Public and Private Road Debris

- Residents are asked to sort Class 1 and Class 2 debris into separate piles on the right-of-way at their residence for collection. The separation categories for debris placed at rights-of-way are:
 - Class 1 waste – includes small limbs, leaves and landscape trimmings.
 - Class 2 waste – includes building materials, drywall, lumber, carpet, furniture, mattresses and plumbing items.
- The County advises residents not to block fire hydrants, stormwater ditches or utility boxes when placing items at the right-of-way



IMPORTANT NOTICE TO THE PUBLIC

- ALL debris needs to be out on the edge of the road NOW. Once 3rd and final pass occurs on the street, the crews WILL NOT return. Our monitoring firms are documenting which roads have been serviced and the County will not be able to send the crews back for a “4th pass”
- ONLY storm debris from October 7 is allowed. CERES is seeing a trend of newer, “green” debris from routine landscape maintenance being set out for collection.



Convenience Centers

- All Beaufort County Convenience Centers are accepting limited amounts of non-storm generated yard waste (Class 1)
- Class 1 waste accepted at Convenience Centers includes small limbs and landscape trimmings. No leaves will be accepted at Convenience Centers. Capacity for this material is limited. No trailers or large loads will be accepted. Residents who wish to drop off waste in bags should use paper bags. Plastic bags are prohibited



Private Road Debris (PPDR)

- On October 29, 2016, FEMA approved the County's request to remove debris from private roads
- As of January 3, 2017, FEMA has approved private roads in 70 communities for PPDR. 5 others are pending approval. 4 to be submitted. 3 withdrawals.
- As of January 5, 2017, the "first pass" has been completed in 61 of the 70 communities; 54 have had a "second pass"



PPDR as of Jan. 3, 2017

- Battery Point
- Battery Townhomes
- Bay Pointe Vistas
- Beachfield
- Bermuda Bluff
- Bloody Point
- Blue Gray Estate
- Bluffton Park
- Callawassie Island
- Cane Island Retreat
- Cat Island
- Cedar Cove at Haig Point
- Cheechessee Creek
- City Walk
- Coffin Point Plantation
- Coosaw Point
- Dataw Island
- Distant Island
- Edgefield
- Fernlakes
- Fripp Island POA
- Haig Point Club
- Harbor Island
- Heritage Lakes
- Heyward Point
- Hidden Lakes
- Inlet @ Bermuda Bluff
- Liberty Point
- Live Oaks at Battery Creek
- Marshes at Lady's Island
- May River Plantation
- May River Preserve
- Melrose Resort
- Meridian Cottages
- Moss Creek
- Oakridge
- Olde Tabby Park
- Oldfield
- Overlook at Battery Creek
- Picket Fences
- Pinckney Retreat
- Pine Forest Village
- Pleasant Farm
- Pleasant Point
- Polawana Island
- Port Royal Landing
- Ribaut Island
- River House Plantation
- River Oaks
- Rose Dhu Creek
- Rose Hill Plantation
- Sandy Pointe
- Shady Glen
- Shammy Creek Landing
- Spring Island
- Stock Farm
- Tabby Road
- Tansi Village
- The Crescent
- The Farm at Buckwalter
- Traditions at Old Carolina
- Tuxedo Park
- Victoria Bluff
- Vivian's Island
- Walling Grove
- Wellstone at Bluffton
- Willow Point
- Windmill Harbour
- Wrights Point
- Yacht Club Estate



Pending PPDR 1/3/17

- Fig Beach Club
- Shadow Moss
- Islands of Beaufort
- Mariner Horizontal Property
- The Preserve at Woodbridge
- Withdrawn:
 - Hampton Hall Club
 - Old Point Townhouse Condo Assoc.
 - Westgate Circle
- Yet to be submitted to FEMA:
 - Cedar Lake
 - Celadon
 - Colleton River
 - Palmetto Place

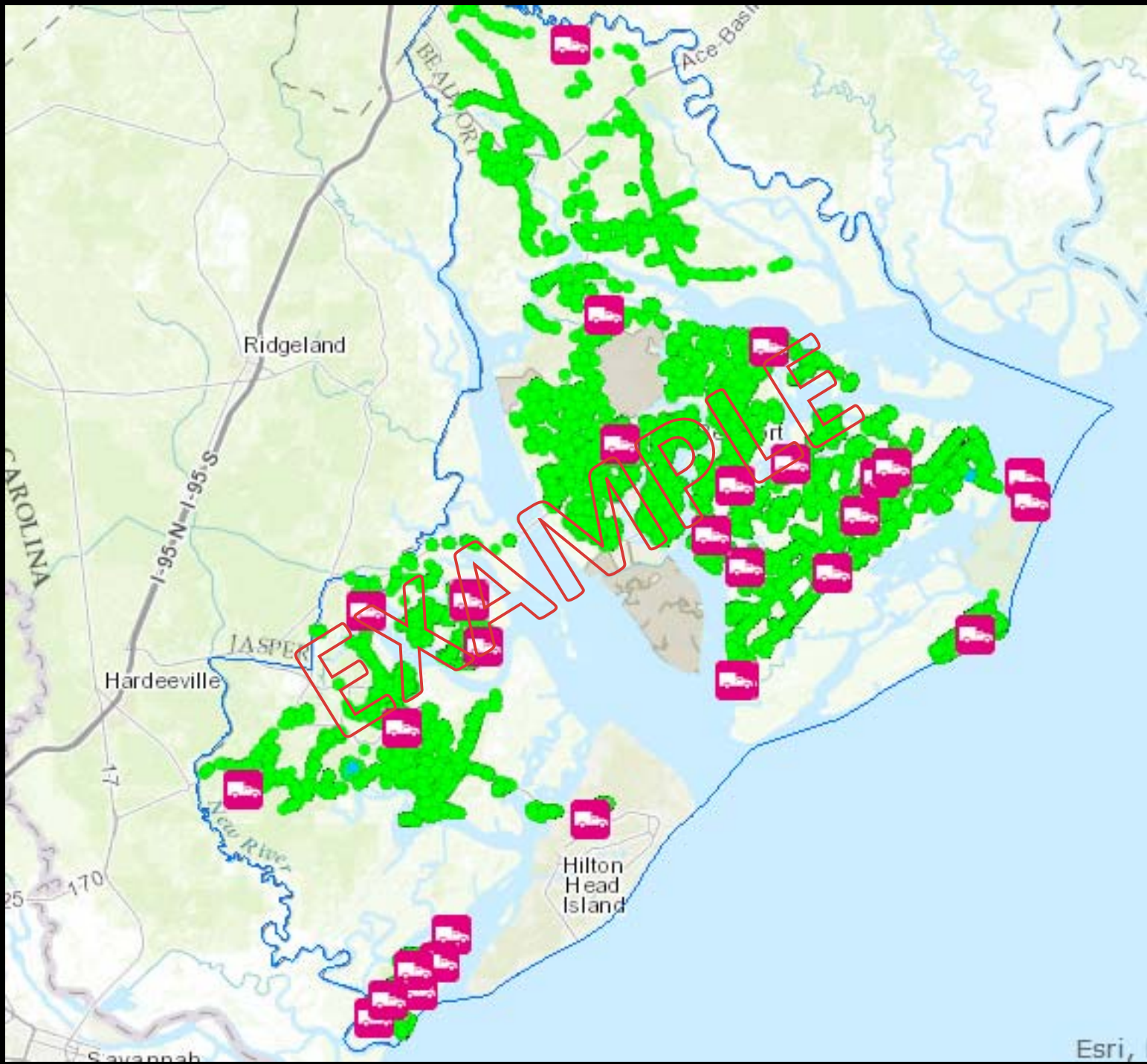


PPDR status

No:	Name:	Approval:	Start:	1st Pass	2nd Pass	3rd Pass	Complete:
1	Inlet at Bermuda Bluff	11/04/16	11/04/16	11/05/16	12/10/2016		
2	Distant Island	11/04/16	11/04/16	12/01/16	12/14/2016		
3	Cane Island Retreat	11/04/16	11/05/16	11/08/16	12/4/2016		
4	Callawassie Island	11/05/16	11/05/16	11/23/16	12/22/2016		
5	Fripp Island	11/05/16	11/06/16	12/18/16			
6	Pinckney Retreat	11/05/16	11/07/16	11/10/16	12/4/2016		
7	Picket Fences	11/05/16	11/06/16	11/09/16	12/9/2016		
8	Port Royal Landing	11/05/16	11/05/16	11/07/16	12/16/2016		
9	Willow Point	11/05/16	11/05/16	11/07/16	12/9/2016		
10	Overlook @Battery Creek	11/07/16	11/08/16	11/09/16	12/9/2016		
11	Marshes @ Lady's Island	11/07/16	11/08/16	11/08/16	12/10/2016		
12	City Walk	11/07/16	11/08/16	11/12/16	12/5/2016		
13	Rose Hill	11/07/16	11/09/16	11/30/16	12/17/2016		
14	Yacht Club Estates	11/07/16	11/08/16	11/09/16	12/9/2016		
15	Hidden Lakes	11/07/16	11/08/16	11/19/16	12/18/2016		
16	Fern Lakes	11/07/16	11/09/16	12/03/16	12/18/2016		
17	Dataw Island	11/07/16	11/09/16	11/19/16	12/21/2016		
18	River Oaks	11/07/16	11/08/16	11/27/16	12/9/2016		
19	Farm at Buckwalter	11/08/16	11/10/16	11/17/16	12/16/2016		
20	Spring Island	11/08/16	11/10/16	12/18/16			
21	Walling Grove	11/08/16	11/09/16	11/18/16	12/9/2016		
22	Ribaut Island Regime	11/08/16	11/09/16	11/10/16	12/09//2016		
23	Windmill Harbor	11/09/16	11/10/16	11/18/16	12/5/2016		
24	Shammy Creek	11/09/16	11/09/16	11/12/16	12/17/2016		
25	Bloody Point	11/09/16	11/10/16				
26	Edgefield	11/09/16	11/11/16	11/19/16	12/9/2016		
27	Wrights Point	11/09/16	11/10/16	11/13/16	12/5/2016		
28	Pine Forest	11/09/16	11/11/16	11/27/16	12/18/2016		
29	Tansi Village	11/09/16	11/10/16	11/17/16	12/4/2016		
30	Tuxedo Park	11/09/16	11/10/16	11/17/16	12/11/2016		
31	Haig Point	11/09/16	11/10/16				
32	Live Oaks at Battery Creek	11/10/16	11/11/16	11/16/16	12/5/2016		
33	Vivians Island	11/10/16	11/10/16	11/13/16	12/17/2016		
34	Battery Point	11/10/16	11/11/16	11/14/16	12/12/2016		
35	Pleasant Point	11/10/16	11/10/16	11/13/16	12/18/2016		
36	Stock Farm	11/14/16	11/15/16	11/17/16	12/12/2016		
37	Rose Dhu Creek	11/14/16	11/15/16	11/27/16	12/18/2016		
38	Melrose Property Owners	11/14/16	11/15/16				
39	Victoria Bluff	11/14/16	11/15/16	11/28/16	12/18/2016		

PPDR status

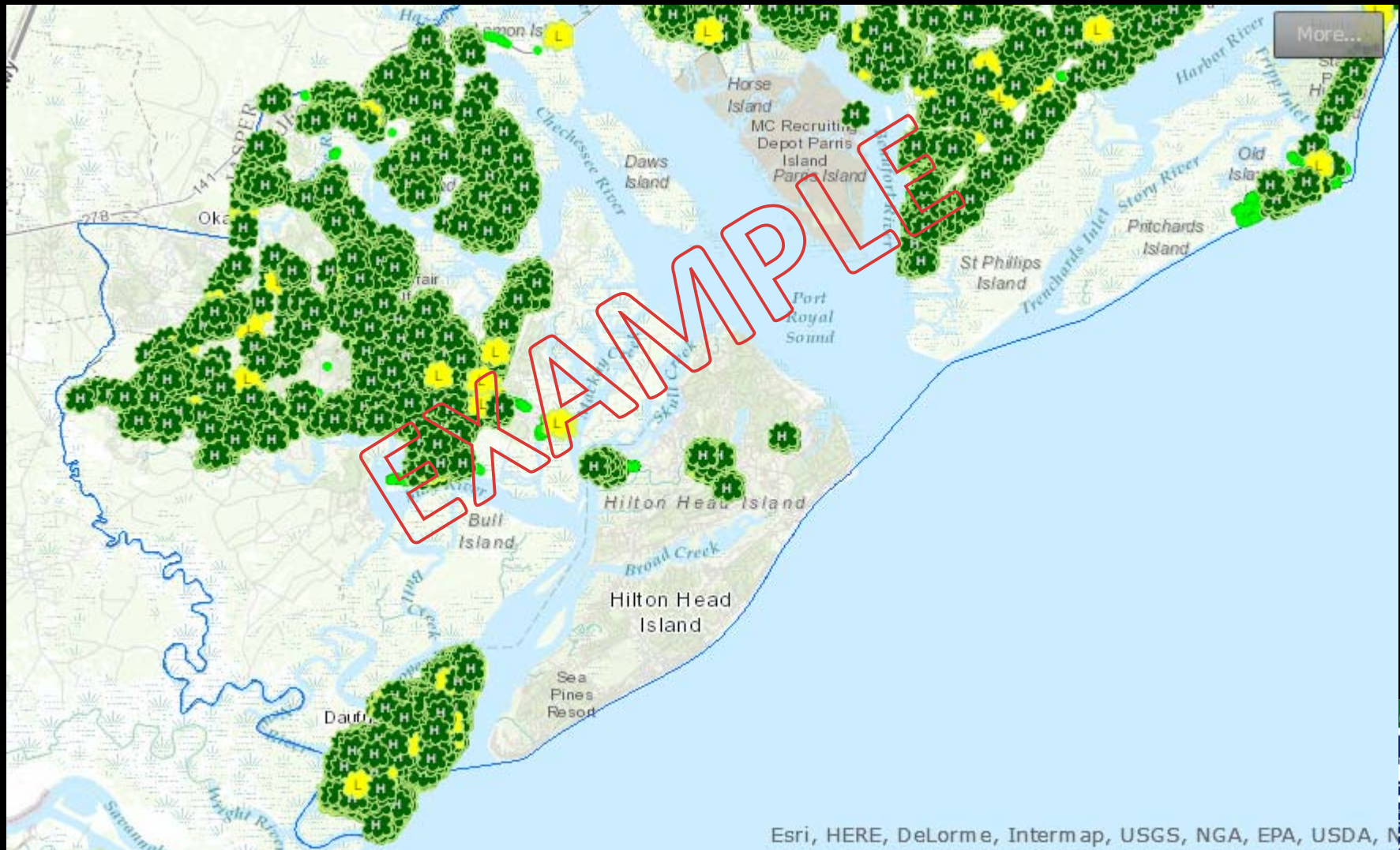
No:	Name:	Approval:	Start:	1st Pass	2nd Pass	3rd Pass	Complete:
40	Heyward Point	11/14/16	11/15/16	11/28/16	12/11/2016		
41	Bermuda Bluff	11/14/16	11/15/16	11/28/16	12/17/2016		
42	The Crescent	11/14/16	11/15/16	12/01/16	12/17/2016		
43	Polowana Island Comm	11/21/16	11/21/16	12/03/16	12/17/2016		
44	Heritage Lakes	11/21/16	11/21/16	12/09/16	12/22/2016		
45	Tabby Roads Community	11/21/16	11/21/16	12/03/16	12/17/2016		
46	Traditions at Old Carolina	11/21/16	11/21/16	11/29/16	12/12/2016		
47	Bluffton Park	11/21/16	11/21/16	11/29/16	12/12/2016		
48	Sandy Point	11/21/16	11/21/16	11/29/16	12/18/2016		
49	May River Plantation	11/21/16	11/21/16	11/29/16	12/21/2016		
50	River House Plantation	11/21/16	11/21/16	12/03/16	12/18/2016		
51	Coffin Point Plantation	11/21/16	11/21/16	12/19/16			
52	Liberty Point	11/21/16	11/21/16	11/23/16	12/4/2016		
53	May River Preserve	11/28/16	11/29/16	12/04/16	12/18/2016		
54	Harbor Island	11/21/16	11/29/16	12/16/16	12/20/2016		
55	Cat Island	11/15/16	11/16/16	11/28/16	12/11/2016		
56	Pleasant Farm	12/04/16	12/04/16	12/10/16	12/20/2016		
57	Bay pointe vistas	12/04/16	12/08/16	12/12/16	12/19/2016		
58	Wellstone 2 bluffton	12/04/16	12/08/16	12/09/16	12/19/2016		
59	Coosaw Point	12/07/16	12/08/16	12/10/16	12/18/2016		
60	Chechessee Creek	12/07/16	12/08/16	12/17/16			
61	Blue Gray Estates	12/07/16	12/09/16	12/12/16	12/17/2016		
62	Shady Glenn	12/08/16	12/09/16	12/10/16	12/22/2016		
63	Moss Creek	12/09/16	12/10/16	12/19/16			
64	Islands of Beaufort	12/17/16	12/19/16	01/04/17			
65	Battery Town Homes	12/17/16	12/19/16				
66	Cedar Cove at Hage Point	12/17/16	12/19/16				
67	Old Tabby Park	12/19/16					
68	Merridian Cottages	12/19/16					
69	Oldfield Club	01/03/17	01/04/17				
70	Beach Field	01/03/17	01/04/17				
71	Oakridge	01/03/17	01/04/17				



Esri

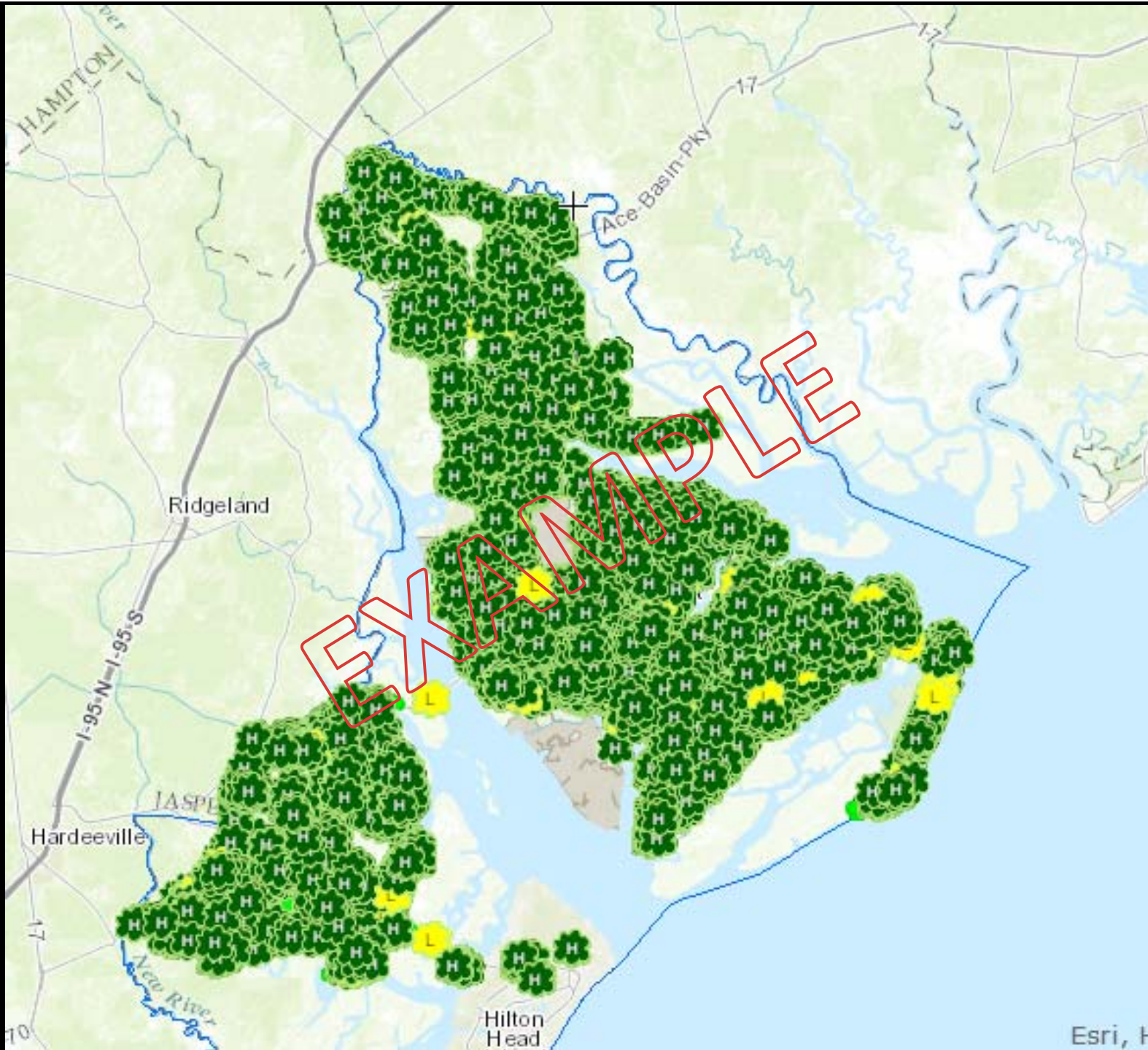


“Hangers”, “Leaners”, & Stumps



Esri, HERE, DeLorme, Intermap, USGS, NGA, EPA, USDA, N





Esri, I

Stumps

- Inventory complete
- Two categories:
 - Extracted = 160
 - In place = 100
 - Need FEMA approval to be removed
- Cost is included in current task orders



Marine Debris

- Boats, Docks, other debris obstructing the navigable waters
- The County is questioning if this is the responsibility of the County, SC-DNR, SC-DHEC/OCRM, SC-EMD, or USACE
 - Both SC-EMD and FEMA are working with the County for answers
 - Both DNR and DHEC have sent letters to SC-EMD stating the responsibility is not theirs



Marine Debris action to date

- SC-DNR and US Coast Guard did hazard removal in the navigable channels in the first days after the storm
- Efforts are ongoing by DNR to identify and inventory the vessels and debris
- County is considering activating the mutual aid agreement with ToHHI. Bidding is another option. SC-EMD and FEMA have stated we cannot change order the task to CERES.
 - Cost to remove is unknown at this time



MS4 Infrastructure Debris

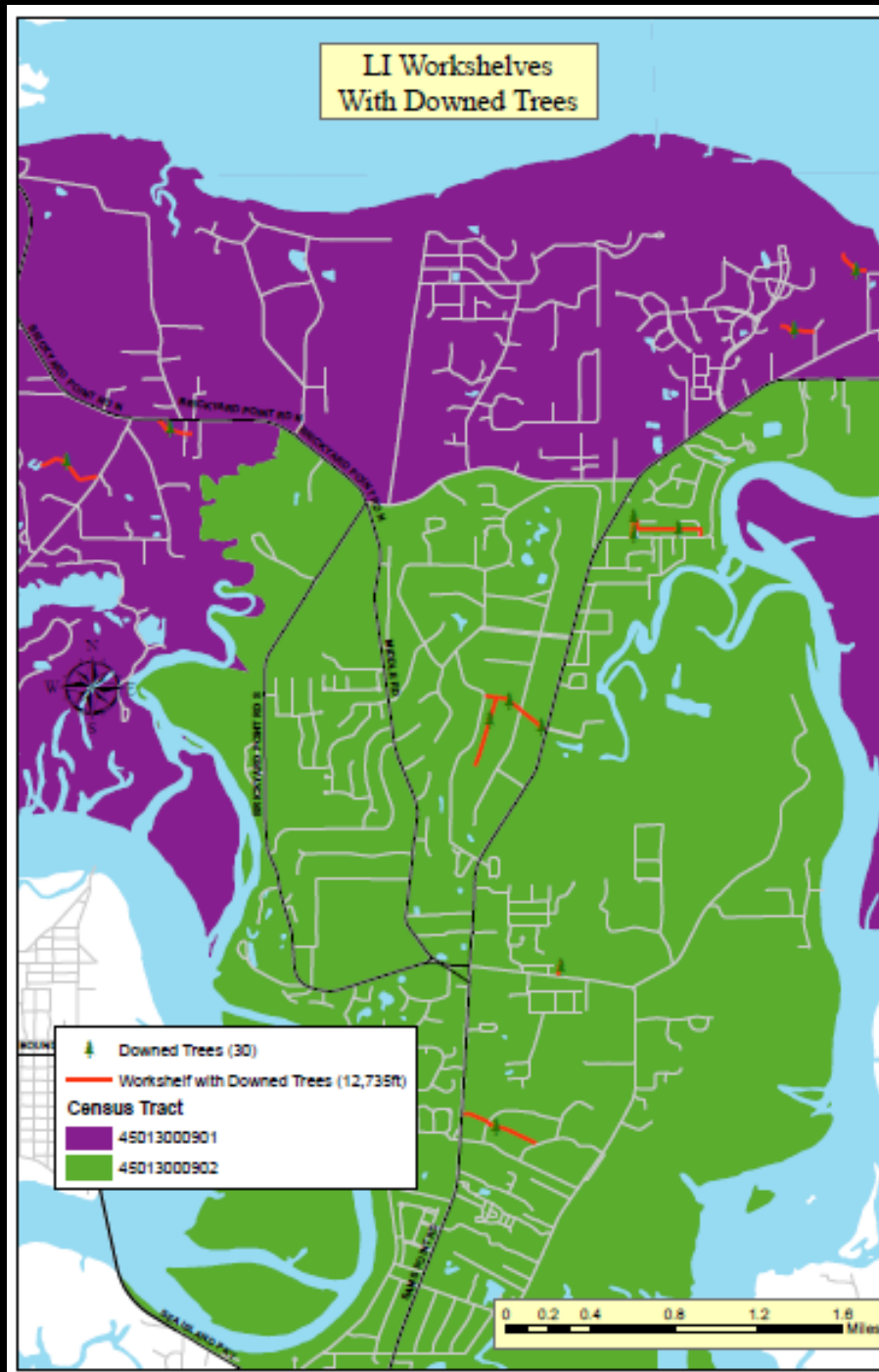
- Fallen trees, woody debris washed into and blocking ditches and pipes within County maintained easements
- Identification and Inventory is complete
 - NRCS staff on site today and tomorrow for assessment
 - Cost estimate \$487,475
- Pursuing USDA funding prior to submittal to FEMA as part of Public Assistance
 - Allows 100% reimbursement for monitoring up to 7.5% of debris cost
- Follows same time frame as other debris
 - If awarded USDA funding, we have 220 days from the date of the agreement

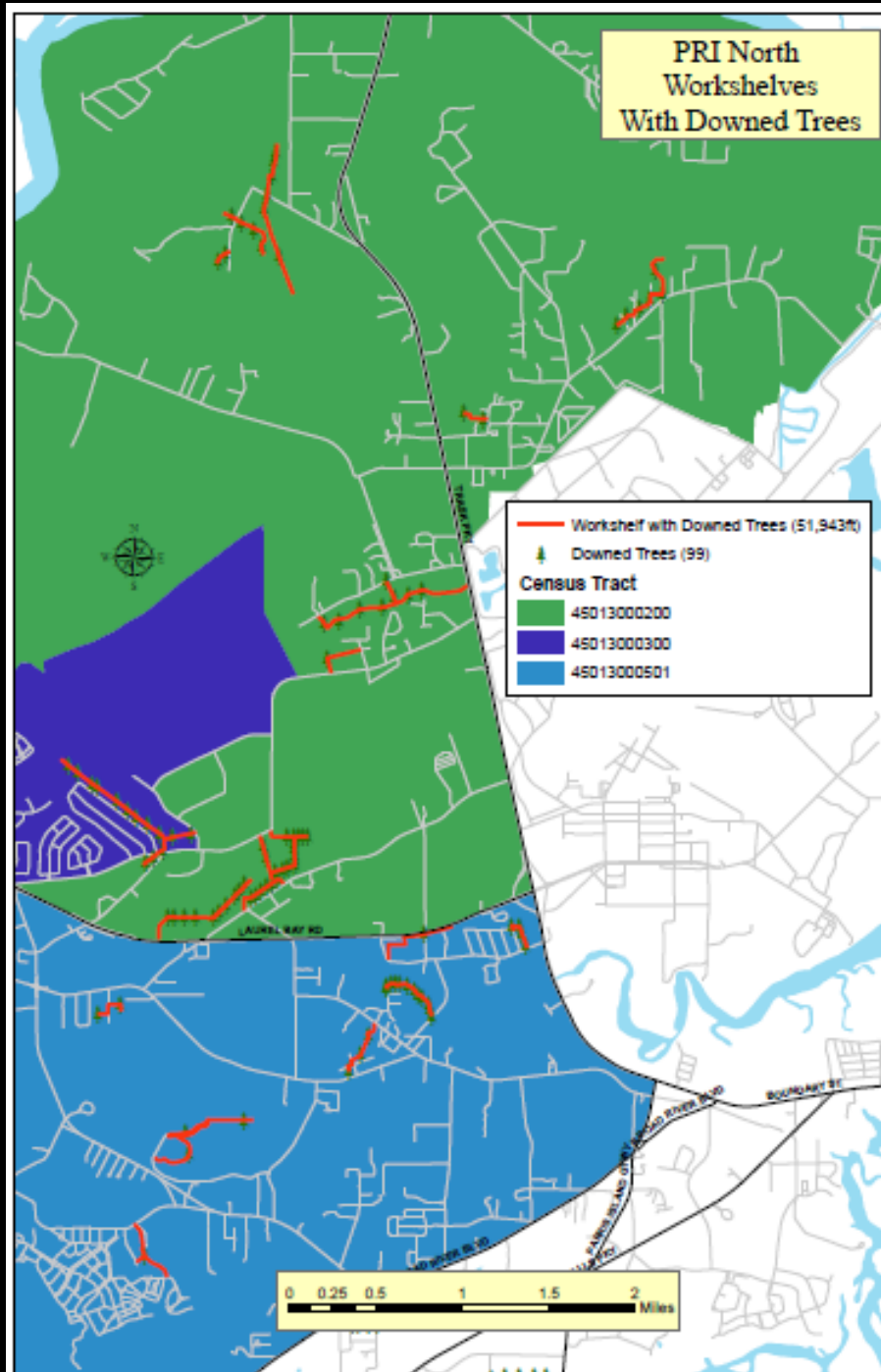
MS4 Infrastructure Debris

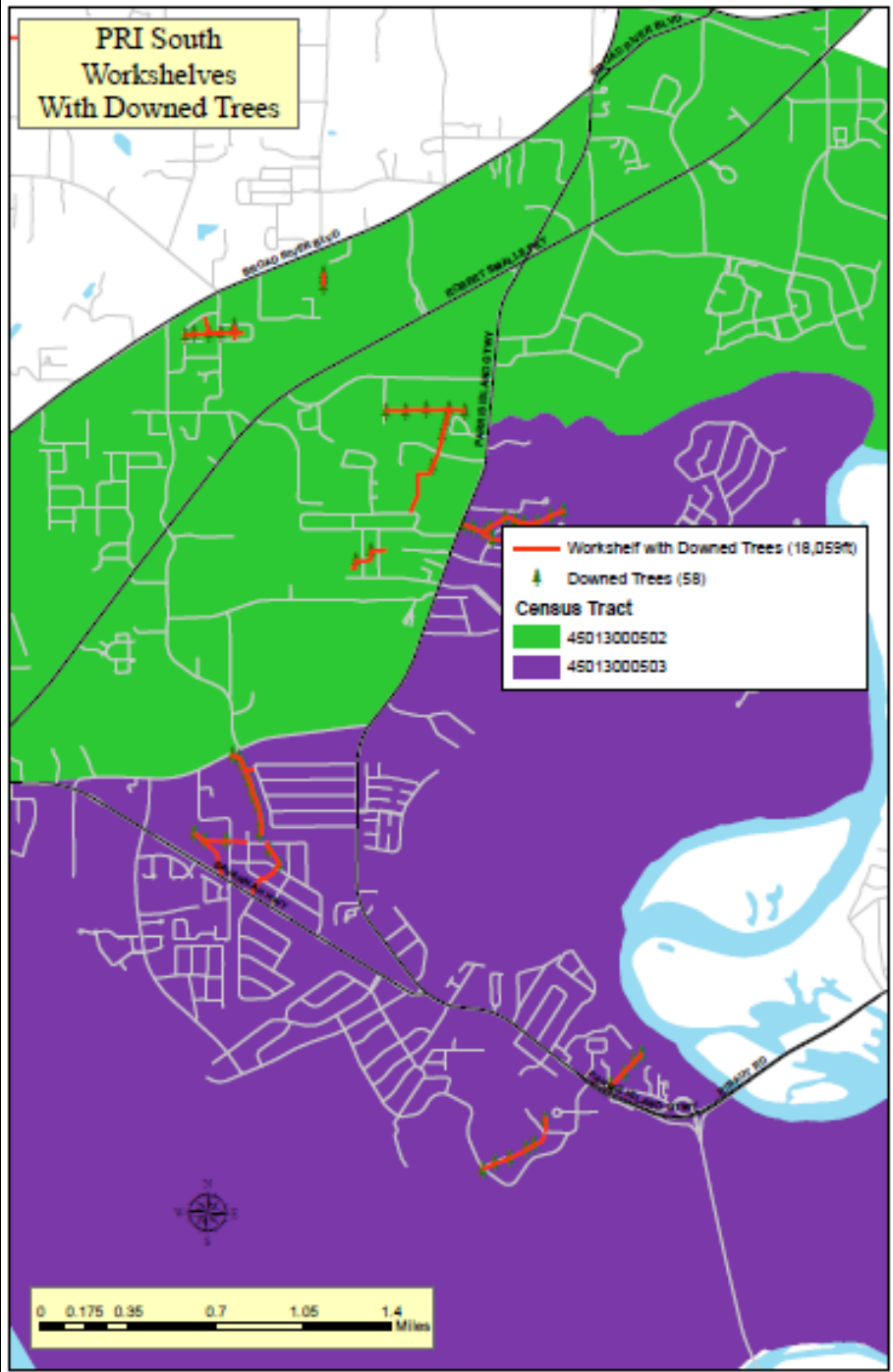
DISTRICT	Lady's Island	Port Royal Island (North)	Port Royal Island (South)	Sheldon	St. Helena	Bluffton	
Number of Downed Trees	30	100	57	40	107	15	Total = 249 Trees Down
Workshelf with Downed Trees	12,735ft	51,943ft	18,059ft	67,372ft	42,487ft	2,312ft	Total = 36.92 Miles

- In-house crews have performed limited work in clearing; likely will assist CERES in certain areas
- CERES to take over and complete. Task Order pending approval/denial by USDA

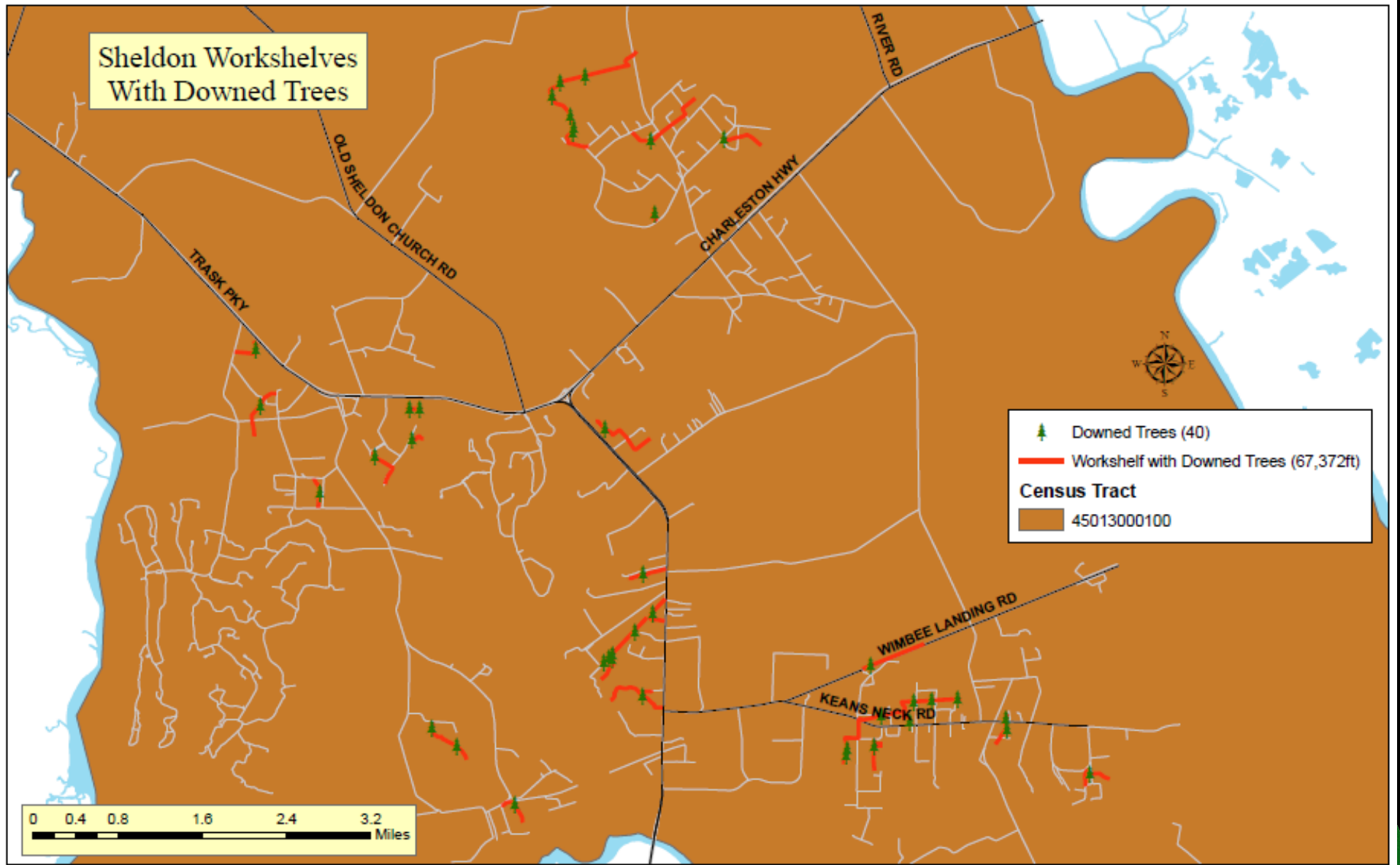




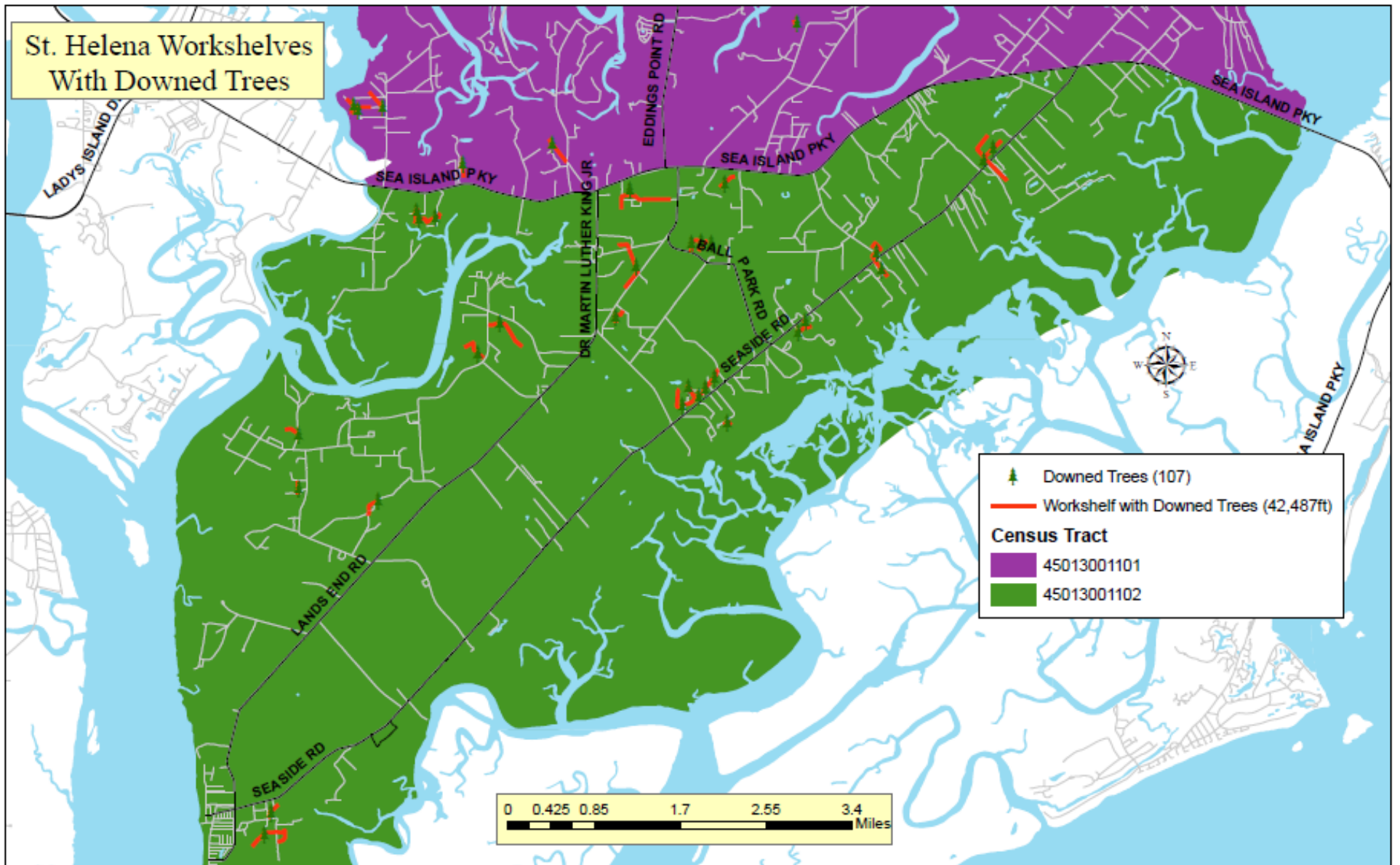




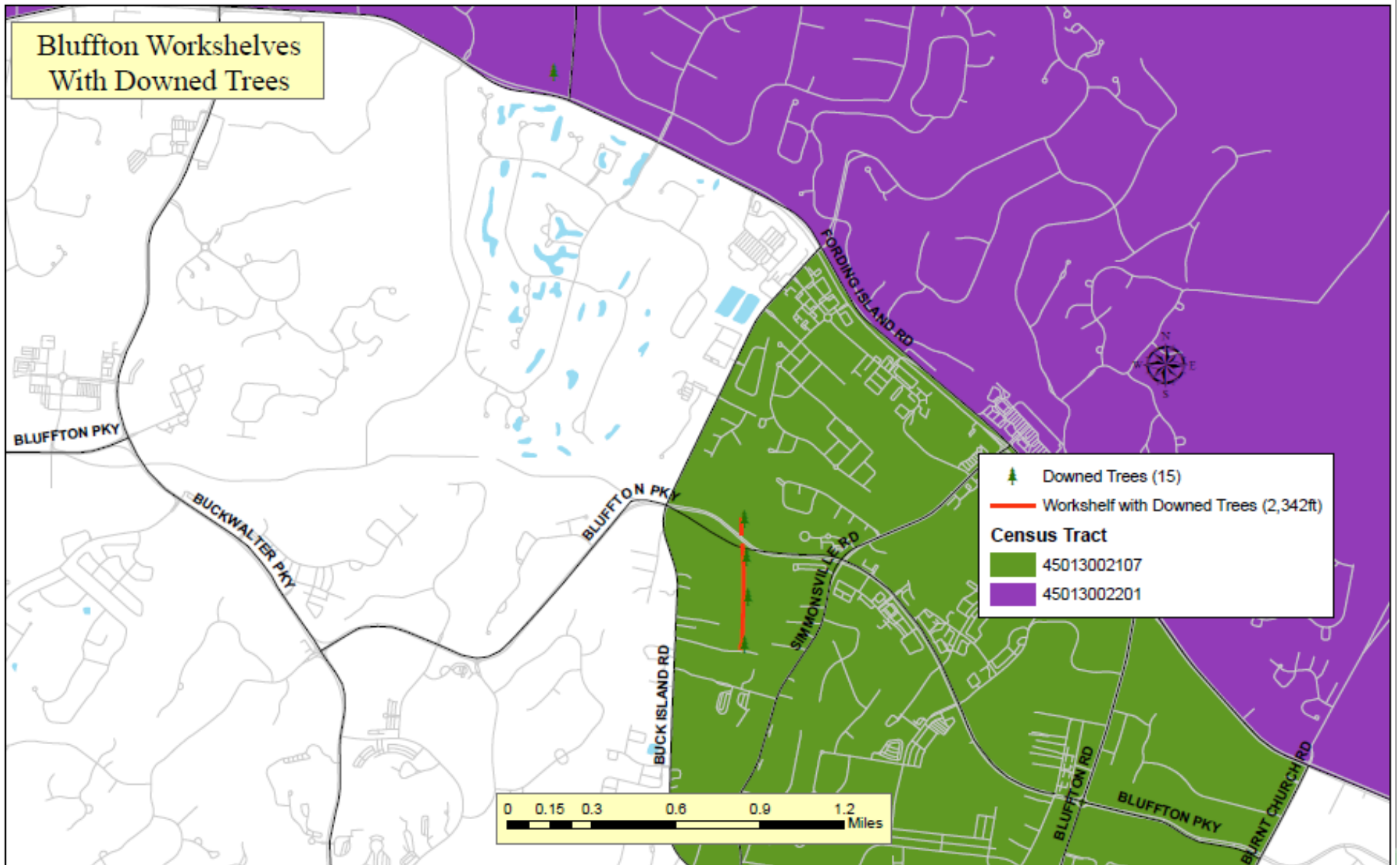
Sheldon Workshelves With Downed Trees



St. Helena Workshelves With Downed Trees



Bluffton Workshelves
With Downed Trees



FEMA reimbursement Program

- The County is participating in a newer pilot debris program by FEMA
- Increases percentage of reimbursement during the first 90 days (85% first 30 days, 80% next 60 days, then 75% up to 180 days)
- Since DHEC and FEMA approved our debris plan in advance of the event, it increases reimbursement by 2%



Damage Assessment

- As of November 10, 2016 w/ Jan. 6, 2017 update:
- Countywide assessment is complete
- 3,913 parcels with damage
 - 101 with damaged structures >50%
- Estimated cost \$34,108,749
 - Does not include ToHHI's 19,688 parcels inspected. These numbers will not be available until next year when annual permitting reports are available to value cost of all permitted repairs
- County Building Inspection has issued 356 emergency related permits (316 building, 40 electrical)



Damage Assessment - Beaufort County

(through 11/10/2016)

Location	All Parcels Damaged	Structures w/ Major Damage (>50%)	Damage (\$\$)
Unincorporated Burton/Beaufort	132	11	\$3,399,522
Bluffton/Okatie (Town & Unincorporated)	219	9	\$6,867,950
Town Of Port Royal	68	4	\$1,976,771
St. Helena	193	15	\$4,382,225
Sheldon	20	0	\$711,330
Lady's Island	124	11	\$7,174,925
Fripp Island	49	8	\$1,728,400
Daufuskie	16	5	\$1,642,500
City Of Beaufort	234	8	\$6,225,126
Hilton Head (Residential)	2792	28	**
<u>Hilton Head (Initial Commercial/Businesses)</u>	66	2	**
TOTAL	3913	101	\$34,108,749

NOTE 1: Damage Assessment is complete in all parts of the County

NOTE 2: HHI Dollar value estimates are not available as of this update.

NOTE 3: HHI has completed 1st Phase; inspected approximately 19,688 structures.



County Facilities (1/9/17)

- Facilities Management reported damage to 178 separate facilities / structures / grounds
- Much of the work was done by staff.
 - Cost summary is pending
- Staff working with Insurance Reserve Fund prior to submittal to FEMA for Public Assistance
- Debris on sites being cleared by Public Works, Grounds, and/or the County's contractor.
 - Cost included in Debris Removal costs



Beaufort County Facility Management

Facility Inventory
Updated 1/9/2017

#	Facility	Location	Description	Damage to Building	Damage to Grounds
1	18 John Galt Road	18 John Galt Road	offices-Clemson Extension		Debris
2	A. Home Building	104 Ribaut Road, Beaufort	Single story building		Debris
3	A. Home Nature Park	2540 Azalea Drive, Beaufort	Passive Park		Debris needs to be removed and trees down
4	Administration Building	100 Ribaut Road, Beaufort	Multi-story bldg.	Wet carpet & ceiling tiles in Register of Deeds, Assessor's Office, Employee Services and Building Codes.	Stumps needs to be removed
5	Agnes Major Community Center	21 Agnes Major Road,	Single story bldg., ball fields		Debris
6	Aljoy Boat Landing	265 Aljoy Road	Boat Landing/float system		Debris
7	Altamaha	Balleys Road	Passive Park		Trees down at the back of the Park
8	Animal Shelter	25 Shelter Church Road, Beaufort	Single story building	Leak near HVAC vent	Debris
9	Animal Shelter Cat Building	25 Shelter Church Road, Beaufort	Single story building		Debris
10	Animal Shelter Clinic	25 Shelter Church Road, Beaufort	Single story building		Debris
11	Animal Shelter Dog Building	25 Shelter Church Road, Beaufort	Single story building		Debris
12	Baler/Tire Storage Building	108 Shankin Road			Debris
13	Barker Field	70 Baygall Road, HHI	Ball Fields, concession stands, restrooms	Restroom ceiling/water damage Fence Damage	4 stumps needs to be removed
14	Barrel Landing	Near McGarvey's Corner	Rural and Critical Lands		Debris
15	Basil Green Complex	1500 Rodgers Street	Ball Fields, restrooms, concession stand	Shingles/tar paper missing from dugouts	Debris
16	Battery Creek High School Pool	One Blue Dolphin Drive, Beaufort	pool		Debris
17	Beaufort County Gov't Center South	539 William Hilton Parkway			Debris
18	Beaufort High School Pool	84 Sea Island Parkway, Beaufort	pool		Debris
19	Beaufort Library	311 Scott Street, Beaufort	Multi-story bldg.		Debris
20	BeaufortTennis Courts	1105 Bladen Street	Tennis Courts, restrooms	tennis nets are down	Debris
21	BIV #5-Traffic Eng./Rec. Mgmt.	113 Industrial Village Road, Beaufort	2 story bldg./slab on grade		Debris
22	BIV #-Engineering	104 Beaufort Industrial Road	single story bldg., slab on grade		Debris
23	BIV #II-Finance, Purchasing, Risk Mgmt.	106 Beaufort Industrial Road	single story bldg., slab on grade		Debris
24	BIV #I-Staff atty., Clemson Extension	102 Burton Hill Road, Beaufort	single story bldg., slab on grade		Debris
25	BIV #IV-Voters Registration	15 John Galt Road, Beaufort	Single story building		Debris
26	Bluffton EMS	2 Bridge Street, Bluffton			
27	Bluffton Fuel Site	25 Benton Field Road, Bluffton	Attendant's Office, canopy		Debris

Beaufort County Facility Management

Facility Inventory
Updated 1/9/2017

#	Facility	Location	Description	Damage to Building	Damage to Grounds
28	Bluffton Gym	61 Ulmer Road, Bluffton		Tree on edge of roof, tree removed	2 stumps needs to be removed
29	Bluffton Library	120 Palmetto Way, Bluffton		2 metal sun shutters torn off by wind; Sun shade on left side fallen, ceiling tiles wet, tree on fence	Debris
30	Bluffton Media	61 Ulmer Road, Bluffton		Fence Damage	Debris
31	Bluffton Pool	55 Prichard Farm Road, Bluffton			Debris
32	Bluffton Public Works	9 Benton Field Road, Bluffton		Tree on fence - removed, fence damaged	Debris
33	Bluffton Pump House	Ulmer Road			Debris
34	Bluffton Storage Building	Ulmer Road			Debris
35	Bob Jones Field	2712 Jones Avenue	Ball Fields, concession stands, restrooms		Debris
36	Booker T. Washington Center	132 Booker T. Washington Circle	Single story bldg, basketball court, playground		Debris
37	Brickyard Creek Landing	275 Brickyard Pt. Road	Boat Landing		Debris
38	Bristol Skate Park	4 Helmway, HHI	Skate Park		Bristol Skate Park trees down, stumps
39	Broad River Boat Landing	1050 Robert Smalls Parkway	Boat Landing		Debris
40	Broad River Pier	1000 Robert Smalls Parkway			Debris
41	Broad River Restrooms	1050 Robert Smalls Parkway	Restrooms at pier		Debris
42	BROC-Beaufort Recovery Operation Center	Hampton, SC			
43	Broomfield Community Center	200 Brickyard Point Road, Beaufort	Single story bldg, ball fields, dugout	Front door broken/window pane broken	Debris
44	Bruce Ederly Field	719 16th Street, Port Royal	Ball Fields, restrooms		Stump and utility pole needs removing
45	Buckingham Boat Landing	55 Fording Island Road Ext.	Boat Landing		Trees down
46	Buckwaller Park	905 Buckwaller Parkway	Restroom, concessions		Buckwaller Soccer Field debris
47	Buckwaller Parkway	Buckwaller Parkway	15 miles of parkway		Trees down in the median
48	Buckwaller Rec Center	905 Buckwaller Parkway			Debris
49	Buddy Lubkin/Zoo Von Harten Landing	40 Station Creek Road	Boat Landing/boat system/House		Debris needs to be removed
50	Burton Wells Complex	1 Middleton Recreation Drive	Ball Fields, concession, restrooms, building		Debris needs to be removed
51	Burton Wells Lake	60 Burton Wells Road	kayak pond,	Palm tree leaning against restroom roof Fence damage	Five trees needs to be removed and stumps
52	Burton Wells Park	65 Burton Wells Road	Ball Fields, concession stands, restrooms		Debris
53	Burton Wells Park Restroom, press box, concessions	1 Middleton Recreation Drive			Debris
54	Butchers Island Landing	10 Butch's Road	Boat Landing		Butcher's Island debris

Beaufort County Facility Management
 Facility Inventory
 Updated 1/9/2017

#	Facility	Location	Description	Damage to Building	Damage to Grounds
55	C.C. Haigh, Jr. Boat Landing	1640 Fording Island Road Ext.	Boat Landing/pier/float system		Debris
56	Camp St. Mary's	119 Camp St. Mary's Road	4 structures		Pine trees down, stumps and debris
57	Chaplin Park	11 Castnet, Hilton Head Island, SC	4 buildings and ball field		Debris
58	Coffin Point Drop-Off Center	10 Cee Cee Road	Single story building		Debris
59	Coosaw Community Center	140 Coosaw River Drive	Single story bldg., playground		Debris
60	Coroners Office	1804 Old Shell Road, Port Royal	single story	Tree limb damaged a down spout on building	Debris
61	Courthouse	102 Ribaut Road, Beaufort	Multi-story bldg.		Debris
62	Coursen-Tate Park	10 Springfield Rd, Beaufort, SC 29907		Fence damage	Tree and Stump needs to be removed
63	Cross Island Boat Landing	68 Helmman Way	Boat Landing/pier/ float system		Debris needs to be removed
64	Crossings Park	4 Haig Point Court, HHI	Ball Fields, concession restrooms	Fence Damage	Pine trees, debris and stumps needs to be removed
65	Crystal Lake	124 Lady's Island Drive, LI 29907	Passive Park, building		Debris
66	Cuffy Drop Off Center	152 Cuffy Road	Single story building		Debris
67	Dale Community Center	15 Community Center Road	Single story bldg., ball fields, restrooms, ball court		Debris
68	Daufuskie Island Boat Landing	13 Haig Point	Boat Landing/float system		
69	Daufuskie Island Restrooms	New River			
70	Daufuskie Island Store	New River			
71	Del Webb Fire Station	25 William Pope Drive, Hilton Head			Debris
72	Detention Center	106 Ribaut Road, Beaufort	Multi-story bldg.		Debris
73	DNA Lab Sheriff's Office	111 Industrial Village Road	Offices		Debris
74	DSN Broad River Residence	429 Broad River Drive, Beaufort	single story residence		
75	DSN Chloe	3 Chloe's Way	single story residence		
76	DSN Clearwater Admin Building	100 Clear Water Way			
77	DSN Clearwater Main Building	100 Clear Water Way	DSN Office		
78	DSN Cottage Walk	18 Cottage Walk	DSN Residential house		
79	DSN Fraser Drive	304 Fraser Drive		Tree is leaning on fence, damaged	
80	DSN Lakes Crossings	75 Lakes Crossing Blvd., Bluffton			
81	DSN Little Capers	260 Little Caper's Road	single story residence		

Beaufort County Facility Management
 Facility Inventory
 Updated 1/9/2017

#	Facility	Location	Description	Damage to Building	Damage to Grounds
82	DSN Office	1804 Old Shell Road, Port Royal	Single Story Building		
83	DSN Palmetto Ridge (property only)	3012 Palmetto Ridge Street, Beaufort	Property only		
84	DSN Peyton	9 Peyton's Way	single story residence	Tree on roof, removed, roof damage	Stumps need to be removed
85	DSN Pinecrest	210 Pinecrest Circle, Bluffton, SC			
86	DSN pottery Building	100 Clear Water Way			
87	Eddings Point Boat Landing	188 Eddings Pt. Road	Boat Landing		Debris
88	Edgar Glenn Boat Landing	305 Okate Highway	Boat Landing/float system		Debris
89	Facilities Maintenance Office	142 Shankin Road, Beaufort	Single Story		Fac maintenance office tree leaning
90	Federal Courthouse	1501 Bay Street, Beaufort	Multi-story bldg. Leased to St. Elena		Debris
91	Fort Fremont	St. Helena Island			Debris needs to be removed, stumps
92	Fuel Manager's Office	Shankin Road			Debris
93	Fuel Site	Shankin Road	4 pumps/canopy		Debris
94	Gates Drop Office Center	130 Castle Rock Road, Beaufort	Single story building		Debris
95	Grays Hill Landing	395 Carlendon Road	Boat Landing/float system		Debris
96	Grounds Maintenance Office	136 Shankin Road, Beaufort	Single Story	Building flooded, water damage, tile damage	Debris
97	H.E. Trask, Sr. Boat Landing	325 Sawmill Creek Road	Boat Landing/float system		Debris
98	Health Center	600 Wilmington Street, Beaufort			Debris
99	Health Center/DHEC	1407 King Street, Beaufort			Debris
100	HH Island Library	11 Beach City Road, Hilton Head			Stumps needs to be removed
101	HH Airport Hangars	120 Beach City Road, HHI			Debris
102	HH Airport Terminal	120 Beach City Road, HHI		Roof soffit section missing	Debris
103	HH Airport Tower	120 Beach City Road, HHI			Debris
104	HH Island Airport CFR	120 Beach City Road, HHI			Debris
105	HH Island Government Center	530 William Hilton Parkway			Debris from entrance needs to be removed
106	Hilton Head Park	150 William Hilton Parkway, HHI	2 tennis courts, basketball court	Fence damage	Debris from basketball court area needs to be removed
107	Human Services Building	1905 Duke Street, Beaufort	Multi-story bldg.		Debris
108	Lady's Island Airport Hangars	41 Airport Circle		One foot damage from water intrusion/light vault water damage	Debris

Beaufort County Facility Management

Facility Inventory
Updated 1/9/2017

#	Facility	Location	Description	Damage to Building	Damage to Grounds
109	Lady's Island Airport Terminal	41 Airport Circle		ceiling/water drmage, extensive damage to building, runway lighting damage	Debris needs to be removed
110	Law Enforcement Center/EOC	2001 Duke Street, Beaufort	Multi-story bldg	Light pole damaged, back door closer damaged, fence damage	Debris needs to be removed
111	Lemon Island-Widgeon Point	Southern Beaufort County	Rural and Critical Lands		Debris
112	Leroy Brown Center	41 Ball Park Road		Fence Damage	
113	Lind Brown Community Center	1001 Hamar Street, Beaufort	Gym, pool	Gym has water on floor under a/c vent	Debris
114	Lobeco Library	1862 Trask Parkway, Lobeco			Debris needs to be removed
115	Lobeco Drop Off Center	6 Keans Neck Road	Single story building		Debris
116	M.C. Riley Park	185 Goethe Rd., Bluffton	Concession Stand, restroom, ball fields	Missing shingles	Debris and stumps
117	Magistrate/Sheriff Lobeco	1860 Trask Parkway			Debris
118	Marine Rescue Squadron/Conservation	817 Paris Ave., Port Royal, SC		Missing shingles, ceiling leaks, soffit damage	Debris
119	Marshland Landing	97 Marshland Road	Boat Landing/float system		Debris
120	McGarvey's Corner	2035 Okatie Highway	Property only		Trees down
121	Mets Field	1812 National Street	Ball Fields		Debris
122	Mosquito Control	84 Shanklin Road, Beaufort	Single Story	Roof leaks	Debris
123	Mosquito Control-Hanger	39 Airport Circle		Cantilever gate has salt water damage	Debris
124	Mosquito Control Maint Shop	84 Shanklin Road, Beaufort		Roof leaks	Debris
125	Mosquito Control Maint Shop	25 Airport Circle		water damage, extensive damage, Helo office one foot of water in building	Debris
126	Mosquito Control-Chemical Storage	84 Shanklin Road			Debris
127	Motorola Maintenance Shop	144 Shanklin Road, Beaufort	Single Story		Debris
128	Myrtle Park	4819 Bluffton Parkway, Bluffton	Multi-story bldg	Ceiling tile damage and exterior damage. Metal roof damage, ceiling tile water intrusion and wet carpet	two stumps needs removing
129	Old House Creek Pier	50 Sterling Point Drive	Pier		Old House Creek trees down and debris
130	Oscar Frazier Park	77 Shultz Road, Bluffton, SC	Ball Fields, concession stand, restrooms		Trees, stumps and debris
131	Paige Point Boat Landing	99 Paige Point Landing Road	Boat Landing		Debris
132	PALS Office	1514 Richmond Avenue, Port Royal	Single story bldg/lab on grade	Tree on fence, fence is crushed.	Debris
133	Paris Island Boat Landing	50 Marina Blvd	Boat Landing/float system		Debris needs to be removed
134	Pistol Range	130 Shanklin Road, Beaufort			Debris

Beaufort County Facility Management
 Facility Inventory
 Updated 1/9/2017

#	Facility	Location	Description	Damage to Building	Damage to Grounds
135	Port Royal	50 Sands Beach Road	Boat Landing/float system		Debris
136	Pritchardville Drop Off Center	54 Giblet Road	Single story building		Debris
137	Public Works Building and Garage	120 Shankin Road, Beaufort	Single Story	Building flooded, ceiling tile damage, floor tile damage, 7 offices	Debris
138	Public Works Open Storage Building	120 Shankin Road, Beaufort		Skylight on roof of building is missing, roof damage	Debris
139	Records Management	2727 Depot Road			Debris
140	Russ Point Boat Landing	15 Russ Pt. Landing Road	Boat Landing/float system		Debris
141	Sams Point Boat Landing	1009 Sams Pt. Landing Boat	Boat Landing/float system		Debris
142	Scott Community Center	242 Scott Hill Road, St. Helena	Single story bldg, court, playground, ballfields	Fence down. Tree on power box	Debris needs removing
143	Seaside Community Center	122 Seaside Road, St. Helena	Single story bldg, basketball court, playground		one tree and stump needs removing
144	Senior Citizen's Center	1408 Parris Avenue, Port Royal		Debris on roof	Debris
145	Senior Citizen's Center-Burton Wells	2 Middleton Recreation Drive	Single story building		Debris
146	Shankin Drop Off Center	80 Shankin Road Beaufort			Debris
147	Shankin Drop Off Center (old)	132 Shankin Road, Beaufort	Single story building (Closed)		Debris
148	Sheldon Drop Off Center	208 Paige Point Road	Single story building		Debris
149	Shell Point 800 Mgr. Building/tower	59 Cleveland Drive, Beaufort	Re-hab 2011		
150	Shell Point Elementary Field	Savannah Hwy (802), Burton	Ball Fields, School lease		Debris
151	Shell Point Park	581 Broad Rive Drive	2 tennis courts, ball fields, restrooms		Debris
152	Shell Point Property	688 Parris Island Gateway	Parcel of property		Debris
153	Shell Point Repeater/tower Building	19 Cedar Wood Street, Beaufort			
154	Sheriff's Annex	2727 Depot Road			Debris
155	Sheriff's Camp	113 Chowan Creek Bluff, Beaufort	One single story building		Debris outside of fence needs removing, stumps
156	Sheriff's Gym	2727 Depot Road			Debris
157	Sheriff's Impound lot	134 Shankin Road			Debris
158	Sheriff's Office Annex	1925 Duke Street, Beaufort	Single story building/leased building	Trees down, building damaged, fence damage	Debris
159	Sheriff's Office Helo Hanger	237 Sea Island Parkway, LI		Missing metal wall panels damaged	
160	Sheriff's Office Spec Ope	1021 Okatie Highway	offices		Debris
161	Sheriff's Storage	2727 Depot Road			Debris

Beaufort County Facility Management

Facility Inventory
Updated 1/8/2017

#	Facility	Location	Description	Damage to Building	Damage to Grounds
162	Simmonsville Drop Off Center	104 Simmonsville Road			Debris
163	Southside Tennis Courts	1407 Battery Creek Road	Tennis Courts, restrooms	Back board on tennis court leaning, fence damage, light poles are leaning	Debris needs removing from and streets
164	Spanish Moss Trail	Between Rosasida/Hwy 290	1.5 miles	Numerous washouts	Debris
165	St. Helena Drop Off Center	639 Sea Island Pkwy. Beaufort	Single story building		Debris at entrance needs removing
166	St. Helena Library	6355 Jonathan Francis St. Road, St. Helena		Door to dumpster inclosure is damaged	Debris needs removing
167	Station Creek House	36 Station Creek Drive		Roof damage, shingles missing	Station Creek debris
168	Steel Bridge Landing	993 Charleston Hwy	Boat Landing/float system		Debris
169	Storm Water Building	120 Shankin Road, Beaufort	Single Story Building		Debris
170	Storm Water Building #2	108 Shankin Road	Offices (old Coroner's Office)		Debris
171	Sugar Hill Landing	40 Sugar Hill Landing Road	Boat Landing		Debris needs removing
172	United Way Building				Debris
173	Wallace Landing	245 Sam Doyle Drive	Boat Landing		Debris
174	Warehouse	2727 Depot Road	Old Record's Management Building/Storage		Debris
175	Waterside Storage	1678 Sea Island Pkwy., St. Helena	Property only		Debris
176	Wesley Felix Park - St. Helena Park	185 Ball Park Road, St. Helena Is.	Ball fields, restrooms, concession stand	Fence damage	Field 1 debris needs removing
177	White Hall Landing	33 Sea Island Parkway	Boat Landing/float system		Debris
178	Wimbee Landing	550 Wimbee Landing Road	Boat Landing/pier		Debris need removing



Public Assistance (PA) Projects

- The following list of projects has been submitted to FEMA for consideration under PA during our “kick off” meeting 11/10/16:
- Debris Removal - \$26.4 million
 - Paid out \$3,985,537
- Emergency Response - \$6 million
- Facility damage
 - Boat ramp damage
 - Recreational Facilities
- Road damage



Significant PA projects

- Lady's Island Airport Terminal, Hangers, and Airfield - \$ 200,000 (does not include structural cleaning to hangers, Mosq. Control, Sheriff's Helo hanger damages)
- Central Drive causeway - \$1.33 million
- C.C. Haigh Boat Landing - \$135,000
- Flyover approach embankment erosion - \$388,000
- Spanish Moss Trail causeway erosion - \$89,000



Significant PA projects

- Central Drive Repairs awarded on Nov. 22, 2016 to Andrews Engineering, J.H. Heirs, and O'Quinn Marine team. Completion by May 21, 2017
- Slope Failure RFP due Jan. 12, 2017
- Boat Ramp Repair RFP due Feb. 7, 2017

Total to date: \$35.6 million

25% = \$8.9 million

Paid to date = \$6.8 million

Encumbered: \$28.9 million



Individual Assistance (IA)

- FEMA's status:
 - Disaster Recovery Centers (DRC) now closed
 - Disaster Survivor Assistance (DSA) teams have ended operations
 - Deadline to register for IA has passed
- Citizens with registered cases can get updates on their cases by calling 1-800-621-3362 or go to www.disasterassistance.gov



“Long Term Recovery Team”

- Beaufort County Human Services Alliance has teamed with United Way and numerous other NGOs to establish a long term recovery team within the framework of “Volunteers in Action during a Disaster” (VoAD)
- Citizens can call 843-524-HELP or 211 to seek assistance
- Long term case management is a growing need. HSA is working to define a process to work with outside agencies to hand off cases when needed. SCEMD has hired an outside case management firm to assist if needed

Volunteer groups and agencies with significant contributions

- United Way of the Lowcountry
- Beaufort County CERT
- Samaritan's Purse / Lowcountry Community Church
- Hilton Head Island Rotary Club
- Holy Family Catholic Church
- Praise Assembly
- Others



HSA Stats (as of 12/31/16)

- Volunteers (Number of People): 912
- Time Dedicated to Hurricane Recovery Efforts (Hours Worked): 12,150
- Case Load: 1,320
- Beaufort County Disaster Relief Fund:
 - Funds to date: \$36,768.25.
 - Local donations have been challenging because many of our usual donors are struggling themselves after the storm.



Summary of HSA needs

United Way of the Lowcountry
 Disaster Recovery – Community Needs
 12/30/2016



<u>Referrals</u>	1225	<u>Number of unique callers</u>	1011
------------------	------	---------------------------------	------

Short-term housing	Tree removal from house	Utility	Emergency MRE's	Prescriptions	
81	60	159	11	9	1 – appliances 1 – Painting 1 – load of fill dirt 9 – Thanksgiving 91 - Christmas 1 – Chemo 1 – House Fire 2 – Car payments 4 – Other County 12 – DRC's 2 – Moving a trailer 1 – set up costs for mobile home
Long term housing	Tree leaning	Rental	Hot meals	Transportation	
45	61	114	32	13	
Storage Needs	Debris removal from yard	Clothing	Food Pantries	Gas	
12	96	42	196	10	
Movers	Home repair needs	Diapers/baby needs		Employment	
4	123	8		17	
	Water testing				
	4				128



Human Services Alliance continued work

- HSA, PALS, and United Way worked together to coordinate a donation drive for food, clothes, money, Christmas gifts. We received:
 - 10 bags of clothes
 - 2 bags of new toys
- Donations given to Bluffton Self Help and HELP of Beaufort
- Volunteer groups and those offering services for free or discounted fees should call United Way of the Lowcountry to register their resources to fulfill needs



County Operations

- The following departments and agencies with recovery functions have reported “normal operations”
- Animal Services
- Mortuary Services
- Schools
- EMS
- PALS (although they continue to assist HSA)
- Utilities
- Planning and Zoning



County Operations

- The following departments and agencies with recovery functions are still managing Hurricane Recovery:
- Public Works
- Stormwater
- Facilities Management
- Engineering
- Building Inspection
- Assessor's Office
- Legal / Finance / Admin.



Public Information

- Website has the most current staff reports and data

www.beaufortcountydisasterrecovery.net

- Staff continue to update WebEOC, an internal program, on status, activity, needs, and damages. This will serve as documentation to FEMA for the storm event

