

AGENDA  
COUNTY COUNCIL OF BEAUFORT COUNTY  
Monday, February 22, 2010  
4:00 p.m.  
Council Chambers  
Administration Building

**Citizens may participate in the public comment periods and public hearings from a telecast site at the Hilton Head Island Branch Library.**

**4:00 p.m.**

1. CALL TO ORDER
2. PLEDGE OF ALLEGIANCE
3. INVOCATION
4. PUBLIC COMMENT
5. COUNTY ADMINISTRATOR'S REPORT  
Mr. Gary Kubic, County Administrator
  - Two-Week Progress Report
  - Presentation / Advancements in Aerial Photography  
Mr. Dan Morgan, GIS Director
  - Presentation / Efforts to Win a Complete Count for US Census 2010  
Mr. Paul Shepherd, U.S. Census Partner Specialist
  - Presentation / Oyster Factory Park Grant Opportunity  
Ms. Laura Budak, Project Manager, Town of Bluffton
6. DEPUTY COUNTY ADMINISTRATOR'S REPORT  
Mr. Bryan Hill, Deputy County Administrator
  - Two-week Progress Report
  - Construction Project Updates:  
One Cent Sales Tax Referendum Projects: (Monthly Progress Report)  
New Bridge over Beaufort River / US 21 / SC 802 Construction Project  
SC Highway 802 Roadway Construction Project  
Mr. Robert McFee, Division Director, Engineering and Infrastructure

Over



- Capital Improvement Projects:  
Disabilities and Special Needs Adult Day Care Center  
Mr. David Hughes, CIP Implementation Manager

CONSENT AGENDA  
Items 7 through 9

7. VOICE OVER INTERNET PROTOCOL (VoIP) TELEPHONE SERVICES FOR MIS DEPARTMENT ([Backup](#))
  - Finance Committee discussion and recommendation to approve February 15, 2010 / Vote 7:0
  - Contract award: Internetwork Engineering Services, Charlotte, North Carolina
  - Contract amount: \$93,130 includes per diem/travel and they are the only firm who met the experience requirements
  - Funding source: Services paid from special capital equipment account which has a balance of \$120,000.
8. RESOLUTION AGREEING TO APPLY TO SOUTH CAROLINA DEPARTMENT OF TRANSPORTATION FOR A GRANT IN AN AMOUNT NOT TO EXCEED \$100,000 TO ASSIST WITH FERRY SERVICE TO AND FROM DAUFUSKIE ISLAND ([Backup](#))
  - Community Services Committee discussion and recommendation to approve February 15, 2010 / Vote 7:0
9. TEXT AMENDMENT TO THE ZONING AND DEVELOPMENT STANDARDS ORDINANCE (ZDSO), ARTICLE XIII, SEC. 106-2729. STREET DESIGN STANDARDS (TO ESTABLISH CONSTRUCTION STANDARDS FOR UNPAVED ROADS AND TO PERMIT ACCEPTANCE OF UNPAVED ROADS BY THE COUNTY FOR MAINTENANCE OR OWNERSHIP FOR AFFORDABLE HOUSING DEVELOPMENTS WHEN APPROVED BY COUNTY COUNCIL) ([Backup](#))
  - Consideration of second reading approval February 22, 2010
  - First reading approval February 8, 2010 / Vote 9:0
  - Announcement of Public Hearing – Monday, March 15, 2010, beginning at 6:00 p.m. in Council Chambers of the Administration Building
  - First reading approval February 8, 2010
  - Natural Resources Committee discussion and recommendation to approve February 1, 2010 / Vote 7:0

PUBLIC HEARING  
Item 10

- 6:00 p.m.** 10. COMMUNITY DEVELOPMENT BLOCK GRANT NEEDS ASSESSMENT ([Backup](#))

- 11. [COMMITTEE REPORTS](#)
- 12. PUBLIC COMMENT
- 13. ADJOURNMENT

County TV Rebroadcast	
Wednesday	11:00 p.m.
Friday	9:00 a.m.
Saturday	12:00 p.m.
Sunday	6:30 a.m.

Cable Casting of County Council Meetings <i>The County Channel</i>	
Charter Cable	CH 20
Comcast	CH 2
Hargray Cable	CH 252
Hargray Video on Demand	600
Time Warner Hilton Head Cable	CH 66
Time Warner Sun City Cable	CH 63

**OFFICE OF THE COUNTY ADMINISTRATOR  
COUNTY COUNCIL OF BEAUFORT COUNTY**

**GARY KUBIC**  
COUNTY ADMINISTRATOR

**CHERYL HARRIS**  
EXECUTIVE ASSISTANT

ADMINISTRATION BUILDING  
100 RIBAUT ROAD  
POST OFFICE DRAWER 1228  
BEAUFORT, SOUTH CAROLINA 29901-1228  
TELEPHONE: (843) 470-2501  
FAX: (843) 470-2503  
[www.bcgov.net](http://www.bcgov.net)

**BRYAN J. HILL**  
DEPUTY COUNTY ADMINISTRATOR

**LADSON F. HOWELL**  
STAFF ATTORNEY

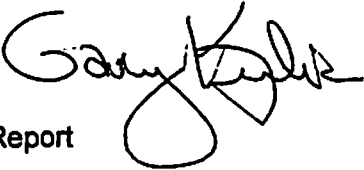
**COUNTY ADMINISTRATOR'S REPORT  
Monday, February 22, 2010  
County Council Chambers, Administration Building**

**INFORMATION ITEMS:**

- Two - week Progress Report (Enclosure)
- Presentation / Advancements in Aerial Photography  
Mr. Dan Morgan, GIS Director
- Presentation / Efforts to Win a Complete Count for US Census 2010  
Mr. Paul Shepherd, U.S. Census Partner Specialist
- Presentation / Oyster Factory Park Grant Opportunity  
Ms. Laura Budak, Project Manager, Town of Bluffton



Memorandum

DATE: February 19, 2010  
TO: County Council  
FROM: Gary Kubic, County Administrator   
SUBJ: County Administrator's Progress Report

The following is a summary of activities that took place February 8, 2010 thru February 19, 2010:

February 8, 2010

- "River Smart" presentation to the Colleton River Plantation Lifelong Learning Group
- County Council meeting

February 9, 2010

- Meeting with Ed Modzelewski, Chairman of Applied Technology Management, Inc., and Alan Ward, President of Ward Edwards, re: next phase of stormwater ordinance and cooperative initiatives

February 10, 2010

- Conference call with County Council Chairman Weston Newton, Hilton Head Town Manager, Steve Riley, and Mayor Tom Peoples re: Hilton Head Airport Master Plan
- Meeting with Scott Marshall, Director of Voters Registration / Elections re: Absentee Precinct South of the Broad

February 11, 2010

- Meeting with Weston Newton, Council Chairman, staff and architect Myles Glick re: courthouse renovations / administration / detention center renovations

February 12, 2010

- Meeting with Steve Riley, Hilton Head Town Manager, and County staff to discuss operation and maintenance of Town-owned recreational facilities

**February 15, 2010**

- Broad River Boat Landing site visit
- Meeting with Chief Bruce Kline, Lady's Island / St. Helena Fire Department, Lad Howell, Staff Attorney, William Winn, Director of Public Safety, and Donna Ownby, EMS Director re: Hunting Island State Park
- Finance Committee meeting at Beaufort Industrial Village (BIV) #2
- Community Services Committee meeting at BIV #2

**February 16, 2010**

- Conference call with Lyle Sumeck, Facilitator, County Council's Annual Planning meeting
- Meeting with Frank Turano, of HSA Engineers & Scientists, Bluffton

**February 17, 2010**

- Agenda review meeting
- Meeting with Penn Center Board of Directors, County staff and representatives of Liollo Architecture re: Penn Center / St. Helena library

**February 18 – 19, 2010**

- County Council Annual Planning meeting at Beaufort-Jasper Water & Sewer Authority



## Memorandum

DATE: February 19, 2010  
TO: County Council  
FROM: Bryan Hill, Deputy County Administrator  
SUBJECT: Deputy County Administrator's Progress Report

---

The following is a summary of activities that took place February 8, 2010 thru February 19, 2010:

February 8, 2010 (Monday)--Bluffton:

- Work on Department Budgets

February 9, 2010 (Tuesday):

- Meet with Phil Foot, Detention Center Director
- Work on Description of Services & Goals submitted by Department Heads
- Work on Department Budgets

February 10, 2010 (Wednesday):

- Meet with Jerri Roseneau Re: Courthouse Issues
- Tour New City Complex with Gary Kubic and Scott Dadson, Beaufort City Manager

February 11, 2010 (Thursday)--Bluffton:

- Meet with Weston Newton, Chairman and Rob McFee, Public Services Director to discuss Courthouse improvements
- Meet with Anthony Barrett, Town of Bluffton, re: Oyster Factory Park Funding

February 12, 2010 (Friday)--Bluffton:

- Meet with Steve Riley, Town of Hilton Head Island re: Town-Owned Recreation Facilities

February 15, 2010 (Monday):

- DA Meeting
- Telephone Conference with Lyle Sumeck re: County Council Retreat Agenda
- Meet with Phyllis White, School District, re: Mobile Home Donation to Sheriff Department for Buckwalter Recreation Center Substation
- Finance Committee Meeting
- Community Services Meeting

February 16, 2010 (Tuesday):

- Meeting with Gary Kubic, County Administrator, Robert McFee, Public Services Director, Anthony Criscitiello, Planning & Development re: Office Space for Coroner at Beaufort Industrial Village
- Work on County Council Retreat Agenda Items

February 17, 2010 (Wednesday):

- Agenda Review
- Prepare for County Council Retreat

February 18, 2010 (Thursday):

- Attend County Council Retreat at BJSWA

February 19, 2010 (Friday):

- Attend County Council Retreat at BJSWA



# Beaufort County 1% Sales Tax Road Improvement Projects Monthly Progress Report



## Beaufort County Council Update

Presented Monday, February 22, 2010

Prepared by

**DENNIS**  
CORPORATION

# Program Referendum



In a November 7, 2006 referendum during a general election, Beaufort County voters approved an ordinance authorizing the imposition of a Transportation Sales and Use Tax. The one percent (1%) tax was authorized to finance the transportation-related projects summarized on the following page and was to be collected for six years or until \$152,000,000 was raised.

The South Carolina State Treasurer's office began collecting the tax within Beaufort County and its municipalities on May 1, 2007 and issued the first check to the County on September 30, 2007. The County continues to receive checks quarterly, usually within three weeks of the end of a quarter. Collection receipts to date are summarized on page 3 and have greatly exceeded all expectations. Collections are scheduled to cease on April 30, 2013 or once \$152,000,000 has been collected. If the current collection rate continues, the tax could stop being collected a full year early.

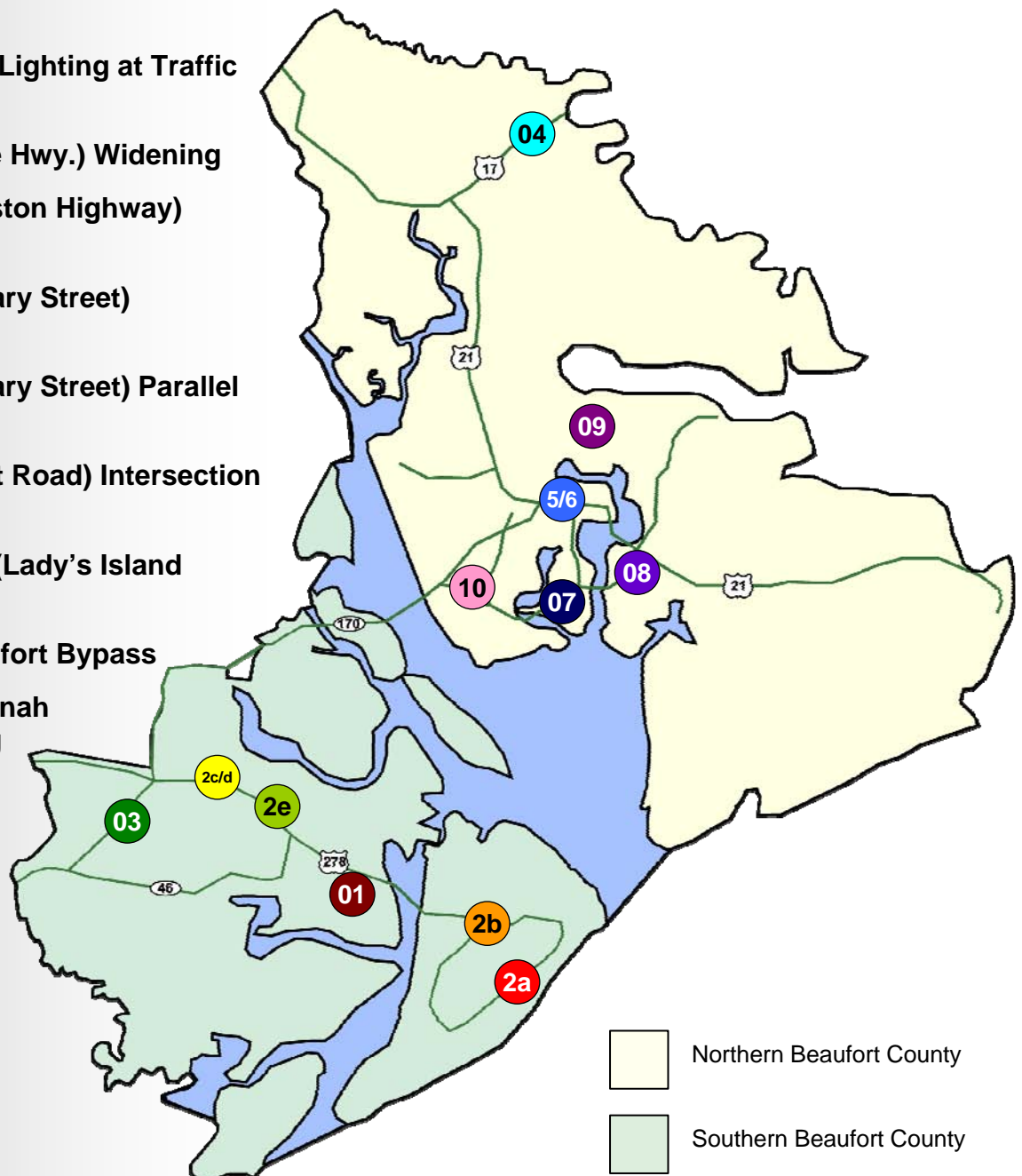
## OFFICIAL RESULTS FOR BEAUFORT COUNTY

SUMMARY REPT-GROUP DETAIL  
 RUN DATE:11/11/06 03:28 PM

	TOTAL VOTES	%	Ivotronic	Paper
Local Question 2A				
VOTE FOR 1				
703 Yes, in favor of the question . . .	22,535	57.88	21,482	1,053
704 No, opposed to the question. . .	16,400	42.12	15,561	839

# Project Locations

- 01 – Bluffton Parkway
- 2A – US 278 (William Hilton Parkway) Resurfacing
- 2B – US 278 Intersection Realignment
- 2C – US 278 (Fording Island Road) Widening
- 2D – US 278 (Fording Island Road) Frontage Roads
- 2E – US 278 Street Lighting at Traffic Signals
- 03 – SC 170 (Okatie Hwy.) Widening
- 04 – US 17 (Charleston Highway) Widening
- 05 – US 21 (Boundary Street) Improvements
- 06 – US 21 (Boundary Street) Parallel Road
- 07 – SC 802 (Ribaut Road) Intersection Improvements
- 08 – SC 802/US 21 (Lady's Island Drive) Widening
- 09 – Northern Beaufort Bypass
- 10 – SC 802 (Savannah Highway) Widening



Northern Beaufort County  
 Southern Beaufort County

# Actual vs. Forecasted Sales Tax Revenue

<b>Fiscal Year</b>	<b>Date Received</b>	<b>Forecasted Receipts</b>	<b>Actual Receipts (Including Interest)</b>
2008, 1st Quarter	9/30/2007	\$6,333,333	\$7,838,127
2008, 2nd Quarter	12/31/2007	\$6,333,333	\$7,275,319
2008, 3rd Quarter	3/31/2008	\$6,333,333	\$7,549,882
2008, 4th Quarter	6/30/2008	\$6,333,333	\$7,783,702
2009, 1st Quarter	9/30/2008	\$6,333,333	\$9,776,468
2009, 2nd Quarter	12/31/2008	\$6,333,333	\$7,358,061
2009, 3rd Quarter	3/31/2009	\$6,333,333	\$6,741,168
2009, 4th Quarter	6/30/2009	\$6,333,333	\$6,869,869
2010, 1st Quarter	9/30/2009	\$6,333,333	\$8,678,086
2010, 2nd Quarter	12/31/2009	\$6,333,333	\$6,881,082
		<b>\$63,333,330</b>	<b>\$76,751,764</b>

# New Money from Federal Stimulus Package

## ARRA I

Date Received	Project Allocation	Amount Received
April 2, 2009	SC 46 (Bluffton Road) Widening	\$4,500,000
	Simmonsville Road Widening	\$2,500,000
April 16, 2009	Project 2A - US 278 (William Hilton Parkway) Resurfacing	\$2,210,734
<b>Total Received</b>		<b>\$9,210,734</b>



**American Recovery and  
Reinvestment Act**

# New Money from Second Federal Stimulus Package

## ARRA II

### Possible Federal Funding for Shovel Ready Projects

The U.S. Congress is currently considering an additional stimulus bill known as the "Jobs for Main Street" or "ARRA II" bill. It has been passed by the House and should be taken up for consideration by the Senate this month. On January 21, 2010 the South Carolina Department of Transportation (SCDOT) Commission recommended dedicating \$6,000,000 toward the US 278 Widening Project, contingent on passing of the ARRA II Bill. US 278 will be widened to six lanes west of Simmonsville as far as funding allows. Additional ARRA funding would allow widening to be performed that much further.

Date Requested	Project Allocation	Amount Requested
January 21, 2010 (Proposed by SCDOT)	Project 2C - US 278 Widening	\$6,000,000
<b>Total Requested</b>		<b>\$6,000,000</b>

# Requested Federal Funding

## State Infrastructure Bank (SIB) Application

Beaufort County is currently awaiting evaluation of the application for funding from the SIB. Since the Bank currently is not funded, they are holding off on reviewing any proposals at this time.

The application requesting funding for three of the Beaufort County 1% Sales Tax Road Improvement Program projects was submitted on September 18, 2008 and was presented to the SIB board on October 16, 2008. Included in this proposal were the SC 802 widening and new bridge project, SC 170 widening project, and the completion of the Bluffton Parkway. The total combined cost for the projects is \$219,905,547 with 60% being provided by Beaufort County, a portion of which came from the 1% Sales Tax. Beaufort County's 60% match is one of the highest match percentages the SIB ever has received in a request to date.



**Donald D. Leonard**  
Chairman  
Myrtle Beach, SC

## South Carolina Transportation Infrastructure Bank Board



**Max Metcalf**  
Vice-Chairman  
Greenville, SC



**Ric Tapp**  
Secretary  
Charleston, SC



**Henry Taylor**  
SCDOT Highway  
Commission  
Chairman  
West Columbia, SC



**Ernest Duncan**  
Aiken, SC



**Senator Hugh  
Leatherman**  
Florence, SC



**Rep. Harry B. "Chip"  
Limehouse III**  
Charleston, SC

# Potential Federal Funding

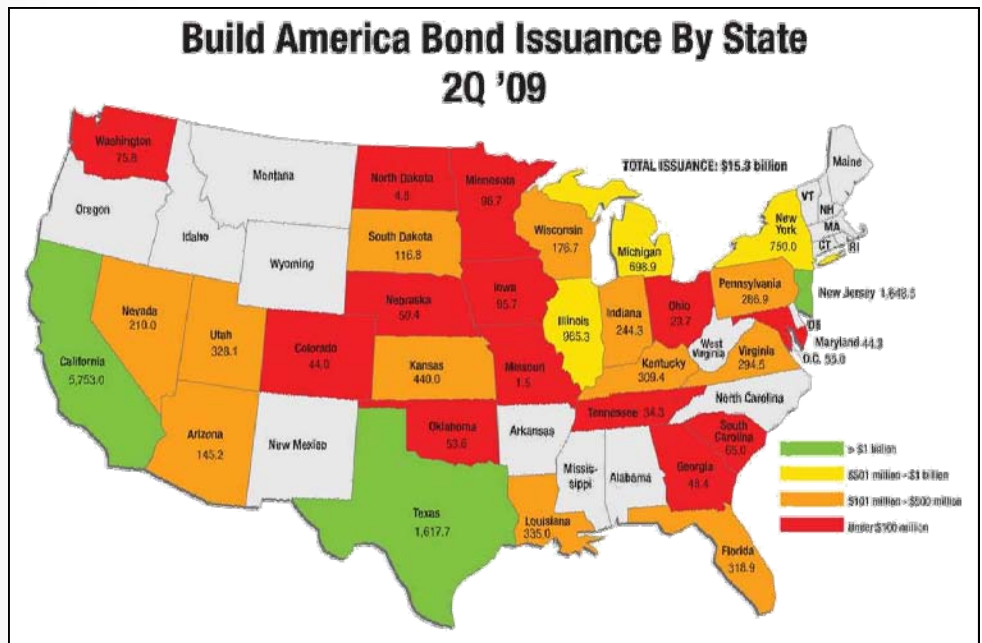
## Build America Bonds

### Overview

Build America Bonds are a form of taxable municipal bonds, created under the Recovery and Reinvestment Act of 2009. The term “taxable municipal bonds” means that the Build America Bonds are issued by state and local governments and are taxable on an income statement. 35% of the interest payments for a Build America Bond are subsidized by the United States Government. Overall, this helps states borrow at a lower cost. IRS Commissioner Doug Shulman says, “these innovative bonds give state and local governments an important new tool to help finance public capital projects that will benefit communities in challenging times.” There are two fundamental types of Build America Bonds according to the Securities Industry and Financial Markets Association, direct payment bonds, and tax credit bonds

**Direct Payment Bonds** occur when the United States Government subsidizes 35% of the interest payments. These types of bonds cannot be used for refunding, working capital or private activity bonds. The American Association of State Highway and Transportation Officials (AASHTO) Center for Excellence in Project Finances gives this example: “...under this approach on a \$1,000 bond, the issuer would pay 100 percent of the taxable rate interest cost to the investor (\$100) and apply for a refundable tax credit itself from the U.S. Treasury in an amount equal to 35 percent of the gross interest paid by the issuer (\$35).”

**Tax Credit Bonds** occur when the bond owner gets a 35% refundable tax credit. AASHTO says, “...if an investor required a ten percent return (\$100) on a \$1,000 bond, the issuer would pay \$74.07 in interest and the investor would receive a supplemental credit equal to 35 percent of the interest the issuer paid, or \$25.93, to provide the total desired annual return of \$100. In this manner, the effective interest rate for the issuer is reduced by 26 percent. The investor can apply the tax credits against regular income tax liability and alternative minimum tax, and unused tax credits may be carried forward to the next year.” The map to the right shows the amount of Build America Bonds issued per state.



Source: Securities Industry and Financial Markets Association

### Transportation Industry

There is no limit on the amount of Build America Bonds a local or state government can issue. This means that these governments can easily fund projects without worrying about being heavily in debt. This benefits those in many industries including the transportation industry. The ability to fund transportation projects throughout the states allows for more jobs, better roads and services, and worry-free borrowing. South Carolina currently is using under \$100 million, but can and should continue to take advantage of this program in order to further enhance its roadways and other transportation projects throughout the state.



# Project Cost Summary

- Project is under construction
- Project is complete

	Original Budget (2006)	County Expenditures to Date	County Obligations
<b>01 Bluffton Parkway Phases 5A &amp; 5B</b>	\$60,000,000	\$15,754,812	\$10,058,010
<b>2A US 278 (William Hilton Pkwy.) Resurfacing Gum Tree Road to Sea Pines Circle</b>	\$4,700,000	\$0	\$4,700,000
<b>2B US 278 Intersection Realignment Squire Pope Road</b>	\$2,000,000	\$1,589,378	\$50,000
<b>2C US 278 (Fording Island Rd.) Widening SC 170 (Okatie Hwy.) to Simmonsville Road</b>	\$39,630,000	\$2,400,356	\$800,119
<b>2D US 278 (Fording Island Rd.) Frontage Roads Six Sections</b>	\$13,100,000	\$461,976	\$505,081
<b>2E US 278 Street Lighting at Traffic Signals SC 170 (Okatie Hwy.) to Hilton Head Island</b>	\$100,000	\$81,784	\$18,534
<b>03 SC 170 (Okatie Highway) Widening SC 46 (May River Rd.) to Tide Watch Dr.</b>	\$26,000,000	\$1,091,530	\$416,475
<b>04 US 17 (Charleston Hwy.) Widening US 21 (Gardens Corner) to Lightsey Plantation Road (Colleton County)</b>	\$100,471,305	\$7,000,000	\$0
<b>05 US 21 (Boundary St.) Improvements Neil Road to Palmetto Street</b>	\$13,250,000	\$732,019	\$30,481
<b>06 US 21 ( Boundary St.) Parallel Road SC 170 (Robert Small Pkwy.) to Sycamore Street</b>	\$8,750,000	\$434,873	\$2,627
<b>07 SC 802 (Ribaut Rd.) Intersection Improvements 3 between Lenora Drive and Lady's Island Drive</b>	\$600,000	\$334,038	\$605,729
<b>08 SC 802/US 21 (Lady's Island Dr.) Widening Ribaut Road to Sea Island Parkway</b>	\$35,500,000	\$10,002,130	\$33,193,415
<b>09 Northern Beaufort Bypass US 21 (Grays Hill) to Brickyard Point Rd.</b>	\$6,000,000	\$316,088	\$788,912
<b>10 SC 802 (Savannah Hwy.) Widening SC 170 to Parris Island Gateway</b>	\$7,200,000	\$2,102,708	\$5,345,106
	<b>\$317,301,305</b>	<b>\$42,301,692</b>	<b>\$56,514,488</b>

# Value Engineering

## Understanding Value Engineering

The Federal Highway Administration defines Value Engineering (VE) as the systematic application of recognized techniques by a multidiscipline team to identify the function of a product or service; establish a worth for that function; generate alternatives through the use of creative thinking; and provide the needed functions to accomplish the original purpose of the project, reliably and at the lowest life cycle cost without sacrificing safety, necessary quality, and environmental attributes of the project. **The goal of a VE study is to achieve design excellence.** Its objectives are to improve quality, minimize total ownership costs, reduce construction time, make the project easier to construct, ensure safe operations, and ensure environmental and ecological goals.

## Why Provide Value Engineering

Extra analysis always is beneficial for catching unforeseen errors and for providing recommendations for improvement. A fresh set of eyes taking an unbiased look at a project may come up with alternate solutions to alleviate delays, reduce construction and Right-of-Way acquisition costs, minimize environmental impacts, and cause less disruption to the public.

## Examples of Value Engineering in the Beaufort Sales Tax Program

### Bluffton Parkway

- Researched differences in construction costs between the March 31, 2009 cost estimate and the cost estimate submitted on February 10, 2010. The new cost estimate eliminates the 1600' retaining wall along the eastbound ramp US 278 merge lane adjacent to the marsh, resulting in \$2,088,171.50 in savings.
- Offered a different bridge pier design to reduce the wetland impact, thus reducing the mitigation needs from 3.0 acres to 0.68 acres. This, plus receiving a donation of credits from the SCDOT, saved months of permit approval time and \$3.9 million in savings.
- Designed access road at Anolyn Court to prevent limiting access to businesses on Buckingham Plantation Road, resulting in \$1 million savings in damages compensation.

### US 278 / William Hilton Parkway Resurfacing

- Recognized availability of ARRA stimulus funds to finance portions of the project, which otherwise would not have been funded.

### US 278 Widening

- Recognized possible availability of ARRA II stimulus funds to finance widening of additional mileage, which otherwise would not be funded.

### US 278 Frontage Roads

- Altered road alignment for the eastern Tanger frontage road, resulting in almost \$1 million savings in acquisition costs.

### US 278 Street Lighting at Traffic Signals

- ITS installer, Roger Burriss, provided plans through a Constructability Plan Review before being issued to bidders; reducing opportunities for expensive construction change orders.
- Independent review of plans by Palmetto Electric's Bob Cassavant resulted in light fixtures, which provide softer light, cost less to operate, and are more readily available to replace.

### SC 170 Widening

- Determined that certain developers are contractually bound to provide certain amounts of Right-of-Way at no cost to the County.

# Value Engineering

- Provided plan review to reduce wetland impacts from 1 acre to less than 1/2 an acre; allowing the County's project to fall under a simpler and faster general permit and reducing mitigation costs.

## Boundary Street Parallel Road

- Determined there is no current need to pursue design since there are no funds to construct the project, saving \$200,000 in design fees.

## Ribaut Road Intersection Improvements

- Construction Manager made constructability recommendations before drawings were issued to bidders, significantly reducing opportunities for construction change orders.

## SC 802 Widening

- Bridge girder design modified to reduce bridge construction cost.
- Removed Ribaut Road turn lanes from scope of project; allowing Advance Auto Parts parking spaces to be saved. This resulted in \$1.7 million savings in acquisition costs and eliminated the need to reopen approved environmental document.
- Drainage engineers incorporated stormceptor treatment devices on Segment B to treat runoff from impervious surfaces. This satisfied a strict condition of the SCDHEC-OCRM permit and allowed the County to obtain the permit and begin construction. Additionally, this saved further design and Right-of-Way expense of excess settling basins.
- Design alternatives were studied near the intersection of SC 802 and Riverwind Drive but were eliminated as infeasible. Costly alternatives, such as an additional road beneath the bridge would have further impacted salt marsh wetlands and required over \$250,000 in additional mitigation monies.
- Beaufort County partnered with Beaufort-Jasper Water and Sewer Authority (BJWSA) to include their water line relocation activities with the roadway permits, eliminating time-consuming permitting activities and over \$100,000 in mitigation costs for BJWSA.
- Worked very closely with BJWSA and SCDOT to allow 1300 feet of 20-inch water line to remain in place under roadway, saving over \$700,000 in relocation costs.
- Incorporated water lines into bridge structure to reduce expense and inconvenience of adding them in the future.
- Alternate intersection design was assessed at Islands Causeway and Meridian Road. Impacts to wetlands were minimized, fully eliminating an additional 0.7 acres of impacted salt marsh wetlands.
- Researched and selected cement-stabilized aggregate base instead of asphalt aggregate base, resulting in a construction savings of \$1.54 million.

## Northern Beaufort Bypass

- Project was phased into deliverables including a Feasibility Study and an environmental document to ensure funds are not expended unless properly vetted by County Council.

*Total Estimated Savings  
Through Value Engineering:*  
**\$8,578,171.50**

# Creating Local Jobs

## Local Workers Employed by SC 802 Widening and Bridge Project

Three hundred fourteen million dollars will be raised by the Beaufort County Transportation Improvement Program. According to the FHWA, approximately one job is created for every \$35,000 spent on a road project. The SC 802 widening project in Beaufort County, SC illustrates the successful usage of funds in increasing employment and improving the economy within the County, while enriching the infrastructure of the surrounding region at the same time. By contracting with various local companies and employing almost one hundred Beaufort County residents; Sanders Brothers, United Contractors, subcontractors, vendors, and suppliers have augmented the local economy.

Additionally, many companies indirectly benefited from the project due to the large amount of resources required. These vendors are all located within the Beaufort County area and can anticipate receiving a portion of the estimated \$5 million in revenues solely by providing these resources.

### **Sanders Brothers — Roadway Widening Contract**

Roadway Original Contract Price: \$10,814,732

Job Creation: based on FHWA guidelines the roadway widening contract creates 309 jobs

### **United Contractors — Bridge Contract**

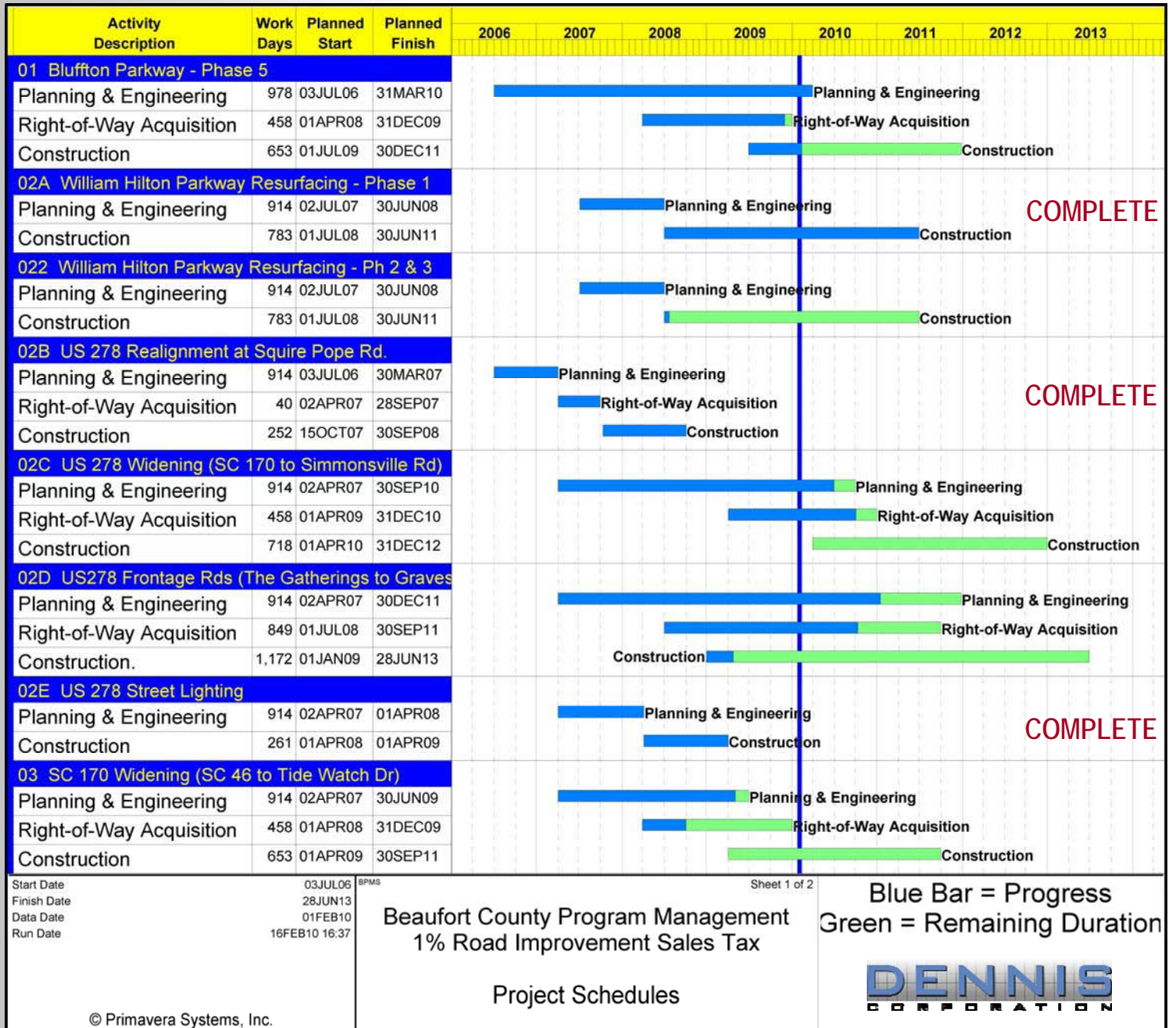
Bridge Original Contract Price: \$34,573,368

Job Creation: based on FHWA guidelines the bridge contract creates 987 jobs



United Contractors' Employees Working on the Bridge Deck Reinforcing Steel for the New SC 802 Bridge

# Project Schedules



# Project Schedules

Activity Description	Work Days	Planned Start	Planned Finish	Year											
				2006	2007	2008	2009	2010	2011	2012	2013				
<b>04 US 17 Widening (US 21 to Colleton County)</b>															
Planning & Engineering	979	03JUL06	30JUN09	[Blue Bar] Planning & Engineering											
Right-of-Way Acquisition	717	02JUL07	31DEC08	[Blue Bar] Right-of-Way Acquisition											
Construction	840	15OCT07	31DEC10	[Blue Bar] Construction											
<b>05 US 21 (Boundary St) Improvements</b>															
Planning & Engineering	979	01JAN07	30SEP10	[Blue Bar] Planning & Engineering											
Right-of-Way Acquisition	717	01JUL08	30MAR11	[Green Bar] Right-of-Way Acquisition											
Construction	846	01JAN10	29MAR13	[Green Bar] Construction											
<b>06 US 21 (Boundary St) Parallel Rd.</b>															
Planning & Engineering	979	01JAN07	30SEP10	[Blue Bar] Planning & Engineering <b>COMPLETE</b>											
<b>07 SC 802 Ribaut Rd Improvements</b>															
Planning & Engineering	979	01JUL06	28SEP07	[Blue Bar] Planning & Engineering											
Right-of-Way Acquisition	261	01APR07	31MAR08	[Blue Bar] Right-of-Way Acquisition											
Construction	391	01JAN08	30JUN09	[Blue Bar] Construction											
<b>08 US 21/ SC 802 (Lady's Island Dr) Widening</b>															
Planning & Engineering	653	01APR07	30SEP09	[Blue Bar] Planning & Engineering											
Right-of-Way Acquisition	652	01OCT08	31MAR11	[Blue Bar] Right-of-Way Acquisition											
Construction	912	01OCT09	29MAR13	[Green Bar] Construction											
<b>09 Northern Beaufort Bypass</b>															
Planning & Engineering	783	01JUL08	30JUN11	[Blue Bar] Planning & Engineering											
<b>10 SC 802 (Savannah Hwy) Widening</b>															
Planning & Engineering	653	01APR07	30SEP09	[Blue Bar] Planning & Engineering											
Right-of-Way Acquisition	652	01OCT08	31MAR11	[Blue Bar] Right-of-Way Acquisition											
Construction	912	01OCT09	29MAR13	[Green Bar] Construction											


  

Start Date	03JUL06	BPMS	Sheet 2 of 2
Finish Date	28JUN13		
Data Date	01FEB10		
Run Date	16FEB10 09:49		

Beaufort County Program Management  
1% Road Improvement Sales Tax

Project Schedules

Blue Bar = Progress  
Green = Remaining Duration



© Primavera Systems, Inc.



# Project Details



# 1. Bluffton Parkway: Phase 5A



## Project Description

This project is one of two that will make the Bluffton Parkway a continuous roadway from US 278 near the Hilton Head Island bridges to SC 170. It is estimated this road, when complete, will reduce traffic on US 278 in the greater Bluffton area by as much as 30 percent. Each new segment will be a controlled-access roadway with two lanes of travel in each direction, turn lanes, and adjacent multi-use pathways.

Segment 5A will bring the Parkway eastward from Burnt Church Road to US 278 near the bridges to Hilton Head Island. It will be a 3-mile, 4-lane divided highway with 8-foot multiuse pathways. A new flyover bridge will allow traffic onto and off US 278 from Bluffton Parkway. A large portion of the roadway will be routed through existing Santee-Cooper power line easements. Santee-Cooper is relocating their transmission lines at three strategic areas to accommodate the new roadway.

**Sales Tax Funding:** \$50,000,000

**State Infrastructure Bank Grant (Requested):** \$46,033,537

**Total Project Funding:** \$96,033,537



Project Location

## Project Personnel

**Design Firm:** Florence & Hutcheson, Inc.

**Project Manager:** David Beaty, Florence & Hutcheson, Inc.

## Local Company Involvement

Company	Location	Responsibilities	Paid to Date
Ward Edwards	Bluffton	5A Wetlands Delineation	\$21,025



## Project Status

On February 8, 2010, Beaufort County Council approved a recommendation by the Beaufort County Transportation Advisory Group (BTAG) not to use the currently limited funds for construction of the Bluffton Parkway flyover bridge at this time. Beaufort County has proceeded to advertise construction of the Phase 5A road portion, anticipating construction starting by Summer, 2010.

## Contract Cost & Schedule Status

	Design	Right-of-Way	Santee-Cooper
Commencement Date:	25-Jan-2006	15-Sep-2008	5-May-2008
Scheduled Completion:	7-Dec-2009	30-Nov-2009	28-May-2010
Original Budget:	\$972,344	\$9,400,000	\$7,823,405
Current Budget:	\$2,755,599	\$12,658,163	\$7,823,405
Expenditures to Date:	\$2,755,599	\$6,871,485	\$5,329,399
Percent Budget Spent:	100%	54%	68%

	Utilities Relocation	Road Construction	Bridge Construction
Commencement Date:	31-Mar-2009	1-Aug-2010	2012
Scheduled Completion:	28-Feb-2010	1-Feb-2012	2014
Original Budget:	\$0	\$30,600,000	\$36,304,419
Current Budget:	\$1,594,317	\$13,016,855	\$34,216,248
Expenditures to Date:	\$92,608	\$0	\$0
Percent Budget Spent:	6%	0%	0%

## Potential Issues

- Litigation on Executive Golf Course, Tract 55
- Litigation on Inland Western, Tracts 42 and 33

## Activities Since Last Period

- Road construction bid documents prepared and advertised for bids
- Property negotiation court dates finalized
- Permit coordination with US Army Corps of Engineers

## Planned Activities for Next Period

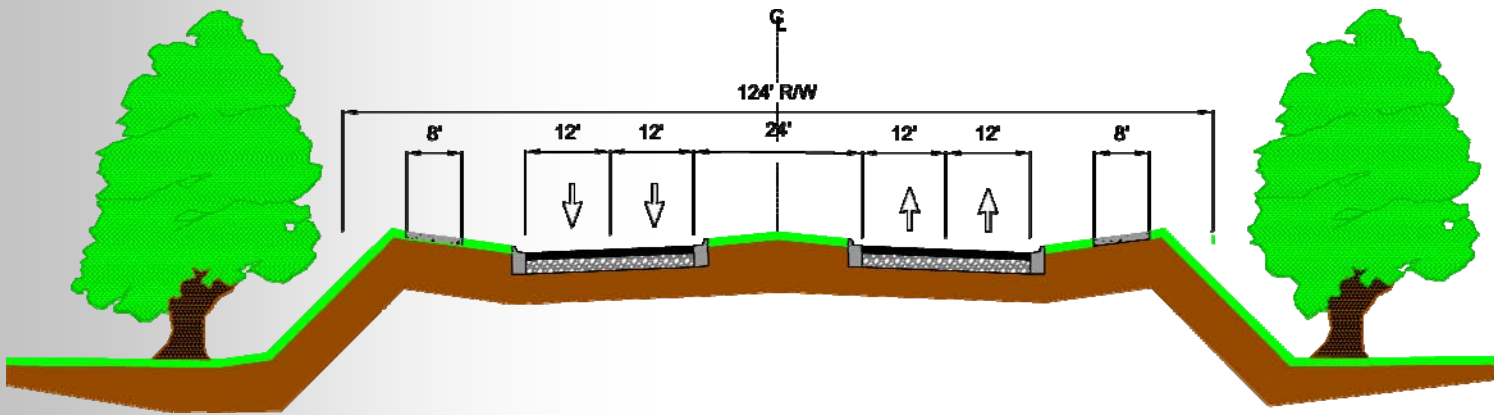
- Receive construction bids
- Complete Right-of-Way acquisitions
- **Next Milestone:** Receive US Army Corps of Engineers Permit



Rendering of the Proposed Bluffton Parkway Flyover as it Crosses over US 278 Looking West



Rendering of the Proposed Bluffton Parkway Flyover as it Crosses over US 278 Looking East



Project Typical Cross-section



Santee-Cooper Moving New Power Poles into Place



Final Four Power Poles to be replace along the Proposed 5A Project Area

# 1. Bluffton Parkway: Phase 5B



## Project Description

This project is one of two that will make the Bluffton Parkway a continuous roadway from US 278 near the Hilton Head Island bridges to SC 170. It is estimated this road, when complete, will reduce traffic on US 278 in the greater Bluffton area by as much as 30 percent. Each new segment will be a controlled-access roadway with two lanes of travel in each direction, turn lanes, and adjacent multi-use pathways.

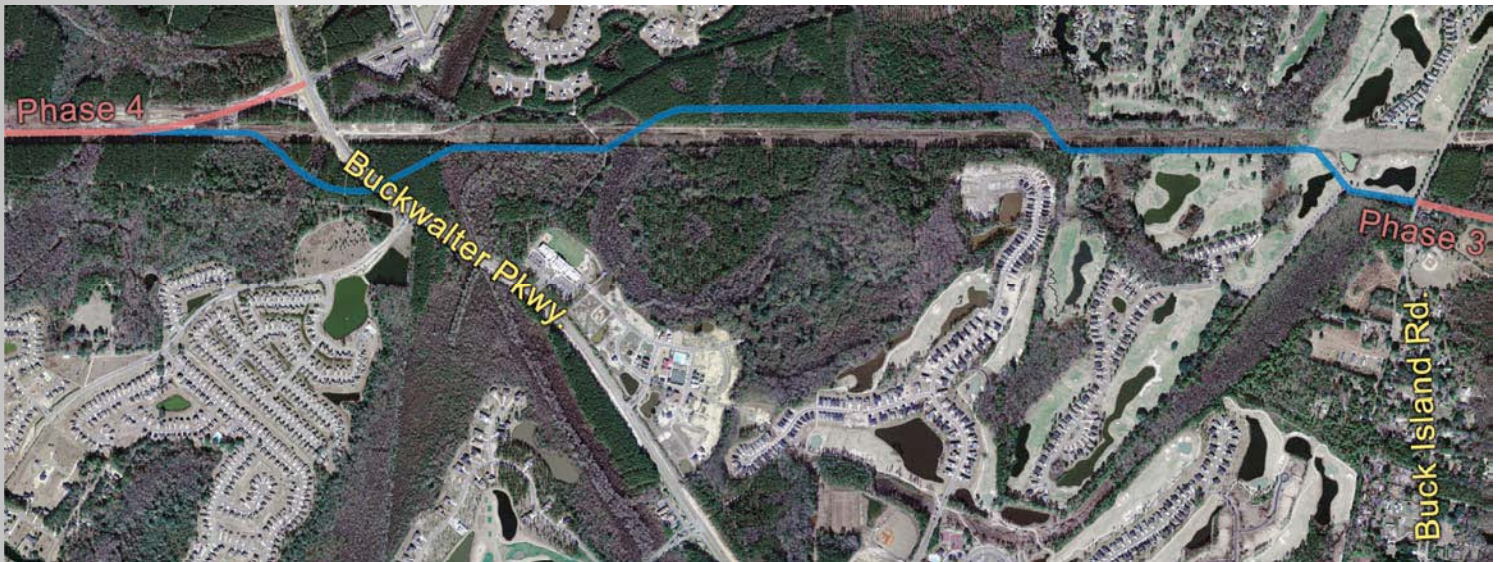
Segment 5B will provide the Parkway a better alignment from existing Phase 3 at Buck Island Road to the existing Phase 4 at Buckwalter Parkway. It will be a 2.5 mile, 4-lane divided roadway to eliminate undesirable left turns where the Parkway otherwise would enter and leave Buckwalter Parkway; 8-foot multi-use pathways will be a part of this project.

**Sales Tax Funding:** \$0

**Impact Fee Funding:** \$10,000,000

**State Infrastructure Bank Grant (Requested):** \$24,033,200

**Total Project Funding:** \$34,033,200



Project Location

## Project Personnel

**Design Firm:** Florence & Hutcheson, Inc.

**Project Manager:** David Beaty, Florence & Hutcheson, Inc.

## Local Company Involvement

Company	Location	Responsibilities	Paid to Date
Ward Edwards	Bluffton	5B Wetlands Delineation	\$19,826

## Project Status

Right-of-Way plans and final utilities plans have been submitted and permit applications are being assembled.

## Contract Cost & Schedule Status

	Design	Right-of-Way	Utilities Relocation
Commencement Date:	25-Jan-2006	TBD	TBD
Scheduled Completion:	7-Dec-2009	TBD	
Original Budget:	\$651,000	\$3,376,656	
Current Budget:	\$892,208	\$4,100,000	
Expenditures to Date:	\$705,721	\$0	
Percent Budget Spent:	79%	0%	

	Construction	CEI
Commencement Date:	TBD	TBD
Scheduled Completion:	TBD	
Original Budget:	\$15,000,000	
Current Budget:	\$18,569,470	
Expenditures to Date:	\$0	
Percent Budget Spent:	0%	

## Potential Issues

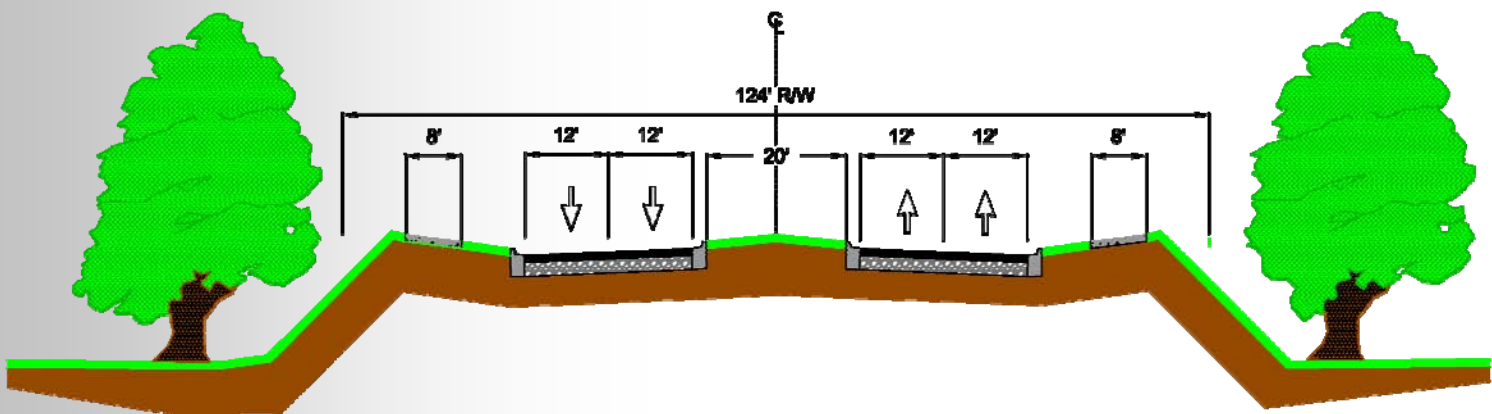
- Funding

## Activities Since Last Period

- Permit documentation gathered

## Planned Activities for Next Period

- Preparing permit for United States Army Corps of Engineers (USACE)
- **Next Milestone:** Permit approval



Project Typical Cross-section

# 2a. US 278 (William Hilton Parkway) Resurfacing



## Project Description

This project involves the resurfacing of William Hilton Parkway from Gum Tree Road to Sea Pines Circle. Approximately 7.5 miles are being broken into three phases: 1) Whooping Crane Way to Shelter Cove Lane, 3.56 miles long; 2) Shelter Cove Lane to Sea Pines Circle, 3.88 miles long; and 3) Gumtree Road to Whooping Crane Way 1.03 miles long.

**Sales Tax Funding:** \$4,700,000

**Stimulus Funding:** \$2,210,734

**Total Project Funding:** \$6,910,734

## US 278 Business (William Hilton Parkway) Resurfacing

### PHASE ONE – Yellow – 3.56 miles

Whooping Crane Way (MP 1.55) to Shelter Cove Lane (MP 5.11)

- Project Let – October, 2008 – SC File: 07.036936A
- Engineer's Estimate — \$2,377,491
- Low Bid (APAC) - \$2,637,845
- TOTAL COST – \$3,033,522 (Bid + 5% Contingency + 10% CEI)
- Completion Date – April, 2009

### PHASE TWO – Green – 3.88 miles

Shelter Cove Lane (MP 5.11) through Sea Pines Circle (MP 8.99)

- Project Let – February 9, 2010

### PHASE THREE – Orange – 1.03 miles

Gumtree Road (MP 0.52) to Whooping Crane Way (MP 1.55) and Pinckney Island Portion

- Project Let – February 9, 2010



Project Location

## Project Personnel

**Design Firm:** SCDOT

**Project Manager:** John Boylston, SCDOT

## Local Company Involvement

None to date

## Project Status

Phase 1: Whooping Crane Way to Shelter Cove Lane, approximately 3.56 miles long, is complete. Phases 2 and 3: starting construction in Spring, 2010 with an SCDOT specified completion date of March 31, 2011. SCDOT is managing all aspects of this project.

## Phase 1 Contract Cost & Schedule Status

	Design	Right-of-Way	Utilities Relocation
Commencement Date:	24-Jan-2008	N/A	N/A
Scheduled Completion:	10-Feb-2009		
Original Budget:	\$400,000		
Current Budget:	\$500,000		
Expenditures to Date:	\$0		
Percent Budget Spent:	0%		

**PROJECT COMPLETE**

	Construction	CEI
Commencement Date:	1-Dec-2008	SCDOT Managed
Scheduled Completion:	Complete	
Original Budget:	\$1,600,000	
Current Budget:	\$2,429,522	\$104,000
Expenditures to Date:	\$0	
Percent Budget Spent:	0%	

## Phase 2 and 3 Contract Cost & Schedule Status

	Design	Right-of-Way	Utilities Relocation
Commencement Date:	4-May-2009	N/A	N/A
Scheduled Completion:	30-Oct-2009		
Original Budget:	\$400,000		
Current Budget:	\$500,000		
Expenditures to Date:	\$0		
Percent Budget Spent:	0%		

	Construction	CEI
Commencement Date:	18-Jan-2010	SCDOT Managed
Scheduled Completion:	9-Apr-2010	
Original Budget:	\$2,300,000	
Current Budget:	\$3,898,690	\$179,000
Expenditures to Date:	\$0	
Percent Budget Spent:	0%	

## Potential Issues

- None at this time

## Activities Since Last Period

- Construction bids received by SCDOT for Phases 2 & 3 on February 9, 2010
- The apparent low bidder for Phases 2 & 3 is APAC Southeast at \$3,898,690

## Planned Activities for Next Period

- SCDOT will approve construction contract
- **Next Milestone:** Construction notice to proceed

### Phase 1— Gardner Drive and US 278 / William Hilton Parkway Intersection



Before



After

### Phase 2 and 3 — Problem Areas



Intersection of US 278 and Jarvis Park Road



Intersection of US 278 and Gumtree Road



# 2b. US 278 Intersection Realignment



**PROJECT COMPLETE**

## Project Description

This project consisted of intersection improvements and widening on US 278 (William Hilton Parkway) at Squire Pope Road on Hilton Head Island.

**Sales Tax Funding:** \$2,000,000

**Total Project Funding:** \$2,000,000

## Project Personnel

**Design Firm:** Wilbur Smith Associates

**Project Manager:** Darin Shoemaker, Town of Hilton Head Island

## Project Status

Project complete.

## Contract Cost & Schedule Status

	Design	Right-of-Way	Utilities Relocation
<b>Commencement Date:</b>	28-Jan-2008	28-Jan-2008	28-Jan-2008
<b>Scheduled Completion:</b>	Complete	Complete	Complete
<b>Original Budget:</b>	\$198,308	\$0	\$0
<b>Current Budget:</b>	\$257,297	\$99,750	\$335,463
<b>Expenditures to Date:</b>	\$257,396	\$63,356	\$335,463
<b>Percent Budget Spent:</b>	100%	64%	100%

	Construction	CEI
<b>Commencement Date:</b>	1-Mar-2008	1-Mar-2008
<b>Scheduled Completion:</b>	Complete	Complete
<b>Original Budget:</b>	\$961,956	\$0
<b>Current Budget:</b>	\$1,251,338	\$59,223
<b>Expenditures to Date:</b>	\$873,940	\$59,223
<b>Percent Budget Spent:</b>	70%	100%



Realignment of the intersection of US 278 and Squire Pope Road with New Mast Arm Signals, which is Complete and Fully Operational

# 2c. US 278 Widening: SC 170 to Simmonsville Road



## Project Description

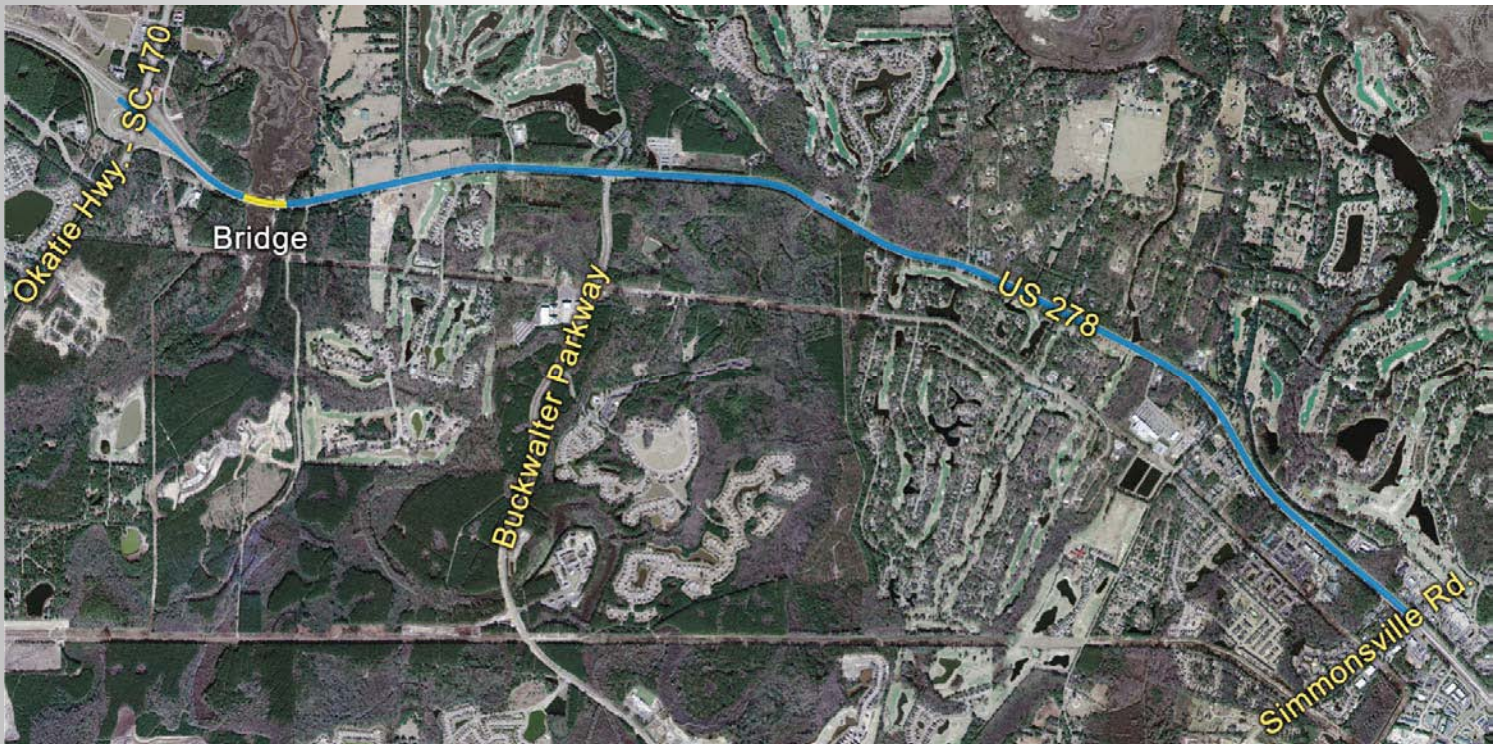
This project consists of widening US 278 to six lanes from SC 170 to Simmonsville Road. It includes intersection improvements and widening at the Buck Island Road signal.

**Sales Tax Funding:** \$17,600,000

**Impact Fee Funding:** \$7,000,000

**Federal Portion of SAFETEA-LU Earmark:** \$12,802,000

**Total Project Funding:** \$37,402,000



Project Location

## Project Personnel

**Design Firm:** SCDOT

**Project Manager:** John Boylston, SCDOT

## Local Company Involvement

None to date

## Project Status

SCDOT is negotiating property acquisitions for necessary Right-of-Way. SCDOT is managing all aspects of this project.

## Contract Cost & Schedule Status

	Design	Right-of-Way	Utilities Relocation
Commencement Date:	15-Nov-2007	9-Nov-2009	SCDOT Managed
Scheduled Completion:	26-May-2010	14-May-2010	
Original Budget:	\$3,200,475	\$2,725,000	
Current Budget:	\$700,000	\$2,600,000	
Expenditures to Date:	\$500,000	\$1,900,356	
Percent Budget Spent:	71%	73%	

	Construction	CEI
Commencement Date:	10-Sep-2010	SCDOT Managed
Scheduled Completion:	10-Sep-2012	
Original Budget:		
Current Budget:	\$26,000,000	
Expenditures to Date:		
Percent Budget Spent:		

## Potential Issues

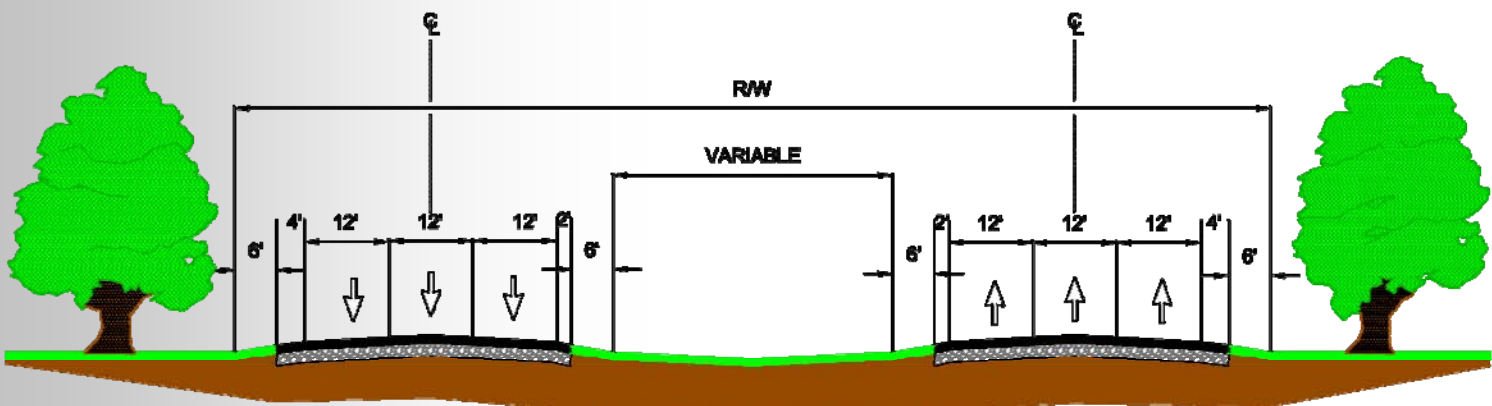
- SCDOT waiting on municipal agreement with Town of Bluffton
- Barrier wall at SC 170
- Stormwater runoff at headwaters of Okatie River

## Activities Since Last Period

- SCDOT proposed \$6 million in potential ARRA II stimulus funds on January 21, 2010
- Right-of-Way is being acquired

## Planned Activities for Next Period

- Construction funding to be obligated May, 2010
- Construction letting planned for July, 2010
- **Next Milestone:** Complete Right-of-Way acquisition and final plans



Project Typical Cross-section

## Project Description

Medians are planned for sections of US 278, which will eliminate left turns from some establishments. This will require frontage roads to be added at seven areas to allow intersection access. Currently planned frontage roads are listed below and highlighted in detail on the following pages.

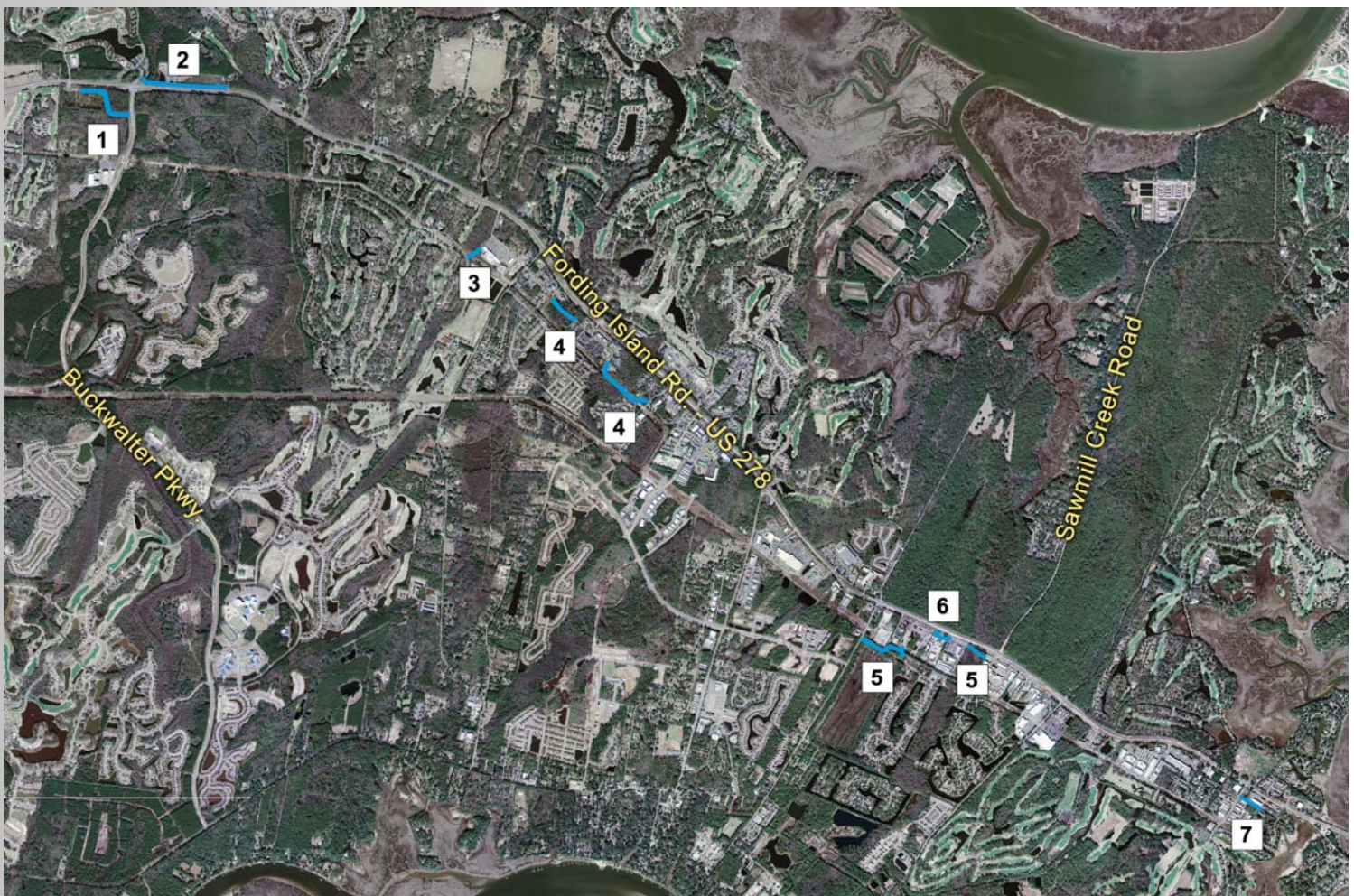
1. Buckwalter Commercial
2. St. Gregory
3. Rose Hill
4. Plantation Business Park
5. Tanger 1 Outlet
6. Tanger Interconnectivity
7. The Gatherings

**Sales Tax Funding:** \$3,600,000

**Impact Fee Funding:** \$6,000,000

**Town of Hilton Head Island Funding:** \$1,100,000

**Total Project Funding:** \$10,700,000



US 278 Frontage Roads in Relation to US 278 / Fording Island Road

**PROJECT COMPLETE**

## Project Description

The Buckwalter Commercial frontage road will relieve traffic from US 278 by connecting Lost Oaks Drive to the Buckwalter Parkway. Two medians are scheduled to be closed by SCDOT on US 278 near this project area. This frontage road will be a two lane road. Each lane will be 11 feet wide with 6-foot wide shoulders on each side.



Project Location

## Project Personnel

Design Firm: Florence & Hutcheson, Inc.

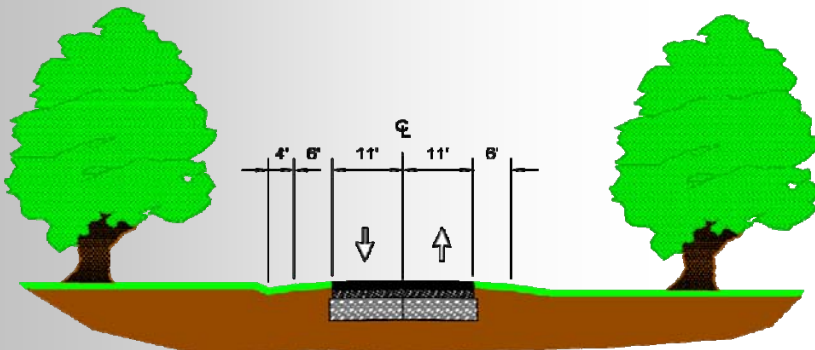
Project Manager: David Beaty, Florence & Hutcheson, Inc.

## Project Status

Design is complete. All documents for execution were submitted to Town of Bluffton at the end of November, 2008.

## Contract Cost & Schedule Status

	Design	Right-of-Way	Utilities Relocation
Commencement Date:	27-May-2008	<b>Town of Bluffton to Implement Plans</b>	
Scheduled Completion:	20-Nov-2008		
Original Budget:	\$39,754		
Current Budget:	\$39,754		
Expenditures to Date:	\$10,666		
Percent Budget Spent:	27%		



Project Typical Cross-section

# 2d. US 278 Frontage Roads: St. Gregory



## Project Description

St. Gregory the Great frontage road will help accommodate church parishioners entering and leaving US 278. This frontage road will connect the entrance of Berkeley Hall east to the entrance of St. Gregory and continue to the fire station. The median outside the entrance of St. Gregory is scheduled to be closed by SCDOT. This frontage road will be a two-lane road. Each lane will be 12 feet wide with 3-foot wide shoulders on each side.

## Project Personnel

**Design Firm:** Ward Edwards

**Project Manager:** Kristy Carr, Ward Edwards

## Local Company Involvement

Company	Location	Responsibilities	Paid to Date
Ward Edwards	Bluffton	Professional Engineering Services	\$39,940

## Project Status

- Design complete, awaiting USACE permit and condemnation determination
- Sanders Brothers Construction Company's bid of \$587,457.32 was lowest of eleven bids received on May 28, 2009
- Construction bid is good through April 30, 2010

## Contract Cost & Schedule Status

	Design	Right-of-Way	Utilities Relocation
<b>Commencement Date:</b>	27-May-2008	TBD	N/A
<b>Scheduled Completion:</b>	5-Nov-2008	TBD	
<b>Original Budget:</b>	\$34,800	\$0	
<b>Current Budget:</b>	\$50,328	\$0	
<b>Expenditures to Date:</b>	\$56,144	\$3,250	
<b>Percent Budget Spent:</b>	100%	100%	

	Construction	CEI
<b>Commencement Date:</b>	TBD	TBD
<b>Scheduled Completion:</b>	TBD	
<b>Original Budget:</b>	\$617,000	
<b>Current Budget:</b>	\$587,457	
<b>Expenditures to Date:</b>		
<b>Percent Budget Spent:</b>		

## Potential Issues

- Berkeley Hall condemnation challenge was filed on December 2, 2008

## Activities Since Last Period

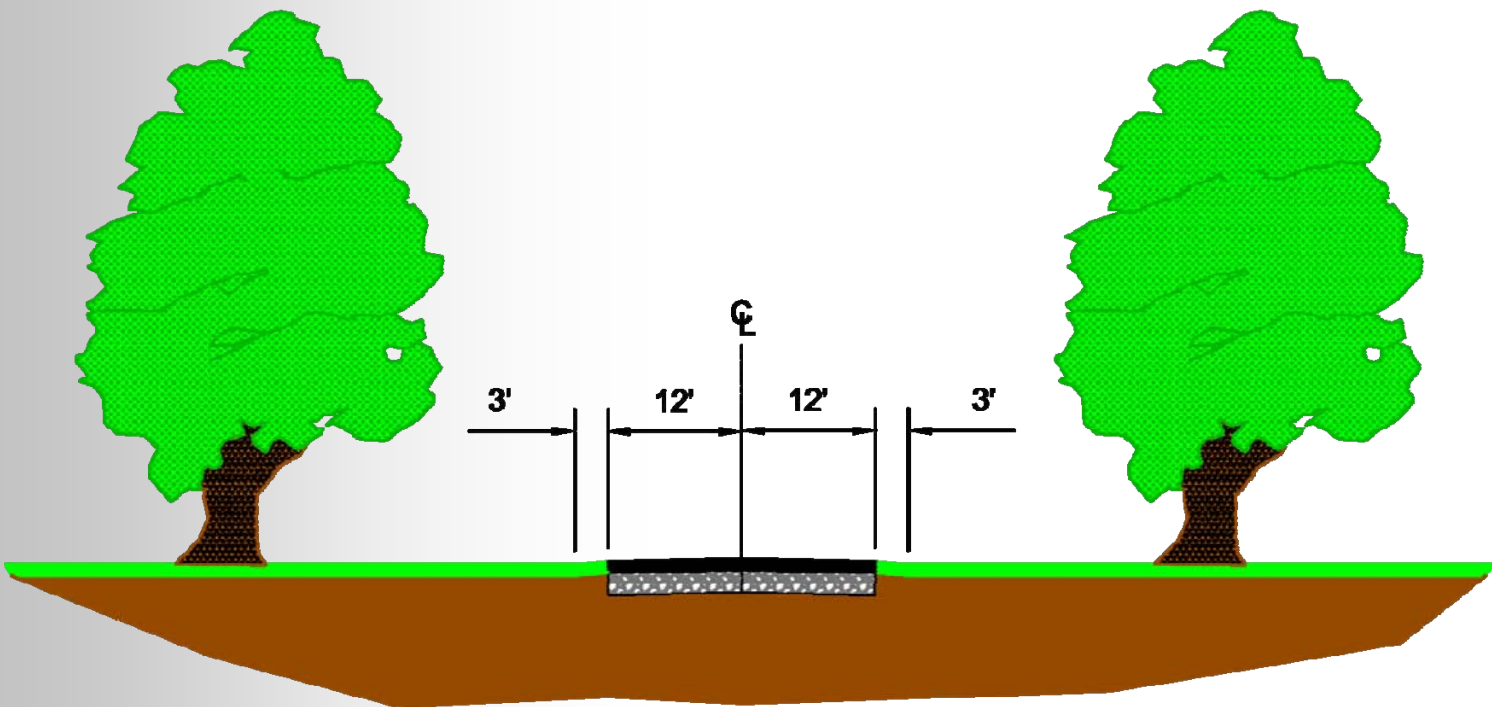
- DHEC rejected Berkeley Hall case request against County's permit
- Plans have Development Review Team final approval

## Planned Activities for Next Period

- Right-of-Way acquisition by the County
- Obtain USACE permit
- County attorney is responding to Berkeley Hall legal challenge



Project Location



Project Typical Cross-section

# 2d. US 278 Frontage Roads: Rose Hill

**PROJECT  
COMPLETE**



## Project Description

The Rose Hill Frontage Road will help residents of the Rose Hill private community gain access to the Rose Hill shopping center without having to utilize US 278, thus relieving traffic on the main artery. The frontage road will connect Club Gate Drive to the rear entrance of the Publix parking lot. This frontage road will be a two-lane road, each lane will be 11 feet wide with curbs.

## Project Personnel

**Design Firm:** Florence & Hutcheson, Inc.

**Project Manager:** David Beaty, Florence & Hutcheson, Inc.

## Project Status

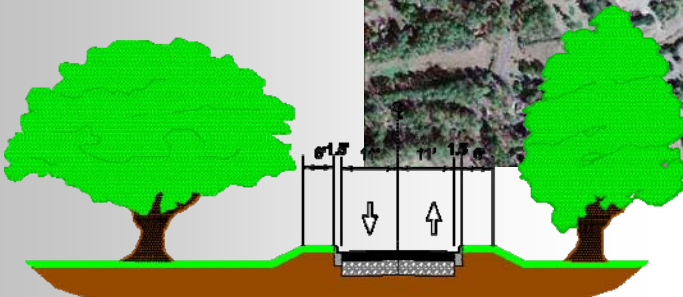
Rose Hill property owners rejected the project; 84% voted against it effective January 6, 2009. The project may still be reviewed in context with proposed US 278 improvements.

## Contract Cost & Schedule Status

	Design	Right-of-Way	Utilities Relocation
<b>Commencement Date:</b>	27-May-2008		
<b>Scheduled Completion:</b>	6-Jan-2009		
<b>Original Budget:</b>	\$25,930		
<b>Current Budget:</b>	\$24,810		
<b>Expenditures to Date:</b>	\$24,810		
<b>Percent Budget Spent:</b>	100%		



Project Location



Project Typical Cross-section





## Project Description

The Plantation Business Park Frontage Road will connect Westbury Parkway East to Simmonsville Road going through Plantation Park Drive and connecting at the two roundabouts on both sides. This will give all businesses in Plantation Business Park who currently only have access to US 278 at one opening, the ability to enter and exit at Westbury Parkway and at Simmonsville Road. The median outside the current entrance of Plantation Business Park is scheduled to be closed by SCDOT. This frontage road will be a two-lane road. Each lane will be 11 feet wide with 6-foot wide shoulders on both sides.

## Project Personnel

**Design Firm:** Florence & Hutcheson, Inc.

**Project Manager:** David Beaty, Florence & Hutcheson, Inc.

## Local Company Involvement

None to date

## Project Status

Construction bid documents were prepared and advertised.

## Contract Cost & Schedule Status

	Design	Right-of-Way	Utilities Relocation
<b>Commencement Date:</b>	27-May-2008	29-Sep-2008	N/A
<b>Scheduled Completion:</b>	22-Jan-2009	19-Jun-2009	
<b>Original Budget:</b>	\$41,000	\$742,801	
<b>Current Budget:</b>	\$39,379	\$746,000	
<b>Expenditures to Date:</b>	\$39,379	\$256,100	
<b>Percent Budget Spent:</b>	100%	34%	

	Construction	CEI
<b>Commencement Date:</b>	3-May-2010	County Managed
<b>Scheduled Completion:</b>	30-Oct-2010	
<b>Original Budget:</b>	\$869,400	
<b>Current Budget:</b>	\$1,027,000	
<b>Expenditures to Date:</b>	\$0	
<b>Percent Budget Spent:</b>	0%	

## Potential Issues

- None at this time

## Activities Since Last Period

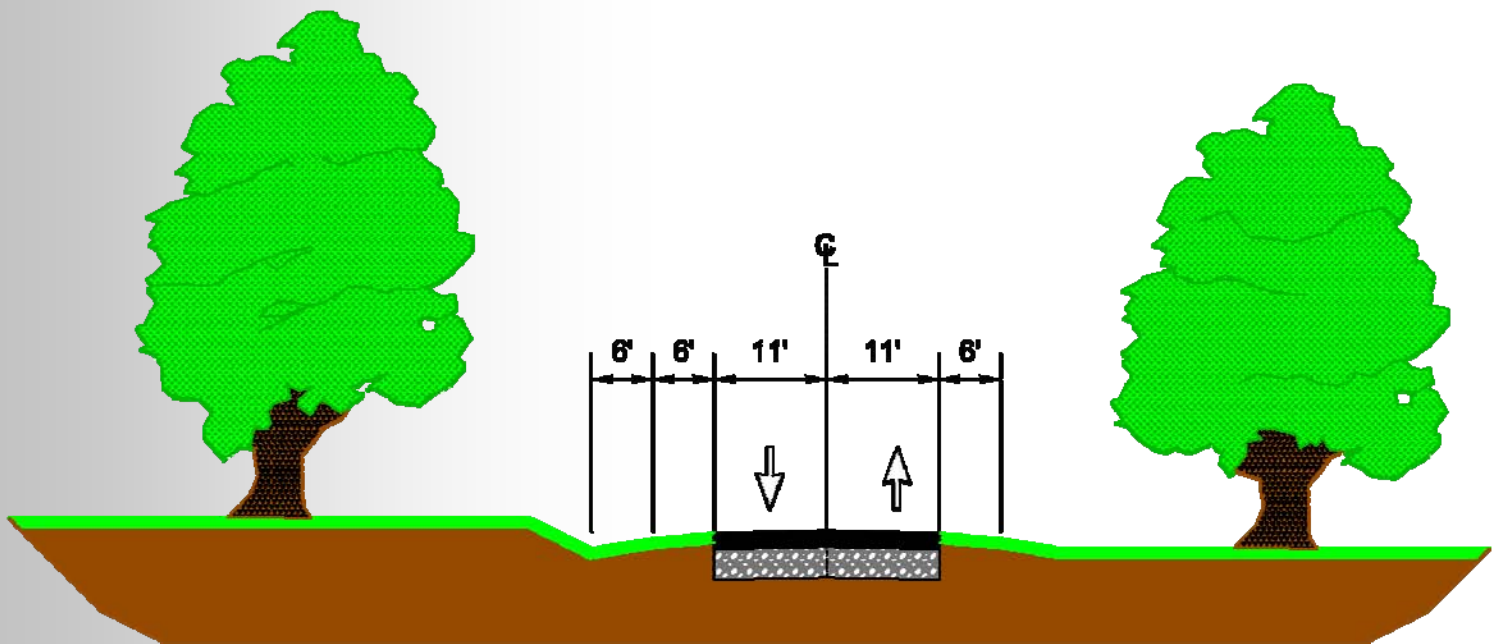
- Right-of-Way acquisition is continuing
- Adjusted design to include SCDHEC-OCRM comments and SCDOT comments
- Advertised for construction bids

## Planned Activities for Next Period

- Complete Right-of-Way acquisition
- Receive construction bids
- **Next Milestone:** Issue construction notice to proceed



Project Location

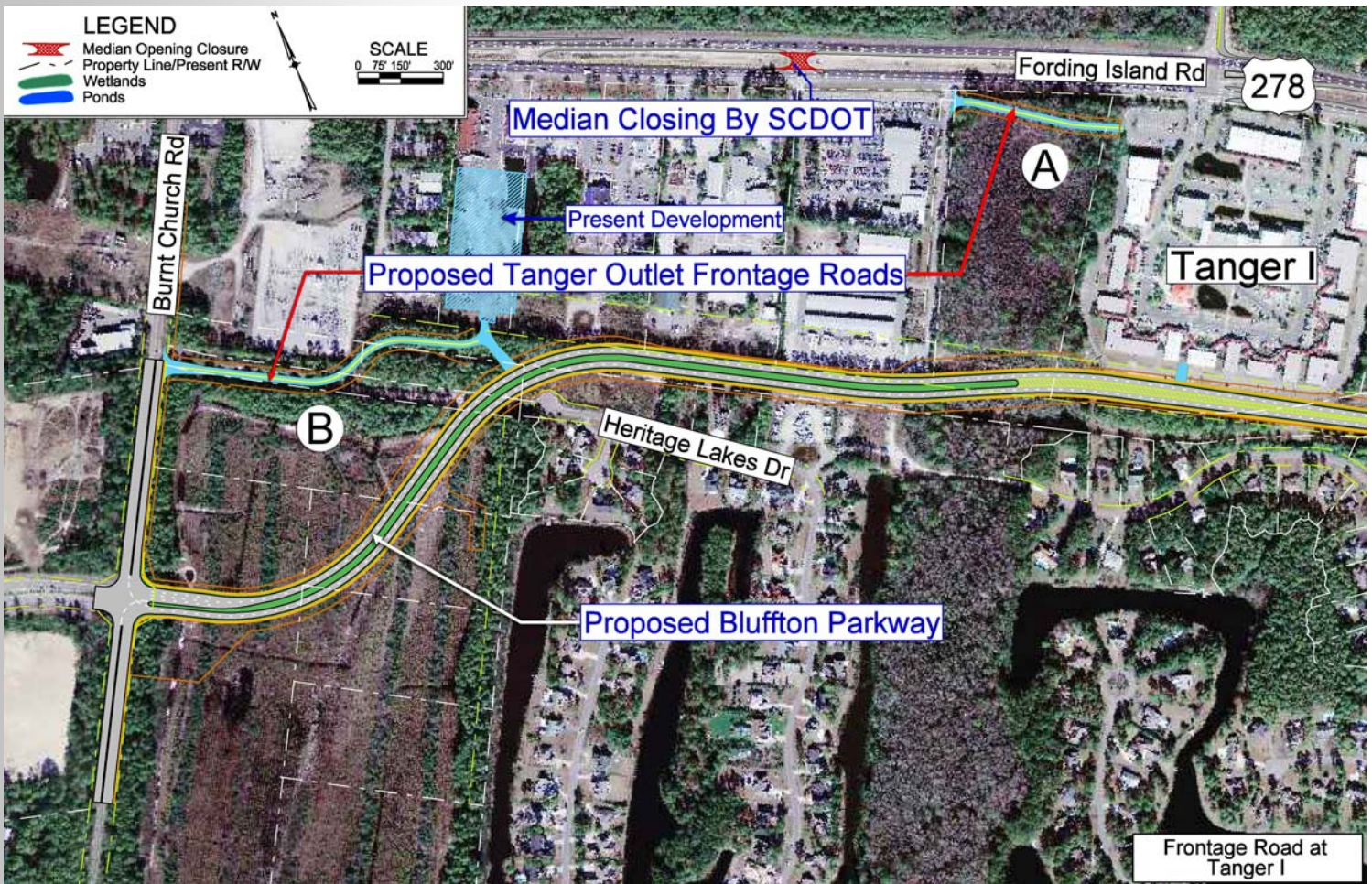


# 2d. US 278 Frontage Roads: Tanger 1 Outlet



## Project Description

The Tanger 1 Outlet Frontage Roads will connect Burnt Church Road to the shopping center north of Heritage Lakes then continue east from the new BMW dealership to the Tanger 1 Outlet Center. This will relieve traffic on US 278. The median north of the new BMW dealership is scheduled to be closed by SCDOT. These frontage roads will be two-lane with 11-foot wide lanes and 6-foot wide shoulders.



Project Location

## Project Personnel

Design Firm: Florence & Hutcheson, Inc.

Project Manager: David Beaty, Florence & Hutcheson, Inc.

## Local Company Involvement

None to date

## Project Status

Redesign complete. Property being acquired.

## Contract Cost & Schedule Status

	Design	Right-of-Way	Utilities Relocation
Commencement Date:	27-May-2008	29-Sep-2008	No Prior Rights
Scheduled Completion:	5-Nov-2008	30-Jun-2009	
Original Budget:	\$26,820	\$110,580	
Current Budget:	\$41,114	\$100,000	
Expenditures to Date:	\$40,927	\$30,700	
Percent Budget Spent:	100%	31%	

	Construction	CEI
Commencement Date:	TBD	TBD
Scheduled Completion:	TBD	
Original Budget:	\$723,400	
Current Budget:	\$672,000	
Expenditures to Date:	\$0	
Percent Budget Spent:	0%	

## Potential Issues

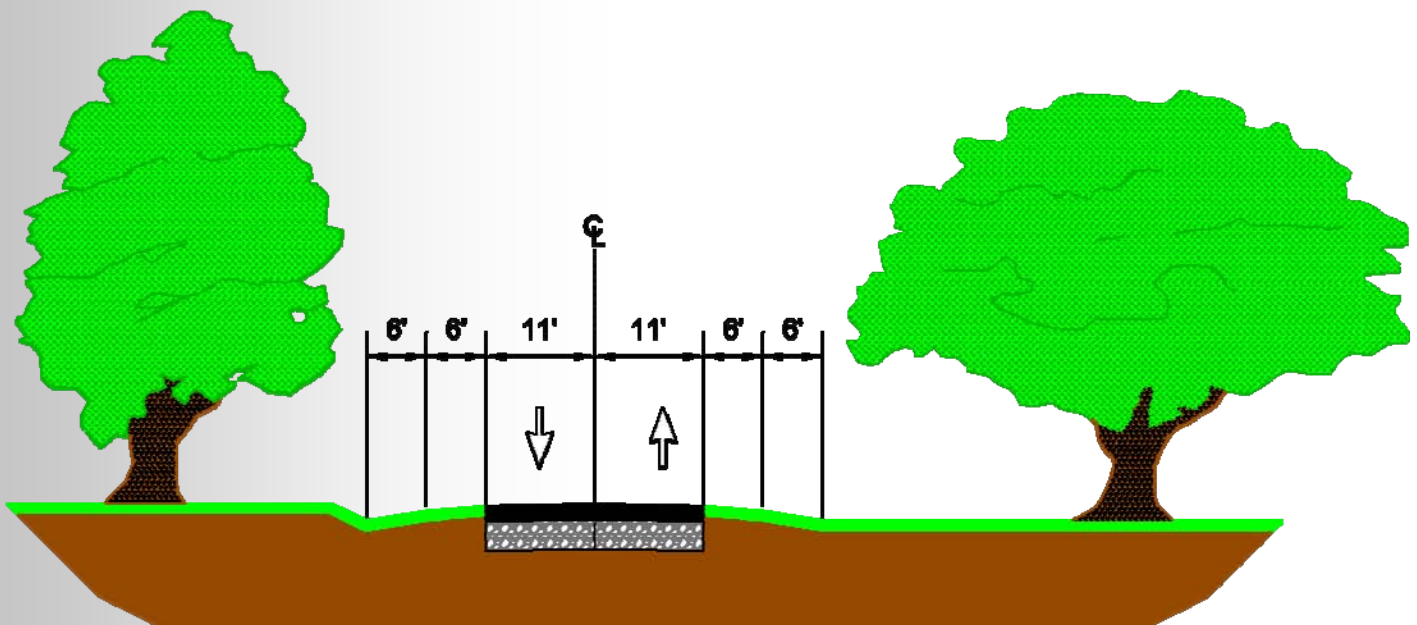
- None at this time

## Activities Since Last Period

- Right-of-Way acquisition continuing
- USACE has issued jurisdictional determination
- Environmental permitting complete

## Planned Activities for Next Period

- **Next Milestone:** Segment A Frontage Road: Complete Right-of-Way acquisition  
Segment B Frontage Road: Begin Right-of-Way acquisition



Project Typical Cross-section

## Project Description

Tanger Interconnectivity Frontage Road will connect Commercial Place to two neighboring shopping centers relieving traffic from US 278. This frontage road will be a two-lane road and each lane will be 10 feet wide.



Project Location

## Project Personnel

Design Firm: Florence & Hutcheson, Inc.

Project Manager: Florence & Hutcheson, Inc.

## Local Company Involvement

None to date

## Project Status

Design is incorporated into the Tanger I Outlet frontage road project. Right-of-Way property is being acquired.

## Contract Cost & Schedule Status

	Design	Right-of-Way	Utilities Relocation
<b>Commencement Date:</b>	27-May-2008	29-Sep-2008	N/A
<b>Scheduled Completion:</b>	5-Nov-2008	30-Jun-2009	
<b>Original Budget:</b>	TBD	TBD	
<b>Current Budget:</b>	\$0	\$0	
<b>Expenditures to Date:</b>	\$0	\$0	
<b>Percent Budget Spent:</b>	0%	0%	

	Construction	CEI
<b>Commencement Date:</b>	TBD	TBD
<b>Scheduled Completion:</b>		
<b>Original Budget:</b>		
<b>Current Budget:</b>		
<b>Expenditures to Date:</b>		
<b>Percent Budget Spent:</b>		

## Potential Issues

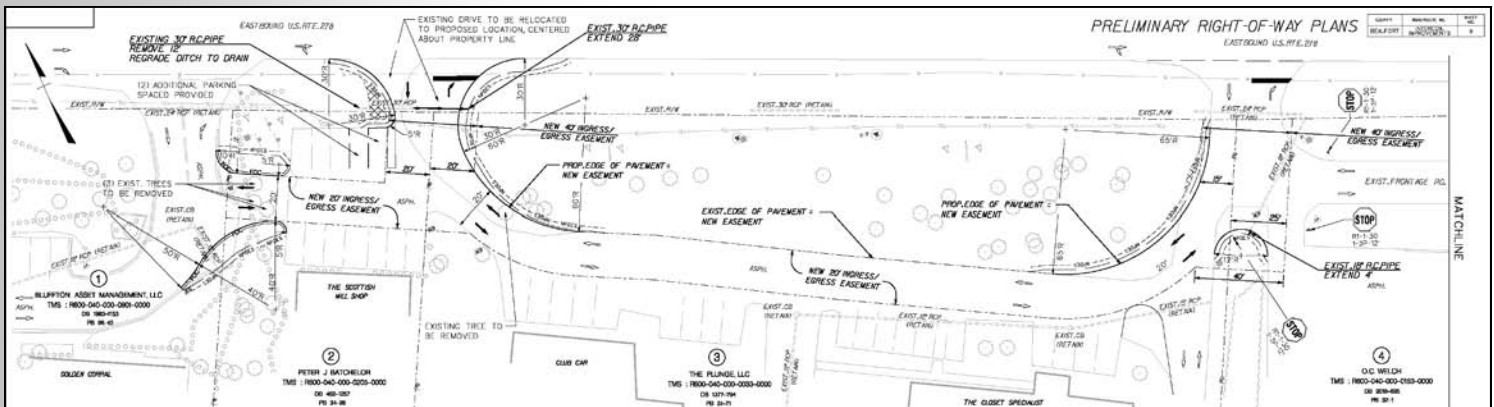
- None at this time

## Activities Since Last Period

- Begin Right-of-Way acquisition

## Planned Activities for Next Period

- **Next Milestone:** Complete Right-of-Way acquisition



**Proposed Project Plan**

# 2d. US 278 Frontage Roads: The Gatherings



## Project Description

The Gatherings Frontage Road will connect Buckingham Plantation Drive East to Salt Marsh Drive, relieving traffic from US 278. The median on US 278 at Salt Marsh Drive intersection is scheduled to be closed by SCDOT. This frontage road will be a two-lane road. Each lane will be 12 feet wide and constructed along the edge of an existing parking lot.



Project Location

## Project Personnel

**Design Firm:** Florence & Hutcheson, Inc.

**Project Manager:** David Beaty, Florence & Hutcheson, Inc.

## Local Company Involvement

Company	Location	Responsibilities	Paid to Date
Malphrus Construction Company, Inc.	Hilton Head Island	Construction	Ongoing
Andrews and Burgess, Inc.	Beaufort	Conceptual Plans Design	Ongoing

## Project Status

Property owner hired a local, private engineering firm, Andrews & Burgess, Inc., to develop conceptual plans. These plans have Development Review Team (DRT) final approval. Malphrus Construction is close to completing construction.

## Contract Cost & Schedule Status

	Design	Right-of-Way	Utilities Relocation
Commencement Date:	27-May-2008	9-Nov-2009	N/A
Scheduled Completion:	5-Nov-2008	16-Feb-2010	
Original Budget:	\$23,211	\$20,000	
Current Budget:	\$24,481	\$0	
Expenditures to Date:	Designed by Others	\$0	
Percent Budget Spent:	0%	0%	

	Construction	CEI
Commencement Date:	9-Sep-2009	County Managed
Scheduled Completion:	TBD	
Original Budget:	\$400,000	
Current Budget:	\$388,000	
Expenditures to Date:	\$0	
Percent Budget Spent:	0%	

## Potential Issues

- None at this time

## Activities Since Last Period

- Construction

## Planned Activities for Next Period

- **Next Milestone:** Construction completion



Paving Operations on New Frontage Road



Completed Paving for New Frontage Road



# 2e. US 278 (Fording Island Road) Street Lighting



## Project Description

This project provided metal-halide lighting or LEDs (light-emitting diodes) at major intersections of US 278 (Fording Island Road) between SC 170 (Okatie Highway) and the Hilton Head Island bridges on existing signal poles. These lights were mounted on existing Beaufort County poles.

**Sales Tax Funding:** \$100,000  
**Total Project Funding:** \$100,000

**PROJECT COMPLETE**



New Street Light Fixtures at the US 278 / Burnt Church Rd. Intersection



Newly Installed Street Light Fixture

## Project Personnel

<b>Design Firm:</b> Beaufort County	<b>Project Manager:</b> Colin Kinton, Beaufort County
	<b>Electrical Consultant:</b> Joe Scruggs, Scruggs Electrical Consultants

## Project Status

Project is complete.

## Contract Cost & Schedule Status

	Design	Construction	CEI
<b>Commencement Date:</b>	3-Mar-2008	14-Sep-2009	County Managed
<b>Scheduled Completion:</b>	26-Jun-2008	TBD	
<b>Original Budget:</b>	\$6,000	\$94,000	
<b>Current Budget:</b>	\$6,000	\$94,317	
<b>Expenditures to Date:</b>	\$6,000	\$75,784	
<b>Percent Budget Spent:</b>	100%	80%	

### 3. SC 170 Widening: SC 46 (May River Rd.) to Tide Watch Dr.



#### Project Description

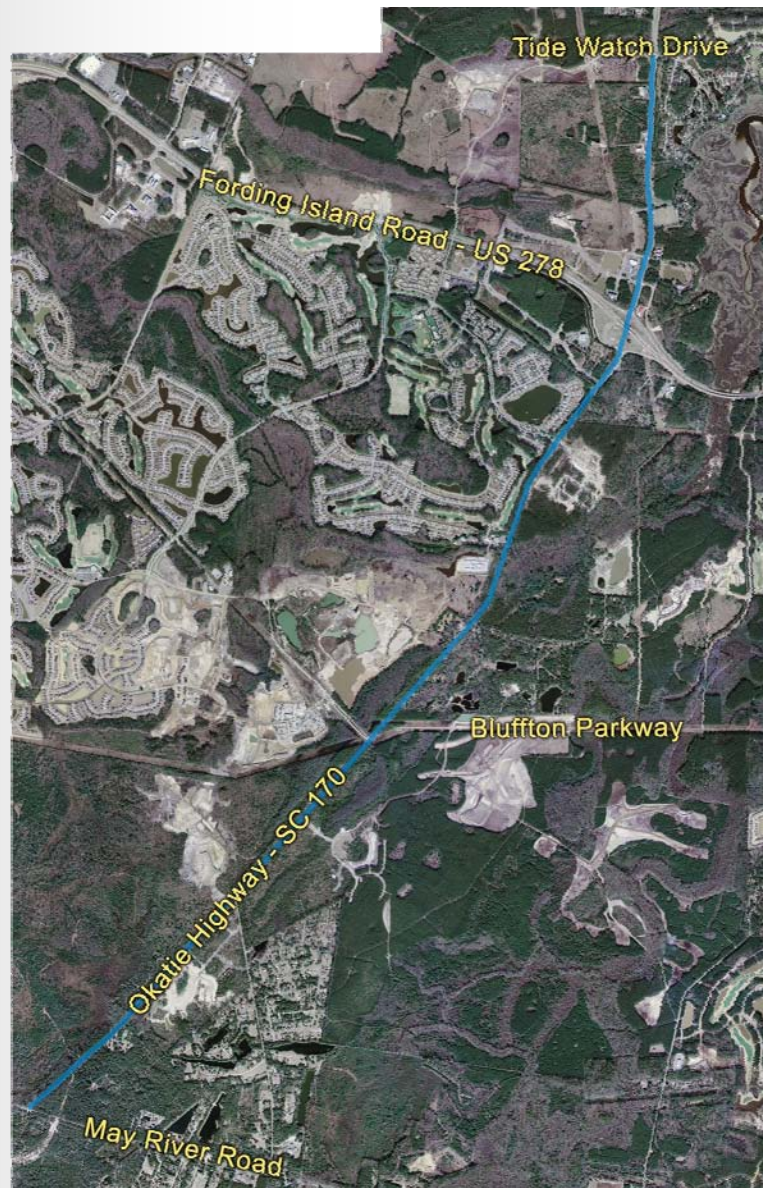
This project widens SC 170, 5.9 miles from the roundabout at SC 46 to the existing traffic signal at Riverbend (Tide Watch Drive), about one mile north of US 278. This involves widening the road to a four-lane divided highway with turn lanes south of US 278 and to a six-lane divided roadway north of US 278. This is needed to accommodate traffic demands within this corridor. It includes installation of additional traffic signals on a warranted basis. The divided highway addresses current safety concerns, reduces the need to remove grand oak trees, and includes separated multi-use pathways for cyclists and pedestrians.

**Sales Tax Funding:** \$6,000,000

**Impact Fee Funding:** \$20,000,000

**State Infrastructure Bank Grant (Requested):** \$16,295,482

**Total Project Funding:** \$42,295,482



Project Location

## Project Personnel

**Design Firm:** Thomas & Hutton Engineering Company

**Project Manager:** Doyle Kelley, Thomas & Hutton Engineering Company

## Local Company Involvement

None to date

## Project Status

The project may be divided into three phases to accommodate faster Right-of-Way acquisition and to accelerate construction. Tentatively, 1) US 278 to Bluffton Parkway, 2) Bluffton Parkway to SC 46, and 3) US 278 to Tide Watch Drive.

## Contract Cost & Schedule Status

	Design	Right-of-Way	Utilities Relocation
<b>Commencement Date:</b>	1-May-2007	1-Apr-2010	TBD
<b>Scheduled Completion:</b>	30-Jun-2009	30-Mar-2011	
<b>Original Budget:</b>	\$1,500,000	\$3,000,000	
<b>Current Budget:</b>	\$1,508,005	\$8,461,046	
<b>Expenditures to Date:</b>	\$1,091,530	\$0	
<b>Percent Budget Spent:</b>	72%	0%	

	Construction	CEI
<b>Commencement Date:</b>	5-Jul-2011	TBD
<b>Scheduled Completion:</b>	31-Dec-2012	
<b>Original Budget:</b>	\$21,500,000	
<b>Current Budget:</b>	\$24,694,000	
<b>Expenditures to Date:</b>	\$0	
<b>Percent Budget Spent:</b>	0%	

## Potential Issues

- Funding
- County waiting until all committed Right-of-Way from development agreements has been acquired by Town of Bluffton before beginning further acquisition
- Town of Bluffton is requesting major design changes, possibly including new roundabouts
- Town of Bluffton is requesting SCDOT to lower the speed limit on SC 170 to 35 MPH

## Activities Since Last Period

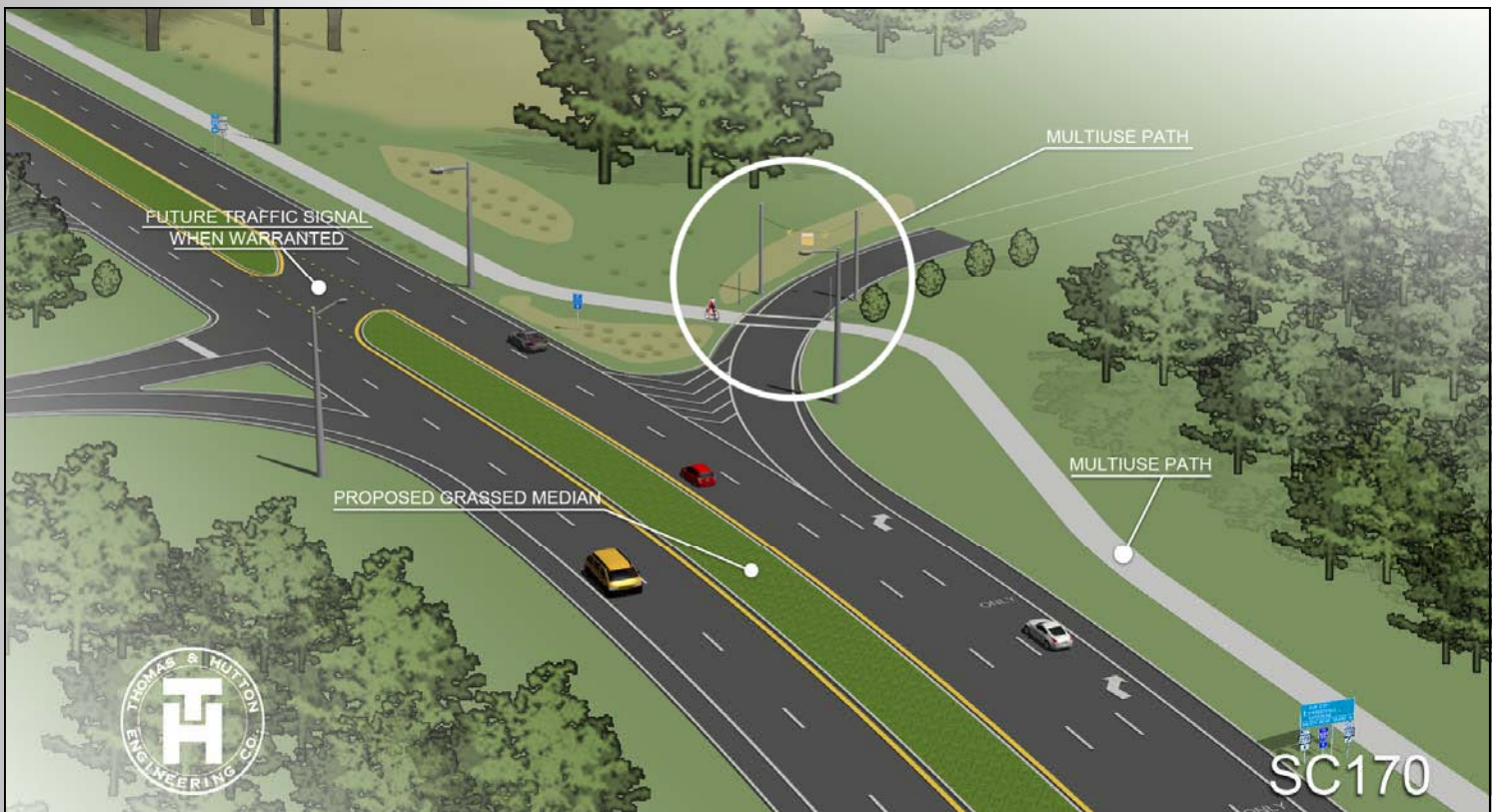
- Continued coordination with Town of Bluffton on Right-of-Way donations from development agreements
- Met with SCDOT to resolve final plans issues
- Continued utility coordination

## Planned Activities for Next Period

- Address SCDOT comments
- Review Town of Bluffton's request for design changes associated with additional pedestrian accommodations
- **Next Milestone:** Right-of-Way acquisition



Rendering of Proposed Project Design



Rendering of Proposed Project Design

# 4. US 17 Widening: US 21 (Charleston Hwy.) to Combahee River



## Project Description

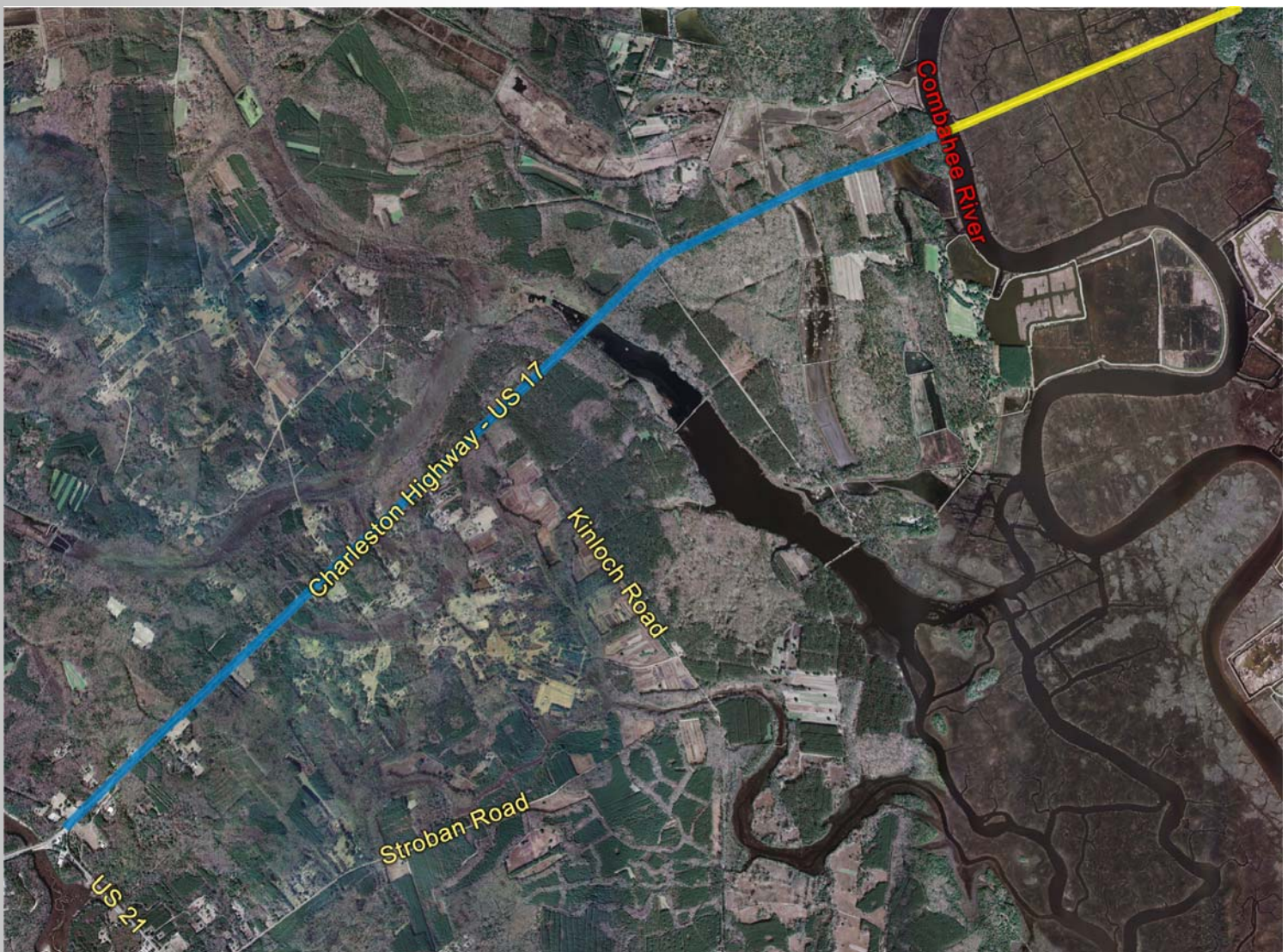
This project widens the segment of US 17 in northern Beaufort County from Gardens Corner northward to Combahee River to a four-lane divided highway, addressing well-publicized safety concerns. Construction includes separated multi-use pathways for bicyclists and pedestrians. Project extends 1.7 miles into Colleton County. SCDOT is managing all aspects of this project.

**Sales Tax Funding:** \$5,000,000

**Impact Fee Funding:** \$2,000,000

**SCDOT and Federal Funding:** \$93,471,305

**Total Project Funding:** \$100,471,305



Project Location

## Project Personnel

**Design/ Build Firm:** Phillips & Jordan, Inc.

**Project Manager:** Dan McInnis, Phillips & Jordan, Inc.

## Local Company Involvement

Company	Location	Responsibilities	Paid to Date
Low Country Concrete	Beaufort	Concrete Materials	\$301,000
Oliver's Bush-Hogging	Beaufort	Clearing and Grubbing	\$310,000

## Project Status

Gardens Corner detour opened for traffic. Crews are relocating utilities. Beaufort County's funding commitments to SCDOT have been paid in full.

## Contract Cost & Schedule Status

	Design	Right-of-Way	Utilities Relocation
Commencement Date:	1-Mar-2007	1-Mar-2007	Included with ROW
Scheduled Completion:	20-Sep-2010	31-Dec-2008	
Original Budget:	\$7,000,000	\$3,600,000	
Current Budget:	\$8,915,875	\$4,684,125	
Expenditures to Date:	\$7,000,000	\$4,684,125	
Percent Budget Spent:	79%	100%	

	Construction	CEI
Commencement Date:	1-Mar-2007	SCDOT Managed
Scheduled Completion:	20-Sep-2010	
Original Budget:	\$66,783,000	
Current Budget:	\$86,871,305	
Expenditures to Date:	\$50,473,167	
Percent Budget Spent:	58%	

## Potential Issues

- None at this time

## Activities Since Last Period

- Traffic Signals have been installed at Gardens Corner
- Gardens Corner permanent intersection work ongoing
- Shifted traffic onto new sections
- Colleton County Causeway fill ongoing

## Planned Activities for Next Period

- Build embankments



Building up Embankment for the US 21 / US 17 tie-in



Building up the Embankment at Gardens Corner Intersection



Looking South on US 21 from Gardens Corner Intersection

# 5. US 21 (Boundary St.) Improvements: Neil Rd. to Palmetto St.



## Project Description

The planned improvements are to increase capacity, improve intersection design, and related improvements to Boundary Street corridor from SC 170 eastward to the Boundary Street / Ribaut Road intersection. The project includes a separated multi-use pathway to serve bicyclists and pedestrians on the south side of street as well as landscaped medians and streetscaping. The Parallel Road Project involves construction of a new roadway parallel to Boundary Street on its north side between SC 170 (Robert Smalls Parkway) and Palmetto Street. This provides an alternate route and relieves traffic on the Boundary Street corridor. Sidewalks are included.

### Boundary Street

**Sales Tax Funding:** \$9,500,000

**Impact Fee Funding:** \$3,750,000

**Total Project Funding:** \$13,250,000

### Parallel Road

**Sales Tax Funding:** \$4,200,000

**Impact Fee Funding:** \$4,550,000

**Total Project Funding:** \$8,750,000

## Project Personnel

**Design Firm:** TBD

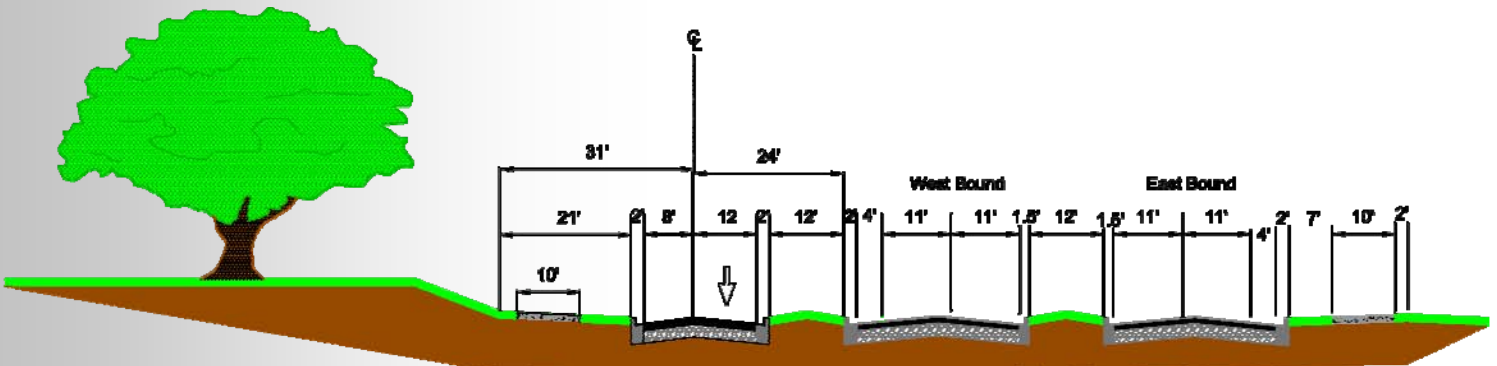
**Project Manager:** TBD

## Local Company Involvement

Company	Location	Responsibilities	Paid to Date
Andrews & Burgess, Inc.	Beaufort	Survey	\$172,112

## Project Status

Final Feasibility Report for Boundary Street submitted to County on April 10, 2009. Final engineering design to commence in Spring, 2010.



Proposed Project Typical Cross-section



## Contract Cost & Schedule Status

	Planning	Design	Right-of-Way
<b>Commencement Date:</b>	19-Nov-2007	1-May-2010	1-May-2011
<b>Scheduled Completion:</b>	6-Apr-2009	30-Apr-2011	30-Nov-2012
<b>Original Budget:</b>	\$1,400,000	\$550,000	\$2,400,000
<b>Current Budget:</b>	\$762,500	\$550,000	\$4,140,000
<b>Expenditures to Date:</b>	\$732,019		\$0
<b>Percent Budget Spent:</b>	96%		0%

	Utilities Relocation	Construction	CEI
<b>Commencement Date:</b>	TBD	1-May-2011	TBD
<b>Scheduled Completion:</b>	TBD	30-Nov-2012	
<b>Original Budget:</b>	\$2,400,000	\$13,300,000	
<b>Current Budget:</b>	\$3,400,000	\$15,286,062	
<b>Expenditures to Date:</b>	\$0	\$0	
<b>Percent Budget Spent:</b>	0%	0%	

### Potential Issues

- None at this time

### Activities Since Last Period

- County/City Inter-Governmental Agreement (IGA) being processed
- Design firm under consideration for final engineering design

### Planned Activities for Next Period

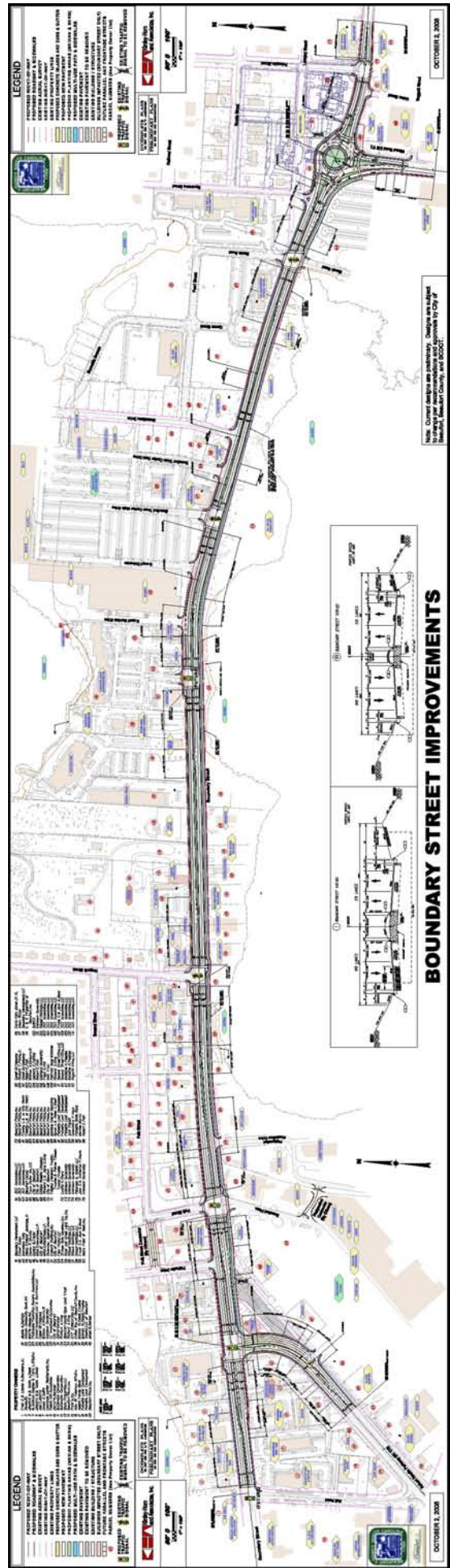
- Issue design consultant notice to proceed
- **Next Milestone:** Final sign-off on County/City Intergovernmental Agreement (IGA)



Existing Boundary Street



Project Location



Project Plans for Boundary Street and Parallel Road Improvements and Additions

# 7. SC 802 (Ribaut Rd.) Intersection Improvements



## Project Description

This project will increase capacity and accomplish three intersection improvements from US 21 (Lady's Island Drive) and the Russell Bell Bridge in Port Royal. The project includes resurfacing, improvements to the existing sidewalks, and related enhancements. Improvements will be made at the Vaigneur Road/ Edinburgh Avenue/ West Paris Avenue intersection, East Paris intersection, and Old Shell Road intersection.

**Sales Tax Funding:** \$600,000

**Impact Fee Funding:** \$1,001,000

**Total Project Funding:** \$1,601,000



Project Location

## Project Personnel

**Design Firm:** Beaufort County

**Project Manager:** Don Smith, Beaufort County

## Local Company Involvement

Company	Location	Responsibilities	Paid to Date
Ward Edwards	Bluffton	Preliminary Survey and Design	\$48,142
REA Construction	Beaufort	Milling, Paving, and Sidewalks	\$772,396 (Amount of work contracted. Full amount will be paid upon completion)

## Project Status

Utility relocations are currently underway.

## Contract Cost & Schedule Status

	Design	Right-of-Way	Utilities Relocation
<b>Commencement Date:</b>	8-Mar-2005	16-Jun-2009	No Prior Rights
<b>Scheduled Completion:</b>	Complete	Complete	
<b>Original Budget:</b>	\$0	\$0	
<b>Current Budget:</b>	\$127,903	\$39,468	
<b>Expenditures to Date:</b>	\$130,243	\$39,468	
<b>Percent Budget Spent:</b>	100%	100%	

	Construction	CEI
<b>Commencement Date:</b>	8-Mar-2009	8-Mar-2009
<b>Scheduled Completion:</b>	TBD	County Managed
<b>Original Budget:</b>	\$600,000	
<b>Current Budget:</b>	\$772,396	
<b>Expenditures to Date:</b>	\$161,361	\$2,966
<b>Percent Budget Spent:</b>	21%	

## Potential Issues

- None at this time

## Activities Since Last Period

- SCE&G power poles relocated

## Planned Activities for Next Period

- Continue with construction
- **Next Milestone:** Project completion



New Turn Lane and Sidewalk on Edinburgh Avenue



New Turn Lane from SC 802 to West Paris Avenue

# 8. SC 802 / US 21 Widening: Ribaut Rd. to Sea Island Pkwy.



## Project Description

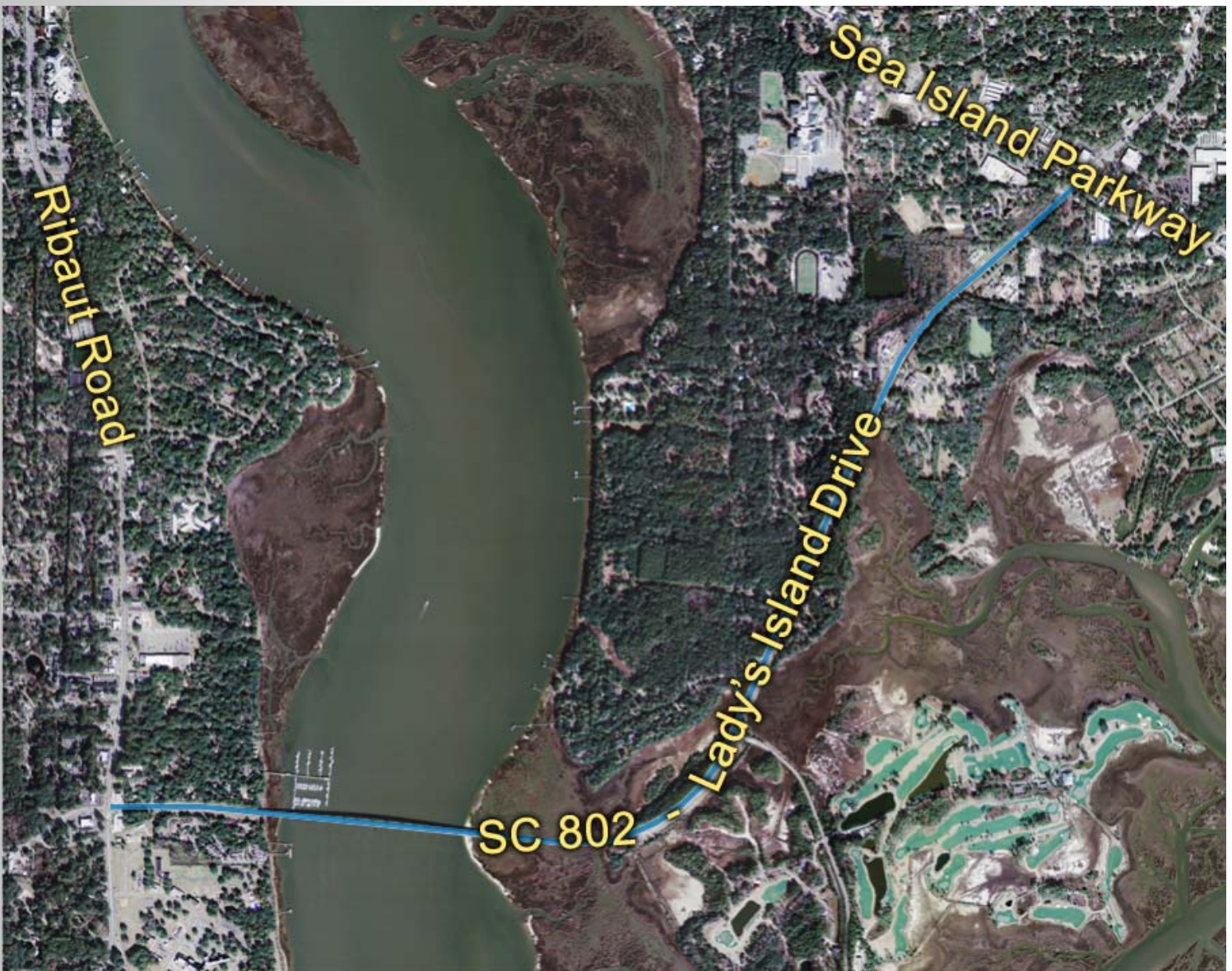
The intent of this project is to widen SC 802 (Lady's Island Drive) from US 21 to Ribaut Road, including design of a new Beaufort River bridge, which will be constructed adjacent to the existing J. E. McTeer Bridge.

**Bridge Original Contract Price:** \$34,573,368

**Road Original Contract Price (project 8 portion):** \$5,407,183

**Sales Tax Funding:** \$35,500,000

**Total Project Funding:** \$35,500,000



Project Location

## Project Personnel

**Design Firm:** Collins Engineers, Inc.

**Project Manager:** Jim O'Connor, Collins Engineers, Inc.

## Local Company and Minority Business Involvement (continued on next page)

Company	Location	Responsibilities	Paid to Date (Quarterly)
Accurate Reproductions	Beaufort	Design Drawing, Plan Copies	\$500
Arrow Concrete Company	Bluffton	Providing Concrete	\$33,800
Blankenship Wayne Construction LLC	Sheldon	Hauling	\$646
Beaufort Auto Electric	Port Royal	Equipment Maintenance	\$1,000
Beaufort Oil Company, Inc.	Beaufort	Equipment Fuel	\$26,000
Beaufort-Jasper Water Sewer Authority	Okatie	Water/ Sewer	\$838
Border Rebar (DBE)	Gastonia, NC	Tying Reinforcing Steel	\$266,851 (contract amount)
Carolina Containers of Beaufort	Beaufort	Port-a-Johns	\$2,000
Days Inn	Beaufort	Accommodations	\$25,000
Doctor's Care of Beaufort	Port Royal	Medical Care	\$2,000
Enterprise Rebar (DBE)	Beaufort	Tying Steel	\$16,000
Ferguson	Bluffton	Industrial Supplies	\$1,500
Gasque and Associates, Inc.	Beaufort	Lady's Island Drive Survey	\$24,000
Graybar Fence Company, Inc.	Burton	Fencing for Laydown Yard	\$1,700
Grainger	Bluffton	Equipment, Tool, Supplies	\$5,000
Grayco True Value Hardware	Beaufort	Construction Supplies	\$11,000
Hiatt & Mason Enterprise (DBE)	Mt. Airy, NC	Place SIP Forms	\$88,887 (contract amount)
Home Depot	Bluffton	Construction Supplies	\$2,200
Howard Johnson Express Inn	Beaufort	Accommodations	\$13,000
Jeffers Construction	Hardeeville	Hauling Stone	\$18,875
J. S. Construction Services, Inc.	Ridgeland	Clearing and Grubbing	\$35,100
Labor Ready (DBE)	Beaufort	Manual Labor	\$5,450
Low Coast Construction, LLC	Beaufort	Site Prep	\$65,000
Low Country Concrete of Ridgeland	Ridgeland	Supplying Concrete to Bridge	\$859,000
Lowe's	Beaufort	Construction Supplies	\$2,562
MC Precast (DBE)	Apex, NC	Sound Barrier Wall	\$365,285 (contract amount)
Murray Sand	Beaufort	Sand, Stone	\$177,050
NAPA	Beaufort	Equipment Vehicle Parts	\$6,000
O.C. Welch Ford-Lincoln Mercury, Inc.	Beaufort	Equipment Maintenance	\$40
Palmetto Equipment Sales and Rentals	Ridgeland	Equipment Rental	\$5,500
Palmetto Medical Group	Bluffton	Medical Care	\$200
Pinckney Well Drilling	Beaufort	Equipment Rental	\$12,000
Port Royal Landing	Port Royal	Lunch and Dinner	\$350
Pro Disposal	Beaufort	Port-a-Johns	\$1,550
Regent Sand and Gravel	Burton	Providing Sand and Stone	\$350

## Local Company and Minority Business Involvement (continued from previous page)

Company	Location	Responsibilities	Paid to Date (Quarterly)
Reynolds Fence and Guardrail (DBE)	North Myrtle Beach	Guardrail	\$25,500 (contract amount)
Sunbelt Rentals	Hilton Head	Heavy Equipment	\$200
Staples	Beaufort	General Office Supplies	\$2,200
Stay Alert Safety Services, Inc. (DBE)	Columbia	Traffic Control Equipment	\$10,700 (contract amount)
Super 8	Port Royal	Accommodations	\$15,000
Tire Kingdom	Beaufort	Equipment Tire Maintenance	\$351
Tuck in the Woods	St. Helena	Campground Rental	\$7,200
The UPS Store	Port Royal	Package Shipping and Supplies	\$250
Wal-Mart	Beaufort	General Supplies	\$375
Watts Barrier Wall (DBE)	Mountville	Bridge Barrier	\$223,708 (contract amount)
Zippy Lube	Beaufort	Vehicle Maintenance	\$120

## Contract Cost & Schedule Status

	Design	Right-of-Way	Utilities Relocation
<b>Commencement Date:</b>	1-May-2007	1-May-2007	No Prior Rights
<b>Scheduled Completion:</b>	Complete	Complete	
<b>Original Budget:</b>	\$2,000,000	\$100,000	
<b>Current Budget:</b>	\$2,082,976	\$95,630	
<b>Expenditures to Date:</b>	\$2,028,256	\$95,630	
<b>Percent Budget Spent:</b>	97%	100%	

	Construction	CEI
<b>Commencement Date:</b>	6-Aug-2009	15-Jun-2009
<b>Scheduled Completion:</b>	6-Aug-2011	28-Feb-2011
<b>Original Budget:</b>	\$33,400,000	\$0
<b>Current Budget:</b>	\$40,239,199	\$1,654,350
<b>Expenditures to Date:</b>	\$7,253,980	\$624,264
<b>Percent Budget Spent:</b>	18%	38%

## Potential Issues

- Utility relocation



## Activities Since Last Period

### Sanders Brothers:

- Began pouring sidewalks

### United:

- Began drilling and pouring shafts on the east side of the bridge
- Piles completed on the east side
- Trestle installation completed

## Planned Activities for Next Period

### Sanders Brothers:

- Continue pouring curb, gutter, and sidewalks
- Continue installing storm drain
- Continue filling areas onsite with borrow material

### United:

- Install bike railing
- Continue drilling and pouring shafts on the east side of the bridge
- Continue cap pours
- Continue pouring bridge decking
- Continue driving pile at bents

**Next Milestone:** Continue construction

**SC 802 / US 21 Roadway Widening — Ribaut Rd. to Sea Island Pkwy.**



**Placing Sidewalk on Lady's Island Drive**



**Finished Sidewalk on Lady's Island Drive**



**Drilled Shaft Crew Placing Rebar Cages on the West End of the New SC 802 Bridge**



**First Drilled Shafts on the East End of the New Bridge**



**Pedestrian Walkway on the East End of the New SC 802 Bridge**

# 9. Northern Beaufort Bypass: Grays Hill to Brickyard Point Rd.

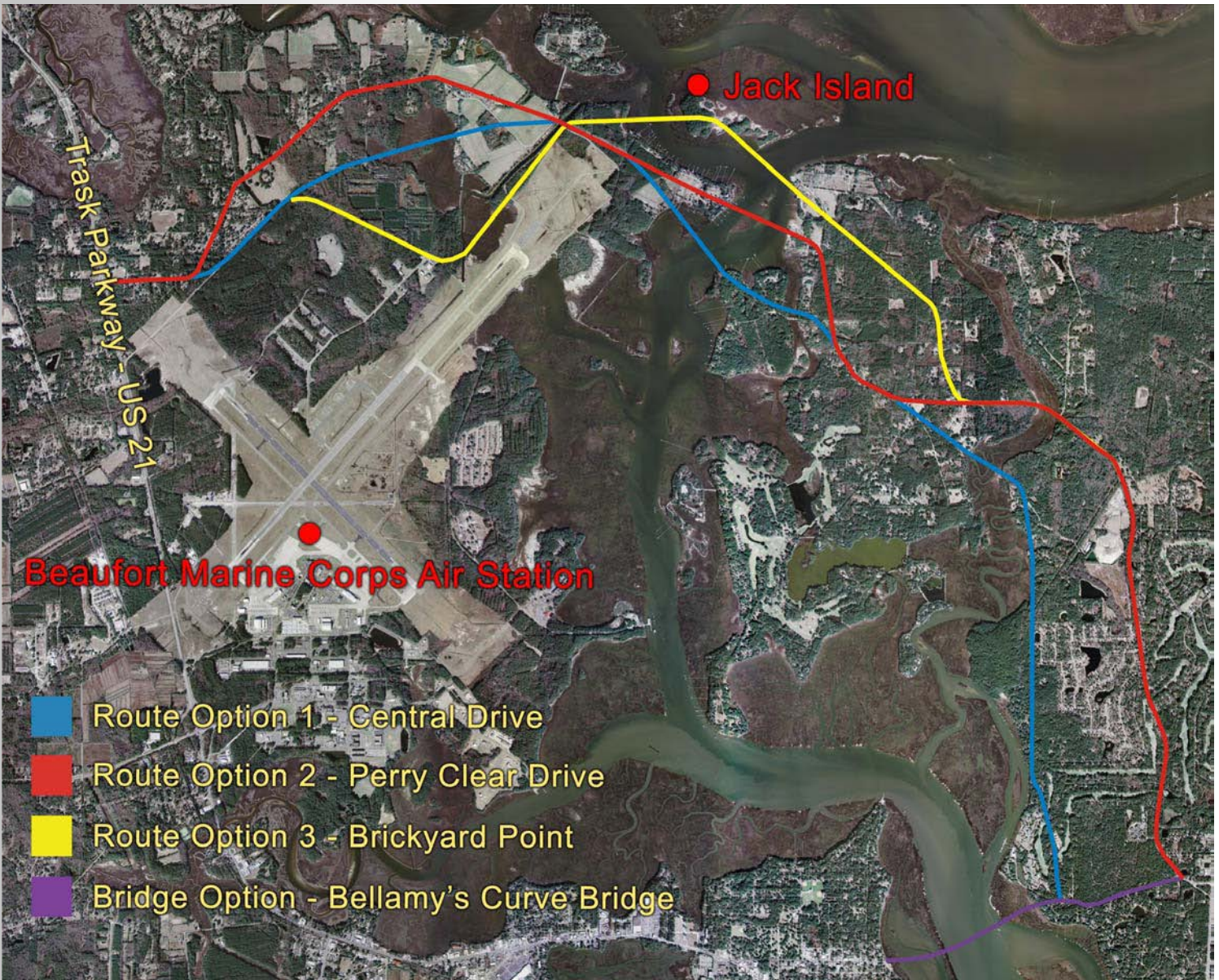


## Project Description

This project funds a corridor feasibility study to identify potential alignments for a future road to connect US 21 in the Grays Hill area with northern Lady's Island, creating a bypass route around the City of Beaufort for US 21 motorists.

**Sales Tax Funding:** \$6,000,000

**Total Project Funding:** \$6,000,000



Proposed Alignments

## Project Personnel

**Design Firm:** Thomas & Hutton Engineering Company

**Project Manager:** Doyle Kelley, Thomas & Hutton Engineering Company

## Local Company Involvement

None to date

## Contract Cost & Schedule Status

	Design	Right-of-Way	Utilities Relocation
Commencement Date:	5-May-2008	N/A	N/A
Scheduled Completion:	28-May-2010		
Original Budget:	\$6,000,000		
Current Budget:	\$1,105,000		
Expenditures to Date:	\$316,088		
Percent Budget Spent:	29%		

	Construction	CEI
Commencement Date:	N/A	N/A
Scheduled Completion:		
Original Budget:		
Current Budget:		
Expenditures to Date:		
Percent Budget Spent:		

## Project Status

Results of final feasibility study determined there would be no cost benefit to any of the three Northern Bypass options. The City of Beaufort has rejected the Bellamy's Curve bridge option and requested further development of one of the Northern Bypass options.

## Potential Issues

- None at this time

## Activities Since Last Period

- Final Feasibility Study submitted to County Council on October 16, 2009

## Planned Activities for Next Period

- Feasibility Study presentation to County Council, date to be determined
- **Next Milestone:** City of Beaufort has requested further development of their preferred route (not including Bellamy's Curve option)

# 10. SC 802 (Savannah Hwy.) Widening: SC 170 to Parris Island Gtwy.



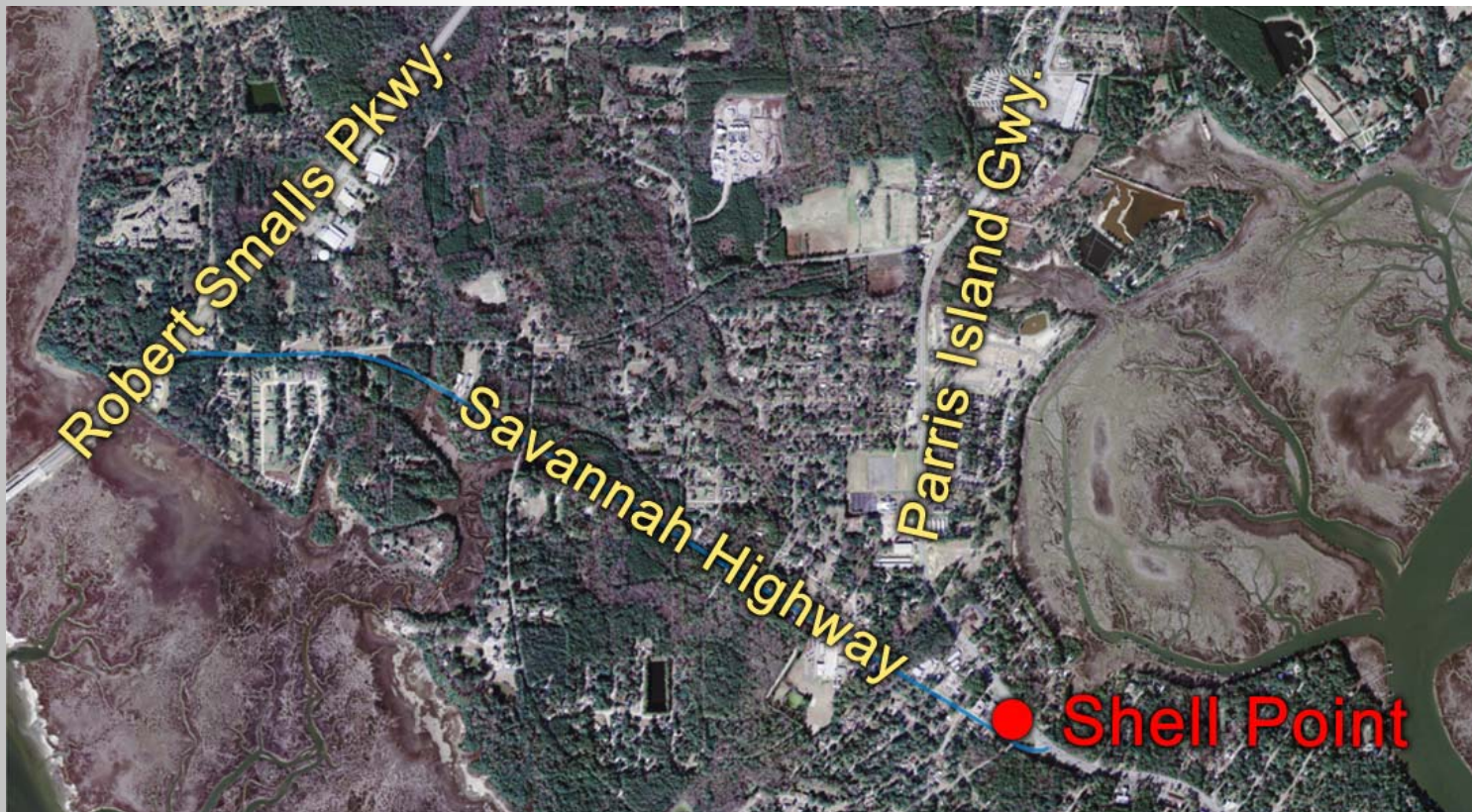
## Project Description

This project will widen SC 802 (Savannah Highway) from SC 280 to SC 170, including five foot sidewalks.

**Roadway Original Contract Price (project 10 portion):** \$5,470,549

**Sales Tax Funding:** \$7,200,000

**Total Project Funding:** \$7,200,000



Project Location

## Project Personnel

**Design Firm:** Collins Engineers, Inc.

**Project Manager:** Jim O'Connor, Collins Engineers, Inc.

## Local Company and Minority Business Involvement (continued on next page)

Company	Location	Responsibilities	Paid to Date (Quarterly)
Arrow Concrete Company	Bluffton	Providing Concrete	\$7,500
Beaufort-Jasper Water Sewer Authority	Okatie	Water/ Sewer	\$837
Blankenship Wayne Construction, LLC	Sheldon	Hauling	\$646
Ferguson	Bluffton	Industrial Supplies	\$1,500
Gasque and Associates	Beaufort	Savannah Highway Survey	\$5,100

## Local Company and Minority Business Involvement (continued from previous page)

Company	Location	Responsibilities	Paid to Date (Quarterly)
Jeffers Construction	Hardeeville	Hauling Stone	\$2,575
J. S. Construction Services, Inc.	Ridgeland	Clearing and Grubbing	\$35,100
Labor Ready (DBE)	Beaufort	Manual Labor	\$5,450
Lowes	Beaufort	Construction Supplies	\$63
Murray Sand	Beaufort	Sand, Stone	\$176,250
Palmetto Medical Group	Bluffton	Medical Care	\$200
Pro Disposal	Beaufort	Port-a-Johns	\$1,550
Regent Sand and Gravel	Burton	Providing Stone	\$350
Reynolds Fence and Guardrail (DBE)	North Myrtle Beach	Guardrail	\$25,500 (contract amount)
Stay Alert Safety Services, Inc. (DBE)	Columbia	Traffic Control Equipment	\$10,700 (contract amount)
Tire Kingdom	Beaufort	Equipment Tire Maintenance	\$325
Wal-Mart	Beaufort	General Supplies	\$25

## Contract Cost & Schedule Status

	Design	Right-of-Way	Utilities Relocation
<b>Commencement Date:</b>	1-May-2007	1-May-2007	No Prior Rights
<b>Scheduled Completion:</b>	Complete	Complete	
<b>Original Budget:</b>	\$1,000,000	\$100,000	
<b>Current Budget:</b>	\$973,404	\$70,650	
<b>Expenditures to Date:</b>	\$898,911	\$70,650	
<b>Percent Budget Spent:</b>	92%	100%	

	Construction	CEI
<b>Commencement Date:</b>	13-Aug-2009	15-Jun-09
<b>Scheduled Completion:</b>	26-Dec-2010	26-Feb-11
<b>Original Budget:</b>	\$6,100,000	\$0
<b>Current Budget:</b>	\$5,846,972	\$827,175
<b>Expenditures to Date:</b>	\$821,015	\$312,132
<b>Percent Budget Spent:</b>	14%	38%

## Potential Issues

- Utility relocation

## Activities Since Last Period

- Began pouring sidewalks
- Prepared for cross line storm drain installation

## Planned Activities for Next Period

- Erosion control measures continue
- Working with BJWSA on relocation of waterline
- **Next Milestone:** Continue construction



Proposed View of Savannah Highway Looking Northwest at Shell Point Road



Utility Relocation Along Savannah Highway



Pipe Crew Installing Storm Drain Lines Along Savannah Highway



# Cost Report Overview



Program Funding

Project	1% Sales Tax	Impact Fees	Confirmed Funding	State Infrastructure Bank (unconfirmed)
<b>Project 1</b>				
Phase 5A	50,000,000			46,033,537
Phase 5B	0	10,000,000		24,033,200
<b>Project 2</b>				
2a	4,700,000		2,210,734	
2b	2,000,000			
2c	17,600,000	7,000,000	12,800,000	
2d	3,600,000	6,000,000	1,100,000	
2e	100,000			
<b>Project 3</b>	6,000,000	20,000,000		16,295,482
<b>Project 4</b>	5,000,000	2,000,000	93,471,305	
<b>Project 5 &amp; 6</b>	13,700,000	8,300,000		
<b>Project 7</b>	600,000	1,001,000		
<b>Project 8</b>	35,500,000			
<b>Project 9</b>	6,000,000			
<b>Project 10</b>	7,200,000			

Current Estimate

Project	Design	ROW	Other	Construction	Total
<b>Project 1</b>					
Phase 5A	2,755,599	12,658,163	9,417,722	47,233,103	<b>72,064,587</b>
Phase 5B	892,208	4,100,000	0	18,569,470	<b>23,561,678</b>
<b>Project 2</b>					
2a	1,000,000	0	283,000	6,328,212	<b>7,611,212</b>
2b	257,297	99,750	394,685	1,251,338	<b>2,003,070</b>
2c	700,000	2,600,000	0	26,000,000	<b>29,300,000</b>
2d	219,866	846,000	0	2,674,457	<b>3,740,323</b>
2e	6,000	0	0	94,317	<b>100,317</b>
<b>Project 3</b>	1,508,005	8,461,046	0	24,694,000	<b>34,663,051</b>
<b>Project 4</b>	8,915,875	4,684,125	0	86,871,305	<b>100,471,305</b>
<b>Project 5 &amp; 6</b>	1,750,000	4,140,000	3,400,000	15,286,062	<b>24,576,062</b>
<b>Project 7</b>	127,903	39,468	0	772,396	<b>939,767</b>
<b>Project 8</b>	2,082,976	95,630	1,654,350	40,239,199	<b>44,072,155</b>
<b>Project 9</b>	1,105,000	0	0	0	<b>1,105,000</b>
<b>Project 10</b>	973,404	70,650	827,175	5,846,972	<b>7,718,201</b>



COUNTY COUNCIL OF BEAUFORT COUNTY  
PURCHASING DEPARTMENT

Building 2, 102 Industrial Village Road  
Post Office Drawer 1228, Beaufort, SC 29901-1228  
Phone: (843) 470-2735 Fax: (843) 470-2738

TO: Councilman Stewart H. Rodman, Chairman, Finance Committee

VIA: Gary Kubic, County Administrator *G. Kubic*  
Bryan Hill, Deputy County Administrator *BH*  
David Starkey, Chief Financial Officer *DS*  
Ted Anderson, Director MIS *Ted Anderson*

Date: January 26, 2010

FROM: Dave Thomas, CPPO, Purchasing Director *DT*

SUBJ: IFB# 1730/100146 Voice Over IP Telephone Services for Beaufort County MIS

**Background:** Beaufort County Government is seeking Bids from qualified companies for Cisco VoIP implementation support services for our MIS department. At a minimum, we are estimating the need of 546 engineering support hours in order to start planning of the use of new SIP Trunking service using the new Nxx dial plan (255 local exchange code). The Cisco VoIP equipment (switches, servers and telephones) have already been purchased and delivered. We have set an aggressive schedule to complete the migration of current Beaufort County departments to the new phone numbers and new Cisco VoIP phones starting in February, 2010. In order to maintain this schedule it is required that we hire an experienced Cisco VoIP system engineering firm to augment our staff resources and help develop the dial plan and start installing our Cisco VoIP software and hardware.

**Bids Received: 2**

- |  |             |                |
|--|-------------|----------------|
| 1. Pomeroy IT Solutions, Columbia, SC      | \$55,520.00 | Non-Responsive |
| 2. Internetwork Engineering, Charlotte, NC | \$93,130 *  |                |

\*Note: Internetwork Engineering's price does include per diem/travel and they are the only firm who met the experience requirements.

**FUNDING:** Services are paid from the 11439-54203 (special capital equipment) account which has a balance of \$120,000.

**RECOMMENDATION:** The Finance Committee approve and recommend to County Council the contract award of \$93,130 to Internetwork Engineering Services for VOIP support services.

cc: Richard Hineine, Elizabeth Smith

**RESOLUTION**

**WHEREAS**, Daufuskie Island is a barrier island to which ingress and egress can only be attained by use of water transportation; and

**WHEREAS**, County Council of Beaufort County and South Carolina Department of Transportation provide funds to assist in the transportation of Daufuskie Island property owners and residents to and from the mainland; and

**WHEREAS**, County Council desires to assist in maintaining opportunities for Island property owners and residents to travel to and from the island in the pursuit of life-sustaining activities, *i.e.*, employment, medical services, clothing, food, etc.; and

**WHEREAS**, use of this service has increased significantly due to the loss of a previous provider, thus making it the primary source of transportation for most of the property owners and residents; and

**WHEREAS**, the County Council of Beaufort County agrees with the need to submit an application to the South Carolina Department of Transportation for a dollar-to-dollar matching grant in the amount of One Hundred Thousand Dollars (\$100,000) for ferry service for property owners and residents of Daufuskie Island.

**NOW, THEREFORE, BE IT RESOLVED**, that the County Council of Beaufort County does hereby agree to apply to the State of South Carolina Department of Transportation for a grant to assist with ferry service to and from Daufuskie Island.

Adopted this 22<sup>nd</sup> day of February, 2010.

COUNTY COUNCIL OF BEAUFORT COUNTY

By: \_\_\_\_\_  
Wm. Weston J. Newton, Chairman

ATTEST:

\_\_\_\_\_  
Clerk to Council

2010 /

AN ORDINANCE OF THE COUNTY OF BEAUFORT, SOUTH CAROLINA, TO AMEND THE ZONING AND DEVELOPMENT STANDARDS ORDINANCE ARTICLE XIII, SECTION 106-2729. STREET DESIGN STANDARDS (TO ESTABLISH CONSTRUCTION STANDARDS FOR UNPAVED ROADS AND TO PERMIT ACCEPTANCE OF UNPAVED ROADS BY THE COUNTY FOR MAINTENANCE OR OWNERSHIP FOR AFFORDABLE HOUSING DEVELOPMENTS WHEN APPROVED BY COUNTY COUNCIL).

Whereas, Standards that are underscored shall be added text and Standards ~~lined through~~ shall be deleted text.

Adopted this \_\_\_\_ day of \_\_\_\_\_, 2010.

COUNTY COUNCIL OF BEAUFORT COUNTY

BY: \_\_\_\_\_  
Wm. Weston J. Newton, Chairman

APPROVED AS TO FORM:

\_\_\_\_\_  
Ladson F. Howell, Staff Attorney

ATTEST:

\_\_\_\_\_  
Suzanne M. Rainey, Clerk to Council

First Reading: February 8, 2010

Second Reading:

Public Hearing:

Third and Final Reading:

(Amending 99/12)

## ARTICLE XIII. SUBDIVISION AND LAND DEVELOPMENT STANDARDS

### DIVISION 2. STREET STANDARDS

#### Sec. 106-2729. Street design standards.

(e) *Minimum construction specifications for, and County acceptance of, unpaved roads.* For the purposes of this article, unpaved road shall not mean dirt road, per se, but shall be referred to as “stabilized aggregate” road. Unpaved roads are to be utilized for residential, low volume traffic usage only. ~~For subdivision of land, low volume traffic shall mean that the highest traffic potential of traffic than can be generated based on the underlying zoning district.~~ All minor subdivisions of land, as long as no more than four lots are served by the proposed road, may utilize a stabilized aggregate, per county standards as follows: 6” of crushed granite or equal as approved by the County Engineer. All major subdivisions shall require paved roads, per county standards. Unpaved roads shall remain private roads and not be accepted by the county for maintenance or ownership unless specifically approved by County Council for an affordable housing development as defined in Sec. 106-2081(3)(a).

**PUBLIC NOTICE**  
**Beaufort County Community Development Block Grant**  
**Public Hearing**  
**Concerning Needs Assessment**

**NOTICE IS HEREBY GIVEN THAT**, on Monday, February 22, 2010, at 6:00 p.m. in the Council Chambers at the Beaufort County Administration Building located at 100 Ribaut Road, Beaufort, SC. Beaufort County will hold a public meeting to solicit public input on community needs and priorities for housing, public facilities and economic development of Beaufort County. At this public hearing Beaufort County will provide information concerning the amount of funds available for proposed community and economic development and the range of activities that may be undertaken, and will present, for public comment, the results of its needs assessment and the activities which might be undertaken to meet identified needs, including the estimated amount proposed to be used for activities that will benefit persons of low-to-moderate income.

This public hearing and the matters to be discussed are subject to the provisions of Beaufort County's Citizens Participation Plan, developed in anticipation of participation in the State of South Carolina's Community Development Block Grant (CDBG) Program, providing for the participation of citizens of Beaufort County in the planning and implementation of community and economic development projects which involve CDBG funds.

The Citizen Participation Plan is available for review at the above address, between the hours of 9:00 a.m. and 5:00 p.m., Monday through Friday. Persons with questions or comments concerning the public hearing or the Citizen Participation Plan may contact Michelle Knight, Lowcountry Council of Governments, PO Box 98, Yemassee, SC 29945, (843) 726-5536.

Beaufort County does not discriminate on the basis of disability status in the admission or access to, or treatment or employment in its federally assisted programs or activities. Morris Campbell, Beaufort County, 100 Ribaut Road, Beaufort, SC 29901, (843) 470-2600, has been designated to coordinate compliance with the nondiscrimination requirements contained in the US Department of Housing and Urban Development's regulations implementing Section 504 (24 CFR Part 8, dated June 2, 1988).

***NOTE: Assistance will be provided to accommodate the special needs of disabled persons upon request.***

## Committee Reports

February 22, 2010

### A. REPORTING COMMITTEES

#### 1. Community Services

① Minutes provided March 15 from the February 15 meeting. (See main agenda item 10)

② Disabilities and Special Needs Board

<i>Nominated</i>	<i>Name</i>	<i>Position / Area / Expertise</i>	<i>Reappoint / Appoint</i>	<i>Votes Required</i>
01.25.10	Grace Dennis	At Large	Reappoint	10 of 11
01.25.10	Beverly Dore	At Large	Reappoint	10 of 11

③ Library Board

<i>Nominated</i>	<i>Name</i>	<i>Position / Area / Expertise</i>	<i>Reappoint / Appoint</i>	<i>Votes Required</i>
01.25.10	Theresa Dunn	Council District 1	Reappoint	10 of 11
02.08.10	Katrina Johnson	Council District 4	Reappoint	8 of 11
02.08.10	Janet Kuchler	Council District 6	Reappoint	10 of 11

④ Hospital Board

<i>Nominated</i>	<i>Name</i>	<i>Position / Area / Expertise</i>	<i>Reappoint / Appoint</i>	<i>Votes Required</i>
01.25.10	Gerald Schulze	At Large	Reappoint	10 of 11

#### 2. Finance

① Minutes provided March 15 from the February 15 meeting.

② Tax Equalization Board

<i>Nominated</i>	<i>Name</i>	<i>Position / Area / Expertise</i>	<i>Reappoint / Appoint</i>	<i>Votes Required</i>
01.25.10	Sheila Chesney	Sheldon Township	Reappoint	10 of 11

#### 3. Natural Resources

① Construction Adjustments and Appeals Board

<i>Nominated</i>	<i>Name</i>	<i>Position / Area / Expertise</i>	<i>Reappoint / Appoint</i>	<i>Votes Required</i>
02.08.10	Herbert Brown	Design Professional	Reappoint	8 of 11

② Historic Preservation Review Board

<i>Nominated</i>	<i>Name</i>	<i>Position / Area / Expertise</i>	<i>Reappoint / Appoint</i>	<i>Votes Required</i>
02.08.10	Caroline Donaghy	Port Royal Island	Appoint	6 of 11

③ Northern Corridor Review Board

<i>Nominated</i>	<i>Name</i>	<i>Position / Area / Expertise</i>	<i>Reappoint / Appoint</i>	<i>Votes Required</i>
02.08.10	Kevin Farruggio	Landscape Architect	Reappoint	8 of 11

④ Planning Commission

<i>Nominated</i>	<i>Name</i>	<i>Position / Area / Expertise</i>	<i>Reappoint / Appoint</i>	<i>Votes Required</i>
02.08.10	Mary Rivers LeGree	Comp. Plan Planning Area	Reappoint	8 of 11

⑤ Southern Corridor Review Board

<i>Nominated</i>	<i>Name</i>	<i>Position / Area / Expertise</i>	<i>Reappoint / Appoint</i>	<i>Votes Required</i>
02.08.10	Ed Pinckney	Resident of Area Served	Reappoint	8 of 11
02.08.10	James Tiller	Landscape Architect	Reappoint	10 of 11

⑥ Stormwater Management Utility Board

<i>Nominated</i>	<i>Name</i>	<i>Position / Area / Expertise</i>	<i>Reappoint / Appoint</i>	<i>Votes Required</i>
02.08.10	Donald Smith	Stormwater District #5	Reappoint	10 of 11
02.08.10	Allyn Schneider	Stormwater District #9	Reappoint	8 of 11

⑦ Zoning Board of Appeals

<i>Nominated</i>	<i>Name</i>	<i>Position / Area / Expertise</i>	<i>Reappoint / Appoint</i>	<i>Votes Required</i>
02.08.10	Edgar Williams	North of Whale Branch River	Reappoint	8 of 11

4. Public Facilities

① Airports Board

<i>Nominated</i>	<i>Name</i>	<i>Position / Area / Expertise</i>	<i>Reappoint / Appoint</i>	<i>Votes Required</i>
02.08.10	Pete Buchanan	Qualifications	Reappoint	10 of 11
02.08.10	Will Dopp	Proximity to HHI Airport	Reappoint	8 of 11
02.08.10	Paul Jorgensen	Proximity to Bft. Cty. Airport	Reappoint	6 of 11
02.08.10	Leonard Law	Proximity to HHI Airport	Reappoint	8 of 11
02.08.10	Jared Newman	Proximity to Bft. Cty. Airport	Reappoint	8 of 11
02.08.10	Ross "Max" Sanders	Active pilot/aircraft owner LI Airport	Reappoint	8 of 11

5. Public Safety

① Bluffton Fire District

<i>Nominated</i>	<i>Name</i>	<i>Position / Area / Expertise</i>	<i>Reappoint / Appoint</i>	<i>Votes Required</i>
02.08.10	Rainie Steedley	At Large	Reappoint	10 of 11

③ Daufuskie Island Fire District

<i>Nominated</i>	<i>Name</i>	<i>Position / Area / Expertise</i>	<i>Reappoint / Appoint</i>	<i>Votes Required</i>
02.08.10	Jon Michael Bryant	At Large	Reappoint	8 of 11
02.08.10	George Jenkins	At Large	Reappoint	10 of 11

④ Lowcountry Regional Transportation Authority

<i>Nominated</i>	<i>Name</i>	<i>Position / Area / Expertise</i>	<i>Reappoint / Appoint</i>	<i>Votes Required</i>
02.08.10	Craig Forrest	At Large	Reappoint	8 of 11
02.08.10	Dick Stewart	At Large	Appoint	6 of 11



## **B. COMMITTEE MEETINGS**

### **1. Community Services**

*William McBride, Chairman*

*Gerald Dawson, Vice Chairman*

➔ Next Meeting – Monday, March 15 at 4:00 p.m., Building 2, Beaufort Industrial Village

### **2. Finance**

*Stu Rodman, Chairman*

*William McBride, Vice Chairman*

➔ Next Meeting – Monday, March 15 at 2:00 p.m., Building 2, Beaufort Industrial Village

### **3. Natural Resources**

*Paul Sommerville, Chairman*

*Jerry Stewart, Vice Chairman*

➔ Next Meeting – Monday, March 1 at 2:00 p.m.

### **4. Public Facilities**

*Herbert Glaze, Chairman*

*Steven Baer, Vice Chairman*

➔ Next Meeting – Tuesday, February 23 at 4:30 p.m.

### **5. Public Safety**

*Jerry Stewart, Chairman*

*Brian Flewelling, Vice Chairman*

➔ Next Meeting – Monday, March 1 at 4:00 p.m.

### **6. Transportation Advisory Group**

*Weston Newton, Chairman*

*Stu Rodman, Vice Chairman*